



We invented the popcorn machine
THEN JUST KEPT GOING!

176 MITTEL DRIVE, WOOD DALE, IL 60191

BOX PUMP MANUAL

Models 7906

120Volt,
Single Phase, 60 Hz

230 Volt,
Single Phase, 50 Hz



READ and UNDERSTAND these operating and safety instructions before operating this machine

SAFETY FIRST



The information in this manual is essential for the safe installation and maintenance of your Cretors oil pumps. The manual must be read and understood before installing, operating or maintaining this equipment or equivalent training must be provided.



"The employer shall instruct each employee in the recognition and avoidance of unsafe conditions and the regulations applicable to his work environment to control or eliminate any hazards or other exposure to illness or injury".
Ref.: 29 CFR 1926.20 (b)(4)(a)(2)



It is understood that safety rules within individual companies vary. If a conflict exists between the safety procedures contained in this manual and the rules of a using company, the more stringent rule should take precedence.

I INTRODUCTION

This manual contains information regarding your Cretors oil pumps. There is nothing, however, more important than the safety aids and warnings that are found throughout this document. The Safety Alert Symbol is used to identify topics of primary safety concern wherever they appear. Furthermore, a separate section has been included which deals exclusively with operation and accident prevention.

If, after reviewing this manual, anything is unclear or technical problems are encountered, contact the dealer from whom you purchased your machine for assistance; and, if there are any additional questions, feel free to contact our Customer Service Department at 800/228-1885. Always have the serial number of your machine available to assist in obtaining the correct information.

II SAFETY ALERT SYMBOL

The symbol shown below is used to call your attention to instructions concerning your personal safety and the safety of others. Watch this symbol. It points out important safety precautions. It means "ATTENTION! Become Alert! Your personal safety is involved!" Read the message that follows and be alert to the risk of personal injury or death.



III PURPOSE OF MANUAL



This instruction manual is intended to familiarize owners with the operation and safety procedures associated with your Cretors oil pumps.



This manual should be kept available to operating and maintenance personnel.



A person who has not read and understood all operating and safety instructions is not qualified to operate the machine.

IV PRODUCT IDENTIFICATION

CRETORS OIL PUMPS:
MODELS: 12881 BOX PUMP

MODEL	7906 BOX AUTOMATIC OIL PUMP MODEL
Capacity:	
Electrical:	120 Volt, Single Phase, 60 Cycle, 120 Watts, 1 amps
Dimensions:	11"D x 7"W x 5"H
Net Weight:	lbs.

V INSTALLATION AND OPERATION INSTRUCTIONS

A. Location

Choose a location for your Cretors oil pump to maximize the ease of operation and maintenance procedures. Check your local building and fire codes for location restrictions.

B. Connecting oil pump to power source



Make certain that power supply circuit breakers are in the off position. Make certain all switches on the machine are in the off position before plugging in your 7906 model Cretors oil pumps.



Perform work only on de-energized circuits. Failure to do so may lead to electrical shock resulting in personal injury or death.

- C. Plug your machine and oil pump into the correct type of outlet, turn on the circuit breaker and then turn on the machine switches. If the motor groans, the receptacle has been improperly wired. Contact an Electrician.

Make certain all switches are in the off position before plugging in your Cretors popcorn machine and oil pump.

1. Connect the pump to the oil delivery tube by pushing the quick connect socket at the end of the delivery hose, onto the quick disconnect plug mounted on the support cover. When the plug is fully inserted, the spring will snap into place and hold the connector securely.
2. Make certain the oil delivery hose contains no low spots. Oil may solidify in such low spots and clog the hose.

D. Pump Adjustment



Make sure that the popper heat switch is off during pump adjustments. This is to avoid touching a hot kettle, which may result in serious burns.

1. To check the output adjustment, place the kettle in the dump position and hold the oil measure cup under the oil delivery tube.



Never hold the oil measure cup under the oil delivery tube if the kettle is hot. This may result in serious burns or injuries.

2. Press the delivery button and wait for the pump to cycle. Dispose of the oil, and cycle the pump again. To obtain accurate readings, let the oil drain back to the pail as it would between popping. Observe the oil in the tube to confirm that the oil has drained back to the pail.

3. After three cycles, the amount of delivered will be consistent. Check this amount with the measuring cup.

MACHINES	AMOUNT OF OIL	SET TIMER TO "X" SECONDS
PT14	4.5 oz.	3 seconds
MR16	5.5 oz.	4 seconds
DI20		
PR20		
G20	7.5 oz.	5 seconds
DI32		
PR32		
G32E		
G32G	11 oz.	9 seconds
DI48		
G48	16 oz.	12 seconds

*Recommended pump timer settings. Machines may differ slightly.

4. If the amount of oil is not correct, it may be adjusted. To adjust the pump:
- Turn off the pump switch
 - Disconnect oil hose



Make sure you brace the pail step against the cabinet to avoid sliding it off the base of the cabinet when pulling the pail across it. Use proper moving techniques to avoid injury to back.

- To set the oil quantity delivery:
 - Remove the snap out plug on top of the switch box, which is on the top of the pump, to expose the timer.
 - Check to make sure the timer has good contact by pushing down lightly on timer, making certain not to push any of the switches.
 - Switches 1 through 10 are each assigned a certain amount of seconds of delay time. Each successive switch is double the amount of delay time for the switch before it. The amounts of delay time are written at the top, along the "OPEN"/"OFF" line (i.e. 1,2,4,8, etc).
 - The switch must be in the UP position along the "OPEN"/"OFF" line for the delay time to apply. An example of this for three seconds would have the switch corresponding to the 1 on the "OPEN"/"OFF" line up along with the switch corresponding to the 2 on the "OPEN"/"OFF" line.
- Install snap out plug (which was removed in first step in section e).
- Connect oil hose by snapping in place.
- Turn on the pump switch and re-check the oil output using steps 1 thru 4 in the Pump Adjustment section.

VI SANITATION INSTRUCTIONS



Be certain the machine is turned 'OFF' and power is unplugged before sanitizing this machine unless a specific cleaning procedure requires power to the machine. Failure to do so could result in injury or death.



Do not clean heated surfaces until they have been given sufficient time to cool. Failure to do so may result in serious burns or scalds.



Do not get the top of the pump wet. Electrical shorts and a shock hazard, which can cause injury may result if the wires inside the top of the pump get wet.

This manual is filled with timesaving and money-saving information regarding your Cretors popcorn machine. There is nothing, however, more important than the safety aids and warnings found throughout this document.

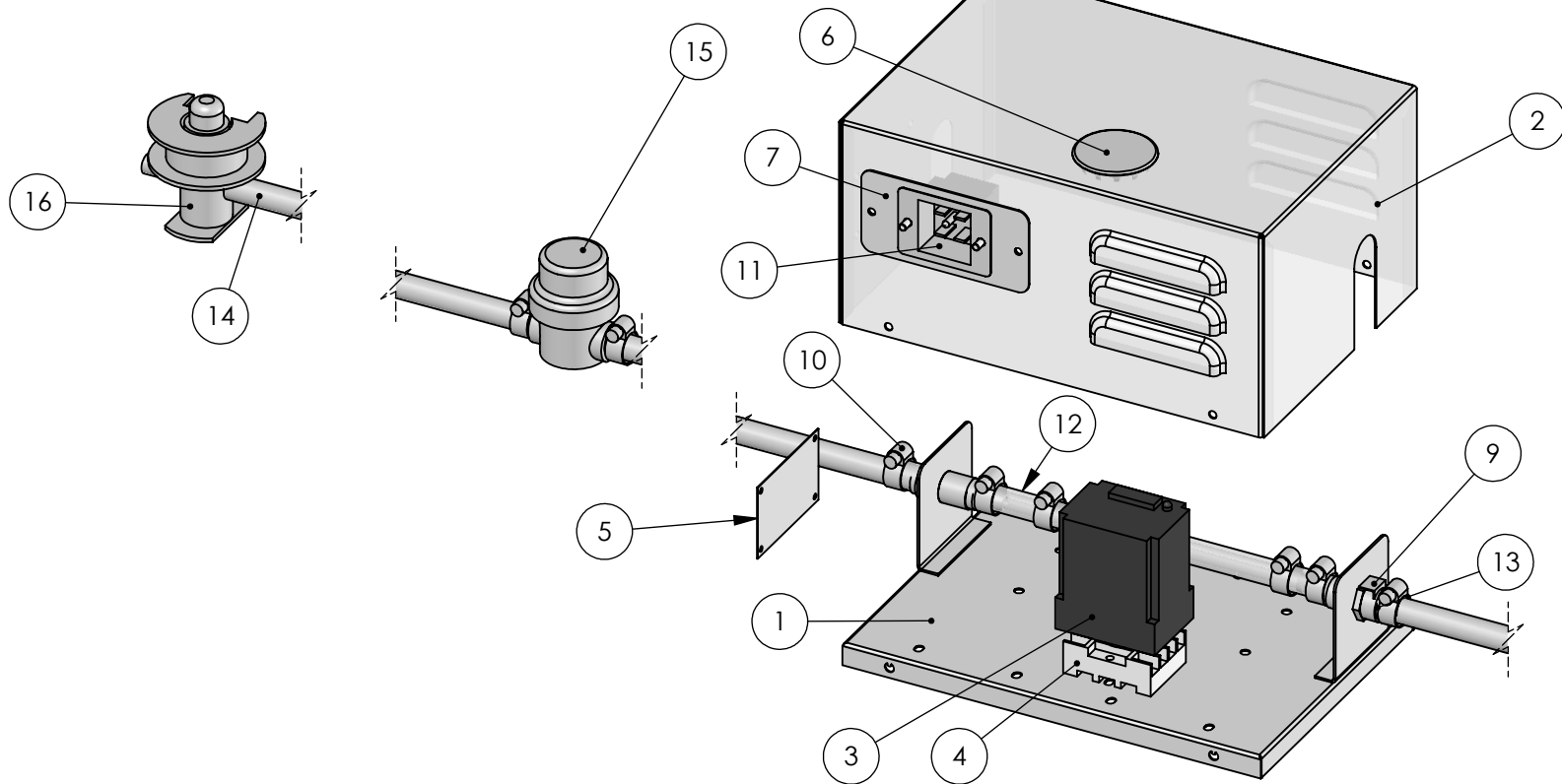
If you have any questions, feel free to contact our Customer Service at 800/228-1885.

Additional copies of this manual can be obtained from Customer Service.

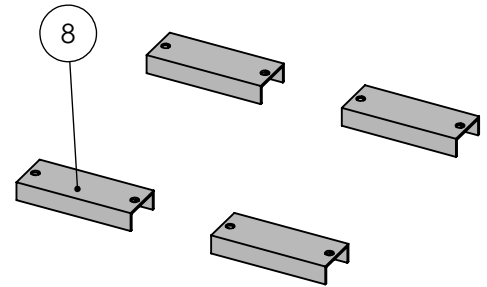
Cretors warrants this machine to be free of defects in parts, materials and workmanship for two years. Please fill out and return the registration card to activate your warranty. If you have questions concerning the warranty, please contact Customer Service at 800/228-1885.



REVISIONS			
REV	DESCRIPTION	DATE	APPROVED
A	DC -	XX/XX/XX	X. XXXXX

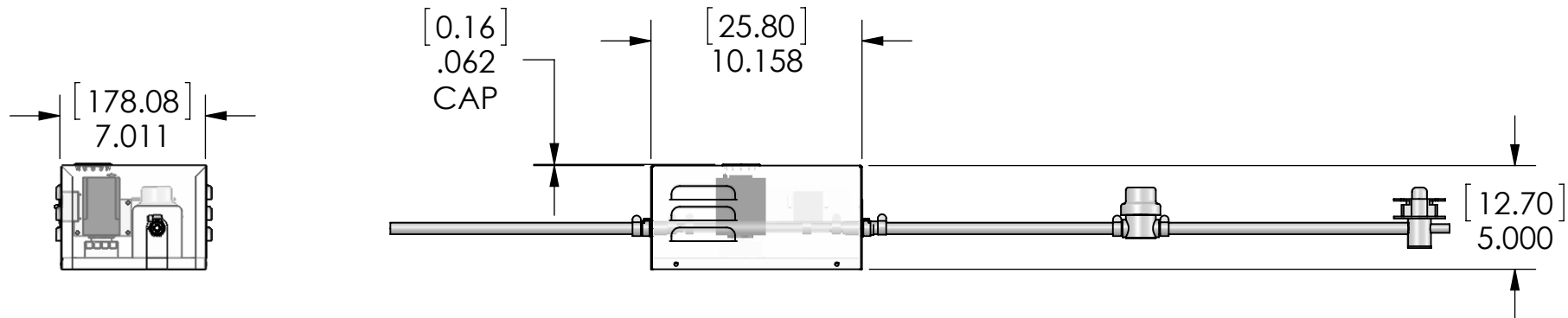


ITEM #	QTY.	P / N	DESCRIPTION
1	1	12881	BOX PUMP PLATE WELDMENT
2	1	12880	PUMP COVER
3	1	2540	TIMER
4	1	3036	RELAY BASE
5	1	1517	NAMEPLATE, SERIAL NO, BLANK
6	1	2573	HOLE COVER WITH 'O' RING
7	1	12175	CONNECTOR PLATE, 7800 PUMP, DOM
8	4	4732	MAGNET
9	2	12892	COUPLINGBODY 3/8" ID QK DISC
10	8	1069	CLAMP HOSE
11	1	2011	RECEPTACLE PUMP
12	1	10863	TUBING 3/8" ID X 9/16" OD SILI
13	2	12891	INSERT- QUICK DISCONNECT FITTING
14	3	1223	TUBING-3/8" ID CLEARFLEX
15	1	14626	FILTER, IN LINE, CLEANABLE
16	1	4673	QCDII BAG CONNECTOR



NOTES:
1. NO SUBSTITUTIONS PRIOR TO ENGINEERING APPROVAL.

UNLESS SPECIFIED ALL DIMENSIONS ARE IN INCHES.	THIRD ANGLE PROJECTION		76 MITTEL DRIVE, WOOD DALE, IL 60191	
			BOX PUMP ASSEMBLY	
TOLERANCES X.XX = ±0.02 X.XXX = ±0.01 ANGLES = ±0.5° HOLES = +0.005/-0 FINISH = 125Rq REMOVE SHARP EDGES & BURRS.	SIGNATURE	DATE	MATERIAL	
	ESP	11/24/15	SEE BOM	
THIS DRAWING CONTAINS INFORMATION PROPRIETARY TO C. CRETORS & CO. AND IS FURNISHED IN CONFIDENCE FOR THE SOLE PURPOSE OF SUPPLYING THE RECIPIENT WITH NEEDED ENGINEERING DATA. IT'S CONTENTS SHOULD NOT BE DISCLOSED OR REPRODUCED IN ANY MANNER WITHOUT THE WRITTEN CONSENT OF C. CRETORS & CO. ALL RIGHTS RESERVED.	APPROVED BY	XX/XX/XX	SIZE	WEIGHT
	X. XXXXX		A	4.75 LBS
			DWG NO	REV
			7906A	A
		SCALE	1:4 SHEET	1 OF 2



NOTES:

1. DIMENSIONS ARE IN INCHES AND [CENTIMETERS].
2. TUBING IS CUT-TO LENGTH AS NEEDED

UNLESS SPECIFIED ALL DIMENSIONS ARE IN INCHES.	THIRD ANGLE PROJECTION 		176 MITTEL DRIVE, WOOD DALE, IL 60191	
	TITLE BOX PUMP ASSEMBLY		SIZE A	DWG NO 7906A
TOLERANCES X.XX = ±0.02 X.XXX = ±0.01 ANGLES = ±0.5° HOLES = +0.005/-0 FINISH = 125Rq REMOVE SHARP EDGES & BURRS.	SIGNATURE DRAWN BY ESP	DATE 11/24/15	MATERIAL SEE BOM	WEIGHT 4.75 LBS
APPROVED BY X. XXXXX			XX/XX/XX	REV A
THIS DRAWING CONTAINS INFORMATION PROPRIETARY TO C. CRETORS & CO. AND IS FURNISHED IN CONFIDENCE FOR THE SOLE PURPOSE OF SUPPLYING THE RECIPIENT WITH NEEDED ENGINEERING DATA. IT'S CONTENTS SHOULD NOT BE DISCLOSED OR REPRODUCED IN ANY MANNER WITHOUT THE WRITTEN CONSENT OF C. CRETORS & CO. ALL RIGHTS RESERVED.			SCALE 1:4	SHEET 2 OF 2