

1005	OILITE BEARING	7615	1/4-20 X 3/4 HEX CAP SCREW
1032	CROSS SHAFT LUG	7619	1/4-20 x 1/2 HEX SCREW
1041	PAN DUMP SPRING ROD	7621	1/4" INTERNAL TOOTH LOCKWASHER
1102	KETTLE SUPPORT BRACKET	7622	3/8" FLAT WASHER
1103	TERMINAL HOUSING COVER	7628	1/4-28 X 3/4" HEX HEAD (cmd50)
1225	FISH PAPER	7635	3/8" MED. SPLIT LOCKWASHER
1268	1/4 x 1/4 SPACER (cmd50)	7638	3/8-16 X 1' HEX BOLT
1278	KETTLE LEVEL ADJUSTING SCREW	7642	8-32 x 3/8 S.S. TRUSS HEAD
1306	HEX PAN REST STUD	7646	1/4-28 HEX NUT
1411	PLUG-30 AMP, 125/250V, T,4-WIRE	7650	1/4-20 X 3/8 HEX HEAD
1413	RECEPTACLE-30A 4-WIRE, NEMA	7656	6-32 X 3/8 BINDING HEAD
1547	BACK PANEL - CARMELIZER	7669	3/8-16 HEX NUT
1557	ROLL PIN	7672	10-32 x 1/4 SET SCREW
1569	3/8-16 x 1-1/2 HEX BOLT	7772	6-32 x1/4 BINDING HEAD
1575	1/4 x 1-3/8 ROLL PIN	7780	5/16" FLAT WASHER
1678-08	MOTOR (DOMESTIC&EXPORT)	7783	1/4-28 X 1-1/2" HEX HEAD (cmd25)
1901	SPRING COLLAR	7788	#6 LOCKWASHER
1902	DUMP SPRING - 13 COIL	7789	#8 STAR LOCKWASHER
1903	DUMP SPRING - 10 COIL	10134	1/2" FLAT WASHER
2122	HEYCO BUSHING	10261	FISHPAPER WASHER DIRECT WIRE
2130	PIPE CLAMP	12121	SWITCHPLATE - DIGITAL
2260	1/2" CONNECTOR	12122	WIRE HARNESS
2855	CORD-25 AMP-Export 230V	12386	10-24 x 1" FLAT HEAD SCREW
3035-C	BUZZER - 240 VOLT	12786-1	DECAL - INSTRUCTIONS
4691	CORD - 25AMP, 5X4.0MM-Export 400V ØN	14583	RELAY - 230V. SINGLE POLE
5130	LIGHTED SWITCH	14585	DIGITAL TEMPERATURE 120V.
5200	INDICATOR LIGHT	14585-E	DIGITAL TEMPERATURE CONTROL 230V.
5532	CROSS SHAFT	16348	1/4 x 3/8 x 7/8 STEEL SPACER (cmd25)
5533	CROSS SHAFT LUG		
5534	SPRING COVER		
5828	5/16-24 x 1/2 HALF DOG PT. SET SC		
5978	TERMINAL COVER PLATE		
5979	TERMINAL HOUSING		
5981	BAKELITE WASHER		
5992	INSULATOR TUBE		
7604	CROSS SHAFT		

DIGITAL CARAMALIZER - KETTLE PARTS

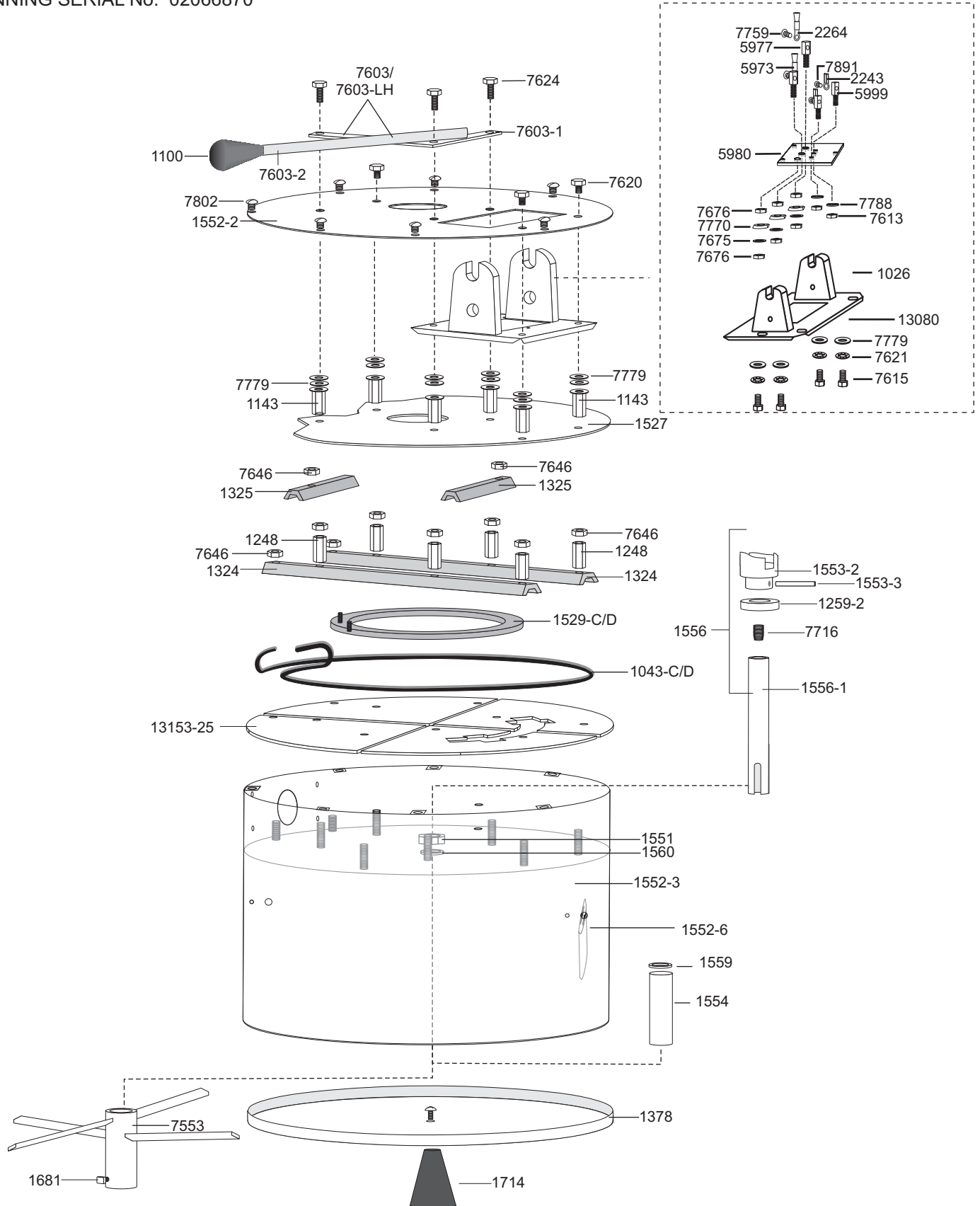
UPSIDE DOWN

BEGINNING SERIAL No. 02066870

DOC: CMD20011

CMD-2.1-A

9/2007



C. CRETORS AND COMPANY

176 MITTEL DRIVE

WOOD DALE, IL 60191

PHONE: (773)588-1690, (800)228-1885, FAX: (847) 616-6970

WEB SITE: <http://www.cretors.com> Email: postmaster@cretors.com

DIGITAL CARAMALIZER - KETTLE PARTS

DOC: CMD20011

CMD-2.1-A

UPSIDE DOWN

9/2007

BEGINNING SERIAL No. 02066870

1026	PAN LUG	7603-2	DUMP HANDLE BAR ONLY
1043-C	ELEMENT 2000 WATT 240 V	7603-LH	DUMP HANDLE LEFT HAND
1043-D	ELEMENT 2000 WATT 208 V	7676	10-32 MONEL NUT
1100	KNOB	7770	#10 CUP WASHER
1143	SPACER - HEX W/WASHER	7779	1/4" FLAT WASHER
1248	SPACER	7789	#8 INTERNAL TOOTHLOCK WASHER
1259-2	SHAFT COLLAR W/ SET SCREW	7802	10-24 x 1/4 BINDING HEAD
1268	1/4" SPACER	7891	8-32x3/16 SS PAN HEAD SCREW
1324	ELEMENT CLAMP	12357	THERMOCOUPLE ASSY-CMD25
1325	ELEMENT CLAMP (3-1/4")	13080	PAN LEG PLATE CMD25
1378	MIXER PAN COVER	13153-25	DIFFUSER PLATE CMD25
1527	BAFFLE PLATE	13246	HEAT DIST. PLATE
1529-C	ELEMENT 500 WATT, 240 VOLT		
1529-D	ELEMENT 500 WATT, 208 VOLT		
1529-D	500 WATT, 208 VOLT ELEMENT		
1551	CENTER STUD NUT		
1552-3	CARMELIZER KETTLE-CMD25		
1552-2	PAN BOTTOM COVER		
1552-6	DEFLECTOR-CMD25		
1553-2	CLUTCH DOG ONLY		
1553-3	CLUTCH DOG PIN		
1554	CENTER STUD		
1556	S.S. CLUTCH DOG & SHAFT		
1556-1	S.S. CLUTCH DOG SHAFT ONLY		
1558	PAN MIXER LUG		
1559	CENTER STUD WASHER		
1560	LOCK WASHER		
1681	MIXER BLADE ASSY - DRIVE BOLT		
1714	KNOB		
5977	WIRE TERMINAL STUD		
5980	MYROY PLATE		
5999	THERMOCOUPLE STUD		
7553	SS MIXER BLADE ASSY		
7589D-C	KETTLE ASSY 240V COMPLETE-DIG		
7589D-D	KETTLE ASSY 208V COMPLETE-DIG		
7603	DUMP HANDLE ASSY		
7603-1	DUMP HANDLE BRACKET ONLY		

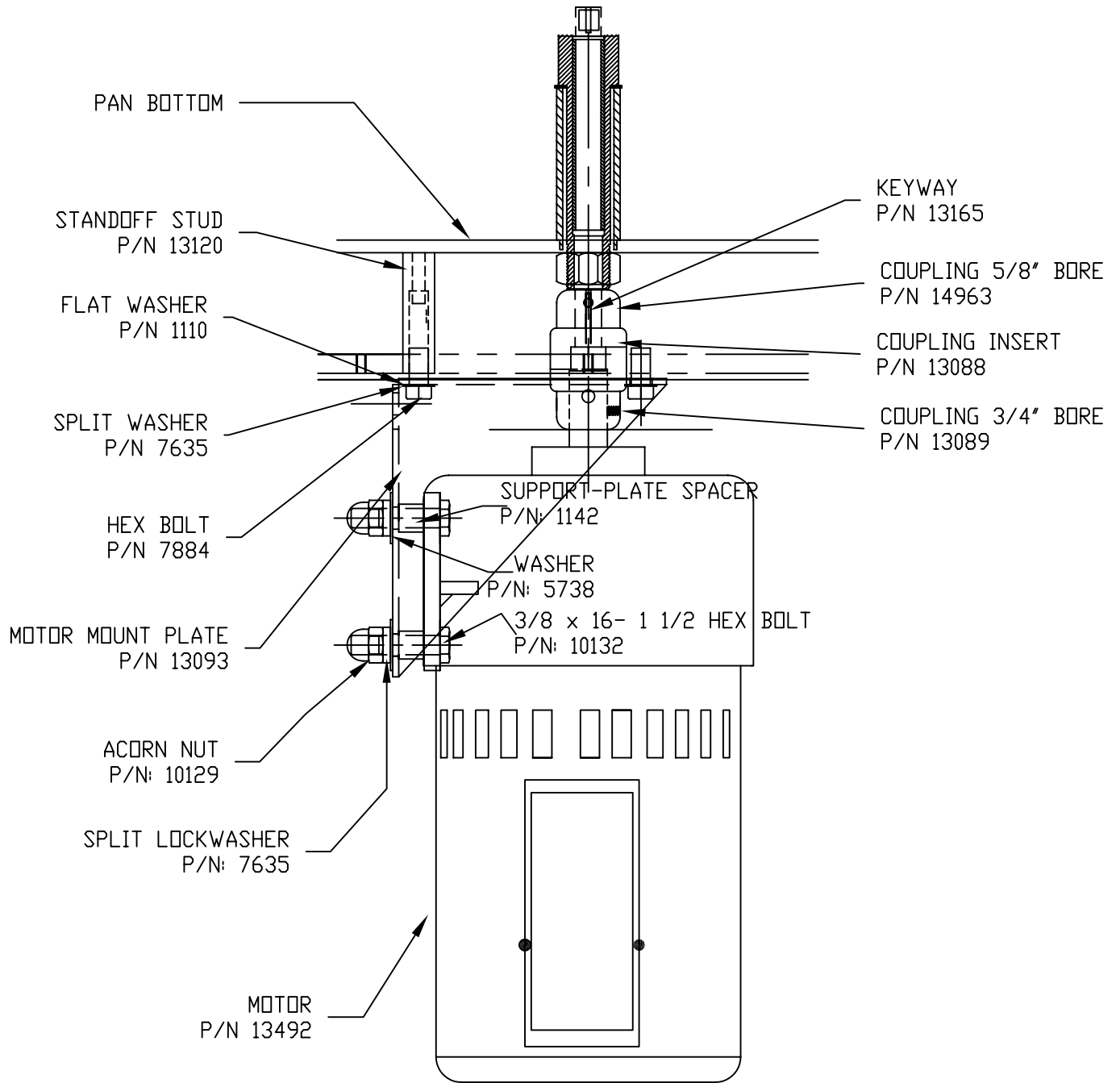
C. CRETORS AND COMPANY

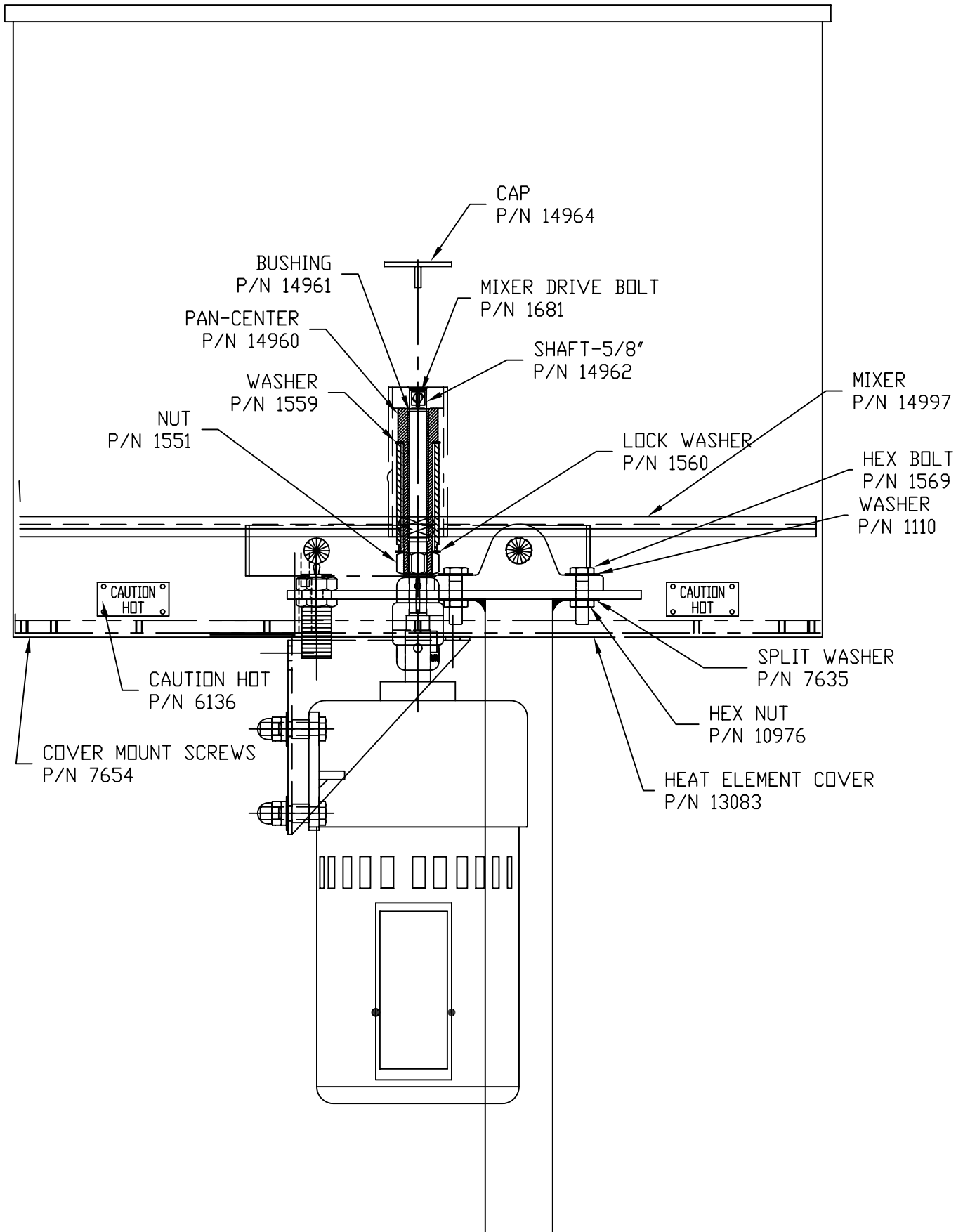
176 MITTEL DRIVE

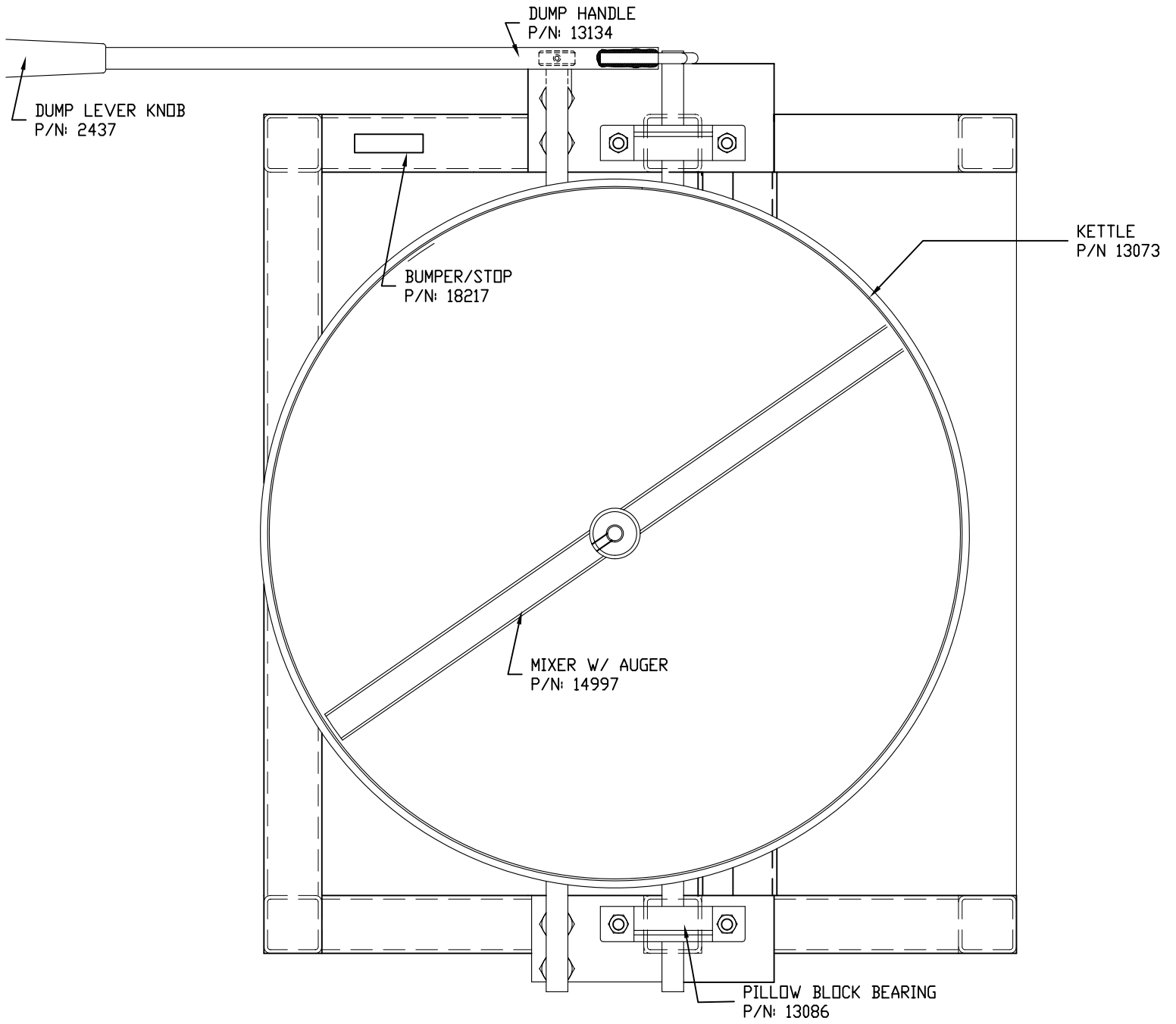
WOOD DALE, IL 60191

PHONE: (773)588-1690, (800)228-1885, FAX: (847) 616-6970

WEB SITE: <http://www.cretors.com> Email: postmaster@cretors.com







DIGITAL CARAMALIZER 50 - KETTLE PARTS

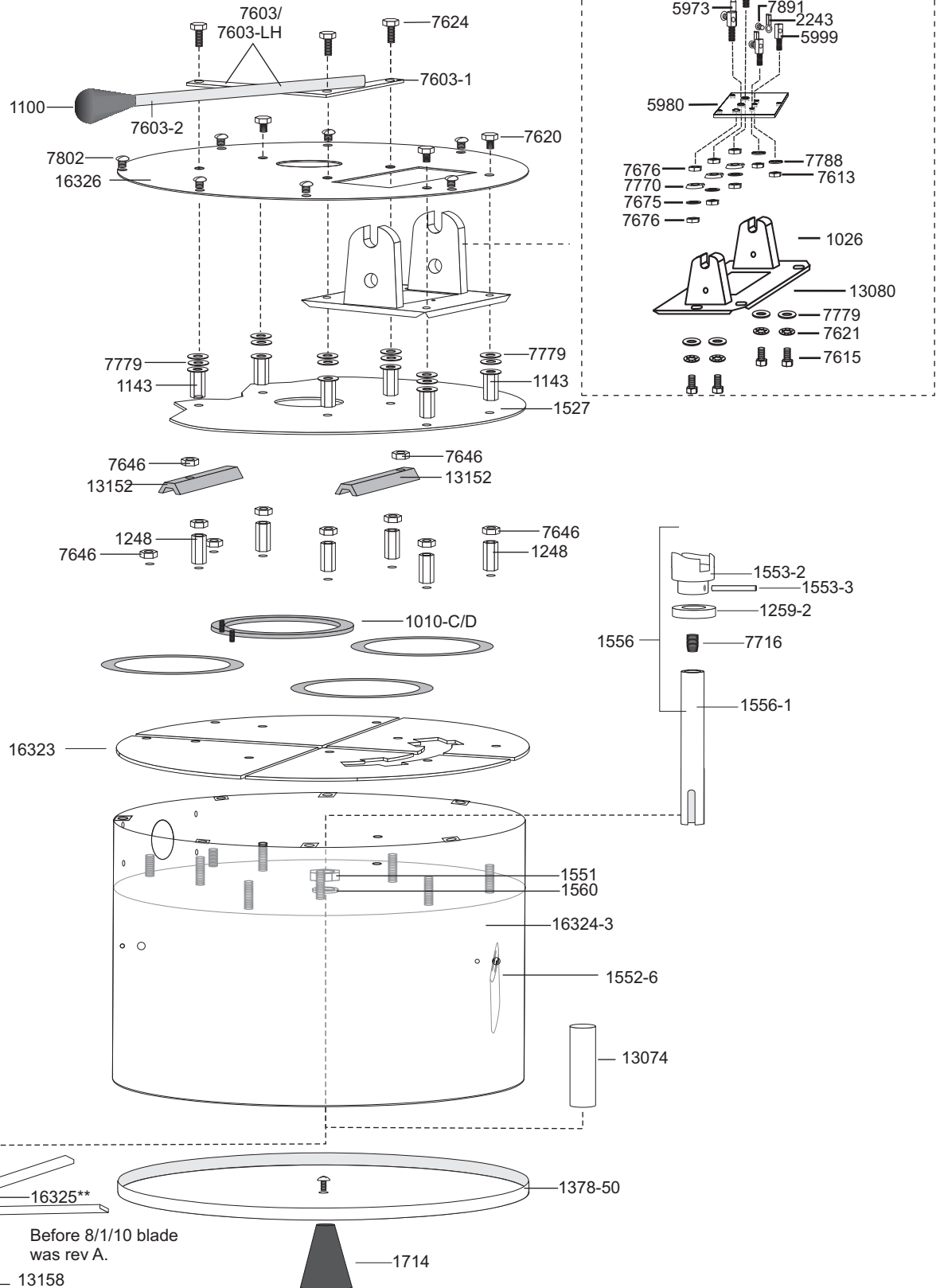
UPSIDE DOWN

BEGINNING SERIAL No. 10080000

DOC: CMD20016

CMD50-2.1-C

8/2010



C. CRETORS AND COMPANY

176 MITTEL DRIVE

WOOD DALE, IL 60191

PHONE: (773)588-1690, (800)228-1885, FAX: (847) 616-6970

WEB SITE: <http://www.cretors.com> Email: postmaster@cretors.com

DIGITAL CARAMALIZER 50 - KETTLE PARTS

DOC: CMD20016

CMD50-2.1-C

UPSIDE DOWN

8/2010

BEGINNING SERIAL No. 10080000

1026	PAN LUG	13074	PAN CENTER STUD- 1/2" SHAFT
1100	KNOB	13080	PAN LEG PLATE CMD25/50
1143	SPACER - HEX W/WASHER	13158	STIRRER CAP-1/2" SHAFT- CMD
1248	SPACER	16323	DIFFUSER PLATE CMD50
1259-2	SHAFT COLLAR W/ SET SCREW	16324-3	CARMELIZER KETTLE-CMD50
1268	1/4" SPACER	16325	SS MIXER BLADE ASSY(REV B)
1769	ELEMENT CLAMP (SMALL)	16326	PAN BOTTOM COVER
13152	ELEMENT CLAMP (LARGE)		
1378-50	MIXER PAN COVER		
1527	BAFFLE PLATE		
1010-C	ELEMENT 750 WATT, 240 VOLT		
1010-D	ELEMENT 750 WATT, 208 VOLT		
1551	CENTER STUD NUT		
1552-5	PAN MIXER		
1552-6	DEFLECTOR-CMD25		
1553-2	CLUTCH DOG ONLY		
1553-3	CLUTCH DOG PIN		
1556	S.S. CLUTCH DOG & SHAFT		
1556-1	S.S. CLUTCH DOG SHAFT ONLY		
1560	LOCK WASHER		
1681	MIXER BLADE DRIVE BOLT-MACH		
1681-1	MIXER BLADE DRIVE BOLT		
1714	KNOB		
5977	WIRE TERMINAL STUD		
5980	MYROY PLATE		
5999	THERMOCOUPLE STUD		
7590-C	KETTLE ASSY 240V COMPLETE-DIG		
7590-D	KETTLE ASSY 208V COMPLETE-DIG		
7603	DUMP HANDLE ASSY		
7603-LH	DUMP HANDLE LEFT HAND		
7676	10-32 MONEL NUT		
7770	#10 CUP WASHER		
7779	1/4" FLAT WASHER		
7789	#8 INTERNAL TOOTHLOCK WASHER		
7802	10-24 x 1/4 BINDING HEAD		
7891	8-32x3/16 SS PAN HEAD SCREW		
12357	THERMOCOUPLE ASSY-CMD25/50		

C. CRETORS AND COMPANY

176 MITTEL DRIVE

WOOD DALE, IL 60191

PHONE: (773)588-1690, (800)228-1885, FAX: (847) 616-6970

WEB SITE: <http://www.cretors.com> Email: postmaster@cretors.com