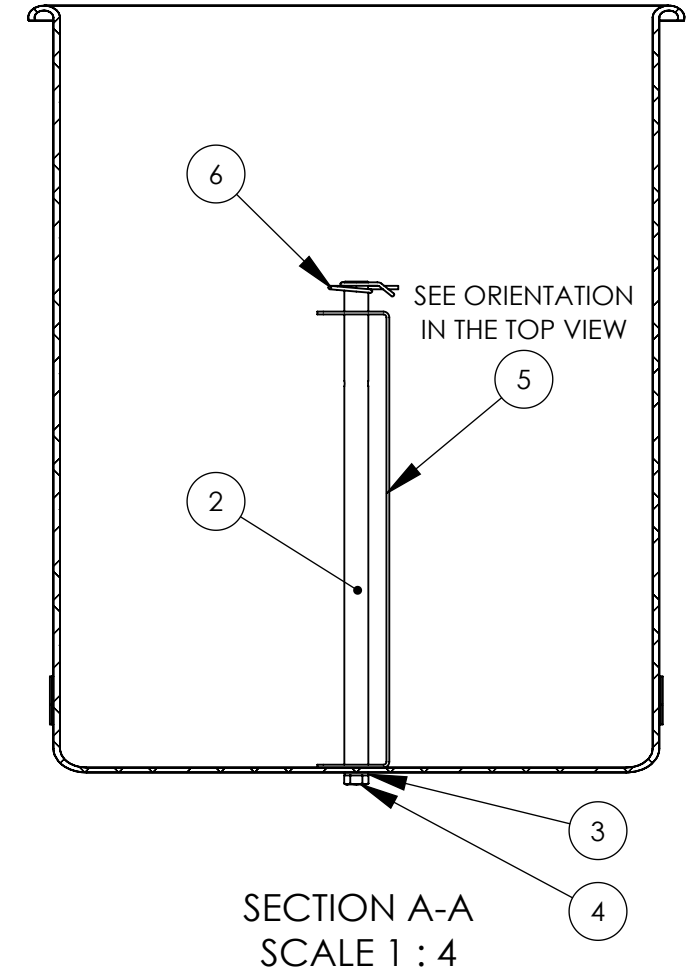
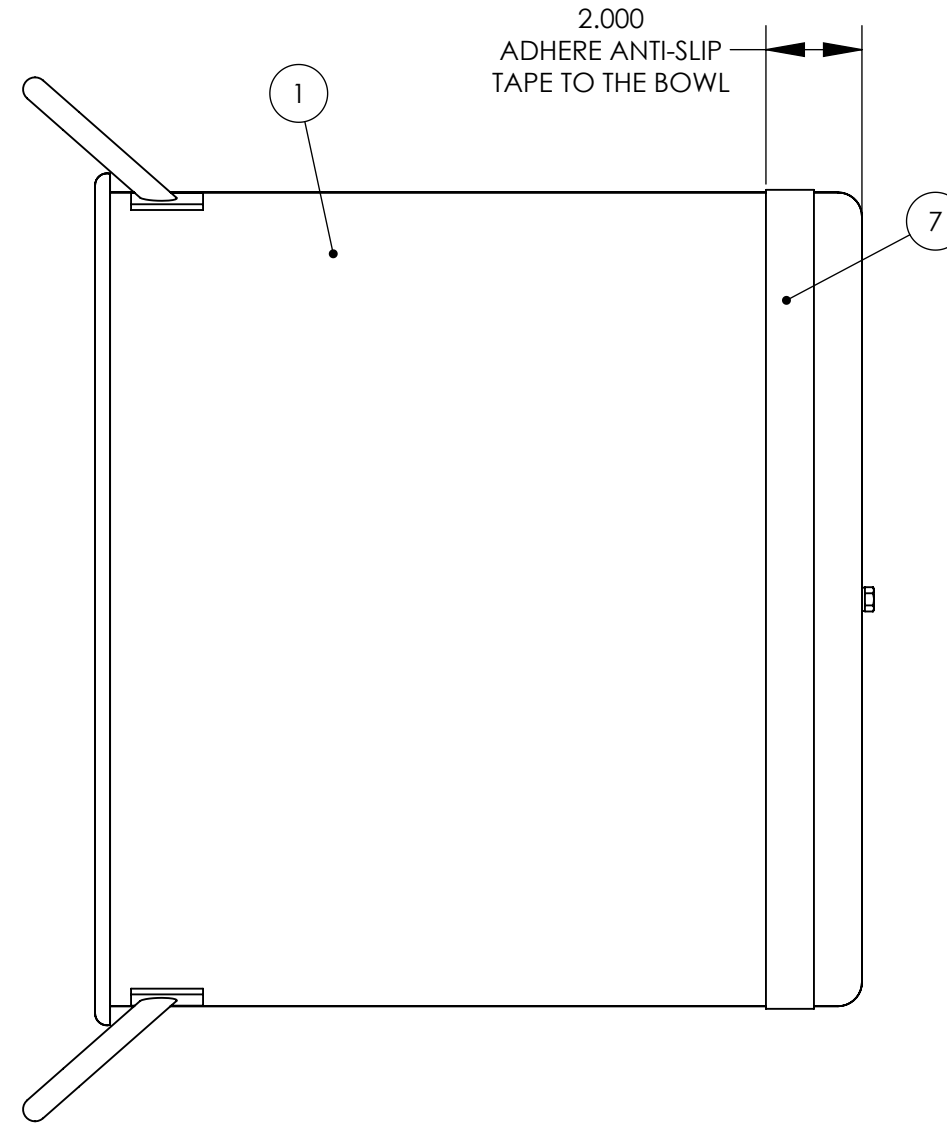
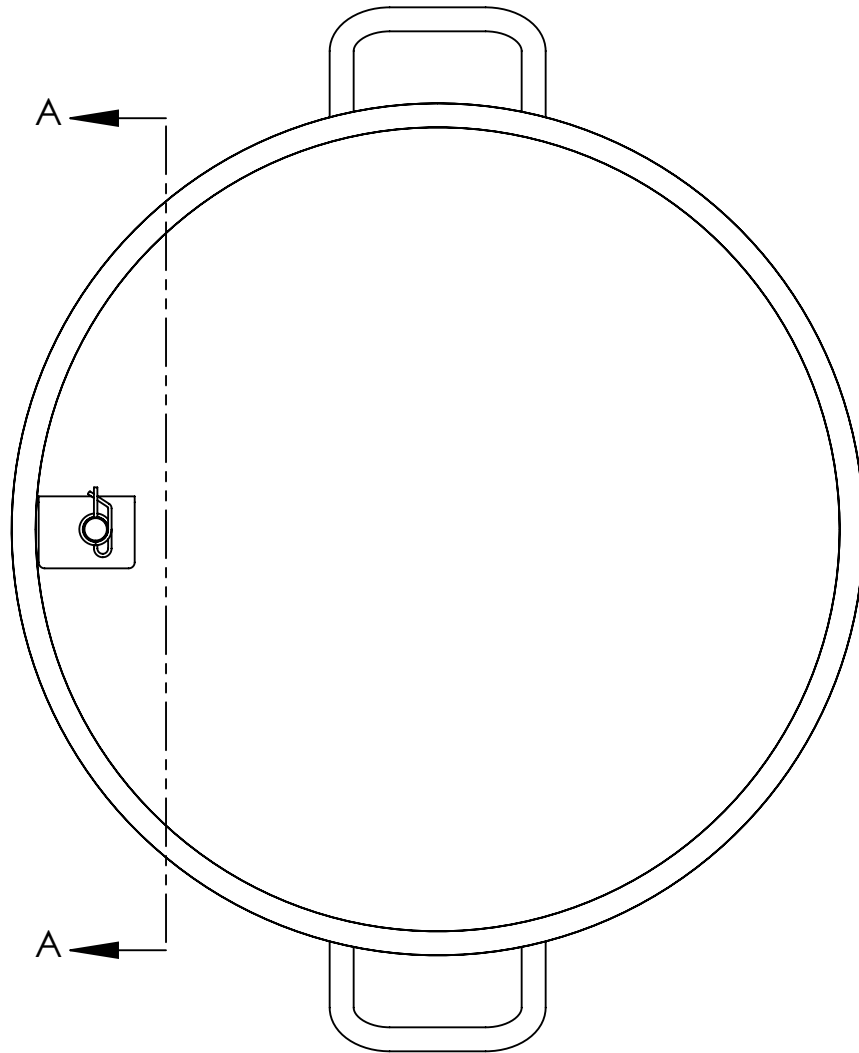


BILL OF MATERIALS			
ITEM #	QTY.	P/N	DESCRIPTION
1	1	14253-2	BOWL, 60 QUART, DRILLED
2	1	12816	REAR WHEEL SUPPORT / MIXER SHAFT
3	1	5743	1/4", MEDIUM SPLIT LOCKWASHER, 18-8 S.S.
4	1	10121	1/4-20 X 1/2" LG FULLY THD, HEX HEAD CAP SCREW, 18-8 S.S.
5	1	12835	MIXING BLADE, MIXER/COATER
6	1	12818	CLIP, RETAINING, RUE-24
7	1	21610	TAPE, ANTI-SLIP, 60 QUART BOWL

REVISIONS			
REV	DC #	APPROVED BY	APPROVED ON
-	-	-	-
-	-	-	-
A	-	nvidojevic	08/20/2018



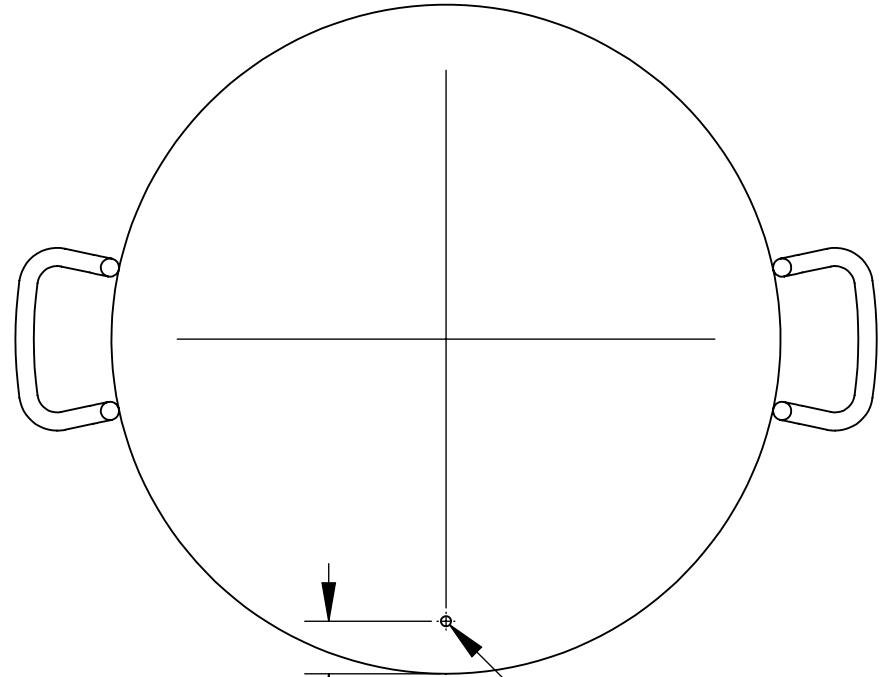
NOTES:
1. XXX.

- STANDARD NOTES:**
1. REMOVE SHARP EDGES AND BURRS.
 2. UNLESS SPECIFIED ALL DIMENSIONS ARE IN INCHES.
 3. REFERENCE DIMENSIONS ARE INDICATED IN PARENTHESIS.
 4. CRITICAL DIMENSIONS THAT NEED INSPECTION ARE INDICATED IN OBOUND BOX.
 5. T.S.C. STANDS FOR THEORITICAL SHARP CORNER & INS STANDS FOR INSIDE.
 6. FOR SHEET METAL, UNLESS SPECIFIED ALL DIMENSIONS ARE OUTSIDE.
 7. FOR SHEET METAL, FLAT PATTERNS ARE FOR REFERENCE ONLY.
 8. MINOR SCRATCHES ARE ALLOWED ON OPPOSITE SIDE OF MILL FINISH & #4 FINISH.

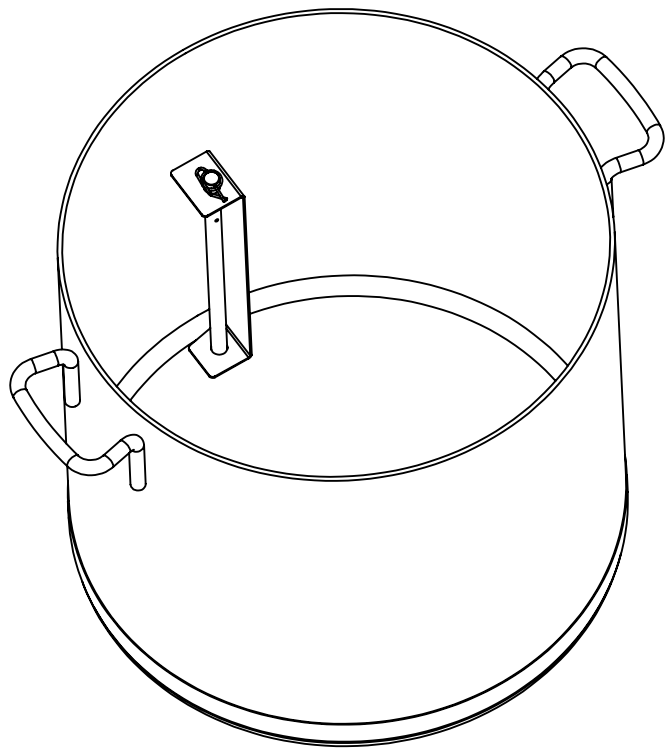
THIRD ANGLE PROJECTION		176 MITTEL DRIVE, WOOD DALE, IL 60191 www.cretors.com www.flo-thru.com	
TOLERANCES x.xx = ± 0.02 x.xxx = ± 0.01 ANGLES = ± 1° HOLES = +0.005 / -0 FINISH = 125Ra		DESCRIPTION BOWL, WITH MIXER, 60 QUART	
B SIZE DRAWING		MATERIAL REFER INDIVIDUAL SUB-PARTS	
DRAWN BY ndarji	DRAWN DATE 08/20/2018	APPROX. WEIGHT 22.9 LBS	
APPROVED BY nvidojevic	APPROVED DATE 08/20/2018	DRAWING NUMBER 14253	
THIS DRAWING CONTAINS INFORMATION PROPRIETARY TO C. CRETORS & CO. AND IS FURNISHED IN CONFIDENCE FOR SOLE PURPOSE OF SUPPLYING THE RECIPIENT WITH NEEDED ENGINEERING DATA. THE CONTENTS SHOULD NOT BE DISCLOSED OR REPRODUCED IN ANY MANNER WITHOUT WRITTEN CONSENT OF C. CRETORS & CO. ALL RIGHTS RESERVED.			REVISION A
			SHEET 1 OF 1

BILL OF MATERIALS			
ITEM #	QTY.	P/N	DESCRIPTION
1	1	16811-1	BOWL, 60 QUARTS, PURCHASED
2	1	12816	REAR WHEEL SUPPORT / MIXER SHAFT
3	1	5743	1/4", MEDIUM SPLIT LOCKWASHER, 18-8 S.S.
4	1	12628	1/4-20 X 5/8" LG FULLY THD, HEX HEAD CAP SCREW, 18-8 S.S.
5	1	12835	MIXING BLADE, MIXER/COATER
6	1	12818	CLIP, RETAINING, RUE-24
7	1	21610	TAPE, ANTI-SLIP, 60 QUART BOWL

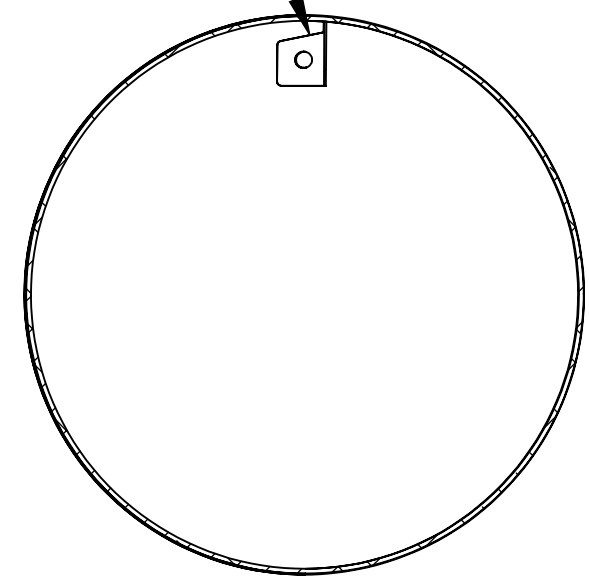
REVISIONS			
REV	DC #	APPROVED BY	APPROVED ON
-	-	-	-
-	-	-	-
A	-	nvidojevic	03/06/2020



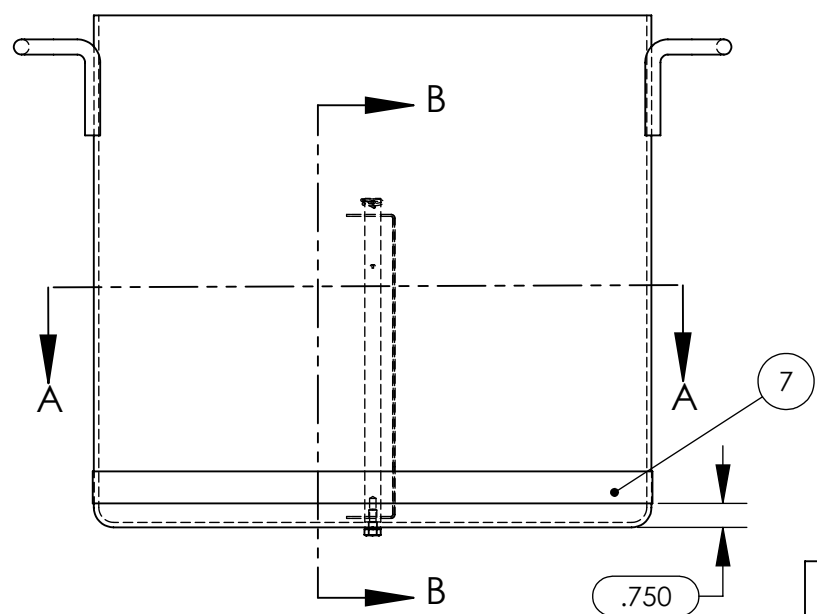
1.370
 DRILL HOLE PRIOR TO ASSEMBLY
 Ø .266 THRU



ENSURE THAT THE MIXING BLADE CHAMFER AT THE BASE IS TOWARDS THE BOWL INSIDE DIAMETER

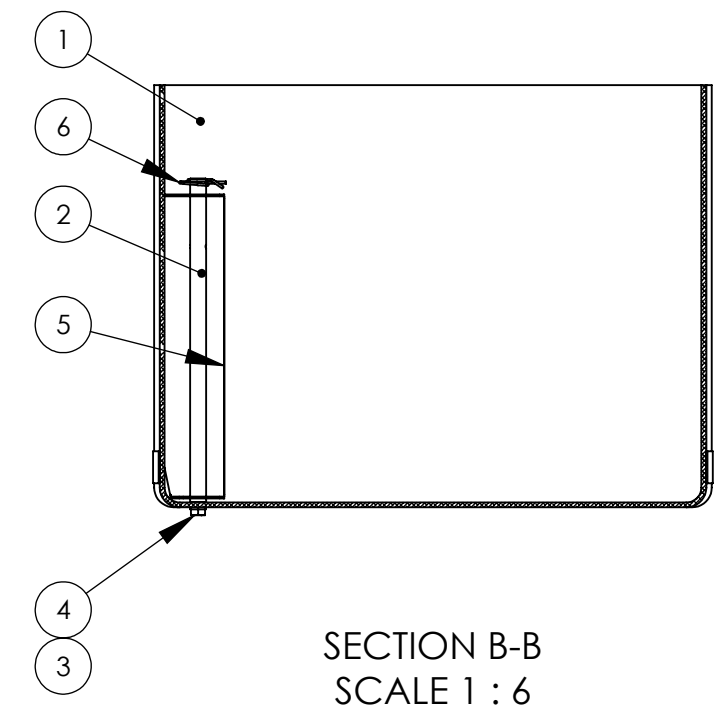


SECTION A-A
 SCALE 1 : 6



NOTES:
 1. XXX.

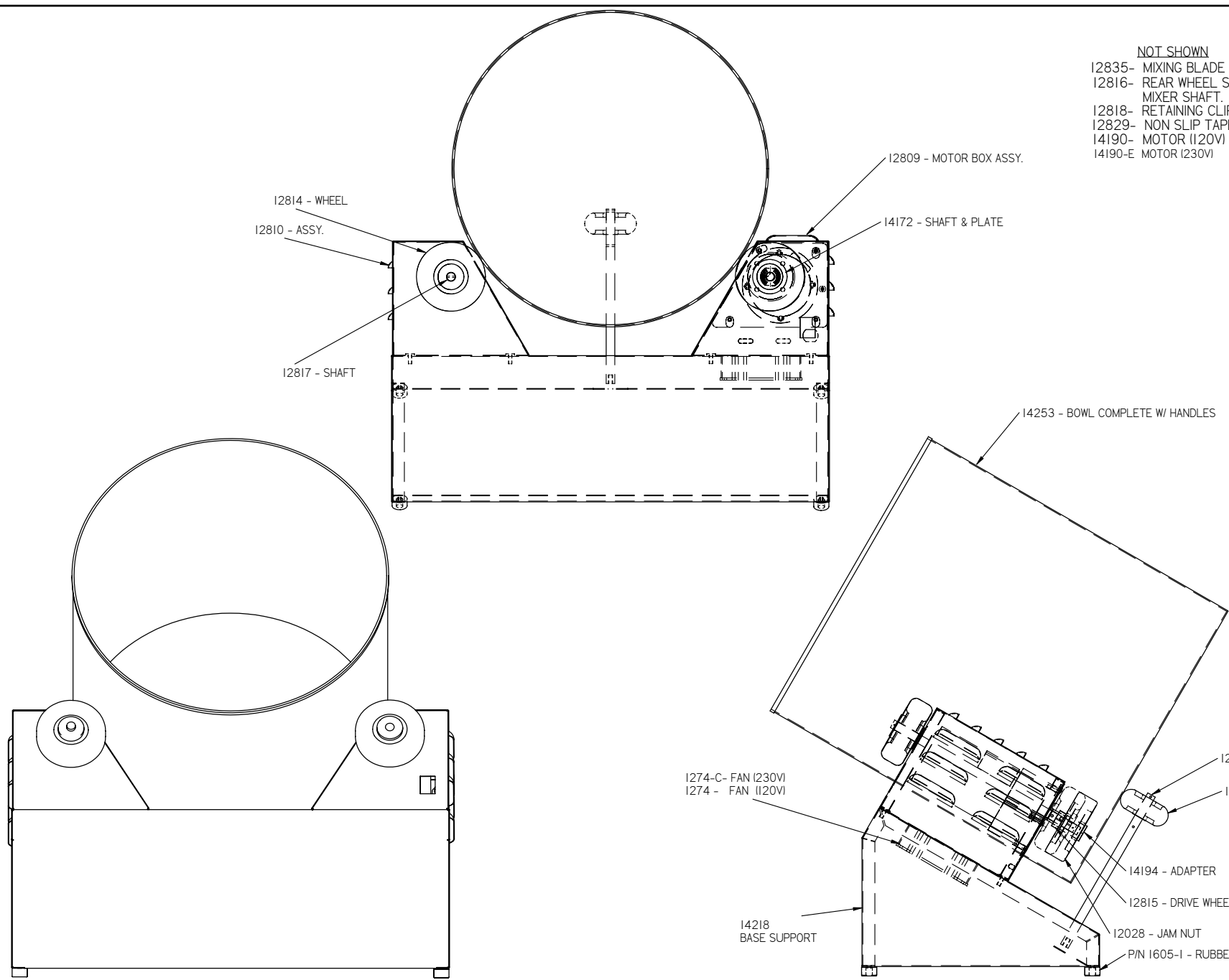
- STANDARD NOTES:**
1. REMOVE SHARP EDGES AND BURRS.
 2. UNLESS SPECIFIED ALL DIMENSIONS ARE IN INCHES.
 3. REFERENCE DIMENSIONS ARE INDICATED IN PARENTHESIS.
 4. CRITICAL DIMENSIONS THAT NEED INSPECTION ARE INDICATED IN OBOUND BOX.
 5. T.S.C. STANDS FOR THEORITICAL SHARP CORNER & INS STANDS FOR INSIDE.
 6. MINOR SCRATCHES ARE ALLOWED ON OPPOSITE SIDE OF MILL FINISH & #4 FINISH.
 7. FOR SHEET METAL, UNLESS SPECIFIED ALL DIMENSIONS ARE OUTSIDE.
 8. FOR SHEET METAL, FLAT PATTERNS ARE FOR REFERENCE ONLY.
 9. FOR SHEET METAL, SEMI-PERF TOOLING TO BE INSTALLED BASED ON MATERIAL THICKNESS. SEMI-PERF BUTTON FALL OFF IS NOT ACCEPTABLE.



SECTION B-B
 SCALE 1 : 6

THIRD ANGLE PROJECTION		176 MITTEL DRIVE, WOOD DALE, IL 60191 www.cretors.com www.flo-thru.com	
TOLERANCES x.xx = ± 0.02 x.xxx = ± 0.01 ANGLES = ± 1° HOLES = +0.005 / -0 FINISH = 125Ra		DESCRIPTION BOWL ASSY, 1 MIXING BLADE, 60 QT RETAIL	
B SIZE DRAWING		MATERIAL REFER INDIVIDUAL SUB-PARTS	
DRAWN BY ndarji	DRAWN DATE 03/06/2020	APPROX. WEIGHT 17.3 LBS	
APPROVED BY nvidojevic	APPROVED DATE 03/06/2020	DRAWING NUMBER 16811	
THIS DRAWING CONTAINS INFORMATION PROPRIETARY TO C. CRETORS & CO. AND IS FURNISHED IN CONFIDENCE FOR SOLE PURPOSE OF SUPPLYING THE RECIPIENT WITH NEEDED ENGINEERING DATA. THE CONTENTS SHOULD NOT BE DISCLOSED OR REPRODUCED IN ANY MANNER WITHOUT WRITTEN CONSENT OF C. CRETORS & CO. ALL RIGHTS RESERVED.			REVISION A
			SHEET 1 OF 1

NOT SHOWN
 12835- MIXING BLADE
 12816- REAR WHEEL SUPP.
 MIXER SHAFT.
 12818- RETAINING CLIP
 12829- NON SLIP TAPE
 14190- MOTOR (120V)
 14190-E MOTOR (230V)



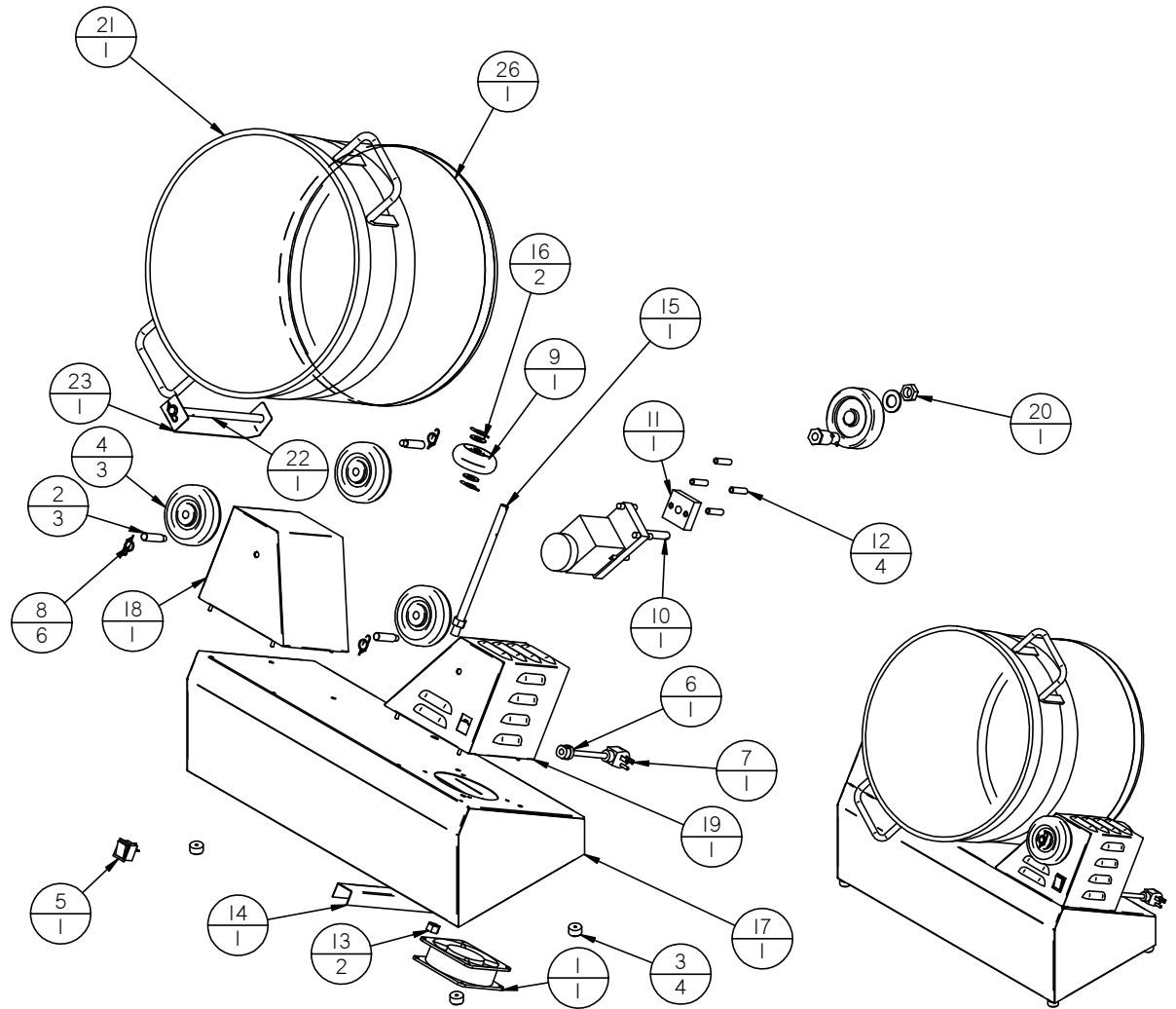
REV.	DESCRIPTION OF REVISION	BY	DATE

C. CRETORS & COMPANY
 3243 N. CALIFORNIA AVE., CHICAGO, IL 60618-5890
 TEL: 773/588-1690 FAX: 773/588-2171

This drawing contains information proprietary to C. Cretors & Co. and is furnished in confidence for the sole purposes of supplying the recipient with needed engineering data. Its contents should not be disclosed or reproduced in any manner without the written consent of C. Cretors & Co. All Rights Reserved.

TOLERANCES XXX = ±0.020 XX.XX = ±0.005 FRACT. = ±1/64		NAME: CHEESE COATER - ASSEMBLY - CMT5	
DATE: 1/3/2008 DRAWN BY: SGG/vez DATE:		MATERIAL:	
125 SURFACE FINISH L ±.5°	ALL HOLES +.005 -.000	CHKD: APPROVED:	DATE: SCALE: 1/4" = 1" REV: B DWG. No.: B-CMT5

Item	Document	Title	Qty
1	I274-2	BLOWER-120V	1
2	I6527	WHEEL SHAFT-THREADED-CMT	3
3	I605-1	RUBBER FOOT-PURCHASED	4
4	I2814	POLY WHEELS 4" - 1/2" BORE	3
5	5130	SWITCH-LIGHTED-230V	1
6	2168	CORD GRIP HEYCO-SR7K-2	1
7	I788	CORD - 10AMP,16-3, NEMA 5-15P	1
8	I2818	CLIP - RETAINING	6
9	I2813	POLY WHEELS-3" -1/2" BORE	1
10	I6698	MTR-1/30 HP-CMT-100 RPM	1
11	I6703	BEARING - CMT5	1
12	I6702	STANDOFF	4
13	I146	1/2-20 LOCKNUT	2
14	I6816	COATER MIXER TUMBLER STIFFENER	1
15	I6775	REAR WHEEL SUPPORT-CHEESE COATER	1
16	I0134	1/2" FLAT WASHER, T304SS, GR5	2
17	I6817	BASE SUPPORT-CHEESE COATER	1
18	I6812	ROLLER SUPPORT ASSY-CHEESE COATER	1
19	I6699	MOTOR SUPPORT-CHEESE COATER	1
20	I2834	WHEEL ASSY-CHEESE COATER	1
21	I6811-1	COATER MIXER BOWL - CMD	1
22	I2816	MIXER BLADE SUPPORT SHAFT	1
23	I2835	MIXING BLADE-MIXER/COATER	1
24*	5743	1/4" MED. SPLT L/W, SS	1
25*	I2628	1/4-20 X 5/8" HHCS - SS	1
26	I2829	NON SLIP TAPE	1

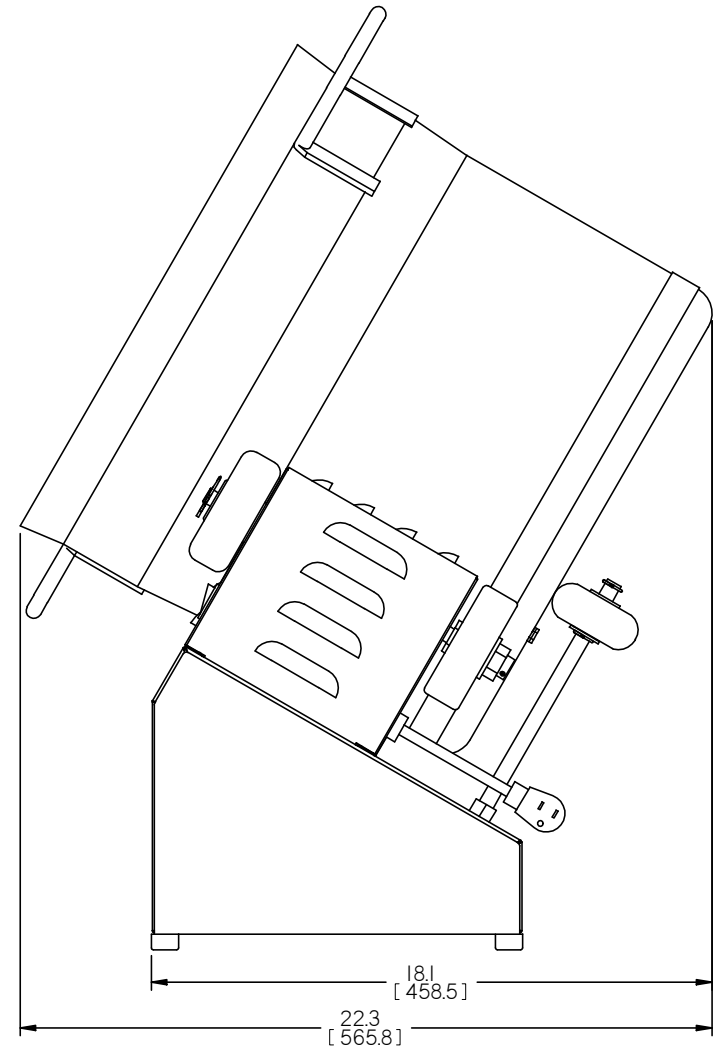
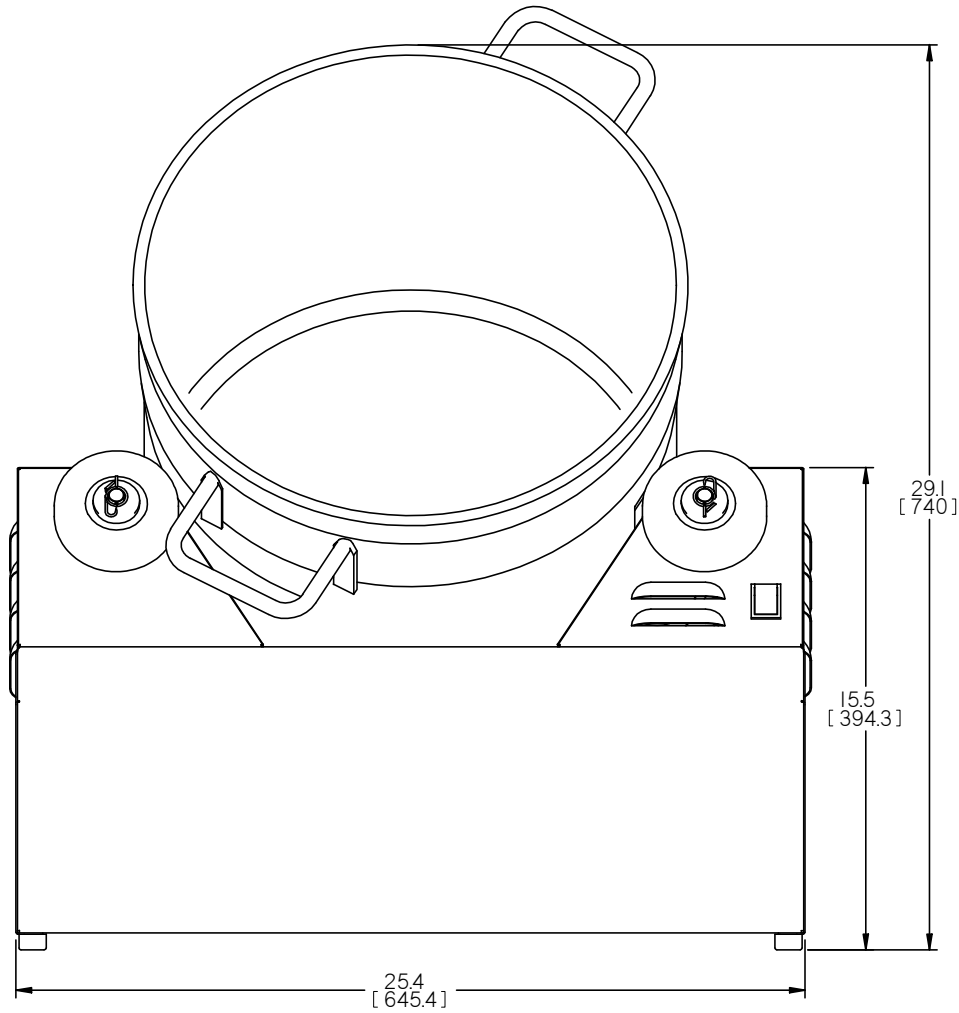


REV.	DESCRIPTION OF REVISION	BY	DATE
A	RELEASED FOR CUSTOMER REVIEW	bud	11/28/12

C. CRETORS & COMPANY
176 MITTEL DRIVE, WOOD DALE, IL 60191
TEL: 847-616-6900 FAX: 847-616-6970

This drawing contains information proprietary to C. Cretors & Co. and is furnished in confidence for the sole purposes of supplying the recipient with needed engineering data. Its contents should not be disclosed or reproduced in any manner without the written consent of C. Cretors & Co. All Rights Reserved.

TOLERANCES X.XX = ±0.020 X.XXX = ±0.005 FRACT. = ±1/64		NAME: COATER/MIXER TUMBLER	
125 SURFACE FINISH ±.5°	ALL HOLES +.005 -.000	DRAWN BY: bud	MATERIAL:
DATE	CHKD:	DATE:	SCALE:
APPROVED	DATE:	REV: A	DWG. No. CMTRA-X



			C. CRETORS & COMPANY 176 MITTEL DRIVE, WOOD DALE, IL 60191 TEL: 847-616-6900 FAX: 847-616-6970		TOLERANCES X.XX = ±0.020 X.XXX = ±0.005 FRACT. = ±1/64 125 SURFACE FINISH ∠ ±5° ALL HOLES +.005 -0.000		NAME: COATER/MIXER TUMBLER	
			This drawing contains information proprietary to C. Cretors & Co. and is furnished in confidence for the sole purposes of supplying the recipient with needed engineering data. Its contents should not be disclosed or reproduced in any manner without the written consent of C. Cretors & Co. All Rights Reserved.		DRAWN BY: bud DATE:		MATERIAL:	
A	RELEASED FOR CUSTOMER REVIEW	bud			11/28/12	CHKD:	DATE:	SCALE:
REV.	DESCRIPTION OF REVISION	BY	DATE			APPROVED	DATE:	REV: A
								CMTRA-X