



We invented the popcorn machine  
THEN JUST KEPT GOING!

---

176 MITTEL DRIVE, WOOD DALE, IL 60191

---

## Model E6500 Mas Grande Snack Cabinet Manual

120 Volt, Single Phase, 60 Hz  
230 Volt, Single Phase, 50/60 Hz (E)



**READ** and **UNDERSTAND** these operating and safety instructions before operating this Cretors machine

## TABLE OF CONTENTS

I.	Safety Alert Symbol .....	3
II.	Safety First .....	3
III.	Purpose of Manual .....	3
IV.	Product Identification .....	4
V.	Principles of Display Cabinet Operation.....	4
VI.	Control Switch .....	4
VII.	Installation Instructions .....	4
VIII.	Operating Instructions .....	5
IX.	Sanitation Instructions .....	5
X.	Service Instructions .....	6
XI.	Miscellaneous Information.....	13

---

## I. SAFETY ALERT SYMBOL

The symbol shown is used to call your attention to instructions concerning your personal safety and the safety of others. Watch for this symbol. It points out important safety precautions. It means **ATTENTION! Be Alert! Your personal safety is involved!** Read the message that follows and be alert to the risk of personal injury or death.



---

## II. SAFETY FIRST



The information in this manual is essential for the safe installation and operation of your Cretors unit. The manual must be read and understood before installing, and operating the equipment, or equivalent training must be provided.



The employer shall instruct each employee in the recognition and avoidance of unsafe conditions, as well as, the regulations applicable to his work environment and to control or eliminate any hazards or other exposure to illness or injury. Ref.: 29 CFR 1926.20 (b)(4)(a)(2)



It is understood that safety rules within individual companies vary. If a conflict exists between the safety procedures contained in this manual and the rules of a using company, the more stringent rule should take precedence.

---

## III. PURPOSE OF MANUAL

This instruction manual is intended to familiarize owners with the operation and safety procedures associated with this Cretors machine.

It is important that this manual be kept available to operating personnel.

---

## IV. PRODUCT IDENTIFICATION

### CRETORS MAS GRANDE DISPLAY CABINET

MODEL	MODEL 6500 POPCORN DISPLAY CABINET
Electrical:	120Volt, 60 Cycle 1050 Watts
Dimensions:	23in x 34.75in x 31in
Net Weight:	78 Lbs. (35.5 Kgs)

MODEL	MODEL 6500 POPCORN DISPLAY CABINET
Electrical:	230Volt, 50/60 Cycle 1050 Watts
Dimensions:	23in x 34.75in x 31in
Net Weight:	78 Lbs. (35.5 Kgs)

---

## V. PRINCIPLES OF DISPLAY CABINET OPERATION

### Theory and Observations of Display Cabinet Operation

The Display/Warmer Cabinets hold nacho chips, popcorn, or other snacks to maximize the sell ability of snacks. Load and un-load product through the large doors on the unit's front for easy storage and retrieval of product. The unit features a corrosion-resistant design and tempered glass for easy cleaning; the surface will not scratch or discolor. The unit's door is easily-removable, for cleaning. Rubber feet prevent skidding on counter top surfaces. The cabinet is provided with internal light, forced reticulating hot air and a heat pad to keep product warm.

---

## VI. CONTROL SWITCH

MAIN POWER SWITCH

-Controls lights and cabinet heat.

---

## VII. INSTALLATION INSTRUCTIONS

### 1. Location

Choose a location for your Cretors Display Cabinet to maximize the ease of operation and maintenance procedures. Check your local building and fire codes for location restrictions.

### 1. Power Supply

Check the nameplate to determine the required power supply.



Connect your cabinet only to the correct power source.



Make certain the main power switch on the cabinet is in the 'OFF' position when plugging into power source.

---

## VIII. OPERATING INSTRUCTIONS



Do not attempt to operate your Cretors Display Cabinet until you have read and understood this manual. Failure to do so may result in serious injury or death.



Do not attempt to operate your Cretors unit unless the installation instructions have been strictly adhered to. Failure to do so may result in serious injury or death.



Do not use an extension cord.

1. Turn the display cabinet switch "ON" to turn on lights and conditioner.
2. Fill containers as desired and place them on the display cabinet shelves.
3. Keep doors closed to keep products crisp and fresh.

This display cabinet uses a conditioner system to keep the products crisp and fresh. Do not use display cabinet to hold any other products, especially potentially hazardous foods.



Operate your display cabinet only under sanitary condition (SEE SANITATION INSTRUCTIONS).

**For service technician:** Make sure the machine is unplugged. To replace the halogen bulb, remove the hardware, bracket and sign. Remove the bulb from the mounting bracket and pull out old bulb from the socket. Install new bulb by pushing bulb pins into socket, and inserting bulb back into the mounting bracket.

**For service technician:** Make sure the machine is unplugged. To replace the fluorescent bulb, remove the hardware, bracket and sign. Remove the bulb from the sockets by rotating and pull. Install new bulb by pushing bulb pins into socket and rotating.

---

## IX. SANITATION INSTRUCTIONS



Be certain the machine is turned off and the power is unplugged before sanitizing this unit unless a specific cleaning procedure requires power. Failure to do so could result in serious injury or death. Do not clean heated surfaces until they have sufficient time to cool. Failure to do so may result in serious burns or scalds.



Do not immerse the unit in water. This will damage the electrical components, and may cause short circuits, resulting in an electrical shock hazard if power is applied. This unit should not be cleaned with a water jet.

1. After unit has been allowed to cool and has been unplugged, remove any excess product remaining in the bottom.
2. Remove shelves and all screen covers.
3. A good quality stainless steel cleaner is best for the metal.
4. Use a non-abrasive cloth and cleaning products that are non-corrosive, non-abrasive, and food safe.
5. Clean and rinse screens then sanitize.
6. Replace shelves, screens, and doors after clean and dry.

## X. SERVICE INSTRUCTIONS



Only a qualified person should perform the following diagnostic checks, and, if necessary, corresponding adjustments and repairs. Many of the following procedures may present an electrical shock hazard and can cause serious injury or death.



Perform work only on de-energized circuits. Failure to do so may lead to electrical shock resulting in personal injury or death.

### A. Parts

When ordering parts, refer to the recommend spare parts list included with this manual or wiring diagram. Always supply the serial number and model number of your unit.

### B. Check Unit Periodically

Periodically check electrical switch and cord for signs of wear. Check all screws and rivets for tightness.

### C. To Access Electrical Components

To access all electrical components, unplug power cord from outlet, and then lay unit on its side and remove the four screws from the bottom cover, exposing heating element, switch, and wiring. **THIS UNIT IS NOT FUSED.**

#### **XIV. Miscellaneous Information**

This unit is not intended for use by persons (including children) with reduced physical, sensory or mental capabilities, or lack of experience and knowledge, unless they have been given supervision or instruction concerning use of the appliance by a person responsible for their safety.

Children should be supervised to ensure that they do not play with the appliance.

If the supply cord is damaged, it must be replaced by the manufacturer, its service agent or similarly qualified persons in order to avoid a hazard.

If you have questions regarding the operation, cleaning or warranty of your unit, contact your local distributor or the Customer Service Department at C. Cretors and Company at (800) 228-1885.

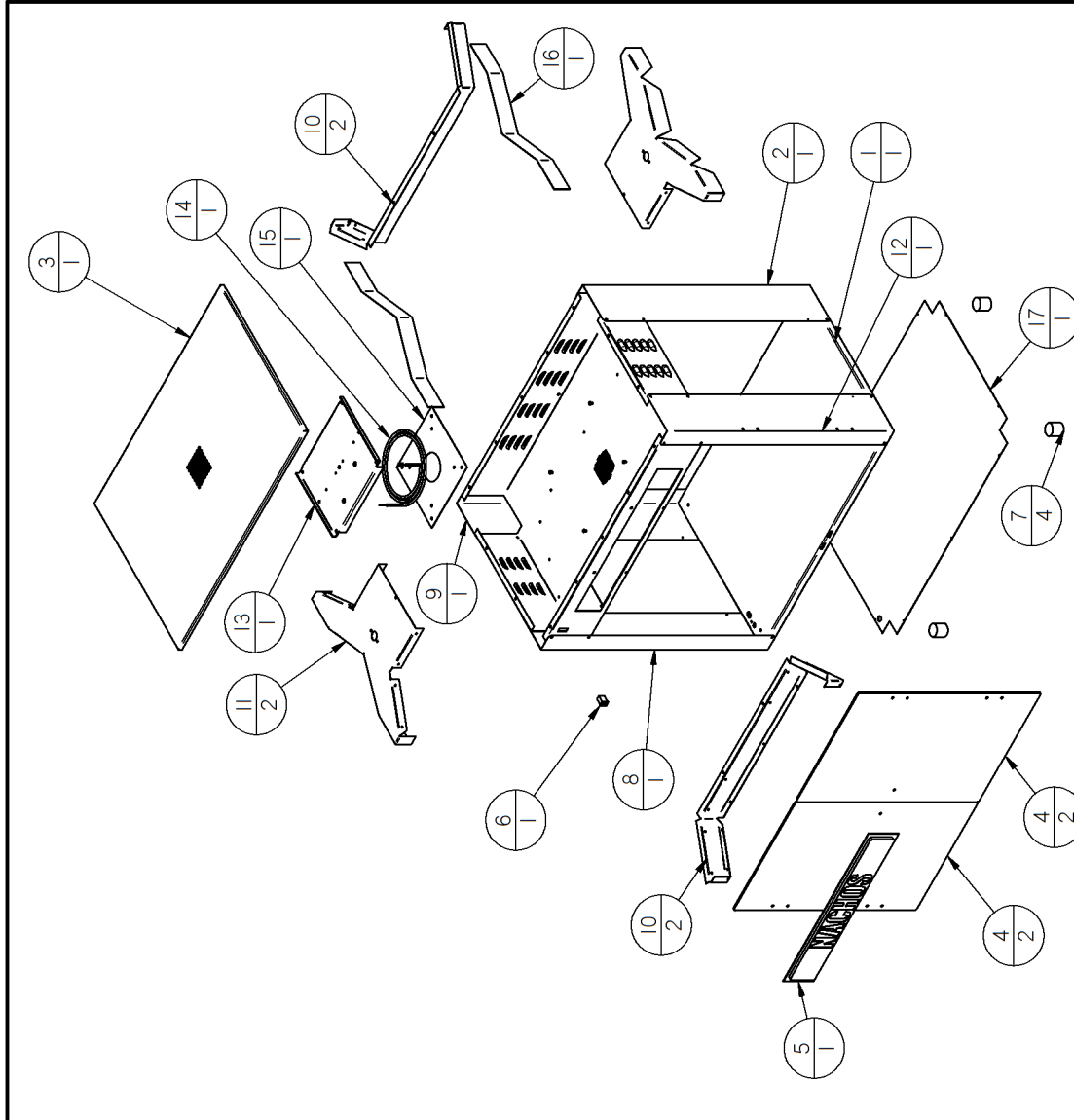
Cretors guarantees this unit to be free of defects in parts, materials and workmanship for two years. Please fill out the factory registration card and return it to the factory to activate your warranty.



*C. CRETORS AND COMPANY  
176 MITTEL DRIVE  
WOOD DALE, IL 60191  
PHONE (800) 228-1885 FAX (847) 616-6970  
WEBSITE: <http://www.cretors.com> Email: [postmaster@cretors.com](mailto:postmaster@cretors.com)*

Item Number	Document	Title	Quantity
1	6500A	MAS GRANDE - 6500 BOTTOM	1
2	6500BRR	CABINET PANEL - RIGHT REAR	1
3	6502	TOP COVER - 6500 MAS GRANDE	1
4	6511	N6500 NACHO CABINET DOOR	2
5	10487	SIGN-POPCORN-RED & YELLOW (LONG)	1
6	4922	SWITCH-SMALL ROCKER (ARCO)	1
7	6518	RUBBER FEET	4
8	6500BLF	CABINET PANEL - LEFT FRONT	1
9	6500BLR	CABINET PANEL - LEFT REAR	1
10	16542	FRONT WRAP - 6500 WARMER - ECHOLS	2
11	16548	DUCT COVER LEFT & RIGHT HAND - 6500 WARMER - ECHOLS	2
12	6500BRF	CABINET PANEL - RIGHT FRONT	1
13	16543	MOTOR DECK - 6500 WARMER - ECHOLS	1
14	EP4860	HEAT ELEMENT - 6500 WMR	1
15	16544	AIR INLET REDUCER - 6500 WARMER - ECHOLS	1
16	16547	PATCH - 6500 WARMER - ECHOLS	1
17	16722	BOTTOM COVER - MAS GRANDE	1

NOT SHOWN	
MOTOR	I6579-A
RIGHT HINGE	EP4866RM&F
LEFT HINGE	EP4866LM&F
POWER CORD	I597
MAGNETS	EPI832
FRONT GLASS	EP6512
SIDE GLASS (x2)	EP6513
AIRWAY BOX FRONT RIGHT	EP6500-BFRA
AIRWAY BOX FRONT LEFT	EP6500-BLFA
AIRWAY BOX REAR LEFT	EP6500-BLRA
AIRWAY BOX REAR RIGHT	EP6500-BRRA
BLOWER WHEEL	I6580
KNOBS	EP4539
10 AMP CORD	2852
THERMOSTAT	I198 (x2)



NAME: E6500 MAS GRANDE NACHO CABINET		MATERIAL:	
DATE	DRAWN BY: bjd	DATE	DWG No. E6500
CHKD:	SCALE:	DATE	REV:
APPROVED:	DATE:	DATE:	REV:

TOLERANCES X.XX = ±0.020 X.XXX = ±0.005 FRACT = ±1/64	125 SURFACE FINISH
1/4	±.5°
ALL HOLES .005	

C. CRETORS & COMPANY 3243 N. CALIFORNIA AVE., CHICAGO, IL 60618-5890 TEL: 773/588-1690 FAX: 773/588-2171	
This drawing contains information proprietary to C. Cretors & Co. and is furnished in confidence for the sole purposes of supplying the recipient with needed engineering data. Its contents should not be disclosed or reproduced in any manner without the written consent of C. Cretors & Co. All Rights Reserved.	
DATE	BY
08/01/12	bjd
DESCRIPTION OF REVISION	
REV	



