



We invented the popcorn machine
THEN JUST KEPT GOING!

176 MITTEL DRIVE, WOOD DALE, IL 60191

Model Nacho Alto Warmer and Display Cabinets Manual

120 Volt, Single Phase, 60 Hz (-A)

230 Volt, Single Phase, 50 Hz (-E)



READ and **UNDERSTAND** these operating and safety instructions before operating this Cretors machine

TABLE OF CONTENTS

I.	Safety Alert Symbol.....	3
II.	Safety First.....	3
III.	Introduction.....	3
IV.	Purpose of Manual.....	4
V.	Product Identification.....	4
VI.	Principles of Display Cabinet Operation.....	4
VII.	Control Switch.....	4
VIII.	Installation Instructions.....	4
IX.	Operating Instructions.....	5
X.	Sanitation Instructions.....	5
XI.	Service Instructions.....	6
	Troubleshooting.....	6

I. SAFETY ALERT SYMBOL

The symbol shown is used to call your attention to instructions concerning your personal safety and the safety of others. Watch for this symbol. It points out important safety precautions. It means **ATTENTION! Become Alert! Your personal safety is involved!** Read the message that follows and be alert to the risk of personal injury or death.



II. SAFETY FIRST



The information in this manual is essential for the safe installation and operation of your Cretors machine. The manual must be read and understood before installing, and operating the equipment, or equivalent training must be provided.



The employer shall instruct each employee in the recognition and avoidance of unsafe conditions, as well as, the regulations applicable to his work environment and to control or eliminate any hazards or other exposure to illness or injury. Ref.: 29 CFR 1926.20 (b)(4)(a)(2)



It is understood that safety rules within individual companies vary. If a conflict exists between the safety procedures contained in this manual and the rules of a using company, the more stringent rule should take precedence.

III. INTRODUCTION

This manual is filled with time-saving and money-saving information regarding your Cretors machine. There is nothing more important than the safety aids and warnings that are throughout this document. The Safety Alert Symbol is used to identify topics of primary safety concern wherever they appear.

If, after reviewing this manual, anything is unclear or technical problems are encountered, contact the distributor from whom you purchased your machine for assistance. If there are any additional questions, feel free to contact our Customer Service Department at the address and/or phone number listed on the last page of this manual. Always have the model and serial number of your machine available to assist in obtaining the correct information.

IV. PURPOSE OF MANUAL

This instruction manual is intended to familiarize owners with the operation and safety procedures associated with your Cretors machine.

It is important that this manual be kept available to operating personnel.

V. PRODUCT IDENTIFICATION

CRETORS POPCORN AND NACHO DISPLAY CABINET

MODEL	NAAON-X/NAECN-X -WARMER/DISPLAY CABINET
Electrical:	120 Volt, 60 Cycle, 555 Watts 230 Volt, 50 Cycle, 555 Watts

VI. PRINCIPLES OF DISPLAY CABINET OPERATION

Theory and Observations of Display Cabinet Operation

The Display/Warmer Cabinets hold nacho chips, popcorn, or other snacks to maximize the sell ability of snacks. Load and un-load product through the large door on the unit's front. The unit features a corrosion-resistant design and tempered glass for easy cleaning; the surface will not scratch or discolor. The unit's doors are easily-removable, for cleaning. Rubber feet prevent skidding on counter top surfaces. The cabinet is provided with forced hot air to keep product warm and lighted cabinet and sign for enhanced merchandizing.

VII. CONTROL SWITCH

MAIN POWER SWITCH	-Controls light and cabinet heat.
-------------------	-----------------------------------

VIII. INSTALLATION INSTRUCTIONS

1. Location

Choose a location for your Cretors Display/Warming Cabinet to maximize the ease of operation and maintenance procedures. Check your local building and fire codes for location restrictions.

2. Power Supply

Check the nameplate to determine the required power supply.



Connect your cabinet only to the correct power source.



Make certain the main power switch on the cabinet is in the 'OFF' position when plugging into power source.

3. Install the racks

Install the clips in all four corners at the same height, as desired. The unit is provided with six (6) racks and twenty-four (24) clips which can be installed to accommodate different size packaging and for optimal merchandizing. Rack supports snap into place.

IX. OPERATING INSTRUCTIONS



Do not attempt to operate your Cretors Display Cabinet until you have read and understood this manual. Failure to do so may result in serious injury or death.



Do not attempt to operate your Cretors machine unless the installation instructions have been strictly adhered to. Failure to do so may result in serious injury or death.



Operate your display cabinet only if it is in sanitary condition (SANITATION INSTRUCTIONS). Failure to do so may result in illness to your customers.

1. Turn on rocker switch to turn on light, blower and heat.
2. Load unit with product. Do not overfill the cabinet.
3. Dispense product through the front door. If machine is ordered as pass thru, the unit can be loaded and unloaded from either side.

X. SANITATION INSTRUCTIONS



Be certain the machine is turned off and the power is unplugged before sanitizing this machine, unless a specific cleaning procedure requires power to the machine. Failure to do so could result in serious injury or death.



Do not clean heated surfaces until they have been given sufficient time to cool. Failure to do so may result in serious burns or scalds.



Do not immerse the cabinet in water. This will damage the electrical components, and may cause short circuits, resulting in an electrical shock hazard if power is applied.

1. After unit has been allowed to cool and has been unplugged, remove any excess product remaining in the bottom.
2. Clean all surfaces with a non-abrasive food safe cleaner.



This appliance should not be cleaned with a water jet.

XI. SERVICE INSTRUCTIONS



Only a qualified person should perform the following diagnostic checks, and, if necessary, corresponding adjustments and repairs. Many of the following procedures may present an electrical shock hazard and can cause serious injury or death.



Perform work only on de-energized circuits. Failure to do so may lead to electrical shock resulting in personal injury or death.

A. Parts

When ordering parts, refer to the recommend spare parts list included with this manual or wiring diagram. Always supply the serial number and model number of your machine.

B. Check Unit Periodically

Periodically check electrical switch and cord for signs of wear. Check all screws and rivets for tightness.

C. To Access Electrical Components

To access all electrical components, unplug power cord from outlet, and then lay unit on its side and remove the four screws from the bottom cover, exposing heating element, switch, and wiring. **THIS UNIT IS NOT FUSED.**

D. Troubleshooting

PROBLEM	POSSIBLE CAUSE	ACTION
Unit will not heat.	Machine unplugged or not switched on.	Plug unit in. Turn on power.
	Loose connection to heat element or failure.	Repair connection or replace element
	Blower unplugged or blocked	Check for any blockage and clear
	Thermostat failed	Replace thermostat

This manual is filled with timesaving and money-saving information regarding your Cretors Display Cabinet. There is nothing, however, more important than the safety aids and warnings found throughout this document.

If you have any questions, feel free to contact our Customer Service Department at 800-840-6166.

Additional copies of this manual can be obtained from Customer Service.

Cretors warrants this machine to be free of defects in parts, materials, and workmanship for one year. Please complete and return the registration card to activate your warranty. If you have questions concerning the warranty, please contact Customer Service at 800-840-6166.

CUSTOMER SERVICE HOURS:

Our office hours are 8:30 a.m. to 5 p.m. (U.S. Central Time) Monday through Friday. An answering machine is in use all other times.

SHIPPING POLICY:

We make every effort to ship approved orders on the requested ship date. If a delay in shipment is necessary, you will be notified. Pallet quantities vary by product. Please inquire when placing order. Most of our products are shippable by UPS.

DAMAGE OR SHORTAGE POLICY:

We recommend that you do not sign the delivery receipt until after inspecting the product(s). Claims can be filed if a shortage is observed, but only when it has been noted on the delivery receipt.



C. CRETORS AND COMPANY
3243 N. CALIFORNIA AVENUE
CHICAGO, IL 60618

PHONE (773) 588-1690, (800) 228-1885, FAX (773) 588-2171

WEB SITE: <http://www.cretors.com> Email: postmaster@cretors.com

Cretors joins the information age! Check out our links <http://www.twitter.com>

<http://www.facebook.com/pages/Chicago-IL/C-Cretors-Co/90143449620>



RECOMMEND SPARE PARTS LIST

PART DESCRIPTION	PART NUMBER
DOOR HINGE	16938-LH or -RH
LIGHT STRIP	18410-ASSY
DOOR	16924-L or -R
KNOB	1292
MAGNET	19122
FAN	16996-A/ -E
HEAT ELEMENT	16997-A/ -E
RACK SUPPORT CLIPS	16807
RACKS	16904



We invented the popcorn machine
THEN JUST KEPT GOING!

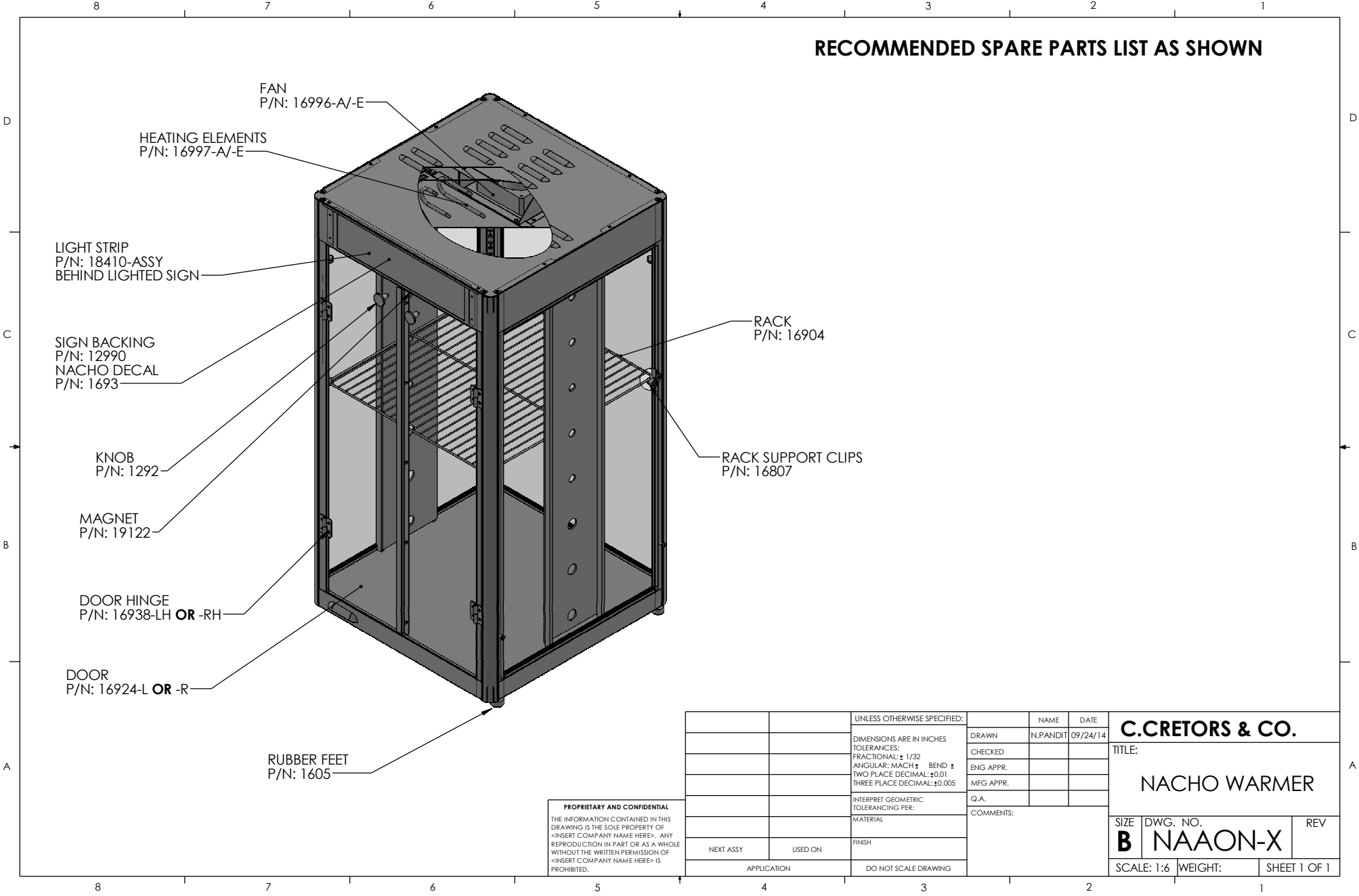
C. CRETORS AND COMPANY
176 MITTEL DRIVE
WOOD DALE, IL 60191

PHONE (773) 588-1690, (800) 228-1885, FAX (847) 616-6970

WEB SITE: <http://www.flo-thru.com> Email: postmaster@cretors.com

Email: postmaster@cretors.com

RECOMMENDED SPARE PARTS LIST AS SHOWN



PROPRIETARY AND CONFIDENTIAL
 THE INFORMATION CONTAINED IN THIS DRAWING IS THE SOLE PROPERTY OF <INSERT COMPANY NAME HERE>. ANY REPRODUCTION IN PART OR AS A WHOLE WITHOUT THE WRITTEN PERMISSION OF <INSERT COMPANY NAME HERE> IS PROHIBITED.

		UNLESS OTHERWISE SPECIFIED:	NAME	DATE
		DIMENSIONS ARE IN INCHES	DRAWN	N.PANDIT 09/24/14
		TOLERANCES:	CHECKED	
		FRACTIONAL: ± 1/32	ENG APPR.	
		ANGULAR: MACH ± BEND ±	MFG APPR.	
		TWO PLACE DECIMAL: ±0.01	Q.A.	
		THREE PLACE DECIMAL: ±0.005	COMMENTS:	
		INTERPRET GEOMETRIC TOLERANCING PER:		
		MATERIAL		
NEXT ASSY	USED ON	FINISH		
APPLICATION		DO NOT SCALE DRAWING		

C. CRETORS & CO.			
TITLE:			
NACHO WARMER			
SIZE	DWG. NO.	REV	
B	NAAON-X		
SCALE: 1:6	WEIGHT:	SHEET 1 OF 1	

NACHO ALTO WARMER
 WIRING DIAGRAM - 120V 50/60Hz.
 BEGINING SERIAL NO. 2009

DOC: NAAR2

09/2020

