

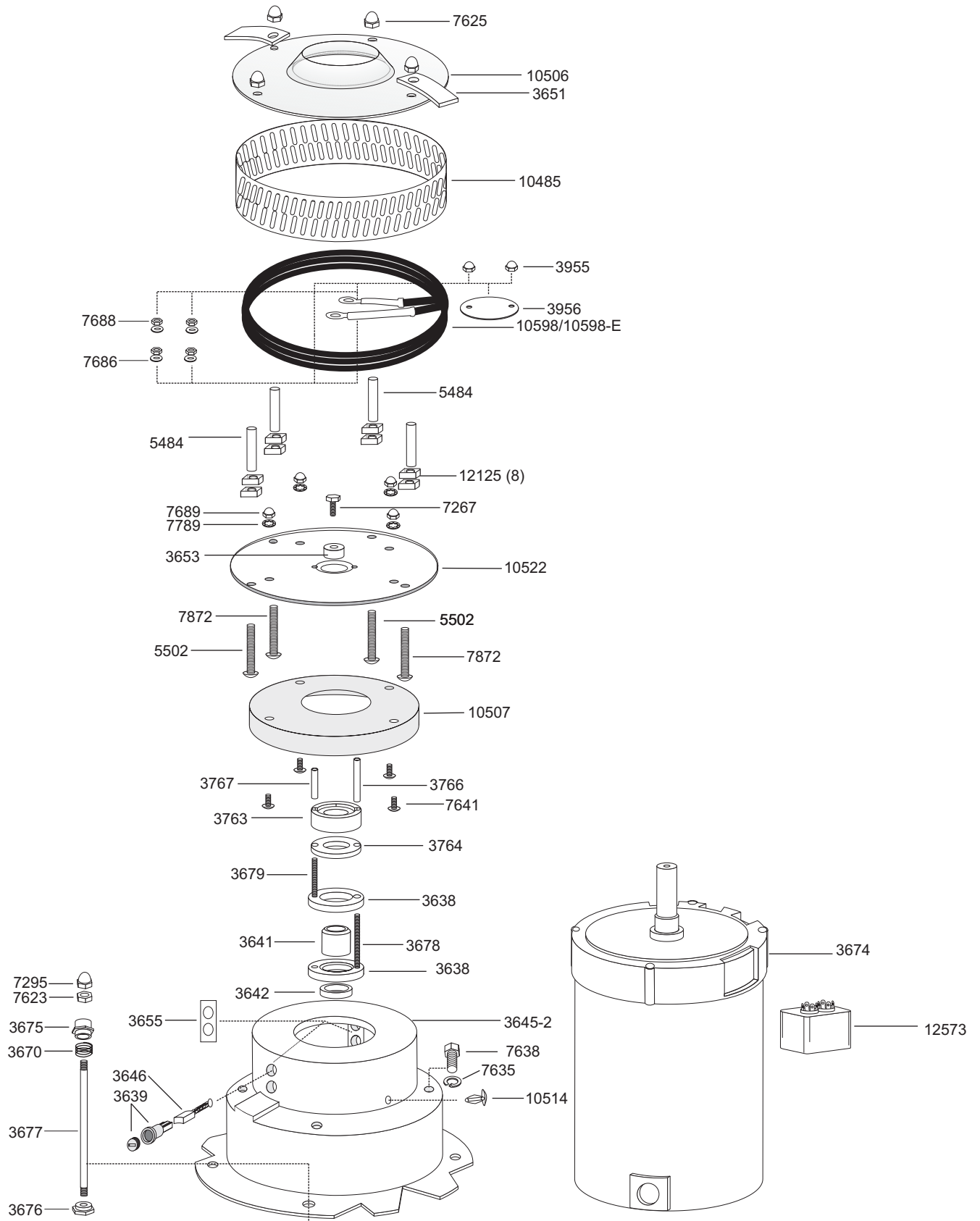
RINGMASTER™ 7" COTTON CANDY MACHINE

Beginning Serial No. 99020966

DOC RM720001

RM7-A/E-2.0-A

05/04



C. CRETORS AND COMPANY

176 MITTEL DRIVE

WOOD DALE, IL 60191

PHONE: (847)616-6900, (800)228-1885, FAX: (847)616-6970

WEB SITE: <http://www.cretors.com> Email: postmaster@cretors.com

RINGMASTER™ 7" COTTON CANDY MACHINE

DOC RM720001

RM7-A/E-2.0-A

Beginning Serial No. 99020966

05/04

3638	SLIP RING	12573	CAPACITOR- 7.5 mF
3639	BRUSH HOLDER (CAP & CLIP)		
3641	CENTER RING INSULATOR		
3642	BOTTOM RING INSULATOR		
3645-2	MOTOR MOUNT		
3646	BRUSH & SPRING		
3651	LEATHER FLOATER		
3653	RETAINING WASHER		
3655	BRUSH HOLDER ALIGNMENT PLATE		
3659	RETAINING RING		
3670	MOTOR MOUNT SPRING		
3674	MOTOR		
3675	TOP SPRING BUSHING		
3676	BOTTOM SPRING BUSHING		
3677	SPRING SUPPORT ROD		
3678	BRASS RING STUD-LONG		
3679	BRASS RING STUD SHORT		
3763	SUPPORT RING		
3764	INSULATOR WASHER		
3766	INSULATOR TUBE-LONG		
3767	INSULATOR TUBE-SHORT		
3955	INSULATOR NUTS		
3956	TOP CONTACT INSULATOR		
5484	SS SPACER (1-3/8")		
5502	10-32 x 2 RD HD SCREW		
7267	1/4-28 x 7/8 HEX BOLT W/ NYLOK		
7295	10-32 BLIND NUT		
7635	3/8" MED. SPLIT LOCKWASHER		
7638	3/8-16 x 1 HEX BOLT		
7641	8-32 x 1/4 SS TRUSS HEAD		
7686	8-32 BRASS WASHER		
7688	8-32 BRASS NUT		
7689	8-32 CAP NUT		
7789	#8 STAR LOCKWASHER		
7872	10-32 x 2-3/16 ROUND HEAD		
10485	SS FLOSS RING		
10506	SPINNER HEAD TOP		
10507	SPINNING SUGAR GUARD		
10514	PLUG		
10522	SPINNER HEAD BOTTOM		
10598	ELEMENT-120V		
10598-E	ELEMENT-230V		
12125	10-32 SQUARE NUT		

C. CRETORS AND COMPANY

176 MITTEL DRIVE

WOOD DALE, IL 60191

PHONE: (847)616-6900, (800)228-1885, FAX: (847)616-6970

WEB SITE: <http://www.cretors.com> Email: postmaster@cretors.com

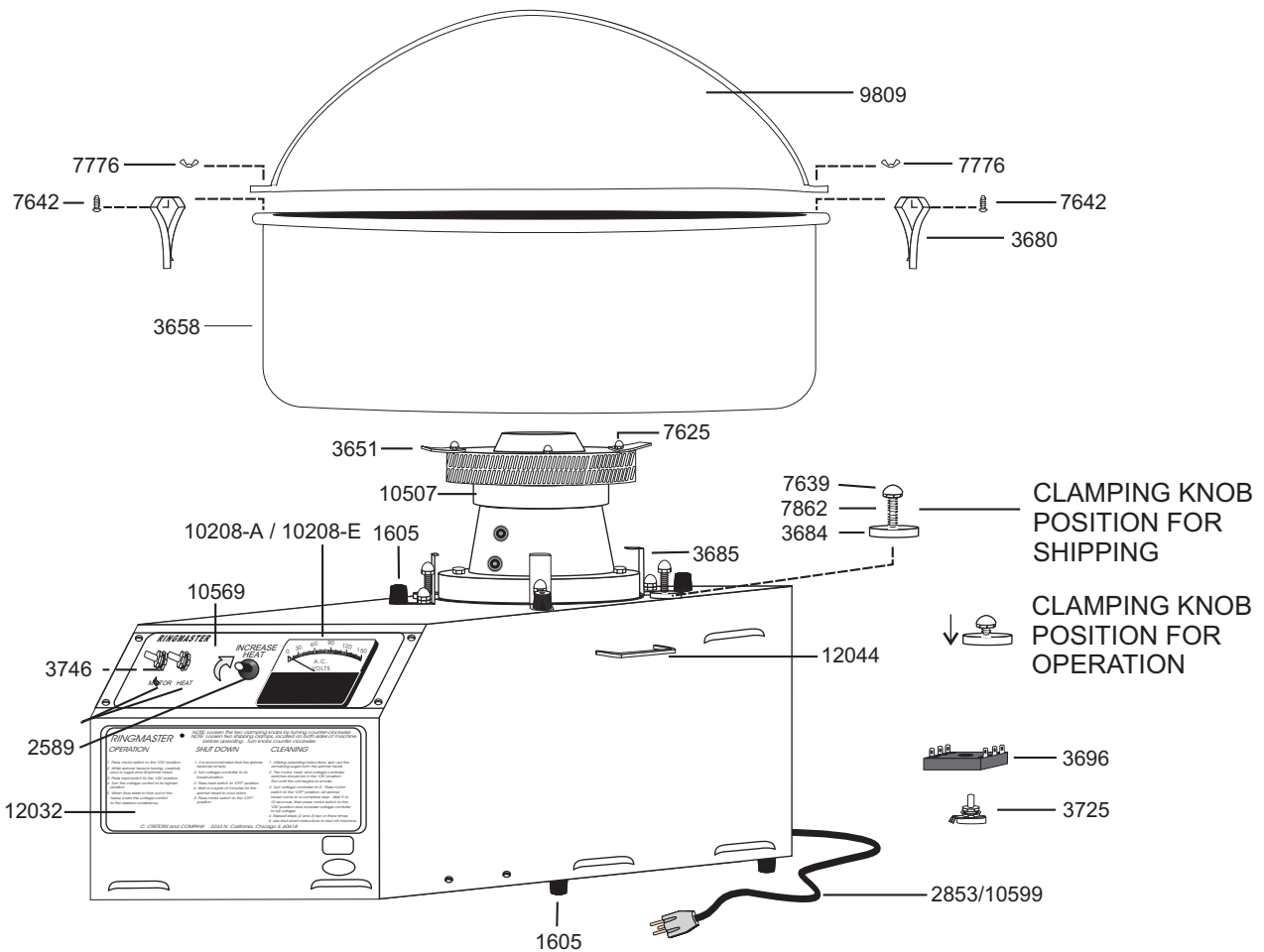
**RINGMASTER™ 7" INDUSTRIAL
COTTON CANDY MACHINE**

DOC: Rm730003

RM7-A/E-3.0-B
11/09

120 VOLT/60 HZ Beginning Serial No. 09110457
230 VOLT/50 HZ Beginning Serial No.

- | | | | |
|--------|------------------------------------|-------------------|--------------------------------|
| 1274-1 | BLOWER CORD SET | 7642 | 8-32 x 3/8 SS TRUSS HEAD |
| 1274-2 | BLOWER 120V | 7776 | 8-32 WING NUT |
| 1274-C | BLOWER 230V | 7862 | 1/4-20 X 3 SS ROUNDED HEAD |
| 1605 | RUBBER FOOT | 9809 | RINGMASTER MINI-CLIP ON BUBBLE |
| 2589 | TIMER ADJUSTMENT KNOB | 10208-A/E | VOLT METER 120V/230V |
| 2853 | EURO CORD SET - 16 AMP
(EXPORT) | 10507 | GUARD SUGAR |
| | | 10569 | SWITCHPLATE - DECAL |
| 3651 | LEATHER FLOATER | 10599 | CORD 30 AMP 10-3 NEMA |
| 3658 | BOWL | 12032 | INSTRUCTION DECAL |
| 3680 | CLIP STABILIZER | 12044 | HANDLE (2) |
| 3684 | CLAMPING KNOB | | |
| 3685 | ANGLE | NOT SHOWN: | |
| 3696 | VOLT CONTROL - DUAL VOLTAGE | 1517 | NAMEPLATE |
| 3725 | POTENTIOMETER W/ WIRES | 3636 | STABILIZER MESH W/ CLIPS (SET) |
| 3746 | SWITCH (2) | 3652 | STABILIZER MESH |
| 7625 | 10-32 HIGH CROWN CAP NUT | 3747 | HEAT SINK COMPOUND |
| 7639 | 1/4-20 CAP NUT | 16420 | BLOWER COVER |

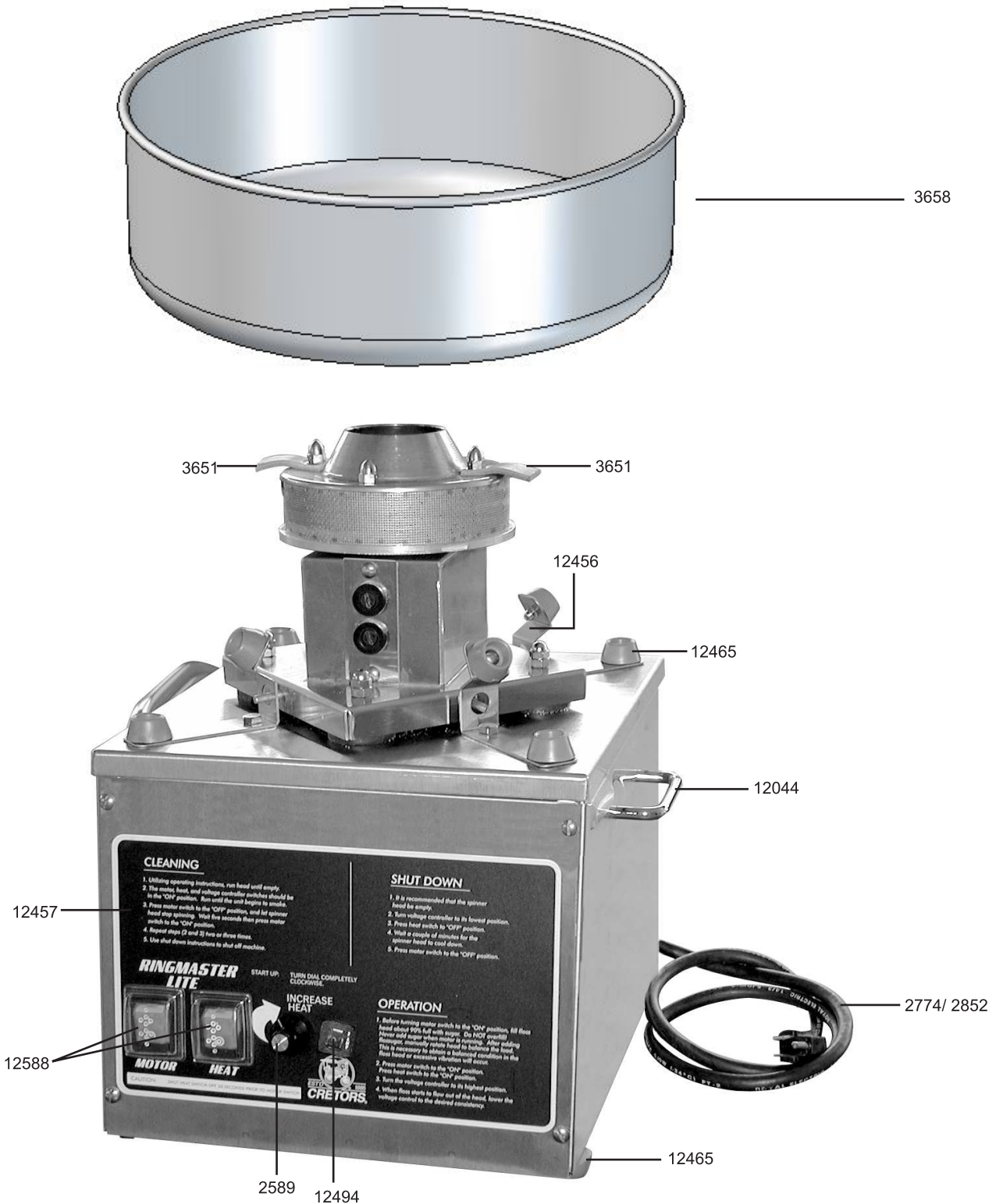


RINGMASTER™ LITE COTTON CANDY MACHINE
120V/230V

Beginning Serial No. 010710206

DOC RML30001

RML-A/E-3.0-A
 08/01



C. CRETORS AND COMPANY
 176 MITTEL DRIVE
 WOOD DALE, IL 60191
 PHONE: (847)616-6900, (800)228-1885, FAX: (847)616-6970
 WEB SITE: <http://www.cretors.com> Email: postmaster@cretors.com

RINGMASTER™ LITE COTTON CANDY MACHINE
120V/230V

DOC RML30001

RML-A/E-3.0-A
08/01

Beginning Serial No. 010710206

2589 TIMER ADJUSTMENT KNOB
2774 CORD - 20AMP, 12-3, NEMA 5-15P
2852 CORD - EXPORT
3658 BOWL
3651 LEATHER FLOATER
12044 HANDLE (2)
12456 BOWL SUPPORT BRACKET
12457 INSTRUCTIONAL - DECAL
12465 RUBBER FOOT
12494 CIRCUIT BREAKER 3 AMP
12588 SWITCH-LIGHTED - 230V BOOT(2)

NOT SHOWN

3636 STABILIZER MESH W/ CLIPS (SET)
3652 STABILIZER MESH
3680 CLIPS
3691 HEAT SINK COMPOUND 4 OZ. TUBE
3696 VOLT CONTROL
3725 POTENTIOMETER W/ WIRES
7642 8-32 x 3/8 SS TRUSS HEAD
7776 8-32 WING NUT
9809 MINI CLIP-ON BUBBLE

C. CRETORS AND COMPANY
176 MITTEL DRIVE
WOOD DALE, IL 60191

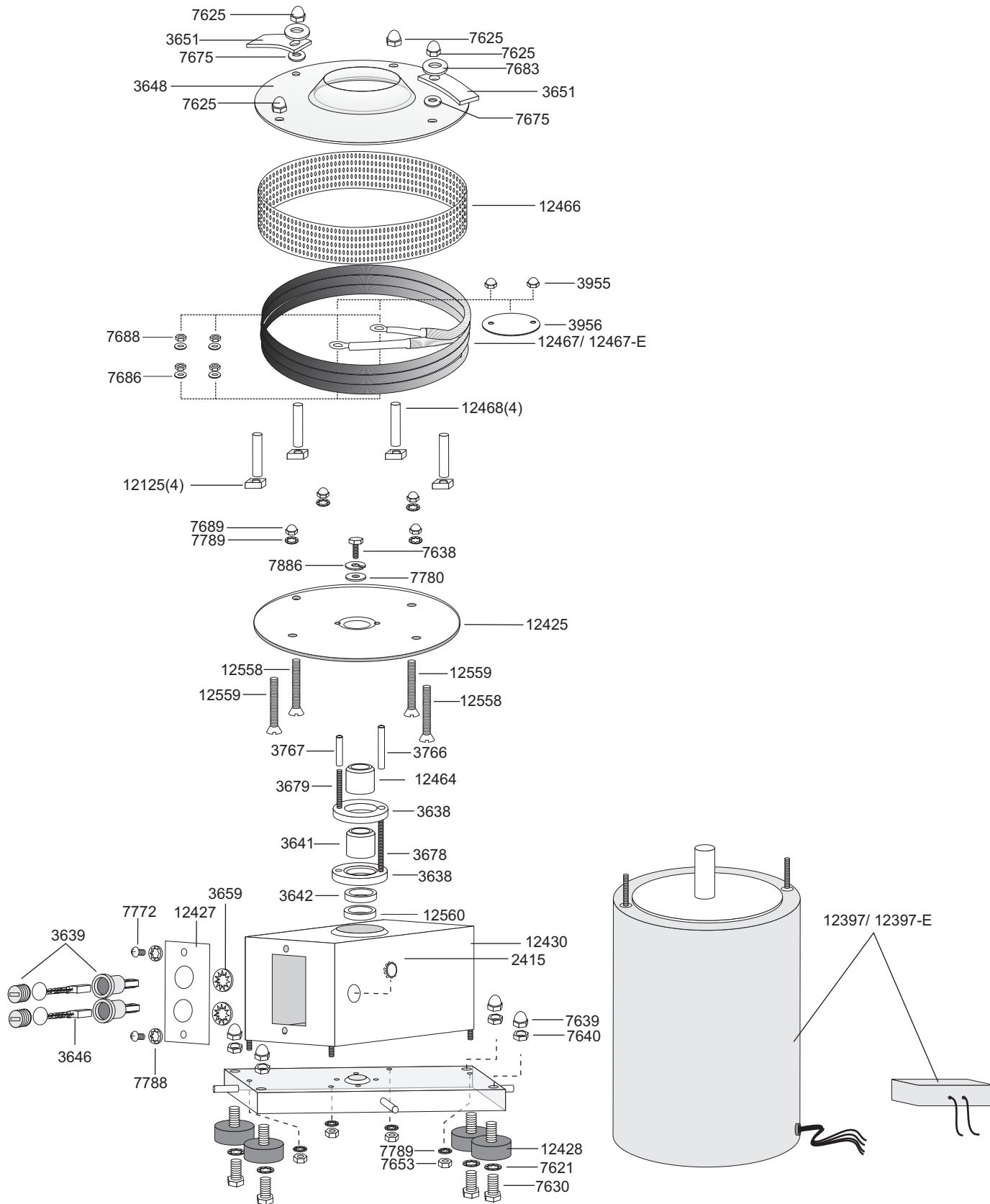
PHONE: (847)616-6900, (800)228-1885, FAX: (847)616-6970
WEB SITE: <http://www.cretors.com> Email: postmaster@cretors.com

RINGMASTER™ LITE COTTON CANDY MACHINE
120V/230V

DOC: RML20004

RML-A/E-2.0-D
 06/06

BEGINNING SERIAL: 01079960



C. CRETORS AND COMPANY
 176 MITTEL DRIVE
 WOOD DALE, IL 60191
 PHONE: (847)616-6900, (800)228-1885, FAX: (847)616-6970
 WEB SITE: <http://www.cretors.com> Email: postmaster@cretors.com

RINGMASTER™ LITE COTTON CANDY MACHINE
120V/230V

DOC: RML20004

RML-A/E-2.0-D
06/06

BEGINNING SERIAL: 01079960

2415	HOLE COVER	12467	ELEMENT-1100W - 120V
3638	SLIP RING	12467-E	ELEMENT - 1100W - 230V
3639	BRUSH HOLDER (CAP & CLIP)	12468	SPACER- SPINNER HEAD
3641	CENTER RING INSULATOR	12558	10-32 x 1-3/4 FLATHEAD SS
3642	BOTTOM RING INSULATOR	12559	10-32 x 2 SS FLATHEAD SCREW
3646	BRUSH & SPRING	12560	MOTOR SHAFT SEAL
3648	SPINNER HEAD TOP		
3651	LEATHER FLOATER		
3659	RETAINING RING		
3678	BRASS RING STUD-LONG		
3679	BRASS RING STUD SHORT		
3766	INSULATOR TUBE-LONG		
3767	INSULATOR TUBE-SHORT		
3955	INSULATOR NUTS		
3956	TOP CONTACT INSULATOR		
7621	1/4" INTERNAL TOOTH LOCKWASHER		
7623	10-32 HEX NUT (8)		
7625	10-32 CAP NUT		
7630	1/4-20 x 1/2 HEX BOLT		
7638	3/8-16x1 HEX BOLT		
7639	1/4-20 CAP NUT		
7640	1/4-20 HEX NUT		
7653	8-32 HEX NUT		
7675	#10 FLAT MONEL WASHER		
7683	3/16" SAE FLAT WASHER		
7686	#8 FLAT BRASS WASHER		
7688	8-32 BRASS HEX NUT		
7689	8-32 CAP NUT		
7772	6-32 x 1/4 BINDING HEAD		
7780	5/16" FLAT WASHER		
7788	#6 LOCKWASHER		
7789	#8 STAR LOCKWASHER		
7790	#10 STAR LOCKWASHER (4)		
7886	5/16 SPLIT RING LOCKWASHER		
12125	10-32 SQUARE NICKEL PLATED NUT		
12466	FLOSS RING		
12397	MOTOR -120V		
12397-E	MOTOR - 230V		
12425	SPINNER HEAD BOTTOM		
12427	BRUSH HOLDER PLATE- RML		
12428	VIBRATION MOUNT		
12430	MOTOR MOUNTING BASE		
12464	TOP RING INSULATOR-RML		

C. CRETORS AND COMPANY
176 MITTEL DRIVE
WOOD DALE, IL 60191

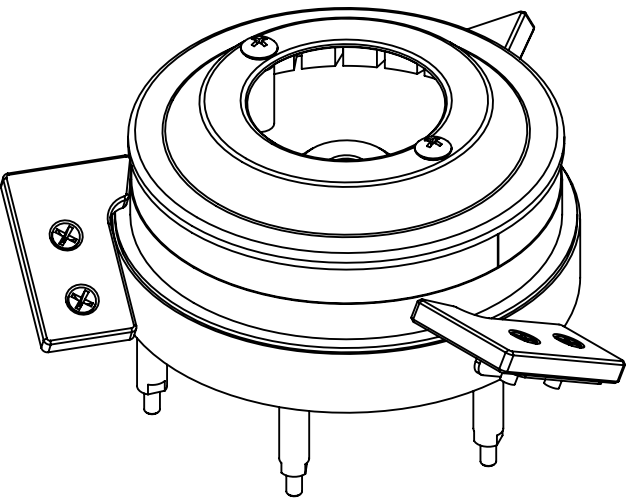
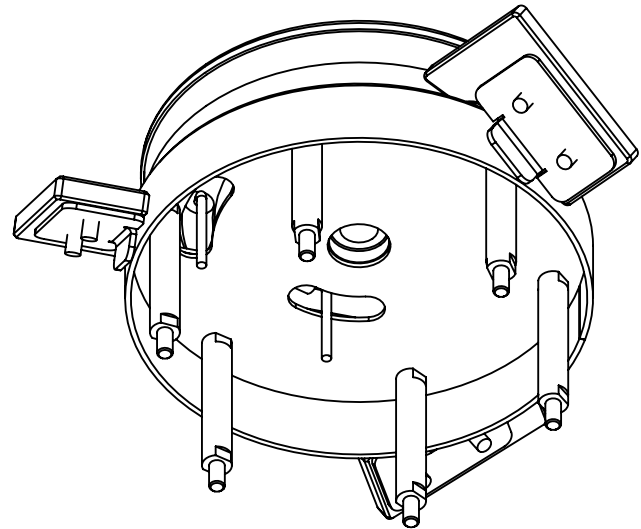
PHONE: (847)616-6900, (800)228-1885, FAX: (847)616-6970

WEB SITE: <http://www.cretors.com> Email: postmaster@cretors.com

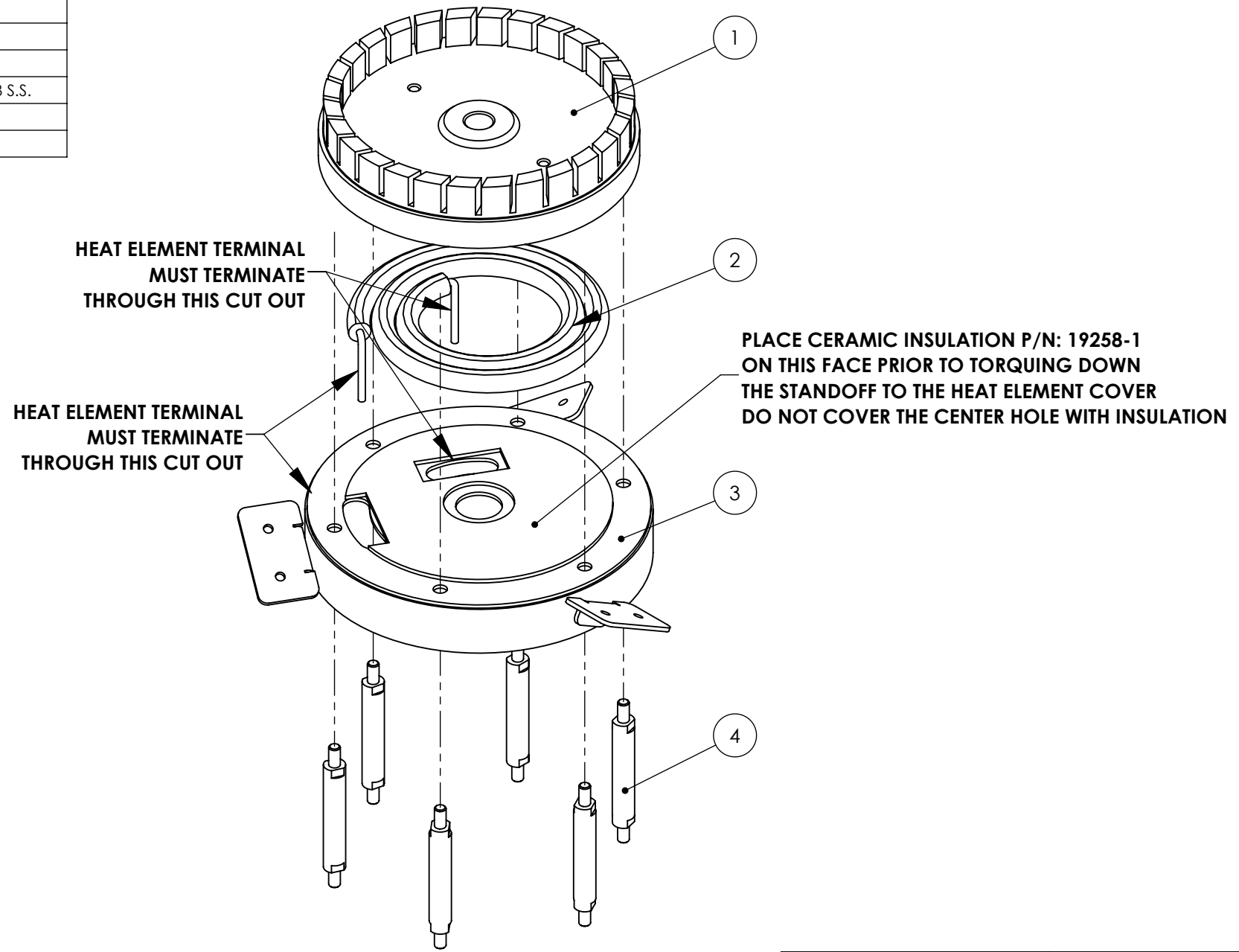
BILL OF MATERIALS			
ITEM #	Default/ QTY.	P/N	DESCRIPTION
1	1	20731	SPINNING HEAD, RINGMASTER FLITE
2	1	20736-A	HEAT ELEMENT, 850W, 120V, 17 OHMS
3	1	20737	COVER, HEAT ELEMENT, RINGMASTER FLITE
4	6	20743	STANDOFF, 1.75", #8-32, S.S.
5	2	20740	STANDOFF, 0.5", #8-32, S.S.
6	1	20734	SCREEN, SPINNING HEAD, RINGMASTER FLITE
7	1	20735	CHUTE, RINGMASTER FLITE, MODIFIED
8	2	7789	#8, INTERNAL TOOTH LOCKWASHER, STEEL NICKEL
9	2	7642	#8-32 X 3/8"LG FULLY THD, PHIL TRUSS HEAD MACHINE SCREW, 18-8 S.S.
10	3	21132	FLOATER, RINGMASTER FLITE
11	6	16968	#8-32 X 1/2"LG, PHIL FLAT HEAD MACHINE SCREW, 18-8 S.S.

NOTE: 19258-1 (CERAMIC INSULATION) IS REQUIRED FOR THIS ASSEMBLY

BOTTOM VIEW



STEP # 1



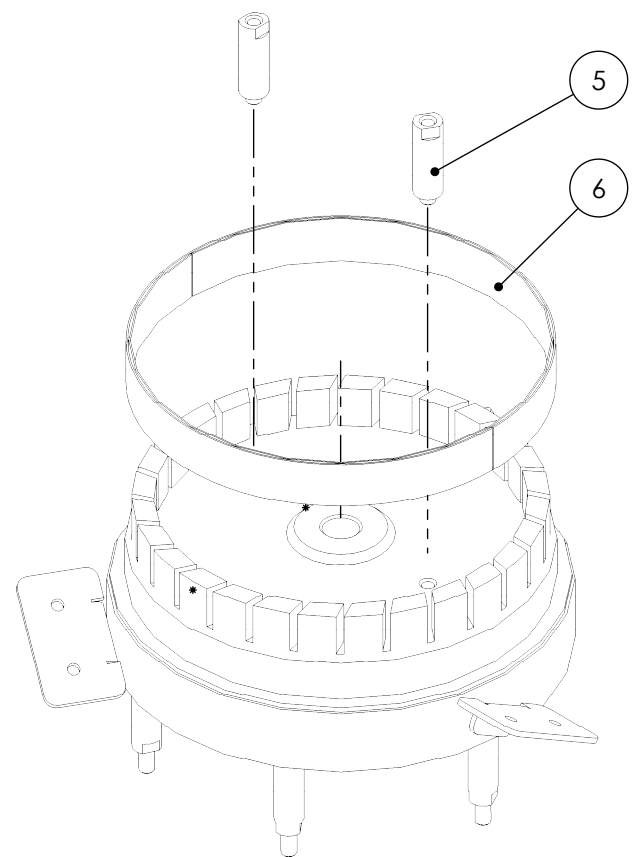
NOTES:
1. XXX.

- STANDARD NOTES:**
1. REMOVE SHARP EDGES AND BURRS.
 2. UNLESS SPECIFIED ALL DIMENSIONS ARE IN INCHES.
 3. REFERENCE DIMENSIONS ARE INDICATED IN PARENTHESIS.
 4. CRITICAL DIMENSIONS THAT NEED INSPECTION ARE INDICATED IN OBOUND BOX.
 5. T.S.C. STANDS FOR THEORITICAL SHARP CORNER & INS STANDS FOR INSIDE.
 6. FOR SHEET METAL, UNLESS SPECIFIED ALL DIMENSIONS ARE OUTSIDE.
 7. FOR SHEET METAL, FLAT PATTERNS ARE FOR REFERENCE ONLY.
 8. MINOR SCRATCHES ARE ALLOWED ON OPPOSITE SIDE OF MILL FINISH & #4 FINISH.

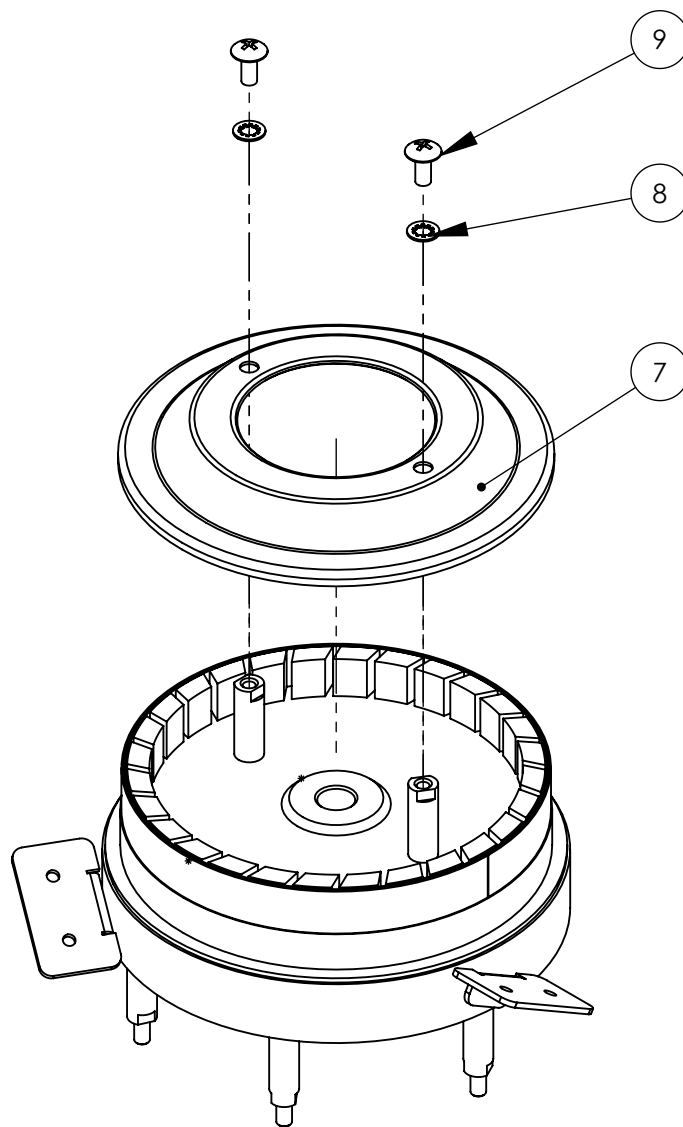
REVISIONS			
REV	DC #	APPROVED BY	APPROVED ON
-	-	-	-
-	-	-	-
A	-	nvidojevic	02/18/2019

<p>THIRD ANGLE PROJECTION</p>		<p>176 MITTEL DRIVE, WOOD DALE, IL 60191 www.cretors.com www.flo-thru.com</p>	
<p>TOLERANCES</p> <p>x.xx = ± 0.02 x.xxx = ± 0.01 ANGLES = ± 1° HOLES = +0.005 / -0 FINISH = 125Ra</p>		<p>DESCRIPTION</p> <p>HEAD ASSEMBLY, RINGMASTER FLITE, 120V</p>	
<p>B SIZE DRAWING</p>		<p>MATERIAL</p> <p>REFER INDIVIDUAL SUB-PARTS</p>	
<p>DRAWN BY</p> <p>ndarji</p>	<p>DRAWN DATE</p> <p>02/15/2019</p>	<p>DRAWING NUMBER</p> <p>20730-A</p>	
<p>APPROVED BY</p> <p>nvidojevic</p>	<p>APPROVED DATE</p> <p>02/18/2019</p>	<p>REVISION</p> <p>A</p>	
<p>THIS DRAWING CONTAINS INFORMATION PROPRIETARY TO C. CRETORS & CO. AND IS FURNISHED IN CONFIDENCE FOR SOLE PURPOSE OF SUPPLYING THE RECIPIENT WITH NEEDED ENGINEERING DATA. THE CONTENTS SHOULD NOT BE DISCLOSED OR REPRODUCED IN ANY MANNER WITHOUT WRITTEN CONSENT OF C. CRETORS & CO. ALL RIGHTS RESERVED.</p>			<p>APPROX. WEIGHT</p> <p>2.3 LBS</p> <p>SHEET</p> <p>1 OF 2</p>

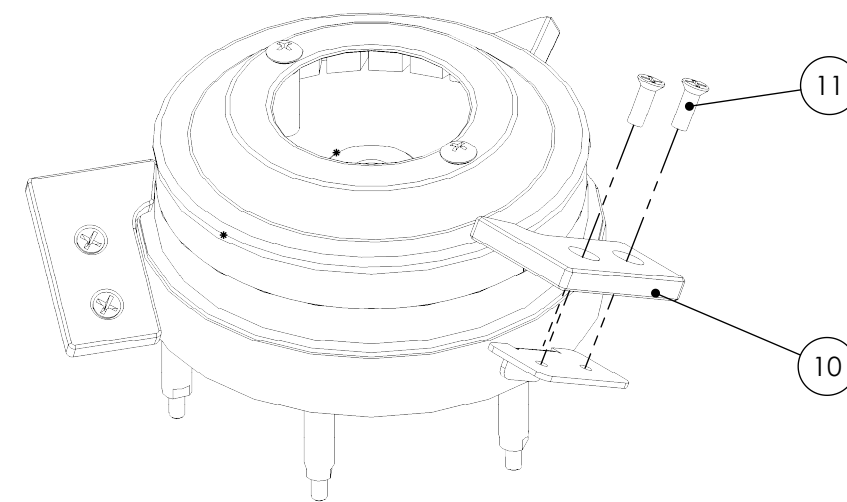
STEP # 2



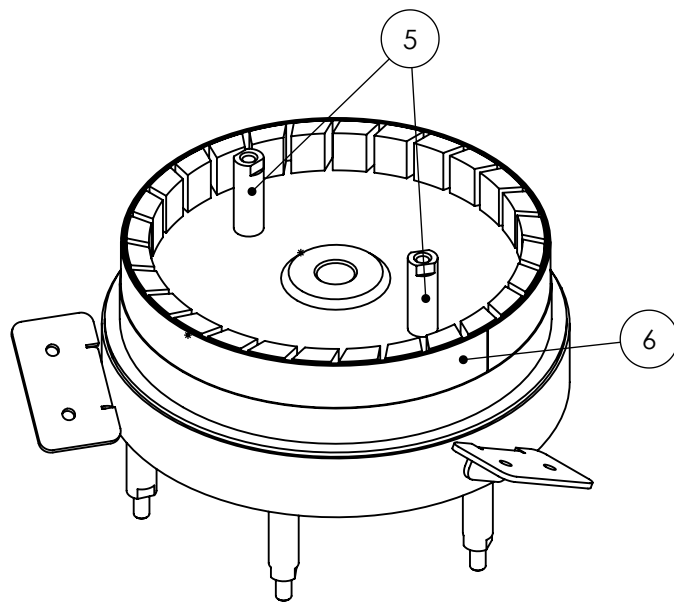
STEP # 3



STEP # 4



TYPICAL INSTALLATION 3 PLACES



STANDARD NOTES:

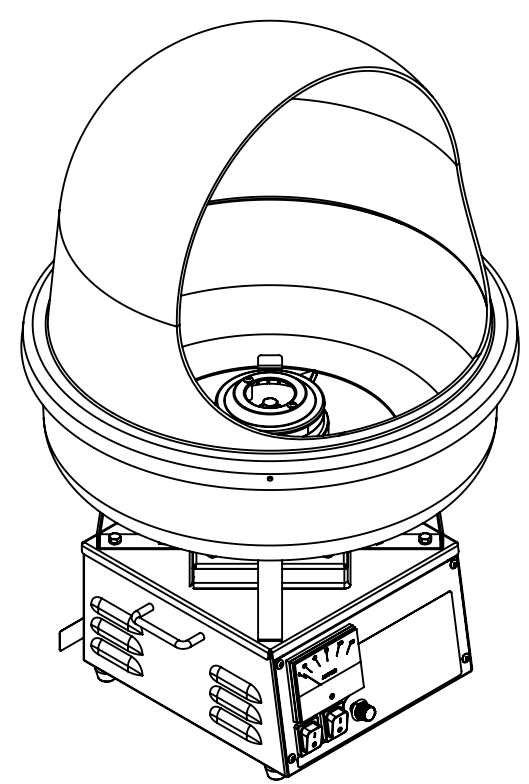
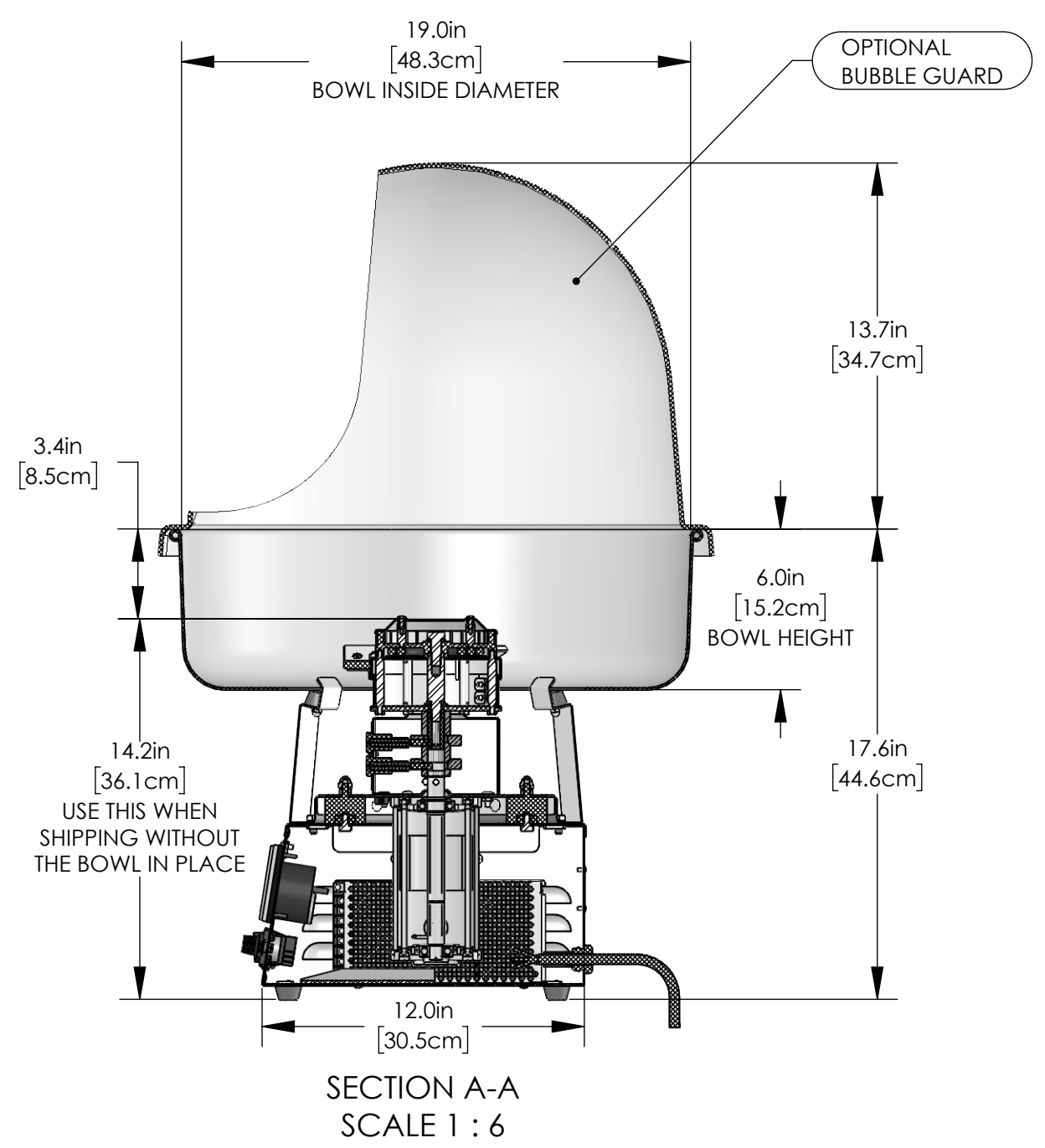
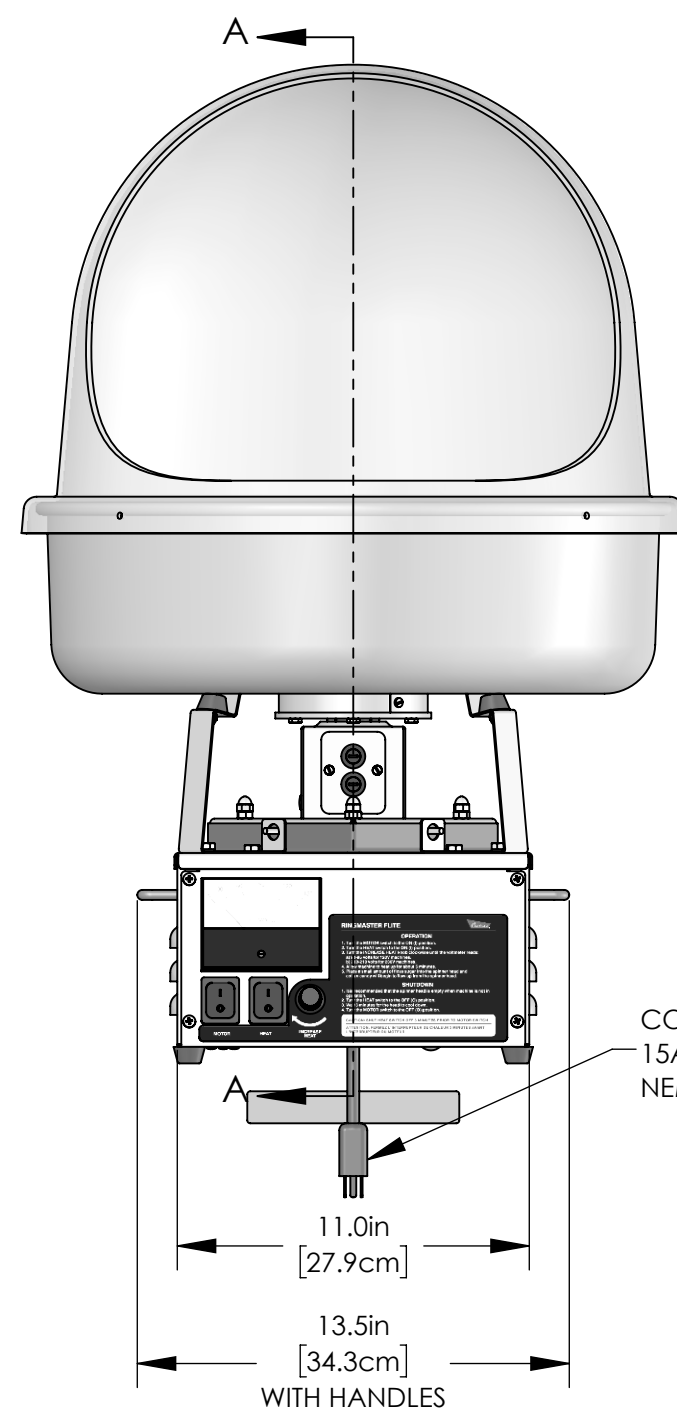
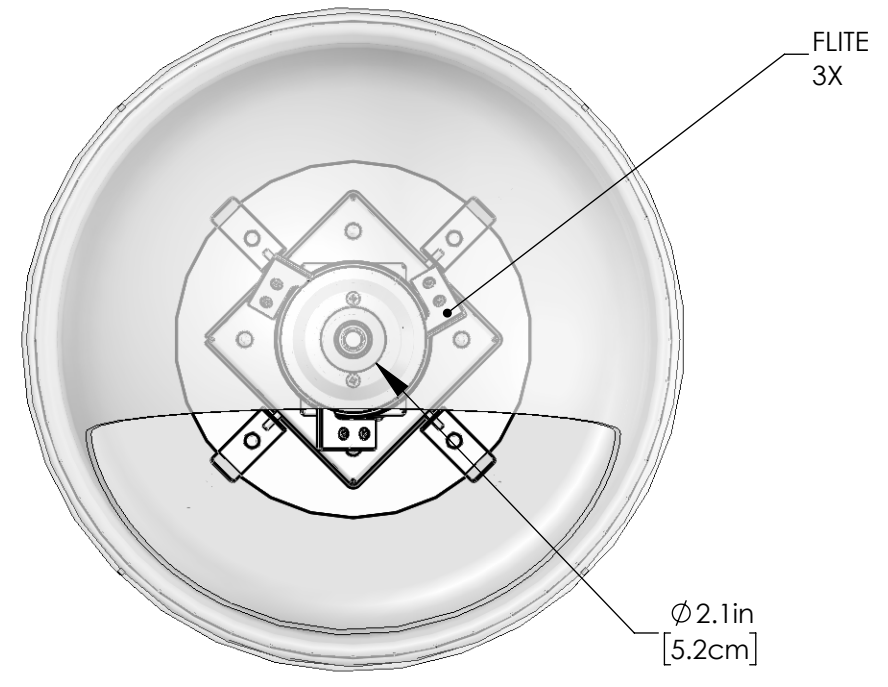
1. REMOVE SHARP EDGES AND BURRS.
2. UNLESS SPECIFIED ALL DIMENSIONS ARE IN INCHES.
3. REFERENCE DIMENSIONS ARE INDICATED IN PARENTHESIS.
4. CRITICAL DIMENSIONS THAT NEED INSPECTION ARE INDICATED IN OBOUNDED BOX.
5. T.S.C. STANDS FOR THEORITICAL SHARP CORNER & INS STANDS FOR INSIDE.
6. FOR SHEET METAL, UNLESS SPECIFIED ALL DIMENSIONS ARE OUTSIDE.
7. FOR SHEET METAL, FLAT PATTERNS ARE FOR REFERENCE ONLY.
8. MINOR SCRATCHES ARE ALLOWED ON OPPOSITE SIDE OF MILL FINISH & #4 FINISH.

<p>THIRD ANGLE PROJECTION</p>		<p>176 MITTEL DRIVE, WOOD DALE, IL 60191 www.cretors.com www.flo-thru.com</p>	
<p>TOLERANCES</p> <p>x.xx = ± 0.02 x.xxx = ± 0.01 ANGLES = ± 1° HOLES = +0.005 / -0 FINISH = 125Ra</p>		<p>DESCRIPTION</p> <p>HEAD ASSEMBLY, RINGMASTER FLITE, 120V</p>	
<p>B SIZE DRAWING</p>		<p>MATERIAL</p> <p>REFER INDIVIDUAL SUB-PARTS</p>	<p>APPROX. WEIGHT</p> <p>2.3 LBS</p>
<p>DRAWN BY</p> <p>ndarji</p>	<p>DRAWN DATE</p> <p>02/15/2019</p>	<p>DRAWING NUMBER</p> <p>20730-A</p>	<p>REVISION</p> <p>A</p>
<p>APPROVED BY</p> <p>nvidojevic</p>	<p>APPROVED DATE</p> <p>02/18/2019</p>	<p>THIS DRAWING CONTAINS INFORMATION PROPRIETARY TO C. CRETORS & CO. AND IS FURNISHED IN CONFIDENCE FOR SOLE PURPOSE OF SUPPLYING THE RECIPIENT WITH NEEDED ENGINEERING DATA. THE CONTENTS SHOULD NOT BE DISCLOSED OR REPRODUCED IN ANY MANNER WITHOUT WRITTEN CONSENT OF C. CRETORS & CO. ALL RIGHTS RESERVED.</p>	
		<p>SHEET</p> <p>2 OF 2</p>	

BILL OF MATERIALS			
ITEM #	QTY.	P/N	DESCRIPTION
1	1	21442	PEDESTAL, RINGMASTER FLITE
2	8	12465	FOOT, RUBBER, 0.984"DIA X 0.516"HIGH
3	16	7789	#8, INTERNAL TOOTH LOCKWASHER, STEEL NICKEL
4	4	7621	1/4", INTERNAL TOOTH LOCKWASHER, STEEL NICKEL
5	4	7790	#10, INTERNAL TOOTH LOCKWASHER, STEEL NICKEL
6	9	7788	#6, INTERNAL TOOTH LOCKWASHER, STEEL NICKEL
7	4	7637	#8-32 X 1/2"LG FULLY THD, PHIL TRUSS HEAD MACHINE SCREW, 18-8 S.S.
8	8	7642	#8-32 X 3/8"LG FULLY THD, PHIL TRUSS HEAD MACHINE SCREW, 18-8 S.S.
9	4	7268	#10-32 X 1/2"LG FULLY THD, PHIL TRUSS HEAD MACHINE SCREW, 18-8 S.S.
10	2	12044	HANDLE, #8-32x1.25"x3", BRIGHT CHROME
11	2	21449	STIFFENER, MOTOR, RMF
12	4	12428	VIBRATION MOUNT, RINGMASTER
13	4	7630	1/4-20 X 1/2"LG FULLY THD, HEX HEAD CAP SCREW, STEEL NICKEL
14	8	10121	1/4-20 X 1/2"LG FULLY THD, HEX HEAD CAP SCREW, 18-8 S.S.
15	1	7638	3/8-16 X 1"LG FULLY THD, HEX HEAD CAP SCREW, STEEL NICKEL
16	1	12430	MOTOR MOUNTING BASE, RINGMASTER
17	4	7640	1/4-20, HEX NUT, STEEL NICKEL
18	4	7639	1/4-20, ACORN NUT, STEEL NICKEL
19	4	7666	#6-32, ACORN NUT, STEEL NICKEL
20	1	21445	MOTOR, 24VDC, 2850 RPM, 140 WATTS
21	1	2121	BUSHING, HEYCO, #2053, 1/2"
22	1	10673	5/8", EXTERNAL RETAINING RING, STEEL PLAIN
23	1	12455	BRUSH HOLDER HOUSING, RINGMASTER
24	10	7653	#8-32, HEX MACHINE SCREW NUT, STEEL NICKEL
25	4	7688	#8-32, HEX MACHINE SCREW NUT, BRASS
26	4	21446	BOWL SUPPORT BRACKET, RMF
27	4	5743	1/4", MEDIUM SPLIT LOCKWASHER, 18-8 S.S.
28	2	10128	3/8", MEDIUM SPLIT LOCKWASHER, 18-8 S.S.
29	5	7273	1/4-20, NE NYLON INSERT LOCKNUT, 18-8 S.S.
30	4	7627	#6-32 X 1/2"LG, SLOT BINDER HEAD MACHINE SCREW, 18-8 S.S.
31	2	7772	#6-32 X 1/4"LG, SLOT BINDER HEAD MACHINE SCREW, 18-8 S.S.
32	7	7656	#6-32 X 3/8"LG, SLOT BINDER HEAD MACHINE SCREW, 18-8 S.S.
33	1	12454	HEAT SINK, RINGMASTER
34	1	3696	VOLTAGE CONTROL, DOMESTIC
35	1	10656	1/4-20 X 1-1/2"LG, CARRIAGE BOLT, 18-8 S.S.
36	1	21443	SWITCH PLATE, RINGMASTER FLITE, 120V
37	1	12427	BRUSH HOLDER PLATE, RINGMASTER
38	2	3639	BRUSH HOLDER & CAP & CLIP
39	2	3659	RETAINING RING, BRUSH HOLDER
40	2	3646	BRUSH & SPRING
41	1	3642	INSULATOR, BOTTOM, RINGMASTER
42	1	20738	SLIP RING, RINGMASTER, LONG STUD
43	1	3641	INSULATOR, CENTER, RINGMASTER
44	1	20739	SLIP RING, RINGMASTER, SHORT STUD
45	1	3766	INSULATOR TUBE, LONG
46	1	3767	INSULATOR TUBE, SHORT
47	1	22324	INSULATOR, TOP, RMF
48	1	20741	SPINNER HEAD BOTTOM, RINGMASTER FLITE
49	2	20755	SLEEVE, SILICONE, RINGMASTER
50	4	7686	#8, FLAT WASHER, BRASS
51	1	7780	5/16", USS FLAT WASHER, STEEL NICKEL
52	1	20742	SHAFT EXTENSION, RINGMASTER FLITE
53	1	20730-A	HEAD ASSEMBLY, RINGMASTER FLITE, 120V
54	2	20744	GUARD, ELEMENT TERMINALS, RMF
55	1	3725-1	POTENTIOMETER
56	1	2589	KNOB, TIMER ADJUSTMENT
57	1	2165	BUSHING, HEYCO, #1247, 7/8"
58	1	1254	CORD, 15AMP, 14-3, NEMA 5-15P
59	1	3920	DECAL, GROUND, YELLOW/BLACK
60	1	10208-A	VOLT METER, RINGMASTER, 120V

BILL OF MATERIALS			
ITEM #	QTY.	P/N	DESCRIPTION
61	1	1517	NAMEPLATE, SERIAL NO, BLANK
62	4	7756	1/8" RIVET, DOME HEAD, 0.063-0.125 GR, Q STYLE AL/AL
63	1	12494	CIRCUIT BREAKER, 3 AMP, RINGMASTER
64	1	2415	PLUG, 1/4" HOLE, STEEL, NICKEL PLATED
65	1	21444	DECAL, RINGMASTER FLITE
66	1	2446	DECAL, CAUTION 120V/60HZ
67	1	21447	BOWL, RINGMASTER FLITE, 19"
68	2	5130	SWITCH, LIGHTED, 230V
69	1	Skirt	
70	1	21770	POWER SUPPLY, 156W, 115V/230V
71	1	14594	DECAL, UL/CUL LISTED, CRETORS
72	1	22356	BUBBLE GUARD, RINGMASTER FLITE

REVISIONS			
REV	DC #	APPROVED BY	APPROVED ON
-	-	-	-
-	-	-	-
-	-	-	-



NOTES:
1. XXX.

STANDARD NOTES:
1. REMOVE SHARP EDGES AND BURRS.
2. UNLESS SPECIFIED ALL DIMENSIONS ARE IN INCHES.
3. REFERENCE DIMENSIONS ARE INDICATED IN PARENTHESIS.
4. CRITICAL DIMENSIONS THAT NEED INSPECTION ARE INDICATED IN OBOUND BOX.
5. T.S.C. STAND FOR THEORITICAL SHARP CORNER & INS STAND FOR INSIDE.
6. FOR SHEET METAL, UNLESS SPECIFIED ALL DIMENSIONS ARE OUTSIDE.
7. FOR SHEET METAL, FLAT PATTERNS ARE FOR REFERENCE ONLY.
8. MINOR SCRATCHES ARE ALLOWED ON OPPOSITE SIDE OF MILL FINISH & #4 FINISH.

THIRD ANGLE PROJECTION		176 MITTEL DRIVE, WOOD DALE, IL 60191 www.cretors.com www.ilo-llhu.com	
TOLERANCES x.xx = ± 0.02 x.xxx = ± 0.01 ANGLES = ± 1° HOLES = +0.005 / -0 FINISH = 125Ra		DESCRIPTION RINGMASTER FLITE, 120V/1PH/60Hz	
C SIZE DRAWING		MATERIAL REFER INDIVIDUAL SUB-PARTS	
DRAWN BY ndarji	DRAWN DATE 09/18/2018	APPROX WEIGHT 25.1 LBS	
APPROVED BY	APPROVED DATE	DRAWING NUMBER RMFA-X	
THIS DRAWING CONTAINS INFORMATION PROPRIETARY TO C. CRETORS & CO. AND IS FURNISHED IN CONFIDENCE FOR SOLE PURPOSE OF SUPPLYING THE RECIPIENT WITH NEEDED ENGINEERING DATA. THE CONTENTS SHOULD NOT BE DISCLOSED OR REPRODUCED IN ANY MANNER WITHOUT WRITTEN CONSENT OF C. CRETORS & CO. ALL RIGHTS RESERVED.			SHEET 1 OF 1