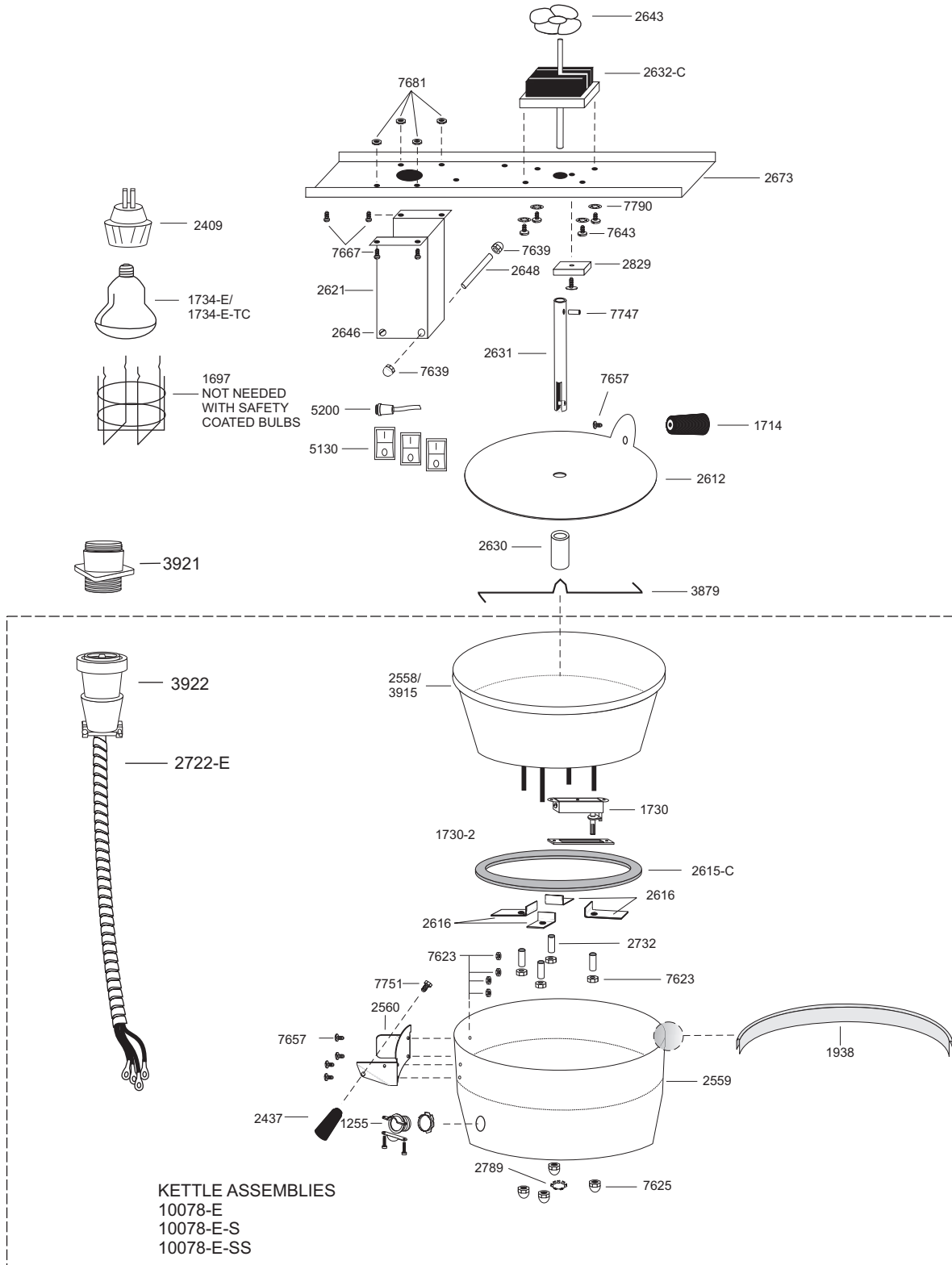
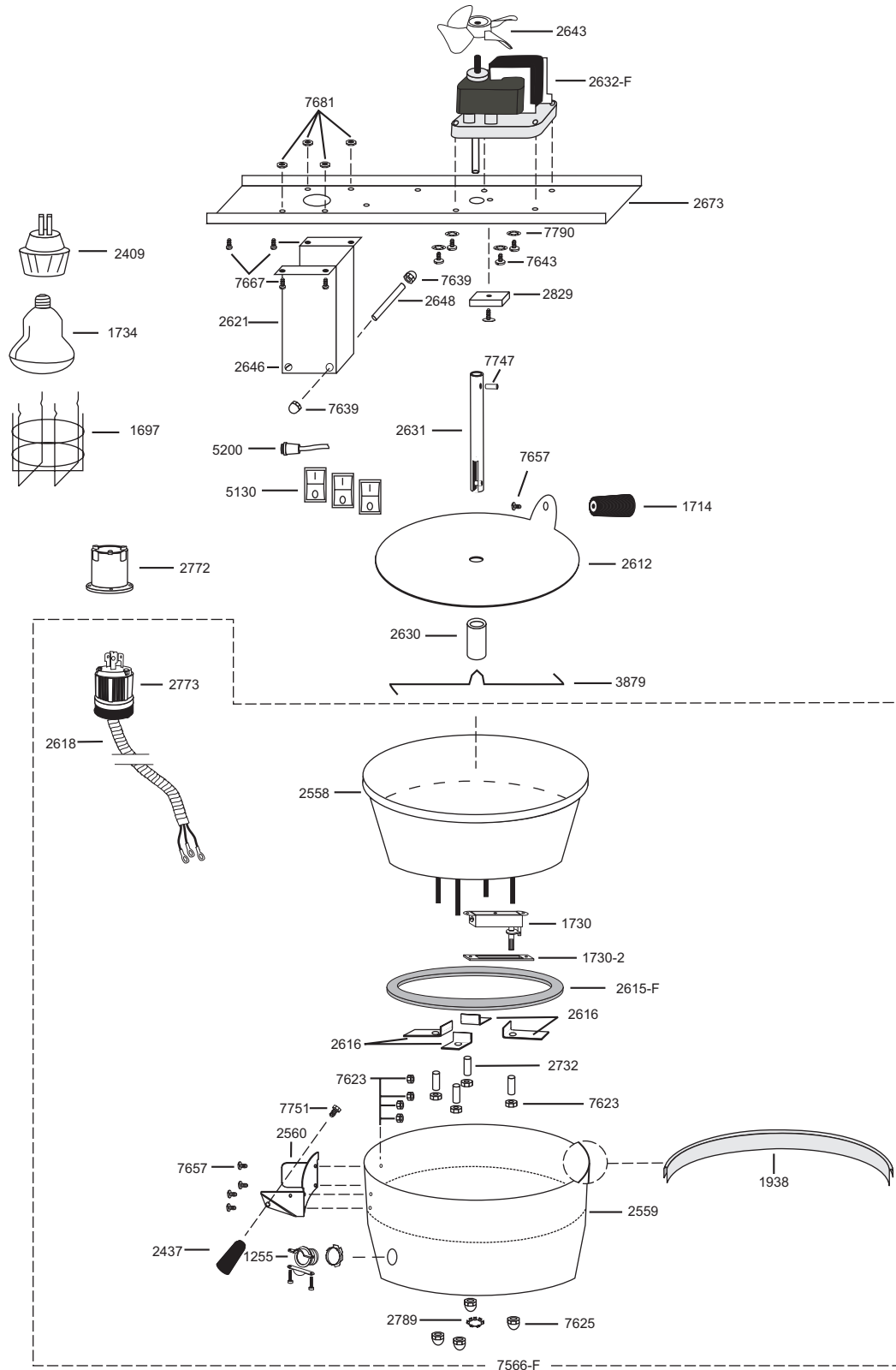


1100 KNOB
2600 HANDLE BAR
2601-3 ANTIQUE T-2000 BASE SHELF
2602 ANTIQUE WAGON AXLE
2603 ANTIQUE WAGON LEG
2604 ANTIQUE WAGON WHEEL
2606 ANTIQUE WAGON DECAL
2639 ANTIQUE T-2000 "POPCORN" DECAL
2669 SIGN - ANTIQUE T-2000 TOP
2672-AN RED ANTIQUE TOP
2828 TOP TRIM - ANTIQUE T-2000 (YELLOW)

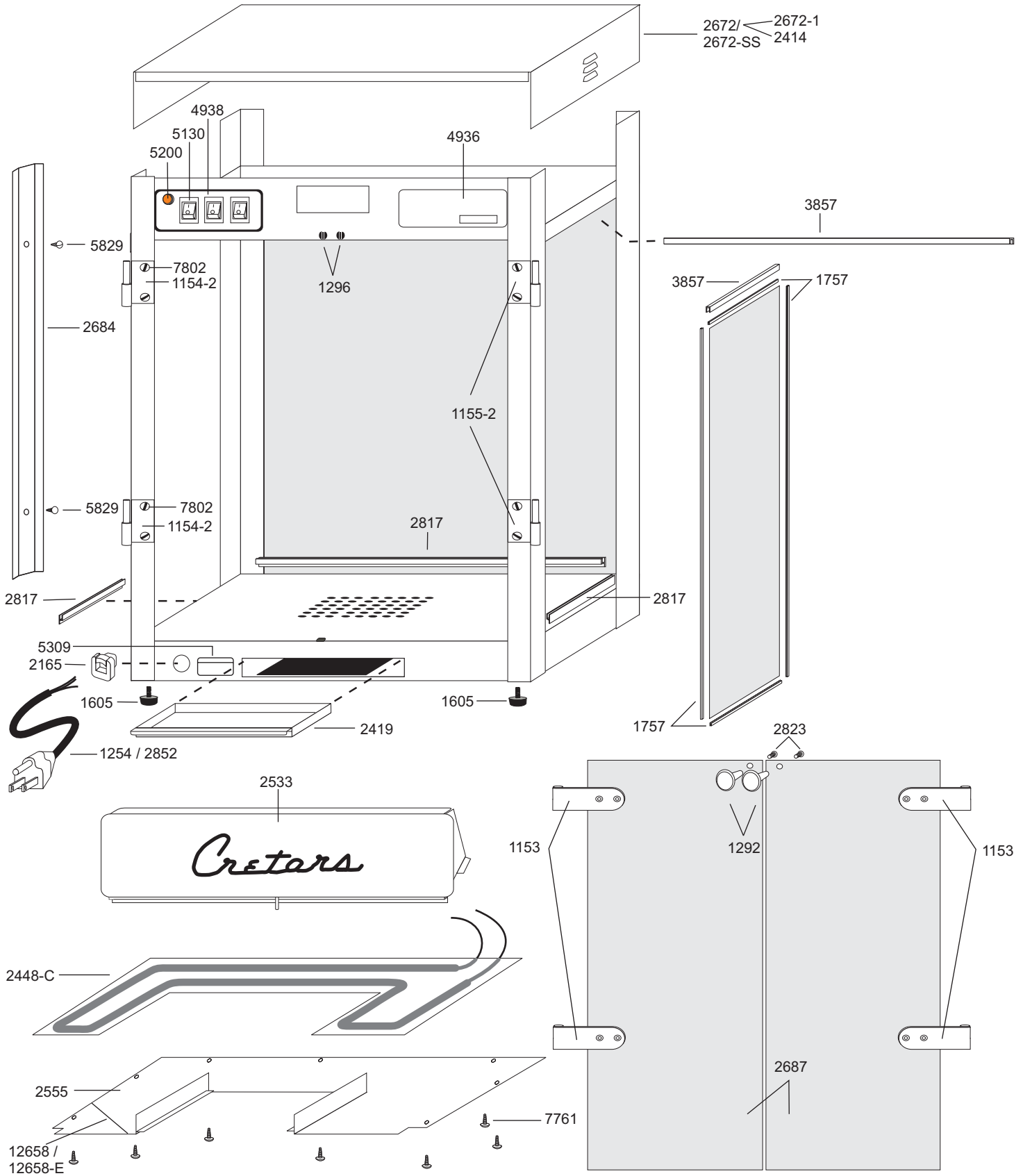


1255	3/8" CONNECTOR	3915	PAN - SUGAR
1697	WIRE LAMP GUARD	3921	RECEPTACLE ASSEMBLY TUV 230V
1714	KNOB	3922	PLUG
1730	THERMOSTAT	5130	SWITCH - LIGHTED
1730-2	THERMOSTAT RETAINER	5200	INDICATOR LIGHT
1734-E-TC	250 WATT HEAT LAMP, 230V SAFETY COATED	7623	10-32 HEX NUT
1938	RETAINER GASKET-SOLD PER FT	7625	10-32 HIGH CROWN CAP NUT
2409	SNAP IN PORCELAIN SOCKET	7639	1/4"-20 CAP NUT
2437	DUMP LEVER KNOB	7643	10-32 x 1/2" BINDING HEAD
2558	POPPER PAN - ROLLED LIP	10078-E	COMPLETE KETTLE ASSY 230V
2559	RETAINER - ROLLED LIP	10078-E-S	COMPLETE KETTLE ASSY-SUGAR PAN
2560	HINGE BRACKET	10078-E-SS	COMPLETE STAINLESS STEEL ASSY- SUGAR PAN
2612	KETTLE COVER	7657	10-32 x 3/8 BINDING HEAD
2615-C	1000 WATT, 230V ELEMENT	7667	12-24 x 1/2 FILLISTER HEAD
2616	ELEMENT CLAMP - SET	7681	12-24 STOP NUT
2621	POPPER SUPPORT HANGER	7747	10-32 x 1/8 SET SCREW - SLOTTED
2630	STIRRER SHAFT WEIGHT	7751	3/8-16 x 1/2 HEX BOLT
2631	STIRRER SHAFT W/ SET SCREW	7790	#10 STAR LOCKWASHER
2632-E	MOTOR - 230 VOLT		
2643	MOTOR FAN		
2646	POPPER LEVEL SCREW		
2648	HINGE PIN		
2673	STIFFENER		
2722-E	KETTLE WIRE W/ CONDUIT		
2732	SPACER - KETTLE		
2789	7/8" HOLE COVER		
2829	MAGNET W/ SCREW		
3879	STIRRER BLADE-HOOKED		



1255	3/8" CONNECTOR	5130	SWITCH - LIGHTED
1697	WIRE LAMP GUARD	5200	INDICATOR LIGHT
1714	KNOB	7623	10-32 HEX NUT
1730	THERMOSTAT	7625	10-32 HIGH CROWN CAP NUT
1730-2	THERMOSTAT RETAINER	7639	1/4"-20 CAP NUT
1734	250 WATT HEAT LAMP, 100V	7643	10-32 x 1/2" BINDING HEAD
1938	RETAINER GASKET-SOLD PER FT	7566-F	COMPLETE KETTLE ASSY 120V
2409	SNAP IN PORCELAIN SOCKET	7657	10-32 x 3/8 BINDING HEAD
2437	DUMP LEVER KNOB	7667	12-24 x 1/2 FILLISTER HEAD
2558	POPPER PAN - ROLLED LIP	7681	12-24 STOP NUT
2559	RETAINER - ROLLED LIP	7747	10-32 x 1/8 SET SCREW - SLOTTED
2560	HINGE BRACKET	7751	3/8-16 x 1/2 HEX BOLT
2612	KETTLE COVER	7790	#10 STAR LOCKWASHER
2615-F	1000 WATT, 100V ELEMENT		
2616	ELEMENT CLAMP - SET		
2618	KETTLE WIRE SET		
2621	POPPER SUPPORT HANGER		
2630	STIRRER SHAFT WEIGHT		
2631	STIRRER SHAFT W/ SET SCREW		
2632-F	MOTOR - 100 VOLT		
2643	MOTOR FAN		
2646	POPPER LEVEL SCREW		
2648	HINGE PIN		
2673	STIFFENER		
2732	SPACER - KETTLE		
2772	RECEPTACLE		
2773	PLUG		
2789	7/8" HOLE COVER		
2829	MAGNET W/ SCREW		
3879	STIRRER BLADE-HOOKED		

1714	KNOB	2772	RECEPTACLE
1734-TC	250 WATT HEAT LAMP, 120V	2773	PLUG
1938	RETAINER GASKET-SOLD PER FT	2789	7/8" HOLE COVER
2409	SNAP IN PORCELAIN SOCKET	2829	MAGNET W/ SCREW
2405	THERMOSTAT - SALT	3879	STIRRER BLADE-HOOKED
2405-S	THERMOSTAT - SUGAR	3915	PAN - SUGAR
2437	DUMP LEVER KNOB	5130	SWITCH - LIGHTED
2558	POPPER PAN - ROLLED LIP	5200	INDICATOR LIGHT
2559	RETAINER - ROLLED LIP	7623	10-32 HEX NUT
2560	HINGE BRACKET	7625	10-32 HIGH CROWN CAP NUT
2612	KETTLE COVER	7639	1/4"-20 CAP NUT
2615-A	1000 WATT, 120V ELEMENT	7643	10-32 x 1/2" BINDING HEAD
2616	ELEMENT CLAMP - SET	7566-A	COMPLETE KETTLE ASSY 120V
2618	KETTLE WIRE SET	7566-A-S	COMPLETE KETTLE ASSY-SUGAR PAN
2621	POPPER SUPPORT HANGER	7566-A-SS	COMPLETE STAINLESS KETTLE ASSY
2630	STIRRER SHAFT WEIGHT	7657	10-32 x 3/8 BINDING HEAD
2631	STIRRER SHAFT W/ SET SCREW	7667	12-24 x 1/2 FILLISTER HEAD
2632-A	MOTOR - 120 VOLT	7681	12-24 STOP NUT
2643	MOTOR FAN	7747	10-32 x 1/8 SET SCREW - SLOTTED
2646	POPPER LEVEL SCREW	7751	3/8-16 x 1/2 HEX BOLT
2648	HINGE PIN	7790	#10 STAR LOCKWASHER
2673	STIFFENER	12337	3/8" CONNECTOR (NON ROTATING)
2732	SPACER - KETTLE	14593	HIGH LIMIT



T-2000 WARMER -100/120/230 VOLT
BEGINNING SERIAL No. 01110000

DOC: T2300006

T2W-A/E/F-3.1-A
11/01

1153	DOOR STRAP ONLY	5829	#6 x 1/2" SHEET METAL SCREW
1154	DOOR HINGE & STRAP - LEFT	7761	#6 1/4 SLTD TYPE A -N.P.
1154-2	DOOR HINGE-ONLY - LEFT	7802	10-24 x 1/4 B.H. W/ NYLOCK
1155	DOOR HINGE & STRAP - RIGHT	12658	STRAIN RELIEF BRACKET
1155-2	DOOR HINGE-ONLY - RIGHT	12658-E	STRAIN RELIEF BRACKET - EXPORT
1254	POWER SUPPLY CORD		
1292	CONCAVE (KNOB) W/ SCREW		
1296	ROUND MAGNETIC CATCH		
1605	RUBBER FOOT W/ HARDWARE		
1757	GLASS CHANNEL (SOLD PER FOOT)		
2165	CORD STRAIN RELIEF		
2414	"POPCORN" DECAL (NOT SHOWN)		
2419	CLEAN OUT DRAWER		
2448-A	HEAT PAD - 120V		
2448-C	HEAT PAD - 230V		
2533	DROP SHELF		
2555	HEAT PAD COVER		
2672	RED VINYL TOP W/ DECAL - T-2000		
2672-SS	STAINLESS STEEL TOP - T-2000		
2672-1	RED VINYL TOP ONLY		
2684	INSIDE CORNER		
2687	PLEXIGLASS DOOR (9-7/16 x 18-9/16 ACRYLIC .187)		
2817	GLASS CHANNEL-SS - 17-7/8		
2823	DOOR KNOB SCREW		
2852	CORD 10A - 1EC		
3857	GLASS CHANNEL-SS - 20-3/8		
4938	SWITCH PLATE DECAL		
4936	INSTRUCTION DECAL		
5130	SWITCH - LIGHTED		
5200	INDICATOR LIGHT		
5309	NAMEPLATE SERIAL NO.		