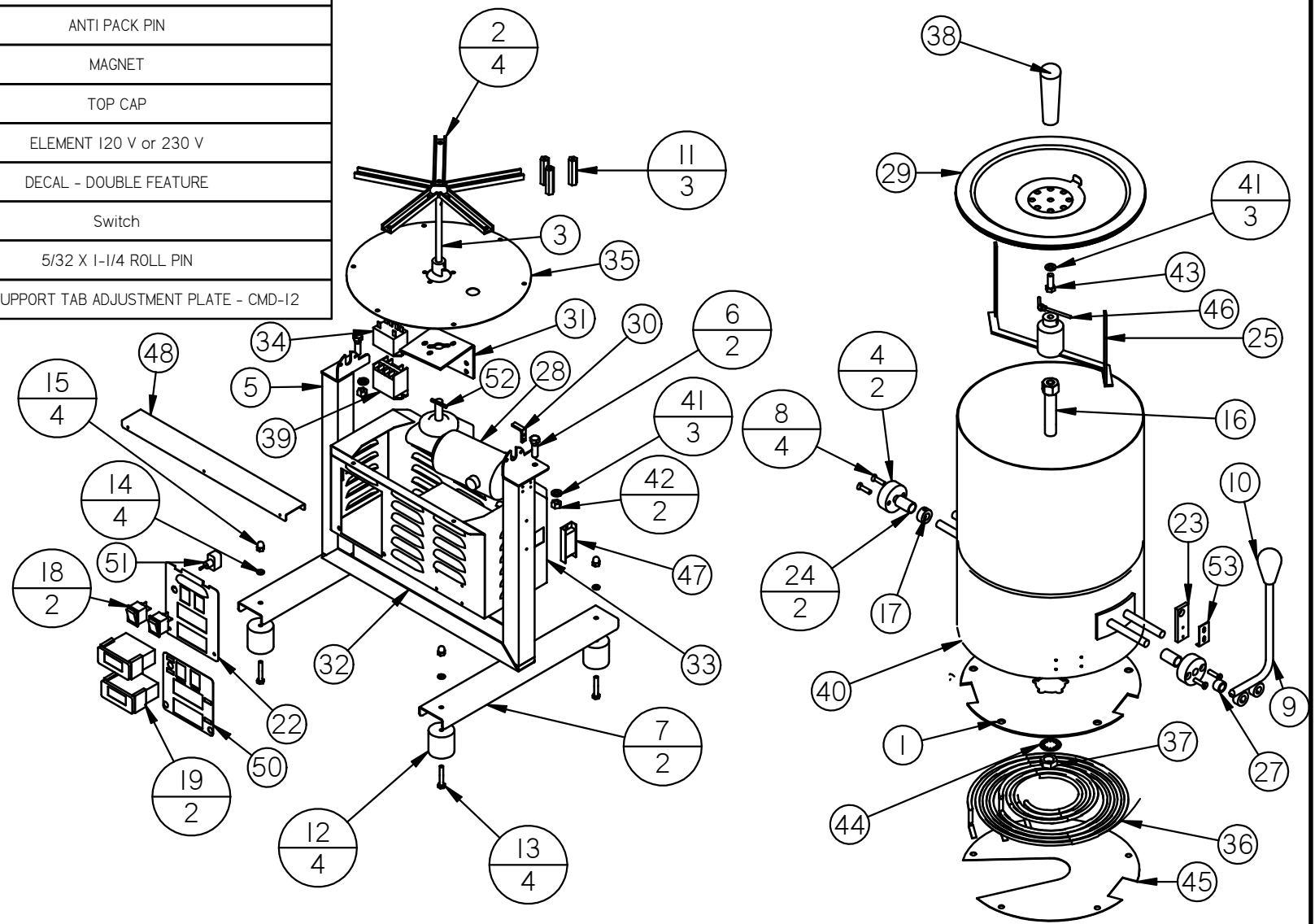
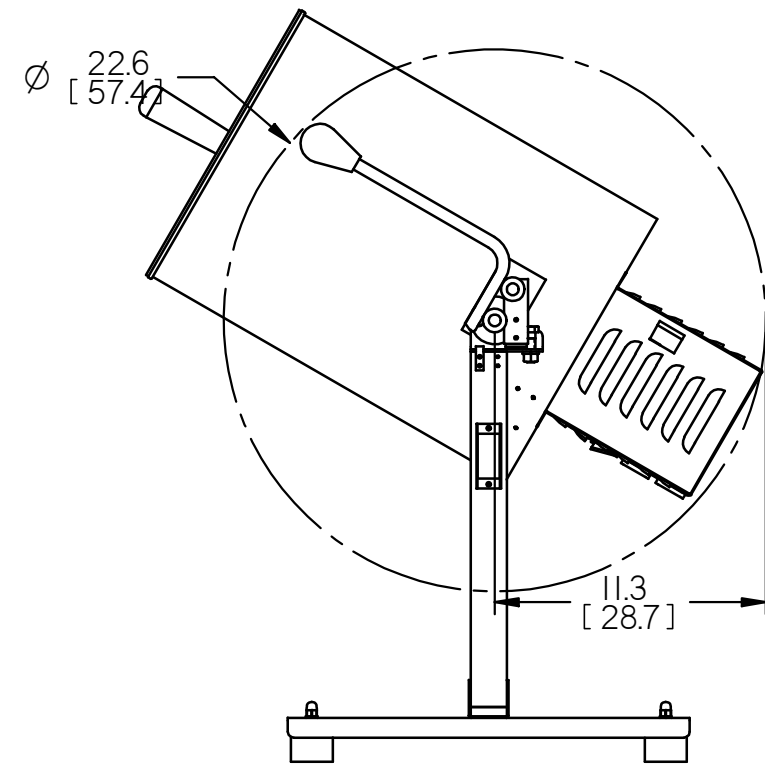
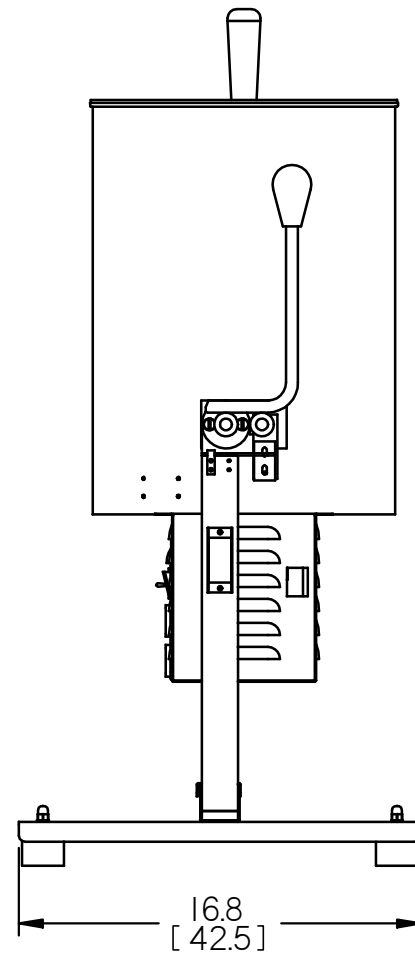
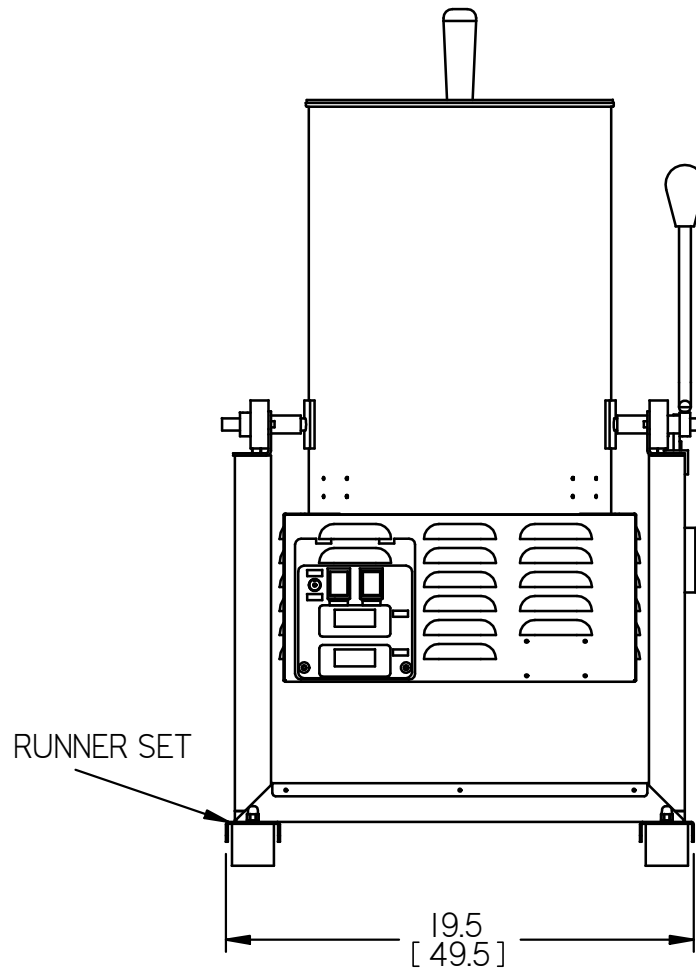
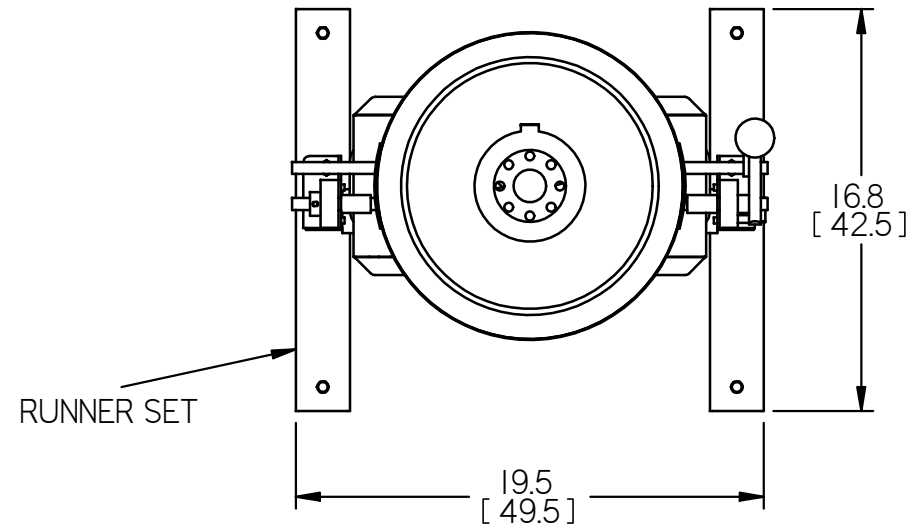


Item Number	Document Number	Title	Item Number	Document Number	Title
1	19237	DIFFUSER PLATE	35	19239	BOTTOM COVER
2	7259	ELEMENT CLAMP 5-1/4"	36	19251-A or E	ELEMENT 120 V or 230 V
3	1135	CLUTCH DOG & SHAFT	37	12028	3/4-16 LOCKNUT-CENTER STUD
4	19242	BEARING - CMD12	38	2437	DUMP LEVER KNOB
5	19244	SHELF MOUNT SET - POPPER / CARAMELIZER	39	12148	RELAY DPST 240V CLASS B
6	5737	3/8-16 x 1-1/4	40	19236	CARAMELIZER PAN- CMD12
7	19112	RUNNER-TABLE MOUNT-POPPI	41	10128	3/8" MED. SPLT L/W, T304 GR 5
8	19243	1/4-20 x 2" FLAT HEAD-S.S.	42	10976	3/8-16 SS HEX NUT
9	19246	DUMP HANDLE - CMD12	43	10133	3/8-16 X 1" HEX BOLT. T304SS GR5
10	1100	KNOB	44	1560	LOCK WASHER
11	19238	STAND OFF	45	19322	DOUBLE FEATURE - BAFFLE PLATE
12	19139	RUBBER FOOT	46	1308-S	ANTI PACK PIN
13	13006	1/4-20 X 1-1/2 18-8 HEX HEAD	47	4732	MAGNET
14	5743	1/4" MED. SPLT L/W, SS	48	19427	TOP CAP
15	18580	1/4-20 HIGH CROWN NUT	49	19250-A or E	ELEMENT 120 V or 230 V
16	12027	PAN CENTER - IPC G32E/G48E	50	19438	DECAL - DOUBLE FEATURE
17	1259-SS-1	COLLAR SS-SHAFT-1/2" W/SET SCREW	51	12553	Switch
18	5130	SWITCH-LIGHTED-230V	52	7741	5/32 X 1-1/4 ROLL PIN
19	14585 or 14585-E	DIGITAL CONTROLLER-120V.	53	19435	KETTLE SUPPORT TAB ADJUSTMENT PLATE - CMD-12
20	7621	1/4" INTERNAL TOOTH LOCKWASHER			
21	7640	1/4-20 HEX NUT			
22	19254	SWITCH PLATE - CMD12			
23	19279	KETTLE SUPPORT TAB - CMD-12			
24	19252	SPACING COLLAR - CMD12			
25	19363	STIRRER BLADE ASSY - CMD12			
26	16926	POWER SUPPLY			
27	19255	SPACING COLLAR SMALL - CMD12			
28	19241	MOTOR - DC 24 VOLT			
29	19249	DOUBLE FEATURE COVER / VENT			
30	19256	DUMP STOP - CMD12			
31	19240	MOTOR BRACKET			
32	19245	BOTTOM SUPPORT STIFFENER - CMD12			
33	19188	MOTOR HOUSING			
34	12497	RELAY POWER 120V			



				C. CRETORS & COMPANY 170 MITTEL DRIVE, WOOD DALE, ILLINOIS 60191 TEL: 847/616-6900 FAX: 847/616-6970		TOLERANCES X.XX = ±0.020 X.XXX = ±0.005 FRACT. = ±1/64 125 SURFACE FINISH L ±.5° ALL HOLES +.005 -.000		NAME: DOUBLE FEATURE KETTLE ASSEMBLY DRAWN BY: bud DATE:		MATERIAL:	
B	ADDED NEW COMPONENTS	bud	03/10/15	This drawing contains information proprietary to C. Cretors & Co. and is furnished in confidence for the sole purposes of supplying the recipient with needed engineering data. Its contents should not be disclosed or reproduced in any manner without the written consent of C. Cretors & Co. All Rights Reserved.				CHK'D:	DATE:	SCALE:	DWG. No.
A	RELEASED FOR MANUFACTURE	bud	12/12/13					APPROVED	DATE:	REV: A	Double Feature
REV.	DESCRIPTION OF REVISION	BY	DATE								



			C. CRETORS & COMPANY 170 MITTEL DRIVE, WOOD DALE, ILLINOIS 60191 TEL: 847/616-6900 FAX: 847/616-6970		TOLERANCES X.XX = ±0.020 X.XXX = ±0.005 FRACT. = ±1/64 125 SURFACE FINISH ∠ ±5° ALL HOLES +.005 -.000		NAME: DOUBLE FEATURE KETTLE ASSEMBLY					
			This drawing contains information proprietary to C. Cretors & Co. and is furnished in confidence for the sole purposes of supplying the recipient with needed engineering data. Its contents should not be disclosed or reproduced in any manner without the written consent of C. Cretors & Co. All Rights Reserved.		DRAWN BY: bud		MATERIAL:					
					DATE		CHK'D:		DATE:		SCALE:	DWG. No.
B ADDED NEW COMPONENTS A RELEASED FOR MANUFACTURE					bud03/10/15 bud12/12/13		APPROVED		DATE:		REV: A	
REV.	DESCRIPTION OF REVISION		BY	DATE					Double Feature			