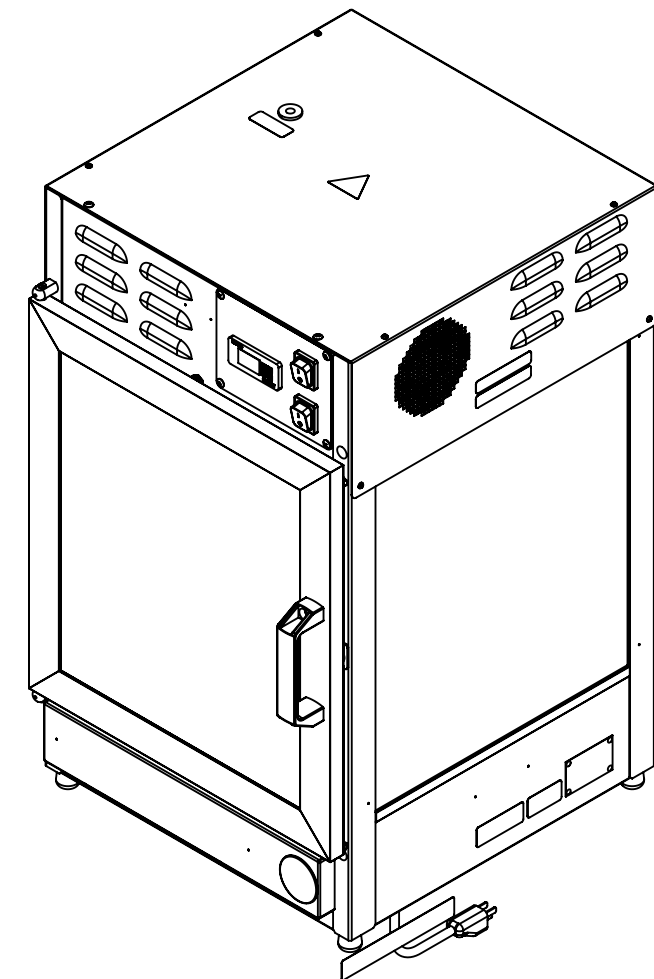
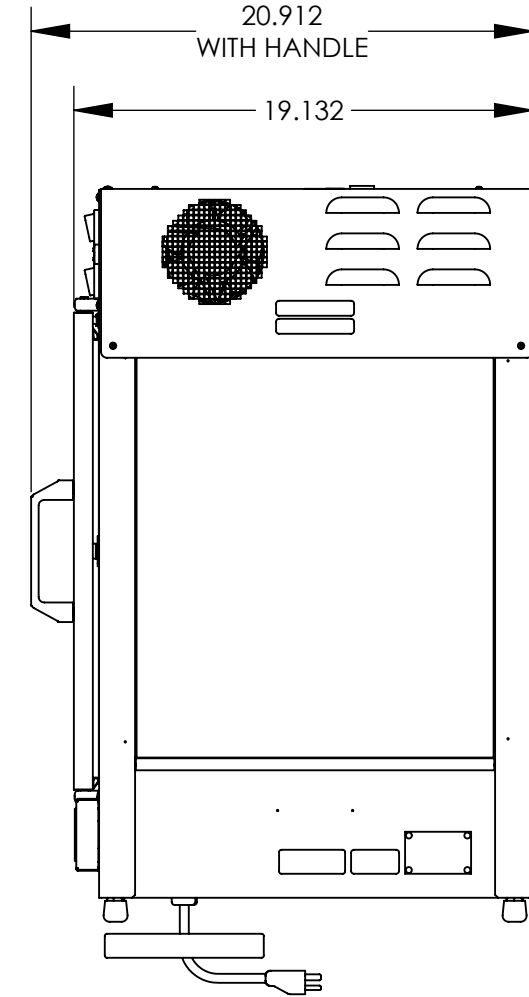
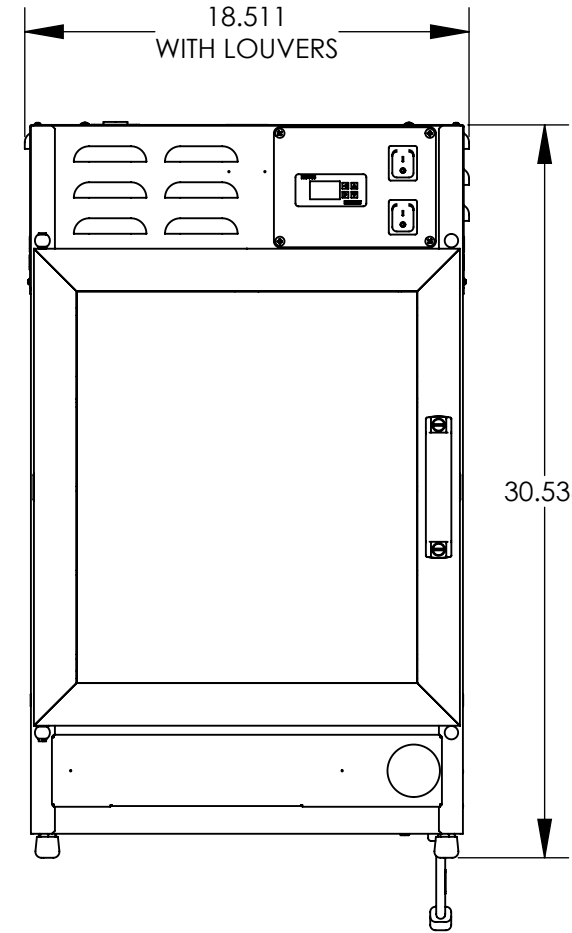
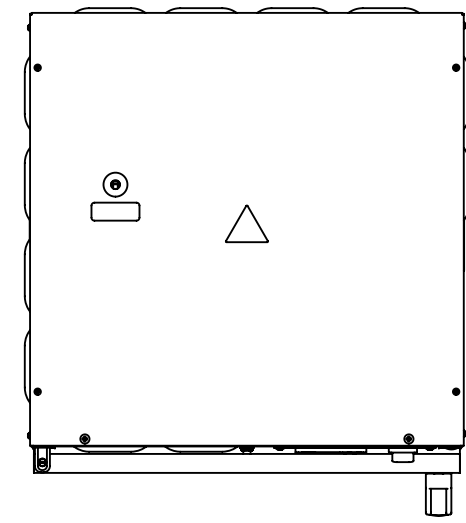


BILL OF MATERIALS			
ITEM #	Default/ QTY	P/N	DESCRIPTION
1	1	22060	FRAME, #4 FINISH, HUMIDIFIED FOOD WARMER
2	4	7290	1/4-20 X 7/8"LG. SOCKET SET SCREW, CUP POINT, STEEL PLAIN
3	4	1433	RUBBER TIPS
4	4	5777	LEG, WARMER
5	1	21865	GASKET, FRONT CEILING, PIZZA WARMER
6	1	21575	DOOR ASSEMBLY, PIZZA WARMER, CONVECTION
7	2	19212	DOOR HINGE, PIZZA WARMER
8	2	19213	DOOR HINGE, SCREW, PIZZA WARMER
9	6	5742	1/4", SAE FLAT WASHER, 18-8 S.S.
10	2	7273	1/4-20, NE NYLON INSERT LOCKNUT, 18-8 S.S.
11	1	19355	WASHER, #8, NYLON, OFF WHITE
12	2	10514	RIVET, PUSH-IN, HOLE DIA 1/4"
13	1	16068-TH	MOTOR, 120V, W/ TAPPED HOLE
14	14	7790	#10, INTERNAL TOOTH LOCKWASHER, STEEL NICKEL
15	4	16929	#10-32 X 1"LG FULLY THD, PHIL TRUSS HEAD MACHINE SCREW, 18-8 S.S.
16	1	22028	AIR DUCT, TOP, PIZZA WARMER
17	24	7789	#8, INTERNAL TOOTH LOCKWASHER, STEEL NICKEL
18	22	7641	#8-32 X 1/4"LG FULLY THD, PHIL TRUSS HEAD MACHINE SCREW, 18-8 S.S.
19	1	1460	BLOWER, 1/125HP, 3030RPM, 115V/50/60HZ
20	2	7865	#10-32, NM NYLON INSERT LOCKNUT, STEEL ZINC
21	2	2409	SOCKET, SNAP-IN, PORCELAIN
22	2	2047	HEAT ELEMENT, 500W, 120V, 28.8 OHMS
23	1	22029	COVER, HEAT ELEMENT ACCESS, PIZZA WARMER
24	1	5601	HIGH LIMIT, 200 DEG
25	2	7675	0.1875 ID X 0.437 OD X 0.30 THK, FLAT WASHER, 18-8 S.S.
26	2	4708	SPACER, #10 X 3/8, STEEL
27	7	7637	#8-32 X 1/2"LG FULLY THD, PHIL TRUSS HEAD MACHINE SCREW, 18-8 S.S.
28	1	22033	SWITCHPLATE, PIZZA WARMER, 2 SWITCHES
29	1	22014	DECAL, PIZZA WARMER, STANDARD CONVECTION
30	1	21034	CONTROLLER, TEMPERATURE AND HUMIDITY
31	2	5130	SWITCH, LIGHTED, 230V
32	1	14585	TEMPERATURE CONTROLLER, DIGITAL, 120V
33	1	10662	SWITCH, PUSH BUTTON, 16A 125/250VAC
34	1	19482	TIMER, CROUZET, 100-230V
35	1	21046	PUSH-BUTTON, RED, EXTENDED, ILLUMINATED
36	1	22030	BRACKET, EXHAUST BLOWER, PIZZA WARMER
37	1	1274-2	BLOWER, AXIAL, 120V
38	4	7268	#10-32 X 1/2"LG FULLY THD, PHIL TRUSS HEAD MACHINE SCREW, 18-8 S.S.
39	2	21304	LED STRIP, 16"LG, W/LEADS & POWER SUPPLY
40	3	2123	BUSHING, HEYCO #2030, 1/4"
41	1	16803	COMPRESSION FITTING, THERMOCOUPLE
42	1	5738	3/8", SAE FLAT WASHER, 18-8 S.S.
43	1	16802	THERMOCOUPLE, 1/8" X 4.5"LG X 28" LEADS
44	1	2165	BUSHING, HEYCO, #1247, 7/8"
45	1	1254	CORD, 15AMP, 14-3, NEMA 5-15P
46	3	21584	GLASS, PIZZA WARMER, NARROW
47	6	21307	CHANNEL, GLASS, 17.0625"LG
48	6	21586	CHANNEL, GLASS, 15.375"LG
49	3	21585	EXTRUSION, GLASS CHANNEL, 14.9375"
50	1	21044	BRACKET, SENSOR, PIZZA WARMER
51	14	7642	#8-32 X 3/8"LG FULLY THD, PHIL TRUSS HEAD MACHINE SCREW, 18-8 S.S.
52	1	21035	SENSOR, HUMIDITY AND TEMPERATURE
53	2	2181	CABLE TIE
54	4	14979	#8-32, U-NUT
55	2	21289	INSIDE CORNER, REAR, PIZZA WARMER
56	2	21602	DEFLECTOR, PIZZA WARMER, CONVECTION
57	4	7687	#8-32 X 3/4"LG FULLY THD, SLOT ROUND HEAD MACHINE SCREW, BRASS
58	1	21571	HEAT PAD & STIFFENER ASSY, PIZZA WARMER
59	1	14604	THERMOCOUPLE, RING TYPE
60	1	5505	#8-32, SERRATED HEX FLANGE NUT, STEEL ZINC
61	2	21819	CLAMP BRACKET, HEAT PAD, PIZZA WARMER
62	1	21587	STIFFENER, BOTTOM, PIZZA WARMER
63	1	16996-A	BLOWER, AXIAL, 120V
64	1	12999	GUARD, FAN, 120 MM
65	1	21599	BRACKET, WATER TRAY BLOWER MOUNT
66	4	14615	#10-32 X 1/2"LG PHIL PAN HEAD T.C.S. TYPE "F" 18-8 S.S.
67	1	22222	TUBE, WIRE ROUTING, HFV
68	1	2130	ROUTING CLAMP, PIPE, 3/8"
69	1	7627	#6-32 X 1/2"LG, SLOT BINDER HEAD MACHINE SCREW, 18-8 S.S.
70	1	7788	#6, INTERNAL TOOTH LOCKWASHER, STEEL NICKEL
71	1	7613	#6-32, HEX MACHINE SCREW NUT, STEEL NICKEL
72	1	21303	COVER, RESET TIMER GUARD
73	10	7803	#6-32 X 3/8"LG PHIL PAN HEAD T.C.S. TYPE "I" STEEL NICKEL
74	2	2120	BUSHING, HEYCO #2126, 7/8"
75	1	21588	POPPER CASE, PIZZA WARMER, CONVECTION
76	1	21589	BEARING, RACK, PIZZA WARMER
77	1	1472	SPRING STRIRRR, BLADE RETAINING
78	1	21814	ADAPTER, SCREW INSTALL, PIZZA WARMER
79	1	7773	#8-32 X 5/8"LG FULLY THD, SLOT TRUSS HEAD MACHINE SCREW, 18-8 S.S.
80	1	21454	RACK, 15" W/ HOOKS, PIZZA WARMER
81	1	22084	DRAWER, WATER, #4 FINISH, PIZZA WARMER
82	1	21855	PLUG, CLEAR, RESET SWITCH, PIZZA WARMER
83	1	21607	SPLASH GUARD, PIZZA WARMER
84	1	22085	TOP COVER ASSY, PIZZA WARMER, #4 FINISH
85	1	2446	DECAL, CAUTION 120V/60HZ

BILL OF MATERIALS			
ITEM #	Default/ QTY	P/N	DESCRIPTION
86	4	6018	DECAL, CAUTION CONSIDER ALL SURFACES HOT
87	1	21858	DECAL, MAX WATER FILL, PIZZA WARMER
88	3	21670	DECAL, CAUTION ALL SURFACES HOT, FRENCH
89	1	14594	DECAL, UL/CUL LISTED, CRETORS
90	1	12863	DECAL, EPH/UL SANITATION MARK
91	1	1517	NAMEPLATE, SERIAL NO, BLANK
92	4	7756	1/8" RIVET, DOME HEAD, 0.063-0.125 GR, Q STYLE AL/AL

REVISIONS			
REV	DC #	APPROVED BY	APPROVED ON
-	-	-	-
-	-	-	-
-	-	-	-



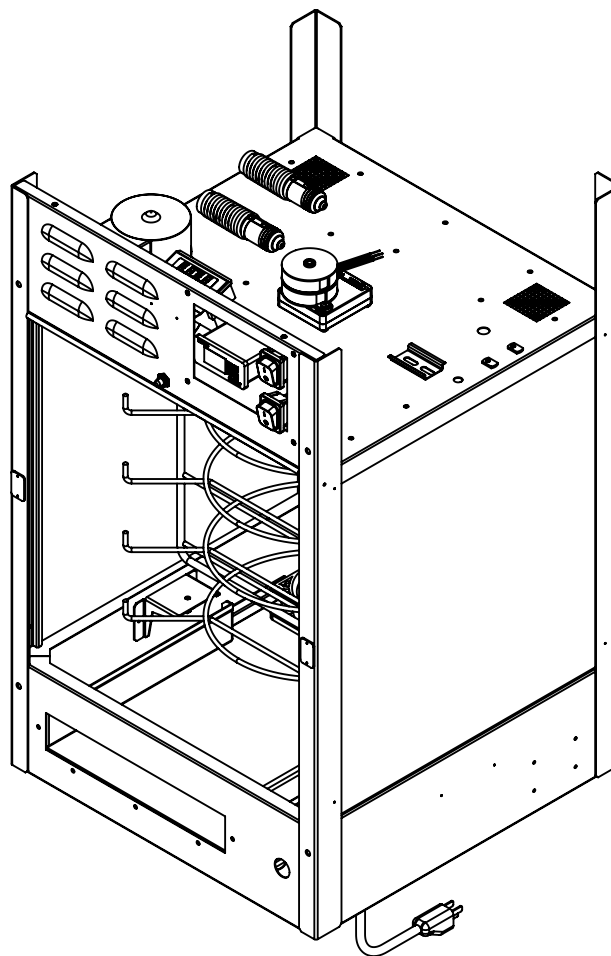
**NOTES:**  
1. XXX.


**STANDARD NOTES:**  
1. REMOVE SHARP EDGES AND BURRS.  
2. UNLESS SPECIFIED ALL DIMENSIONS ARE IN INCHES.  
3. REFERENCE DIMENSIONS ARE INDICATED IN PARENTHESIS.  
4. CRITICAL DIMENSIONS THAT NEED INSPECTION ARE INDICATED IN OBOUND BOX.  
5. T.S.C. STAND FOR THEORITICAL SHARP CORNER & INS STAND FOR INSIDE.  
6. FOR SHEET METAL, UNLESS SPECIFIED ALL DIMENSIONS ARE OUTSIDE.  
7. FOR SHEET METAL, FLAT PATTERNS ARE FOR REFERENCE ONLY.  
8. MINOR SCRATCHES ARE ALLOWED ON OPPOSITE SIDE OF MILL FINISH & #4 FINISH.

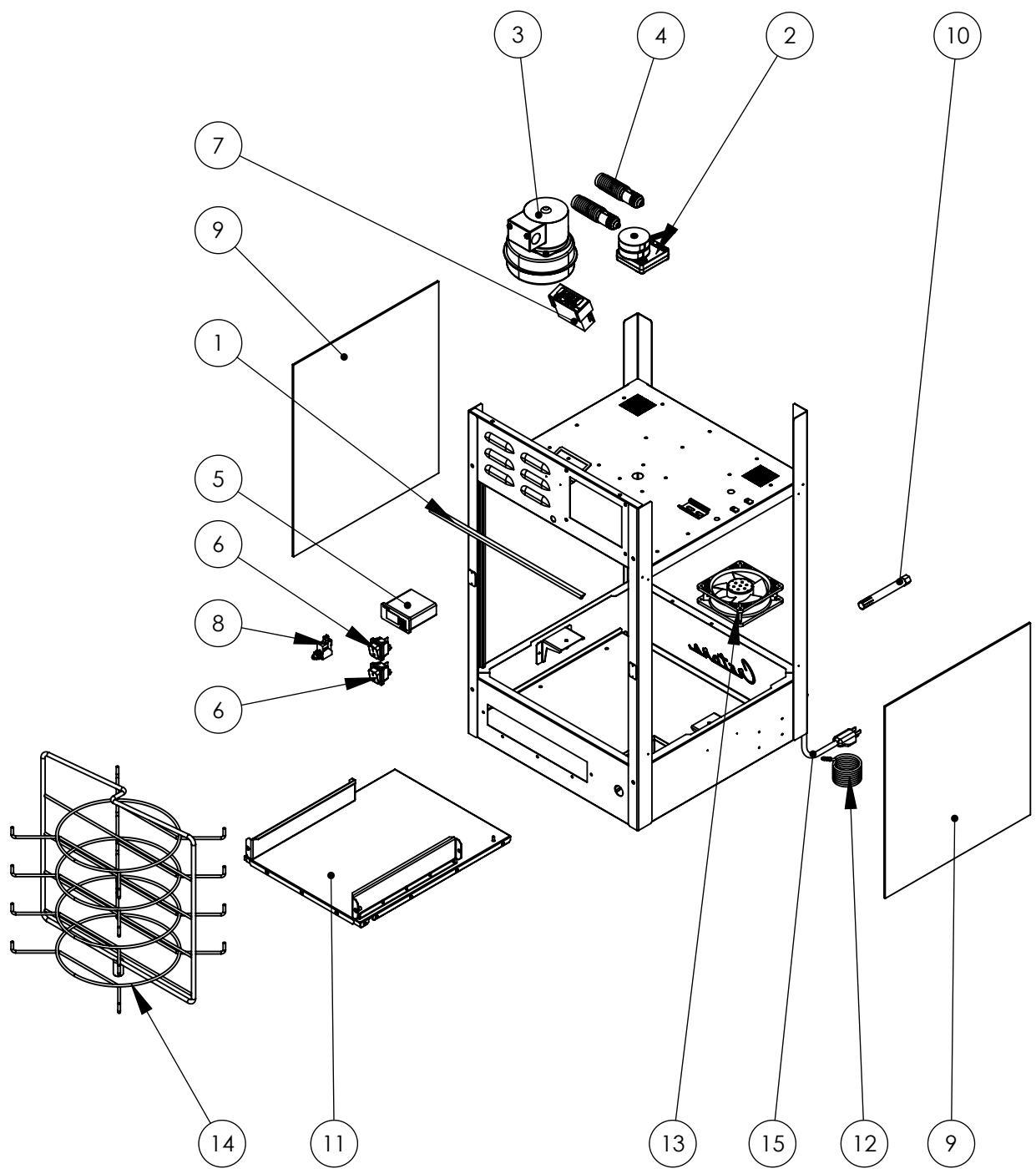
		<b>THIRD ANGLE PROJECTION</b> 176 MITTEL DRIVE, WOOD DALE, IL 60191 www.cretors.com   www.ilo-llru.com	
TOLERANCES x.xx = ± 0.02 x.xxx = ± 0.01 ANGLES = ± 1° HOLES = +0.005 / -0 FINISH = 125Ra		<b>DESCRIPTION</b> <b>PIZZA WARMER, CONVECTION, 120V/1/60HZ</b>	
<b>C SIZE DRAWING</b>		<b>MATERIAL</b> REFER INDIVIDUAL SUB-PARTS	
DRAWN BY ndarji	DRAWN DATE 03/28/2019	<b>DRAWING NUMBER</b> HFWAAPZX-X	
APPROVED BY [Signature]		APPROVED DATE [Date]	
THIS DRAWING CONTAINS INFORMATION PROPRIETARY TO C. CRETORS & CO. AND IS FURNISHED IN CONFIDENCE FOR SOLE PURPOSE OF SUPPLYING THE RECIPIENT WITH NEEDED ENGINEERING DATA. THE CONTENTS SHOULD NOT BE DISCLOSED OR REPRODUCED IN ANY MANNER WITHOUT WRITTEN CONSENT OF C. CRETORS & CO. ALL RIGHTS RESERVED.			<b>APPROX WEIGHT</b> 162.6 LBS <b>REVISION</b> -
			<b>SHEET</b> 1 OF 3


**BILL OF MATERIALS**

ITEM #	QTY.	P/N	DESCRIPTION
1	1	21865	GASKET, FRONT CEILING, PIZZA WARMER
2	1	16068-TH	MOTOR, 120V, W/ TAPPED HOLE
3	1	1460	BLOWER, 1/125HP, 3030RPM, 115V/50/60HZ
4	2	2047	HEAT ELEMENT, 500W, 120V, 28.8 OHMS
5	1	21034	CONTROLLER, TEMPERATURE AND HUMIDITY
6	2	5130	SWITCH, LIGHTED, 230V
7	1	14585	TEMPERATURE CONTROLLER, DIGITAL, 120V
8	1	10662	SWITCH, PUSH BUTTON, 16A 125/250VAC
9	3	21584	GLASS, PIZZA WARMER, NARROW
10	1	21035	SENSOR, HUMIDITY AND TEMPERATURE
11	1	21571	HEAT PAD & STIFFENER ASSY, PIZZA WARMER
12	1	14604	THERMOCOUPLE, RING TYPE
13	1	16996-A	BLOWER, AXIAL, 120V
14	1	21454	RACK, 15" W/ HOOKS, PIZZA WARMER
15	1	1254	CORD, 15AMP, 14-3, NEMA 5-15P



 176 MITTEL DRIVE, WOOD DALE, IL 60191 Ph: (847) 616-6900, (800) 228-1885, Fax: (847) 616-6970 www.cretors.com, postmaster@cretors.com		DESCRIPTION <b>PIZZA WARMER, CONVECTION, 120V/1/60Hz</b>	
DRAWN BY ndarji	DRAWN DATE 03/28/2019	MATERIAL REFER INDIVIDUAL SUB-PARTS	
APPROVED BY	APPROVED DATE	DRAWING NUMBER <b>HFWAAPZX-X</b>	APPROX. WEIGHT 132.9 LBS
		SHEET 2 OF 3	
		REVISION -	



 176 MITTEL DRIVE, WOOD DALE, IL 60191 Ph: (847) 616-6900, (800) 228-1885, Fax: (847) 616-6970 www.cretors.com, postmaster@cretors.com		DESCRIPTION <b>PIZZA WARMER, CONVECTION, 120V/1/60Hz</b>	
DRAWN BY ndarji	DRAWN DATE 03/28/2019	MATERIAL REFER INDIVIDUAL SUB-PARTS	APPROX. WEIGHT 132.9 LBS
APPROVED BY	APPROVED DATE	DRAWING NUMBER HFWAAPZX-X	SHEET 3 OF 3
			REVISION -