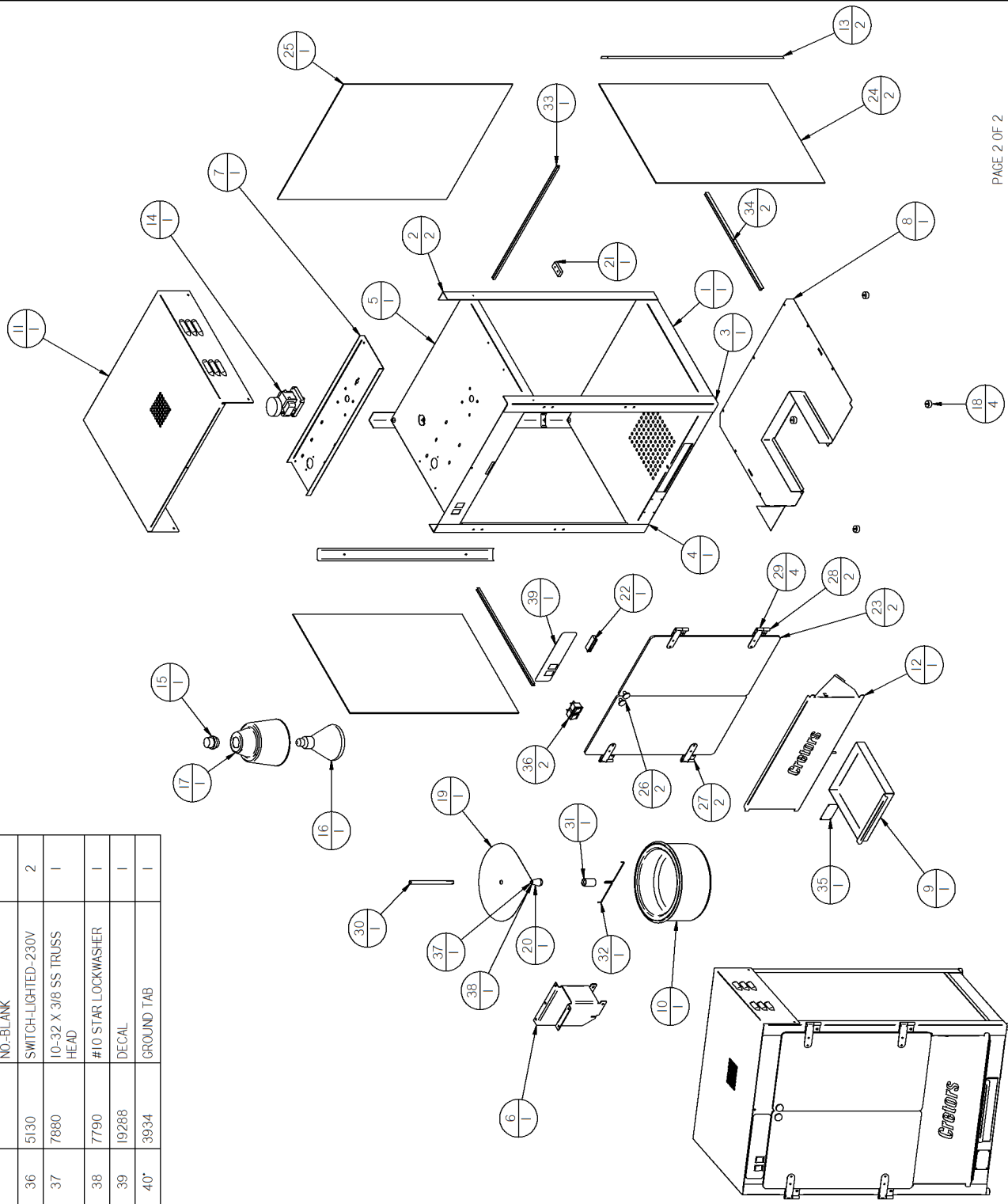
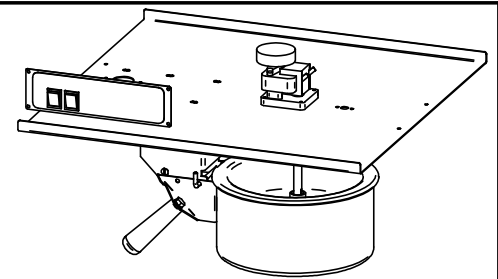
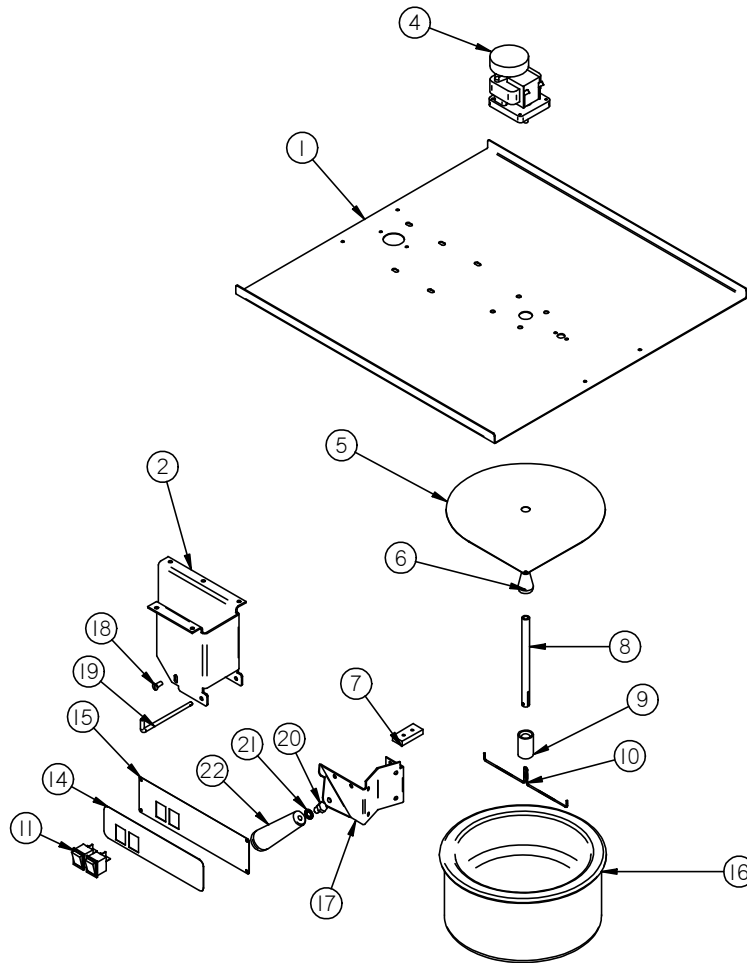


Item Number	Document Number	Title	Quantity	Item Number	Document Number	Title	Quantity
1	I9144-2	BOTTOM - FRAME ECONO 12 OZ	1	35	I517	NAMEPLATE-SERIAL NO.-BLANK	1
2	I9144-5	CUSTOMER CORNER - ECONO 12 OZ	2	36	5130	SWITCH-LIGHTED-230V HEAD	2
3	I9144-4	OPERATOR RIGHT CORNER - ECONO 12 OZ	1	37	7880	10-32 X 3/8 SS TRUSS #10 STAR LOCKWASHER	1
4	I9144-3	OPERATOR LEFT CORNER - ECONO 12 OZ	1	38	7790	DECAL	1
5	I9144-1	TOP - FRAME - ECONO 12 OZ	1	40*	3934	GROUND TAB	1
6	EP906011	HANGER - KETTLE	1				
7	I9145	STIFFENER -12 OZ ECONOMY	1				
8	I9147	BOTTOM COVER - ECONOMY POPPER 12 OZ	1				
9	2689	CLEAN OUT DRAWER - T3000/PFT	1				
10	EP908 / EP912	KETTLE ASSY	1				
11	I0212	TOP-T3000	1				
12	I0180	DROP SHELF-T-3000-PIVOT STYLE	1				
13	I0512	INSIDE CORNER	2				
14	2632-A	MOTOR 120V	1				
15	2409	SOCKET-SNAP-IN PORCELAIN	1				
16	I734	LAMP 250W, 120V IR HEAT LAMP	1				
17	5968	LIGHT GUARD	1				
18	I605	RUBBER FOOT W/HARDWARE	4				
19	EP908033	LID - KETTLE 8 & 12 OZ UNITS	1				
20	I714	KNOB	1				
21	2829	MAGNET CATCH	1				
22	I217	MAGNETIC CATCH	1				
23	I0298	PLEXI-DOOR-T-3000	2				
24	I0294	GLASS (SIDE) T-3000	2				
25	I0293	GLASS (FRONT) T-3000	1				
26	I292	KNOB-CONCAVE W/SCREW	2				
27	I154-2	HINGE - LEFT SIDE	2				
28	I155-2	HINGE - RIGHT SIDE	2				
29	I153	DOOR HINGE STRAP	4				
30	2631	STIRRER SHAFT-T-2000	1				
31	2630	STIRRER SHAFT WEIGHT	1				
32	EP908034	STIRRER WIRE	1				
33	I2161	EXTRUSION-GLASS CHANNEL 20-1/316	1				
34	2817	EXTRUSION-GLASS CHANNEL 17-7/8	2				



C. CREATORS & COMPANY 3243 N. CALIFORNIA AVE. CHICAGO, IL 60618-5890 TEL: 773/588-1690 FAX: 773/588-2171		TRILogy NAME: _____ DRAWN BY: bud _____ DATE: _____ CHECKED: _____ DATE: _____ APPROVED: _____ DATE: _____	
This drawing is the property of C. Creators & Company. It is to be used for the sole purpose of supplying the recipient with needed engineering data. Its contents should not be disclosed or reproduced in any manner without the written consent of C. Creators & Company. All Rights Reserved.		TOLERANCES XXX ±0.00 FRACTIONS ±1/64 HOLE FINISHES L ±.015 ALL HOLES .005	
DESCRIPTION OF REVISION REV. _____ BY _____ DATE _____		SCALE: _____ REF: A DWG. NO. EN12	

Item Number	Document Number	Title
1	19440	TOP PLATE - STIFFENER -12 OZ ECONOMY
2	EP906011	HANGER - KETTLE
4	2632-A	MOTOR 120V
5	EP908033	LID - KETTLE 8 & 12 OZ UNITS
6	1714	KNOB
7	2829	MAGNET CATCH
8	2631	STIRRER SHAFT-T-2000
9	2630	STIRRER SHAFT WEIGHT
10	EP908034	STIRRER WIRE
11	5130	SWITCH-LIGHTED-230V
14	19288	DECAL
15	19441	TRILOGY - SWITCH PLATE - TOP PLATE
16	4814	KETTLE LINER - MODEL 490 CORN POPPER
17	EP906012	BRACKET - KETTLE - 6 - 8 &12 OZ UNITS
18	2407	POPPER LEVEL SCREW
19	EP906027	HINGE PIN 6/8/12 OZ KETTLE
20	7751	3/8-16 X 1/2 HEX BOLT
21	7858	3/8" INTERNAL TOOTH LOCKWASHER
22	2437	DUMP LEVER KNOB



			C. CRETORS & COMPANY 170 MITTEL DRIVE WOOD DALE, IL 60191 TEL: 847-616-6900 FAX: 847-616-6970		TOLERANCES X.XX = ±0.020 X.XXX = ±0.005 FRACT. = ±1/64 125° SURFACE FINISH ±.5° ALL HOLES +.005 -0.000		NAME: TRILOGY	
			This drawing contains information proprietary to C. Cretors & Co. and is furnished in confidence for the sole purposes of supplying the recipient with needed engineering data. Its contents should not be disclosed or reproduced in any manner without the written consent of C. Cretors & Co. All Rights Reserved.		DRAWN BY: bud DATE:		MATERIAL:	
REV.	DESCRIPTION OF REVISION	BY			DATE	CHKD:	WEIGHT:	SCALE:
				APPROVED	DATE:	REV: A	EN12	