

Electric Power Models



Peanut Roasting *and* Corn Popping Machinery

CHICAGO.

C. CRETORS & CO.

January 1st 1917



**This Catalogue Illustrates
and Describes**

ELECTRIC POWER MACHINES ONLY

IF you are interested
in a Steam Power
or Wagon Machine,
write for our special
catalogue illustrating
our line of Steam Ma-
chines, which is by far
the most complete and
successful in existence.

CHICAGO

C. CRETORS & Co.

Electric Power Models

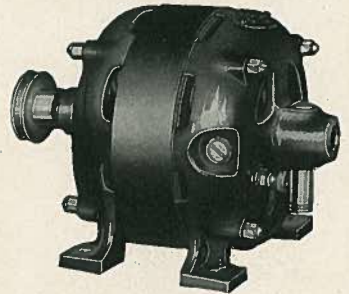


WE ANNOUNCE with pride the most complete and successful line of "Electric Power" Pop-corn and Peanut Machines on the market. Adapted to either **gas** or **gasoline** fuel, the models illustrated herein are especially suited to a wide variety of **store**, and other more or less permanent locations, having electric current available.

Electricity affords a cheap, clean and efficient motive power—**instantly available**. While not as attractive as our steam engines, its use is preferable in such locations as Stores, Amusement Parks, and a wide variety of "indoor" or other permanent places.

The sturdy and dependable electric motors we install require but minimum attention, and enable the merchant to have fresh pop-corn at all times.

Simply turn a switch, light the **gas fire**, and in about three minutes you have six to ten bags of the most delicious pop-corn you ever tasted. You only need see a Cretors Machine in operation, and sample a bag of Cretors "Quality Pop-corn" to appreciate the absolute superiority of **both** over any other like device or product on the market.



New Profits that are "Velvet" for You

Here is a **Real Live Opportunity** for retail merchants or others, to install a most valuable "side line" which will earn **new and attractive profits**, and enable them to **secure full advantage of their location**.

Thousands of merchants throughout the country in every conceivable location, are cleaning up a bunch of "extra money" on Cretors "Quality" Pop-corn—and that profit is "Velvet," as **this business formerly passed their stores un-solicited**.

Relished by everybody, young or old, at **all seasons of the year**, pop-corn prepared "**The Cretors Way**" will prove a big attraction, and profitable adjunct to your present business.

Children cry for it—Everybody buys it.

Cretors pop-corn is a healthy and enjoyable food delicacy, which has a ready market and practically sells itself.

Cretors pop-corn customers are great "repeaters" and will popularize your store, hence a Cretors machine is worth its cost as an advertisement alone.

Greatest Five-Cent Buy Ever Offered

The public spend 5 cents for a bag of Cretors "Quality" pop-corn more cheerfully than anything else—no other novelty gives such satisfying value for the money. To try it—is to buy it.

May More than Pay Your Rent

The "extra profits" a Cretors machine will earn for you may more than pay your store rent; besides attracting to your establishment many new patrons who acquire the "pop-corn habit" in a most surprising manner.

You, doubtless like thousands of others, have underestimated the possibilities of the pop-corn business; but when we explain how easily you can secure this extra money, you will realize that you cannot afford to be without a Cretors machine.

You Have the Location

You have the location, and only require a Cretors machine to enable you to secure full advantage of the established market.

Each day brings its cash dividend—no waiting, your profits start immediately.

Each bag of Cretors "Quality" pop-corn you sell nets you an average profit of 3½ cents or over 230% on your stock investment. What other legitimate business with an equal market, produces such enormous returns?

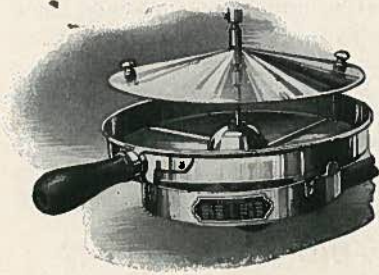


Each Dollar in Receipts Means from 60c. to 70c. Net Profit for You

It is only necessary for you to sell 80 bags of Cretors pop-corn daily to earn \$1000 per year extra profit—many of our customers do much better. Can you afford to ignore this handsome increase to your bank account, the securing of which requires so little effort on your part.

Stands anywhere—No extra help required, and only a nominal investment in non-perishable stock necessary.

Each Kernel Seasoned Alike



The Cretors popper is the **original** world famous "**self seasoning corn popper**"—it has many imitators, but no rivals.

Each and every delicious kernel throughout the sack is "**seasoned precisely alike**"—the last exactly the same as the first. Just the right amount of Butter—just the proper amount of salt. The tender, crisp, snow white kernels fairly melt in the mouth, and the resistless flavor **penetrates** all the way through each **savory morsel**.

Perfectly Crisp and Flaky, it does not grease the sacks, hands or apparel of purchaser, as the seasoning is cooked into the heart of each kernel before popping.

Ready for Immediate Sale

Cretors Pop-corn is ready for immediate sacking and sale as it falls into the popper case—without further buttering, salting, or other manipulation, thus effecting a valuable saving in "time" when sales are crowding, and insuring a most sanitary product. Other so called "self seasoning" poppers must "salt" the corn by a separate and hap-hazard process, resulting in a serious loss of time and uneven seasoning.

Large Capacity

Cretors Poppers have ample capacity to care for a large business, as our single popping-pan models will produce a popping of from six to ten one pound sacks about every three minutes, which means from \$5.00 to \$8.00 per hour, according to size of popping pan. No waiting for popping plate to heat.

Popper can be operated at reduced capacity if desired, thus maintaining a constant attraction, and enabling one to have strictly fresh corn at all times.

Combination Peanut and Pop-Corn Models

The majority of our various models come regularly fitted with Peanut Roasting equipment, at prices often considerably lower than what other manufacturers charge for machines having corn popping facilities only.

Dollar for Dollar Value

Excessive and unwarranted Selling Prices due to elaborate Advertising and Sales Campaigns, are eliminated in our method of marketing, and You receive full benefit of the saving effected.

The intrinsic **Worth** of any Cretors Machine more than justifies its cost, as they possess many exclusive and patented features, which place them in a distinct class by themselves, excelling all competing equipment in every essential feature of Design, Attractiveness, Durability, Simplicity, Quality of Product, Capacity, and Dividend Earning Qualifications.

Figure the proposition as you will, **The Pop-Corn Business is a Winner**, as evidenced by the success achieved by thousands of Cretors Machines in daily use everywhere.

Your Trade is Hungry for Cretors' Pop Corn

The people of your town are hungry for Cretors "Quality" pop-corn. You have the location, and should be banking the harvest of nickels and dimes which now **Pass** your door daily. These profits are easily secured; in fact, waiting for you, but to secure them you must install a Cretors Machine.

Do It Now—each day you delay means that you are losing "real money" which should be on the credit side of your bank book.

Sold on Installments

A reasonable cash down payment will enable you to install a Cretors Popper. The balance can be paid in small monthly installments, which are readily earned by the machine.

Cretors Machines combine Large Capacity with Unequaled Quality—hence **They Get The Business and Hold It. Famous Money Makers**, the limited space one occupies, will prove the most productive of any equal area about your store. This is an exceptional Opportunity for you to enlarge both your business and bank account. **Good reason says: Buy Now.**

After all is said and done: Results are what count; Cretors Machines produce **Results**—and satisfactory ones.

Why Purchase a Substitute and Invite Disappointment?

CHICAGO,

C. CRETORS & CO.

GUARANTEE

We exercise every precaution in the testing and inspection of all machines prior to shipment; but should any part or parts prove defective in material or workmanship within a reasonable length of time, we will gladly replace upon receipt of defective piece with transportation charges prepaid. "It is not what is said in a guarantee that counts—but WHO says it."

Our policy is calculated to show an appreciation of your business and maintain our universal reputation and foremost principle of

"A SQUARE DEAL ALWAYS"

De Luxe Model Corn Popper

This new and highly attractive machine merits the favorable consideration of those who are willing to investigate a most valuable "side line," offering an unprecedented margin of profit. Of exclusive and compact design, the De Luxe Popper is the very embodiment of simplicity and cleanliness, harmonizing with the most elaborate surroundings. Think of the possibilities this machine affords you: it may more than pay your rent, besides adding tone to your store and proving a valuable attraction.

A "De Luxe" popper will produce a far greater **Net Profit** on the amount of space it occupies in or about your premises, than anything else in the store, and you turn your money rapidly.

Surely a most desirable investment for the retail merchant from every standpoint.

Condensed Specifications

Of utmost importance to store owners: The De Luxe Popper is designed and built to conform with the rules and regulations of the National Board of Fire Underwriters, and has been inspected and approved by the Underwriters Laboratories, Inc. Fire proof, all steel frame construction throughout—insuring maximum strength and durability.

Electric Motor Power. Gas or Gasoline Fuel. (Optional).

Corn Popper—Enclosed shaft and gear drive type. Popper pan is stirred through bottom thus eliminating all overhead mechanism. Sanitary and convenient.

Heating System—Entire bottom of Popper Case consists of a nickel plated copper warming tank, which is connected with the copper heating tank under Hot Peanut Drawer. One small gas burner causes a circulation of hot water, which keeps the pop-corn and peanuts "**Always Hot.**" Very economical and efficient. **No Steam Pressure is Generated**, as the heating system is vented to the air.

Hot Peanut Drawer—A generous stock of peanuts can be kept thoroughly heated in drawer (12x20) directly over warming tank.

Stock Drawer—(12x20) alongside Hot Peanut Drawer.

Metal Roof—Ornamental in design—large ventilator in center.

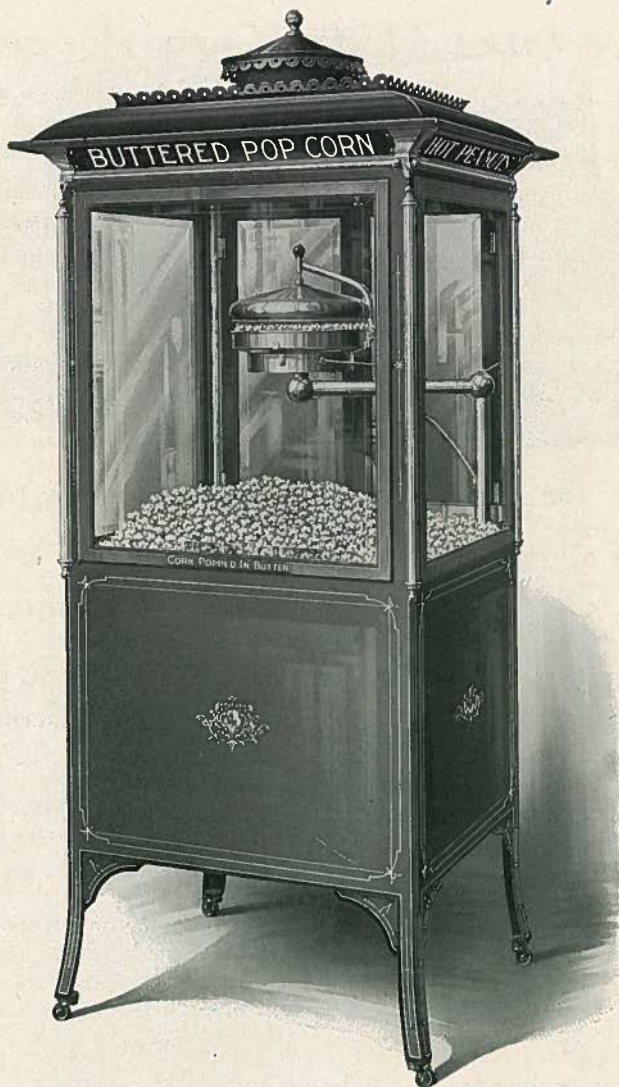
Three Transparent Flash Glass Signs in upper portion of case produce a bright and pleasing effect day or night.

Brass Trim—is of exclusive design. Nickel Plated.

Glass—Bevel edge plate throughout. Double hinged doors at rear.

Electric Light—Socket in upper part of case (inside) affords brilliant illumination.

Fuses, Switches, etc.—Enclosed in steel Panel box.



Corn Separator—Is supplied for removing unpopped kernels.

Painting—of highest grade, artistically striped and decorated. Standard color: Crimson red with black and gold leaf striping.

Dimensions—popper case 30 inches wide by 26 inches deep exclusive of metal roof (37x32). Height 6 feet 8 inches. Weight Machine only about 275 pounds. Send for **Special Bulletin and Complete Specifications**.

See Price List for Price and Installment Terms.



De Luxe Model Corn Popper with Peanut Roaster

One of our very latest and most attractive models—right “up-to-the-minute” in design and trade-winning features.

Operated by Electric Motor with either **Gas** or **Gasoline Fuel**, it is the very embodiment of efficiency and a credit to any establishment.

The General Specifications are the same as our “De Luxe” model described on page 6 with the exception that this machine is fitted with a power driven **Peanut Roasting Cylinder** of about 14 pounds capacity—thus enabling the owner to roast his own peanuts and have a fresh stock of the same at all times.

Shelf over Roasting Cylinder will be found very convenient for displaying package goods.

Two exterior electric lights in front under roof—one additional inside popper case.

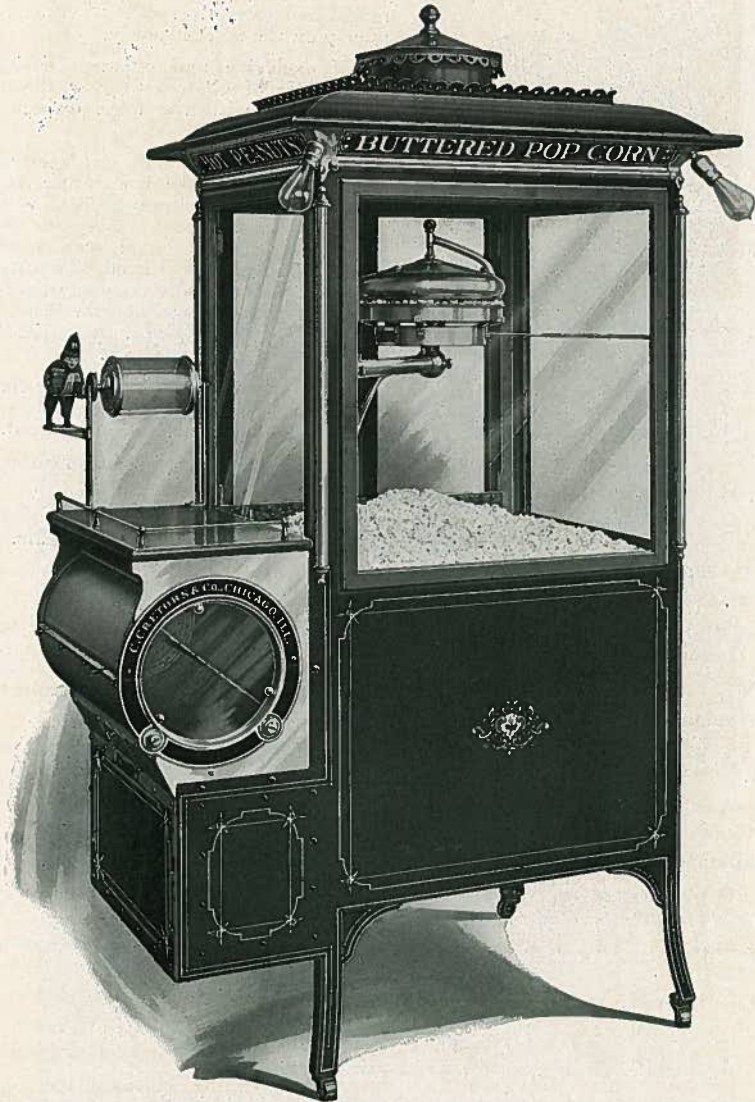
Gasoline Fuel—\$10.00 extra.

Refer to page 6 for additional information.

Dimensions—Length 45 inches; Depth 26 inches; Height 6 feet 8 inches. Weight (machine only) 420 pounds. Approved by the Underwriters Laboratories.

A highly Successful machine which will quickly earn its cost in any reasonable location.

See Price List for **Price and Installment Terms.**



"De Luxe" Model—Popper With Roasting Cylinder

Enlarged No. 6—Special Finish Corn Popper and Peanut Roaster



A recent and exceptionally popular model representing the best value for the money on the market today.

Of exclusive and compact design this machine is of Cretors' Quality throughout, harmonizing with the most elaborate surroundings.

Always on the job and ever ready, it will work industriously for you during the entire year—earning daily "new profits" which will make the limited space it occupies the most productive of any equal area about the store. Of Special Finish Throughout, this model is especially popular with Moving Picture Houses, Confectioners, Fruit Stores, Grocers, Tobacco Shops, 5 & 10c Stores, General Stores, Grocers, etc.

Simple, Durable and Economical, this machine is a wonderful trade-puller for other goods you sell, and affords a valuable opportunity for merchants to materially increase their business, and enjoy new and "Extra" profits now passing their door unsolicited.

Frame or body of machine is of our famous "all steel" construction—thus insuring maximum strength, lightness and durability.

Corn Popper is of the same size as our largest and most expensive machines, being direct connected to motor by shaft and worm gear drive which is positive and durable. Corn Separator is supplied for removing hard kernels.

Popper Case Bottom—Nickel Plated copper.

Roasting Cylinder is of 12 pounds capacity; operated by bicycle chain and sprocket drive with disengaging clutch. Tester is provided for examining peanuts while roasting without stopping motor. Roasting Cylinder is encased in nickel plated copper jacketing highly polished. Peanuts are dumped directly into the heated compartment under popper case without removing roasting cylinder from its bearings.

Pop-corn and Peanut Compartments are efficiently and economically heated by a single Gas Burner, thus keeping stock hot and crisp.

Four Electric Light Sockets are installed as shown in cut, thus affording abundant and attractive illumination. All electric wires are encased in metal moulding.

Adjustable Shelf—on left is very convenient and easily detached.

Electric Motor—is of highest grade and standard manufacture; amply powerful to operate corn popper and roasting cylinder at the same time.

Display—Popcorn and Peanuts are displayed to the best possible advantage from three sides of the machine.

Fuel—Gas Burners are standard equipment—Gasoline Burners optional.

Artistic Brass and Copper Trim—highly polished and Nickel Plated.

Finish—painted in White Enamel, handsomely decorated.

Frame Dimensions:—24 inches square; Height 67½ inches to top of roasting cylinder; Weight: (machine only) 215 pounds. Mounted on casters.

Simple, Reliable and Attractive, this machine is of greater capacity and a better Dividend Earner than other makes of machines costing double the money.

Unequaled by any other machine on the market of similar price, this model will quickly earn its cost in any reasonable location.

See Price List for Price and Installment Terms.



Enlarged No. 6—Special Finish

Model 400—Peanut Roaster and Corn Popper

An exceptional machine of handsome design and **Large Capacity**—especially adapted to Department Stores, Pop-Corn Shops, or other "Indoor Locations." All steel frame construction, designed and built to conform with the rules and regulations of the National Board of Fire Underwriters. Inspected and Approved by the Underwriters Laboratories, Inc.

Double Corn Poppers—of maximum capacity same as used on our largest and most expensive Wagon Machines. Operating Mechanism all enclosed within the sanitary nickel plated standard.

Electric Motor Power—Gas Fuel. Gasoline Fuel \$10.00 extra.

Power Transmission—shaft and gear drive in conjunction with bicycle chain and sprockets.

Heating System—Nickel Plated copper popper case bottom is heated by hot water circulation, supplied by separate copper heating tank under Hot Peanut Drawer. One small gas burner under this tank causes a circulation of hot water, which keeps the corn and peanuts **Always Hot**. Very economical and efficient. **No Steam Pressure is Generated**, as the apparatus is vented to the open air.

Peanut Roaster Capacity—20 pounds.

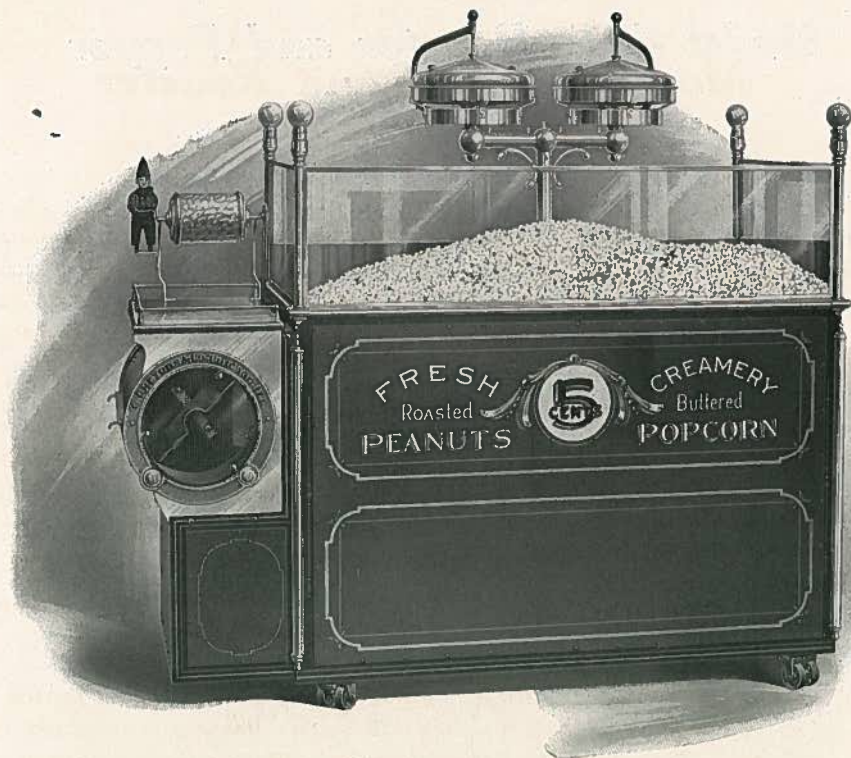
Hot Peanut Drawer—a generous stock of peanuts can be kept thoroughly heated in drawer (11x22) directly over boiler or heating tank.

Stock Drawers—three in number afford ample storage facilities for raw pop-corn, peanuts, etc.

Electric Lights—four electric light sockets surmount popper case corner posts. All electric light wires run in metal moulding.

Brass Trim—of exclusive design, carefully machined from solid brass castings. Brass tubing is of heavy gauge, highly finished. All trim is Nickel Plated. Option of Polished Brass.

Corn Separator—is supplied for removing un-popped kernels.



Model 400—Popper and Roaster

Fuses, Switches, etc., are enclosed in steel panel box.

Painting—Is of the very highest order, artistically striped in gold leaf and color. Standard color: Crimson Red with black and gold leaf striping. Other colors to order.

Dimensions—66 inches long; 31 inches wide; 63 inches high to top of poppers. Mounted on universal casters. Weight, 475 pounds.

This machine is especially popular with Five and Ten Cent Stores.

See Price List for Price and Installment Terms.

Note

If Peanut Roasting Cylinder is not wanted, same can be omitted, and a reasonable credit allowed from list price of machine.

As an additional attraction when so desired, we can at a reasonable extra cost mount one of our full Nickel Plated Steam Engines on shelf over Roasting Cylinder and propel same by means of Electric Motor.

Put a Model 400 to work in your store, and see it earn a harvest of nickels and dimes that will make the limited space it occupies, the most productive of any equal area about your premises.

Model 401—Roaster and Popper With Case

General design and specifications of this machine are similar to our Model 400 shown on page 13, excepting that the popper case is completely enclosed as shown in illustration. The "double" corn popper is of large capacity and enables one to care for a rush business with dispatch and all around satisfaction. Just the outfit for Ball Parks, Fair Grounds, Theatre Lobbies, Department Stores, etc., which require an attractive machine of maximum capacity. Built to conform with the rules and regulations of the National Board of Fire Underwriters—Inspected and Approved by the Underwriters Laboratories, Inc. All steel frame construction throughout.

Sheet steel top or roof painted to harmonize with general finish. Wired for four electric lights at roof corners as shown. Electric wires run in steel moulding. Exclusive heavy brass trim—Nickel Plated. Bevel edge plate glass throughout. Double hinged doors at rear.

Heating System—Nickel plated copper Popper-case bottom is heated by hot water circulation. **No Steam Pressure is Generated**, as the apparatus is vented to the open air.

Hot Peanut Drawer—a generous stock of peanuts can be kept thoroughly heated in drawer directly over hot water heating tank.

Extra Stock Drawers afford ample storage facilities for raw corn, peanuts, etc. Peanut Roasting cylinder is of 20 pounds capacity.

Fuses, Switches, etc., are enclosed in steel panel box.

Painting is of the very highest order, artistically striped and lettered in gold leaf and color.

Electric Motor Power—Gas Fuel.

Gasoline Fuel (pressure system) \$10.00 extra. **Corn Separator** is supplied for removing un-popped kernels. This model can be operated either inside the store or out of doors.

Dimensions—65 inches long; 31 inches deep; height to top of popper case about 7 feet. Weight about 525 pounds.

See Price List for Price and Installment Terms.



Model 401—Roaster and Popper—With Case

Note

As an additional attraction when so desired, we can at reasonable extra cost mount one of our full Nickel Plated Steam Engines on shelf over Roasting Cylinder and propel same by means of Electric Motor.



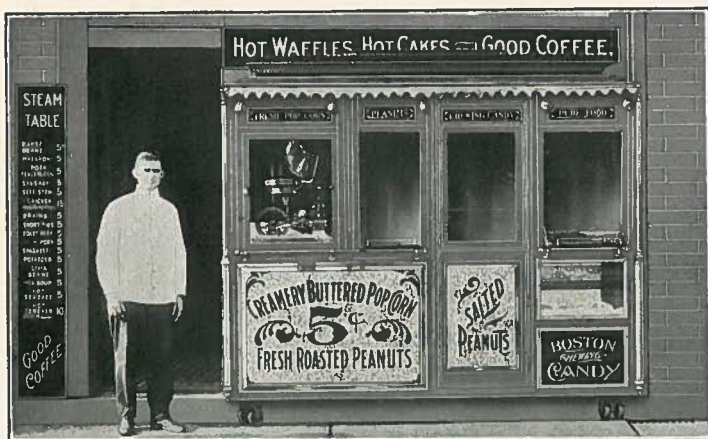
Special Store Front Outfits

Accompanying illustrations show special "Store Front Outfits" complete in all details, intended to be placed inside the building line. Machines illustrated are adapted to outdoor as well as indoor use, and the design can be modified to meet existing conditions. Ample shelving is provided for candies, gum and kindred stock. Sash are provided with drop counters, etc., for serving trade.

Machines along these lines are especially valuable in restricted locations, and we will gladly furnish suggestions and quotations for special equipment of this nature, which is becoming very popular with confectioners and others in exclusive locations. Built to order only.

Motive Power—option of either Electricity or Steam. Fuel, Gas or Gasoline. Where electricity is used, the engine may be retained as an attraction if desired and propelled by the electric motor.

Write for additional information.



Special Store Front Outfits

Model 550—Electric Power Roaster and Corn Popper

A handsome and compact machine suited to either "indoor" or outside use.

Has a large capacity of both Pop-corn and Peanuts, and is built in Electric and Steam Power Models.

Frame built entirely of steel; handsome nickel plated engine and trim. All steel top, wired for electric light at each corner with transparent flash glass sign on each side of roof. Chip plate glass sign under popper case lettered as desired.

Double Corn Popper. Improved Special type, of large capacity. Nickel plated copper popper Case Bottom, and Hot Peanut Drawer, heated by hot water circulating system.

Bevel edge plate glass throughout.

Electric Motor Drive—Gas Fuel. Gasoline Fuel equipment \$10.00 extra.

An unusually attractive and durable machine which is a big money maker.

Dimensions—frame 30 inches deep (front to rear) 6 feet long, 7 feet 4 inches high. Extreme width of roof 38 inches. Capacity of Roasting Cylinder 20 pounds. Write for additional details.

See Price List for Price and Installment Terms.

Note

Steam Engine shown in illustration is not standard equipment on Electric Power Machine of this model—but may be supplied as an additional attraction (when so desired) at a reasonable extra cost—engine being propelled by electric motor.



Model 550—Electric Power Peanut Roaster and Popper

Engine shown in cut is special equipment

Model 20—Special Counter Popper



A very attractive and popular corn popper for Counter or Show Window use. This machine is a great favorite with Department Stores, 5 and 10c Stores, Confectioners, etc., who appreciate its simple and compact design. Easily moved from one place to another, it can be used in the show window as an attraction today, and elsewhere about the store tomorrow.

Simply clear a space 26x30 inches, put this machine to work and see it earn greater profits than any other equal area about the store. **A Complete Unit in Itself**, it can be quickly and easily moved to the Ball Park, Fair Grounds, Church Festival or other gatherings on short notice.

Corn Popper is of large size and capacity.

Entire Popper-case Bottom is of nickel plated copper efficiently heated by means of hot water circulation.

Ornamental brass and copper trim highly finished and nickel plated.

Electric Motor Drive—Gas Fuel.

Gasoline Fuel Equipment extra.

Dimensions—30 inches long; 26 inches deep; 50 inches high to top of case.

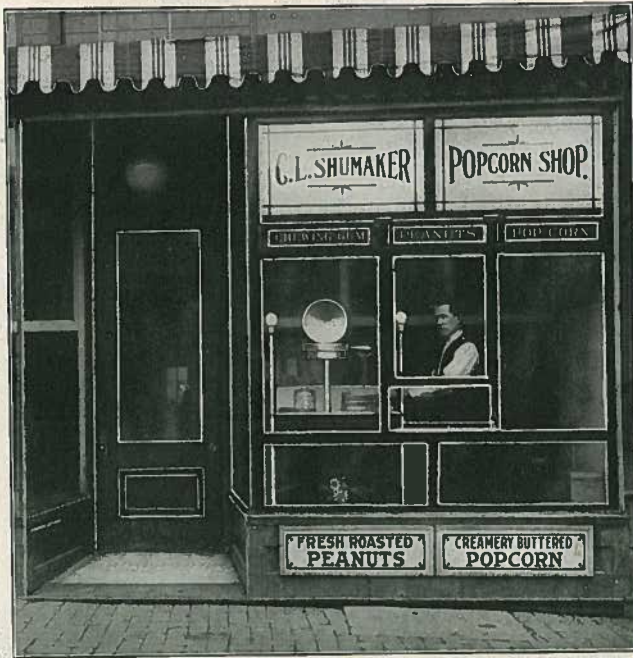
One must see this machine to appreciate its exceptional advantages and beauty—a money maker of unusual merit; it is bound to please.

See Price List for Price and Installment Terms.



Model 20—Special Counter Popper

Special Window Fronts



Above cut illustrates a special "Window Front" installation used in conjunction with one of our regular stock machines. The store front or window is removed and a special frame fitted with suitable sash, drop shelving, etc., inserted in its place.

As a rule this type of equipment is less expensive than the design shown on page 17, as generally only the front panel is required; and this can be modified in elaborateness to conform with wishes of customer.

Additional information on request.



Special Window Fronts

***Enlarged No. 6—Peanut Roaster and Corn Popper
(Standard Finish)***

A handsome and compact machine occupying but little space either inside the store, or on the sidewalk in front.

Pop-corn and peanuts are displayed to the best possible advantage from the front and two sides.

Large size corn Popper, direct gear driven by Electric Motor.

Peanut Roaster—capacity 12 pounds, bicycle chain drive with dis-engaging clutch and tester for trying peanuts while roasting. Peanuts dump directly into heated compartment under popper case without removing cylinder from its bearings.

Nickel Plated copper popper case bottom.

Pop-corn and Peanut Compartments efficiently heated by a single gas burner, thus keeping stock hot and crisp.

Corn Separator is supplied for removing hard kernels.

Electric Motor Drive—Gas Fuel.

Option of Gasoline burners if desired—regularly equipped with gas burners unless otherwise specified.

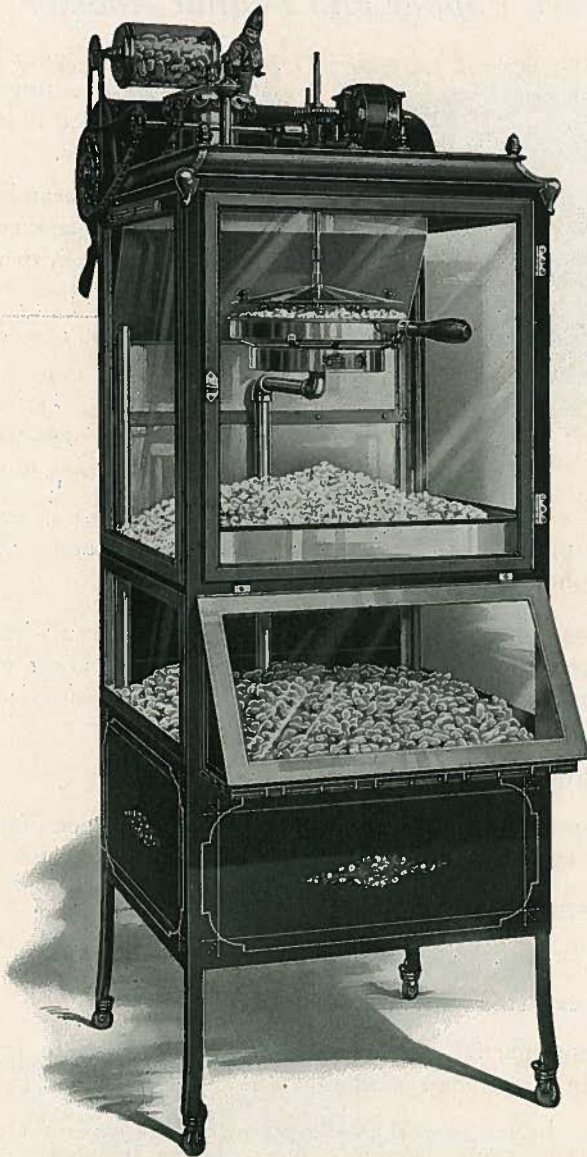
Brass and copper trim Natural Finish highly polished.

Finish—Crimson Red Body, neatly striped.

Frame Dimensions—24 inches square; height to top of roasting cylinder, 67½ inches. Weight 230 pounds.

An Attractive and Durable machine which is bound to satisfy.

See Price List for Price and Installment Terms.—



*Enlarged No. 6—Peanut Roaster and Corn Popper
(Standard Finish)*

Standard No. 6—Electric Power Corn Popper and Peanut Roaster



An Electric Power Model of our most popular low priced machine—especially adapted to small towns or crowded quarters.

Several thousand steam machines of this design are earning big dividends for their owners throughout the country.

All details are carefully designed.

Popper case and peanut compartment are efficiently heated, thus keeping stock hot and crisp.

Corn Popper is smaller in size, but of the same principle as our larger machines. Capacity about 70 one pound sacks per hour.

Peanut Roaster capacity 10 pounds, bicycle chain driven with dis-engaging clutch and tester for trying peanuts while roasting. Peanuts dump directly into heated compartment under popper case without removing roasting cylinder from its bearings.

Electric Motor Drive—Gas Fuel.

Option of Gasoline Burners if desired—regularly equipped with Gas burners unless otherwise specified.

Brass and Copper trim natural finish, highly polished.

Corn Separator is supplied for removing un-popped kernels.

Finish—Crimson Red body, neatly striped.

Frame Dimensions: 20 inches square; 64 inches high to top of roasting cylinder. Weight 185 pounds without crate.

Has many of the features of our larger and more expensive machines and is far superior to any other machine on the market of equal price.

See Price List for Price and Installment Terms.

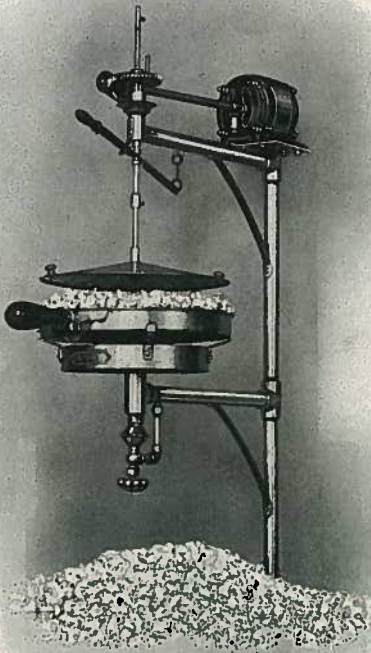
Note

This machine can be supplied in White Enamel Finish, either with or without Electric Lights at a reasonable extra. See Price List.



Standard No. 6—Popper and Roaster

Model 21—Wall or Window Popper



An attractive and economical outfit especially designed for Show Windows or other restricted space. Nickel Plated standard extends to floor with suitable supporting flange and cleats. **Corn Popper** is of large size and capacity—direct driven by worm gears, attached to motor shaft. Gas is conducted to burner under popping pan through nickel plated standard. Pop-corn Receiving Pan of reasonable dimensions is included. Bottom of said pan is efficiently heated by means of a water tank attached thereto, under which is a single gas burner thus keeping the corn crisp and hot.

Electric Motor Drive.

Gas Fuel.

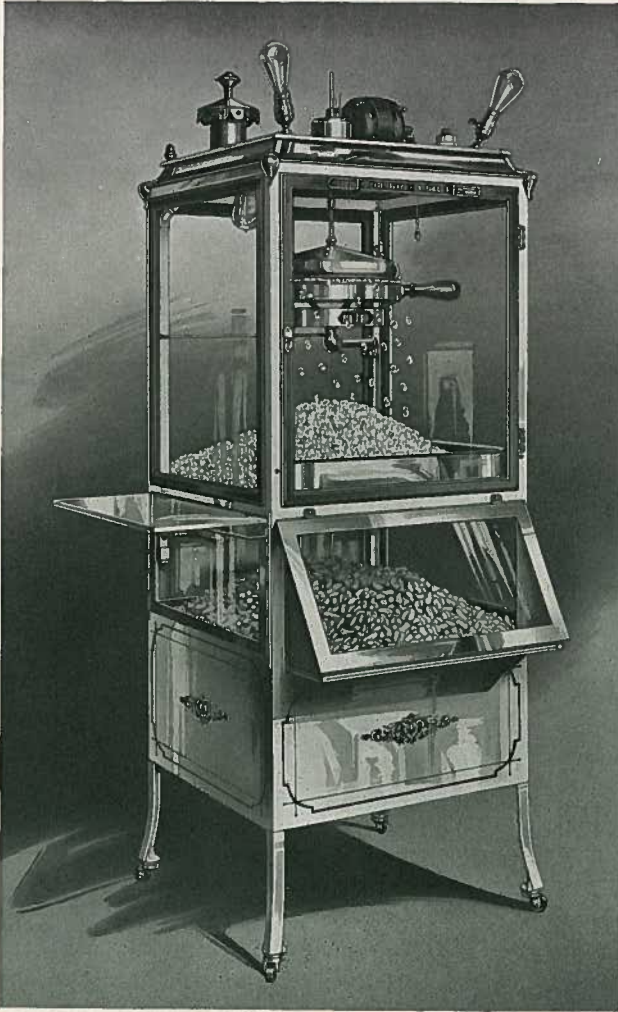
Gasoline burners can be supplied at reasonable extra cost. Gas Fuel equipment is standard and supplied unless otherwise specified.

As this outfit is generally installed in a show window, no base is provided. To install, simply cut a hole in window flooring to receive flange of pop-corn receiving pan. Popper standard can be cut to desired length.

Simple and Efficient, this machine will prove a big attraction in your show window and earn handsome profits. A child can operate it.

See Price List for Price and Installment Terms.

Enlarged No. 6—Corn Popper Only—Special Finish



This attractive and serviceable machine is of the same general design and dimensions as our Enlarged No. 6 Machine shown on page 11 only It Has No Peanut Roaster. The popper case has glass on all four sides and the top is finished as shown in accompanying cut. The heated peanut display compartment under popper case is retained, thus enabling one to handle and sell peanuts which are roasted elsewhere.

Popper case bottom and Peanut Compartment efficiently heated.

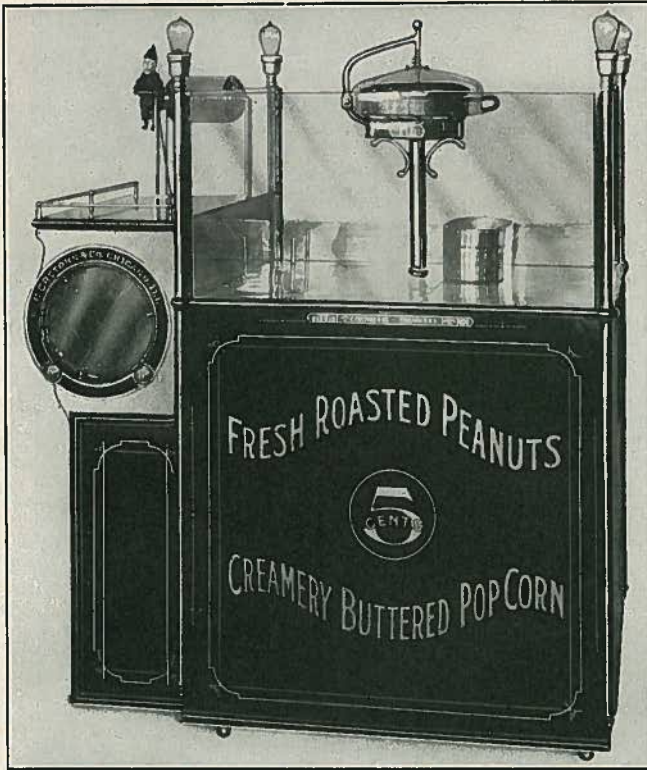
Painted in White Enamel. Wired for Electric Lights as shown.

A most handsome, attractive, and satisfactory machine which is bound to prove a big money maker in most any location.

Electric Motor Drive. Option of either Gas or Gasoline Fuel.

Frame Dimensions—24 inches square. Height to top of motor 68 inches. Weight 190 pounds. Nickel Plated Trim.

Model 30—Peanut Roaster and Corn Popper



A shorter Model 400—fills the bill nicely for show window or store where but a single corn popper of good capacity is desired, in conjunction with peanut roaster. Nickel plated copper bottom of popper case, and Hot Peanut Drawer are efficiently heated.

Brass trim highly finished and nickel plated. Wired for electric lights as shown. Peanut Roaster capacity 20 pounds.

Electric Motor Drive—Gas Fuel.

Gasoline fuel equipment \$10.00 extra.

Handsomely painted and decorated. Write for additional information.

Dimensions: 51 inches long; 31 inches wide, 63 inches high to top of poppers.

See Price List for Price and Installment Terms.



