

Sample Copy

# Electric Power Models



Peanut Roasting  
*and*  
Corn Popping Machinery

C. CRETORS & CO.

CHICAGO.

11/3/20

This Catalogue Illustrates  
and Describes

# **ELECTRIC POWER MACHINES ONLY**

---

**I**F you are interested  
in a **Steam Power**  
or **Wagon Machine**,  
write for our special  
catalogue illustrating  
our line of Steam Ma-  
chines, which is by far  
the most complete and  
successful in existence.

**C. CRETORS & Co.**  
CHICAGO



## *Each Kernel Seasoned Alike*

The Cretors popper is the original world famous "self seasoning corn popper"—it has many imitators, but no rivals.

Each and every delicious kernel throughout the sack is "seasoned precisely alike"—the last exactly the same as the first. Just the right amount of Butter—just the proper amount of salt. The tender, crisp, snow white kernels fairly melt in the mouth, and the resistless flavor penetrates all the way through each savory morsel.

Perfectly Crisp and Flaky, it does not grease the sacks, hands or apparel of purchaser, as the seasoning is cooked into the heart of each kernel before popping.

## *Ready for Immediate Sale*

Cretors Pop-corn is ready for immediate sacking and sale as it falls into the popper case—without further buttering, salting, or other manipulation, thus effecting a valuable saving in "time" when sales are crowding, and insuring a most sanitary product. Other so called "self seasoning" poppers must "salt" the corn by a separate and hap-hazard process, resulting in a serious loss of time and uneven seasoning.

## *Large Capacity*

Cretors Poppers have ample capacity to care for a large business, as our single popping-pan models will produce a popping of from six to ten one pound sacks about every three minutes, which means from \$5.00 to \$8.00 per hour, according to size of popping pan. No waiting for popping plate to heat.

Popper can be operated at reduced capacity if desired, thus maintaining a constant attraction, and enabling one to have strictly fresh corn at all times.

## *Combination Peanut and Pop-Corn Models*

The majority of our various models come regularly fitted with Peanut Roasting equipment, at prices often considerably lower than what other manufacturers charge for machines having corn popping facilities only.

## *Dollar for Dollar Value*

Excessive and unwarranted Selling Prices due to elaborate Advertising and Sales Campaigns, are eliminated in our method of marketing, and You receive full benefit of the saving effected.



The intrinsic **Worth** of any Cretors Machine more than justifies its cost, as they possess many exclusive and patented features, which place them in a distinct class by themselves, excelling all competing equipment in every essential feature of Design, Attractiveness, Durability, Simplicity, Quality of Product, Capacity, and Dividend Earning Qualifications.

Figure the proposition as you will, **The Pop-Corn Business is a Winner**, as evidenced by the success achieved by thousands of Cretors Machines in daily use everywhere.

## ***Your Trade is Hungry for Cretors' Pop Corn***

The people of your town are hungry for Cretors "Quality" pop-corn. You have the location, and should be banking the harvest of nickels and dimes which now **Pass** your door daily. These profits are easily secured; in fact, waiting for you, but to secure them you must install a Cretors Machine.

**Do It Now**—each day you delay means that you are losing "real money" which should be on the credit side of your bank book.

## ***Sold on Installments***

A reasonable cash down payment will enable you to install a Cretors Popper. The balance can be paid in small monthly installments, which are readily earned by the machine.

Cretors Machines combine Large Capacity with Unequaled Quality—hence **They Get The Business and Hold It. Famous Money Makers**, the limited space one occupies, will prove the most productive of any equal area about your store. This is an exceptional Opportunity for you to enlarge both your business and bank account. **Good reason says: Buy Now.**

After all is said and done: Results are what count; Cretors Machines produce **Results**—and satisfactory ones.

## **Why Purchase a Substitute and Invite Disappointment?**

CHICAGO,

C. CRETORS & CO.

### **GUARANTEE**

*We exercise every precaution in the testing and inspection of all machines prior to shipment; but should any part or parts prove defective in material or workmanship within a reasonable length of time, we will gladly replace upon receipt of defective piece with transportation charges prepaid. "It is not what is said in a guarantee that counts—but WHO says it."*

*Our policy is calculated to show an appreciation of your business and maintain our universal reputation and foremost principle of*

**"A SQUARE DEAL ALWAYS"**



# *De Luxe Model Corn Popper*

This new and highly attractive machine merits the favorable consideration of those who are willing to investigate a most valuable "side line," offering an unprecedented margin of profit. Of exclusive and compact design, the De Luxe Popper is the very embodiment of simplicity and cleanliness, harmonizing with the most elaborate surroundings. Think of the possibilities this machine affords you: it may more than pay your rent, besides adding tone to your store and proving a valuable attraction.

A "De Luxe" popper will produce a far greater **Net Profit** on the amount of space it occupies in or about your premises, than anything else in the store, and you turn your money rapidly.

Surely a most desirable investment for the retail merchant from every standpoint.

## *Condensed Specifications*

Of utmost importance to store owners: The De Luxe Popper is designed and built to conform with the rules and regulations of the National Board of Fire Underwriters, and has been inspected and approved by the Underwriters Laboratories, Inc. Fire proof, all steel frame construction throughout—insuring maximum strength and durability.

**Electric Motor Power. Gas or Gasoline Fuel.** (Optional).

**Corn Popper**—Enclosed shaft and gear drive type. Popper pan is stirred through bottom thus eliminating all overhead mechanism. Sanitary and convenient.

**Heating System**—Entire bottom of Popper Case consists of a nickel plated copper warming tank, which is connected with the copper heating tank under Hot Peanut Drawer. One small gas burner causes a circulation of hot water, which keeps the pop-corn and peanuts "Always Hot." Very economical and efficient. **No Steam Pressure is Generated,** as the heating system is vented to the air.

**Hot Peanut Drawer**—A generous stock of peanuts can be kept thoroughly heated in drawer (12x20) directly over warming tank.

**Stock Drawer**—(12x20) alongside Hot Peanut Drawer.

**Metal Roof**—Ornamental in design—large ventilator in center.

**Three Transparent Flash Glass Signs** in upper portion of case produce a bright and pleasing effect day or night.

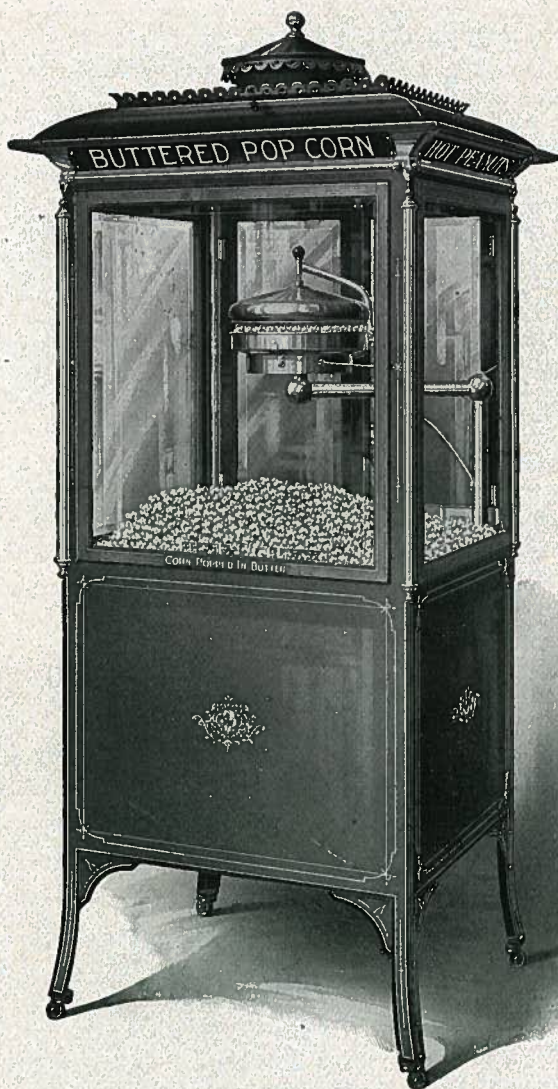
**Brass Trim**—is of exclusive design. Nickel Plated.

**Glass**—Bevel edge plate throughout. Double hinged doors at rear.

**Electric Light**—Socket in upper part of case (inside) affords brilliant illumination.

**Fuses, Switches, etc.**—Enclosed in steel Panel box.





**Corn Separator**—Is supplied for removing unpopped kernels.

**Painting**—of highest grade, artistically striped and decorated. Standard color: Crimson red with black and gold leaf striping.

**Dimensions**—popper case 30 inches wide by 26 inches deep exclusive of metal roof (37x32). Height 6 feet 8 inches. Weight Machine only about 275 pounds. **Send for Special Bulletin and Complete Specifications.**

**See Price List for Price and Installment Terms.**





## ***De Luxe Model Corn Popper with Peanut Roaster***

One of our very latest and most attractive models—right “up-to-the-minute” in design and trade-winning features.

Operated by Electric Motor with either **Gas** or **Gasoline Fuel**, it is the very embodiment of efficiency and a credit to any establishment.

The General Specifications are the same as our “De Luxe” model described on page 6 with the exception that this machine is fitted with a power driven **Peanut Roasting Cylinder** of about 14 pounds capacity—thus enabling the owner to roast his own peanuts and have a fresh stock of the same at all times.

Shelf over Roasting Cylinder will be found very convenient for displaying package goods.

Two exterior electric lights in front under roof—one additional inside popper case.

Gasoline Fuel— extra.

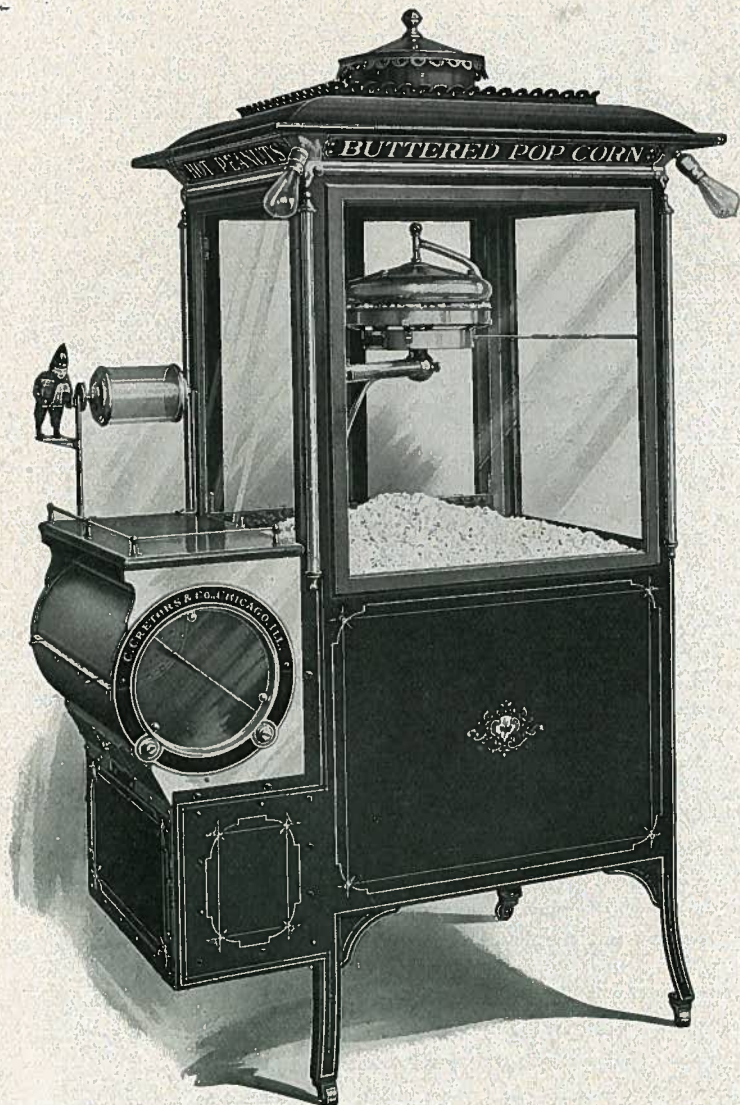
Refer to page 6 for additional information.

Dimensions—Length 45 inches; Depth 26 inches; Height 6 feet 8 inches. Weight (machine only) 420 pounds. Approved by the Underwriters Laboratories.

A highly Successful machine which will quickly earn its cost in any reasonable location.

See Price List for **Price and Installment Terms.**





***"De Luxe" Model—Popper With Roasting Cylinder***



## ***Enlarged No. 6—Special Finish Corn Popper and Peanut Roaster***



A recent and exceptionally popular model representing the best value for the money on the market today.

Of exclusive and compact design this machine is of Cretors' Quality throughout, harmonizing with the most elaborate surroundings.

Always on the job and ever ready, it will work industriously for you during the entire year—earning daily "new profits" which will make the limited space it occupies the most productive of any equal area about the store. Of **Special Finish Throughout**, this model is especially popular with Moving Picture Houses, Confectioners, Fruit Stores, Grocers, Tobacco Shops, 5 & 10c Stores, General Stores, etc.

**Simple, Durable and Economical**, this machine is a wonderful trade-puller for other goods you sell, and affords a valuable opportunity for merchants to materially increase their business, and enjoy new and "Extra" profits now passing their door unsolicited.

Frame or body of machine is of our famous "all steel" construction—thus insuring maximum strength, lightness and durability.

**Corn Popper** is of the same size as our largest and most expensive machines, being direct connected to motor by shaft and worm gear drive which is positive and durable. **Corn Separator** is supplied for removing hard kernels.

**Popper Case Bottom**—Nickel Plated copper.

**Roasting Cylinder** is of 12 pounds capacity; operated by bicycle chain and sprocket drive with disengaging clutch. **Tester** is provided for examining peanuts while roasting without stopping motor. **Roasting Cylinder** is encased in nickel plated copper jacketing highly polished. **Peanuts** are dumped directly into the heated compartment under popper case without removing roasting cylinder from its bearings.

**Pop-corn and Peanut Compartments** are efficiently and economically heated by a single **Gas Burner**, thus keeping stock hot and crisp.

**Four Electric Light Sockets** are installed as shown in cut, thus affording abundant and attractive illumination. All electric wires are encased in metal moulding.

**Adjustable Shelf**—on left is very convenient and easily detached.

**Electric Motor**—is of highest grade and standard manufacture; amply powerful to operate corn popper and roasting cylinder at the same time.

**Display**—Popcorn and Peanuts are displayed to the best possible advantage from three sides of the machine.

**Fuel**—Gas Burners are standard equipment—Gasoline Burners optional.

**Artistic Brass and Copper Trim**—highly polished and Nickel Plated.

**Finish**—painted in White Enamel, handsomely decorated.

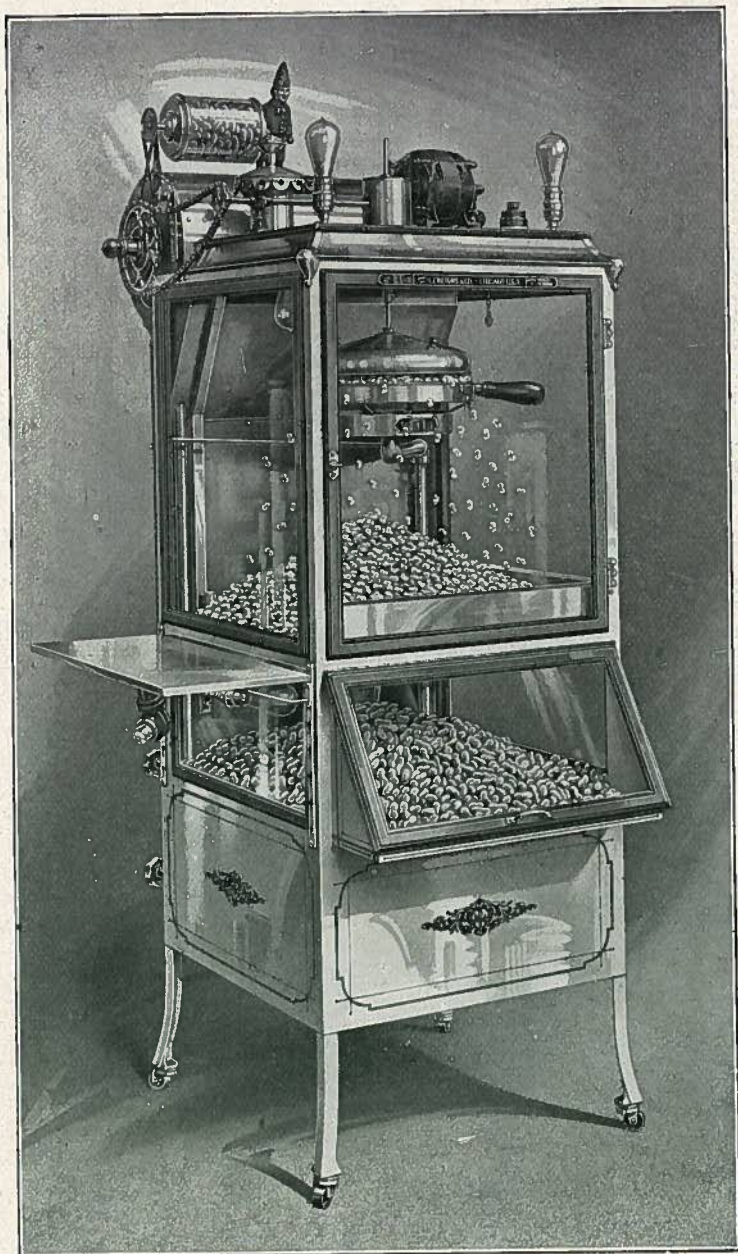
**Frame Dimensions**:—24 inches square; Height 67½ inches to top of roasting cylinder; **Weight**: (machine only) 215 pounds. Mounted on casters.

**Simple, Reliable and Attractive**, this machine is of greater capacity and a better Dividend Earner than other makes of machines costing double the money.

Unequaled by any other machine on the market of similar price, this model will quickly earn its cost in any reasonable location.

**See Price List for Price and Installment Terms.**





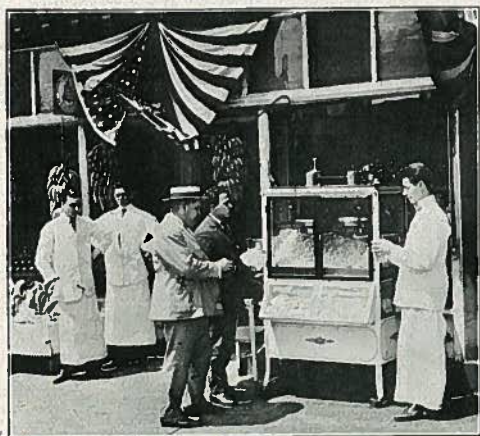
***Enlarged No. 6—Special Finish***

***Note***

***This machine can be supplied with steam engine in lieu of electric motor for power at same price.***



## *Enlarged No. 6—Double Popper Special Finish*



This machine is of the same general design as the Enlarged No. 6 Special Finish Corn Popper shown on page 16 of this catalogue, only it is equipped with double poppers of maximum capacity. It is especially adapted for locations where a large capacity is required and enables the operator to handle a rush business.

The popper case has glass on all four sides and top is finished as shown in cut on next page.

Popper case bottom and Peanut Compartment efficiently heated.

Beautifully decorated. Finished in White Enamel. Wired for electric lights as shown. All electric light wires encased in metal moulding.

Adjustable shelf on left is very convenient and easily detached.

Electric Motor Drive. Option of either Gas or Gasoline Fuel.

Frame Dimensions—24 inches by 36 inches. Height to top of motor, 67 inches. Nickel plated trim.

An attractive and durable machine which will give satisfaction where maximum output of pop corn is necessary.

**See Price List for Price and Installment Terms.**





*Enlarged No. 6—Double Popper  
(Special Finish)*



# **Standard No. 6—Electric Power**

## **Corn Popper and Peanut Roaster**

### **White Enamel Finish**



An Electric Power Model of our most popular low priced machine—especially adapted to small towns or crowded quarters.

Several thousand steam machines of this design are earning big dividends for their owners throughout the country.

All details are carefully designed.

Popper case and peanut compartment are efficiently heated, thus keeping stock hot and crisp.

Corn Popper is smaller in size, but of the same principle as our larger machines. Capacity about 70 one-pound sacks per hour.

Peanut Roaster capacity, 10 pounds, bicycle chain driven with dis-engaging clutch and tester for trying peanuts while roasting. Peanuts dump directly into heated compartment under popper case without removing roasting cylinder from its bearings.

#### **Electric Motor Drive—Gas Fuel.**

Option of Gasoline Burners if desired—regularly equipped with Gas burners unless otherwise specified.

Four electric light sockets are installed—two on top of machine and one each in popper case and peanut compartment.

Brass and copper trim natural finish, highly polished.

Corn Separator is supplied for removing un-popped kernels.

Finish—White Enamel, beautifully decorated.

Frame Dimensions: 20 inches square; 64 inches high to top of roasting cylinder. Weight 185 pounds without crate.

Has many of the features of our larger and more expensive machines and is far superior to any other machine on the market of equal price.

**See Price List for Price and Installment Terms.**

#### **Note**

*This machine can be supplied with steam engine in lieu of electric motor for power at same price.*





***Standard No. 6—Popper and Roaster  
(White Enamel Finish)***



## *Enlarged No. 6—Corn Popper Only—Special Finish*



This attractive and serviceable machine is of the same general design and dimensions as our Enlarged No. 6 Machine shown on page 11 only It Has No Peanut Roaster. The popper case has glass on all four sides and the top is finished as shown in accompanying cut. The heated peanut display compartment under popper case is retained, thus enabling one to handle and sell peanuts which are roasted elsewhere.

Popper case bottom and Peanut Compartment efficiently heated.

Painted in White Enamel. Wired for Electric Lights as shown.

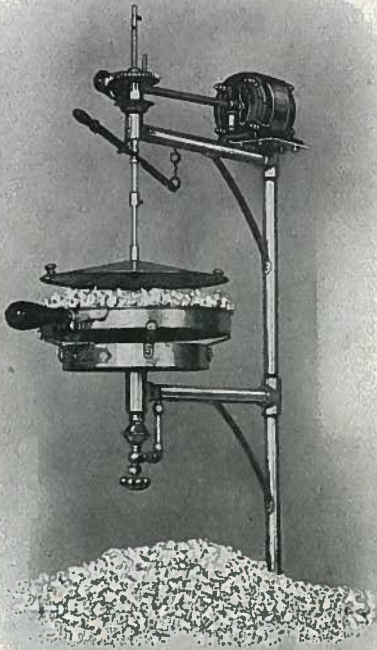
A most handsome, attractive, and satisfactory machine which is bound to prove a big money maker in most any location.

Electric Motor Drive. Option of either Gas or Gasoline Fuel.

Frame Dimensions—24 inches square. Height to top of motor 68 inches. Weight 190 pounds. Nickel Plated Trim.



## **Model 21—Wall or Window Popper**



An attractive and economical outfit especially designed for Show Windows or other restricted space. Nickel Plated standard extends to floor with suitable supporting flange and cleats. **Corn Popper** is of large size and capacity—direct driven by worm gears, attached to motor shaft. Gas is conducted to burner under popping pan through nickel plated standard. Pop-corn Receiving Pan of reasonable dimensions is included. Bottom of said pan is efficiently heated by means of a water tank attached thereto, under which is a single gas burner thus keeping the corn crisp and hot.

**Electric Motor Drive.**

**Gas Fuel.**

Gasoline burners can be supplied at reasonable extra cost. Gas Fuel equipment is standard and supplied unless otherwise specified.

As this outfit is generally installed in a show window, no base is provided. To install, simply cut a hole in window flooring to receive flange of pop-corn receiving pan. Popper standard can be cut to desired length.

Simple and Efficient, this machine will prove a big attraction in your show window and earn handsome profits. A child can operate it.

See Price List for Price and Installment Terms.

# ***Model 400—Peanut Roaster and Corn Popper***

An exceptional machine of handsome design and **Large Capacity**—especially adapted to Department Stores, Pop-Corn Shops, or other “Indoor Locations.” All steel frame construction, designed and built to conform with the rules and regulations of the National Board of Fire Underwriters. Inspected and Approved by the Underwriters Laboratories, Inc.

**Double Corn Poppers**—of maximum capacity same as used on our largest and most expensive Wagon Machines. Operating Mechanism all enclosed within the sanitary nickel plated standard.

**Electric Motor Power—Gas Fuel.** Gasoline Fuel extra.

**Power Transmission**—shaft and gear drive in conjunction with bicycle chain and sprockets.

**Heating System**—Nickel Plated copper popper case bottom is heated by hot water circulation, supplied by separate copper heating tank under Hot Peanut Drawer. One small gas burner under this tank causes a circulation of hot water, which keeps the corn and peanuts **Always Hot**. Very economical and efficient. **No Steam Pressure is Generated**, as the apparatus is vented to the open air.

**Peanut Roaster Capacity**—20 pounds.

**Hot Peanut Drawer**—a generous stock of peanuts can be kept thoroughly heated in drawer (11x22) directly over boiler or heating tank.

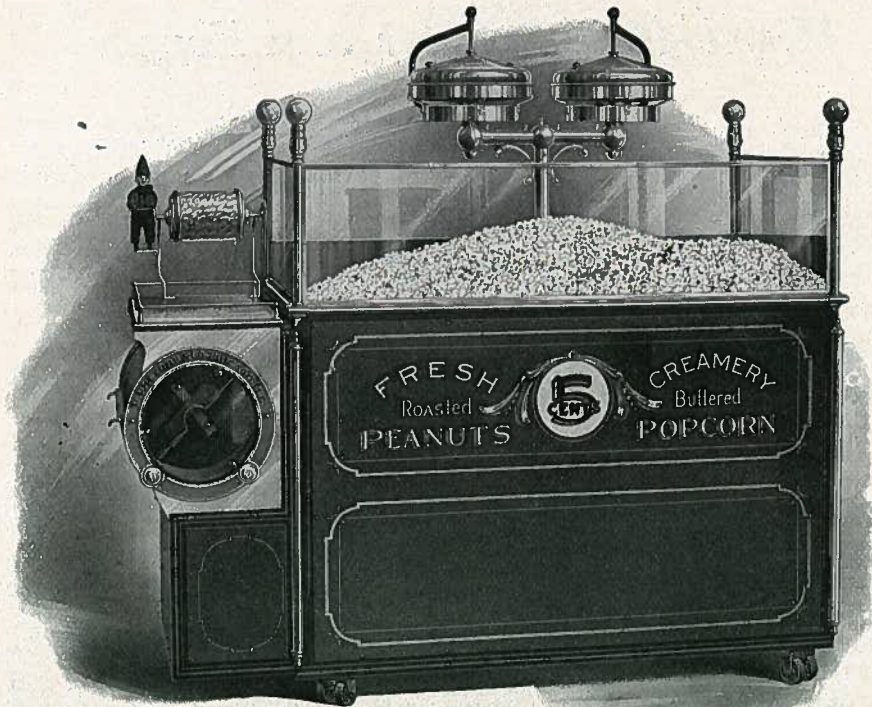
**Stock Drawers**—three in number afford ample storage facilities for raw pop-corn, peanuts, etc.

**Electric Lights**—four electric light sockets surmount popper case corner posts. All electric light wires run in metal moulding.

**Brass Trim**—of exclusive design, carefully machined from solid brass castings. Brass tubing is of heavy gauge, highly finished. All trim is Nickel Plated. Option of Polished Brass.

**Corn Separator**—is supplied for removing un-popped kernels.





### ***Model 400—Popper and Roaster***

**Fuses, Switches, etc.,** are enclosed in steel panel box.

**Painting**—Is of the very highest order, artistically striped in gold leaf and color. Standard color: Crimson Red with black and gold leaf striping. Other colors to order.

**Dimensions**—66 inches long; 31 inches wide; 63 inches high to top of poppers. Mounted on universal casters. Weight, 475 pounds.

This machine is especially popular with Five and Ten Cent Stores.

**See Price List for Price and Installment Terms.**

### ***Note***

If Peanut Roasting Cylinder is not wanted, same can be omitted, and a reasonable credit allowed from list price of machine.

As an additional attraction when so desired, we can at a reasonable extra cost mount one of our full Nickel Plated Steam Engines on shelf over Roasting Cylinder and propel same by means of Electric Motor.

Put a Model 400 to work in your store, and see it earn a harvest of nickels and dimes that will make the limited space it occupies, the most productive of any equal area about your premises.

## **Model 401—Roaster and Popper With Case**

General design and specifications of this machine are similar to our Model 400 shown on page 13, excepting that the popper case is completely enclosed as shown in illustration. The "double" corn popper is of large capacity and enables one to care for a rush business with dispatch and all around satisfaction. Just the outfit for Ball Parks, Fair Grounds, Theatre Lobbies, Department Stores, etc., which require an attractive machine of maximum capacity. Built to conform with the rules and regulations of the National Board of Fire Underwriters—Inspected and Approved by the Underwriters Laboratories, Inc. All steel frame construction throughout.

Sheet steel top or roof painted to harmonize with general finish. Wired for four electric lights at roof corners as shown. Electric wires run in steel moulding. Exclusive heavy brass trim—Nickel Plated. Bevel edge plate glass throughout. Double hinged doors at rear.

**Heating System**—Nickel plated copper Popper-case bottom is heated by hot water circulation. **No Steam Pressure is Generated**, as the apparatus is vented to the open air.

**Hot Peanut Drawer**—a generous stock of peanuts can be kept thoroughly heated in drawer directly over hot water heating tank.

**Extra Stock Drawers** afford ample storage facilities for raw corn, peanuts, etc. Peanut Roasting cylinder is of 20 pounds capacity.

**Fuses, Switches, etc.**, are enclosed in steel panel box.

**Painting** is of the very highest order, artistically striped and lettered in gold leaf and color.

**Electric Motor Power—Gas Fuel.**

**Gasoline Fuel** (pressure system) extra. **Corn Separator** is supplied for removing un-popped kernels. This model can be operated either inside the store or out of doors.

**Dimensions**—65 inches long; 31 inches deep; height to top of popper case about 7 feet. **Weight** about 525 pounds.

**See Price List for Price and Installment Terms.**





**Model 401—Roaster and Popper—With Case**

**Note**

As an additional attraction when so desired, we can at reasonable extra cost, mount one of our full Nickel Plated Steam Engines on shelf over Roasting Cylinder and propel same by means of Electric Motor.



## *Special Store Front Outfits*

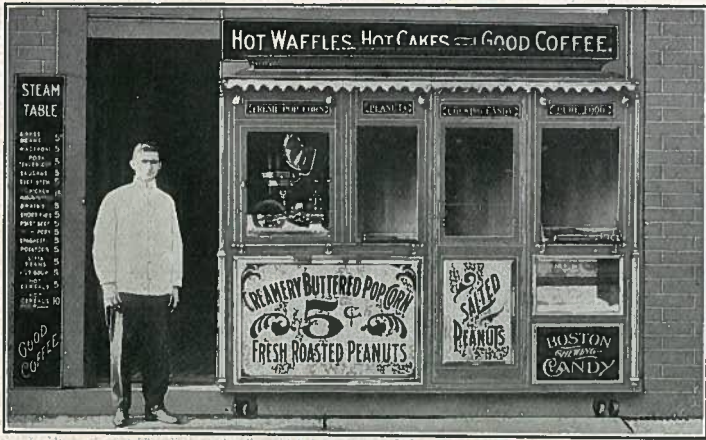
Accompanying illustrations show special “**Store Front Outfits**” complete in all details, intended to be placed inside the building line. Machines illustrated are adapted to outdoor as well as indoor use, and the design can be modified to meet existing conditions. Ample shelving is provided for candies, gum and kindred stock. Sash are provided with drop counters, etc., for serving trade.

Machines along these lines are especially valuable in restricted locations, and we will gladly furnish suggestions and quotations for special equipment of this nature, which is becoming very popular with confectioners and others in exclusive locations. Built to order only.

Motive Power—option of either Electricity or Steam. Fuel, Gas or Gasoline. Where electricity is used, the engine may be retained as an attraction if desired and propelled by the electric motor.

Write for additional information.





*Special Store Front Outfits*

## ***Model 550—Electric Power Roaster and Corn Popper***

A handsome and compact machine suited to either "indoor" or outside use.

Has a large capacity of both Pop-corn and Peanuts, and is built in Electric and Steam Power Models.

Frame built entirely of steel; handsome nickel plated engine and trim. All steel top, wired for electric light at each corner with transparent flash glass sign on each side of roof. Chip plate glass sign under popper case lettered as desired.

**Double Corn Popper.** Improved Special type, of large capacity. Nickel plated copper popper Case Bottom, and Hot Peanut Drawer, heated by hot water circulating system.

Bevel edge plate glass throughout.

**Electric Motor Drive—Gas Fuel.** Gasoline Fuel equipment extra.

An unusually attractive and durable machine which is a big money maker.

**Dimensions**—frame 30 inches deep (front to rear) 6 feet long, 7 feet 4 inches high. Extreme width of roof 38 inches. Capacity of Roasting Cylinder 20 pounds. Write for additional details.

**See Price List for Price and Installment Terms.**

### ***Note***

Steam Engine shown in illustration is not standard equipment on Electric Power Machine of this model—but may be supplied as an additional attraction (when so desired) at a reasonable extra cost—engine being propelled by electric motor.





**Model 550—Electric Power Peanut Roaster and Popper**  
Engine shown in cut is special equipment

## **Model 20—Special Counter Popper**



A very attractive and popular corn popper for Counter or Show Window use. This machine is a great favorite with Department Stores, 5 and 10c Stores, Confectioners, etc., who appreciate its simple and compact design. Easily moved from one place to another, it can be used in the show window as an attraction today, and elsewhere about the store tomorrow.

Simply clear a space 26x30 inches, put this machine to work and see it earn greater profits than any other equal area about the store. **A Complete Unit in Itself**, it can be quickly and easily moved to the Ball Park, Fair Grounds, Church Festival or other gatherings on short notice.

Corn Popper is of large size and capacity.

Entire Popper-case Bottom is of nickel plated copper efficiently heated by means of hot water circulation.

Ornamental brass and copper trim highly finished and nickel plated.

**Electric Motor Drive—Gas Fuel.**

Gasoline Fuel Equipment extra.

Dimensions—30 inches long; 26 inches deep; 50 inches high to top of case.

One must see this machine to appreciate its exceptional advantages and beauty—a money maker of unusual merit; it is bound to please.

**See Price List for Price and Installment Terms.**

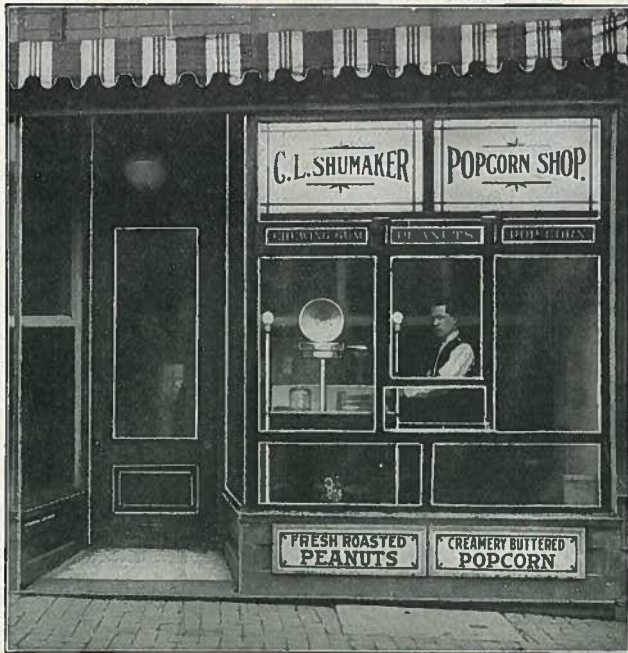




**Model 20—Special Counter Popper**

АТОМ 57

## *Special Window Fronts*

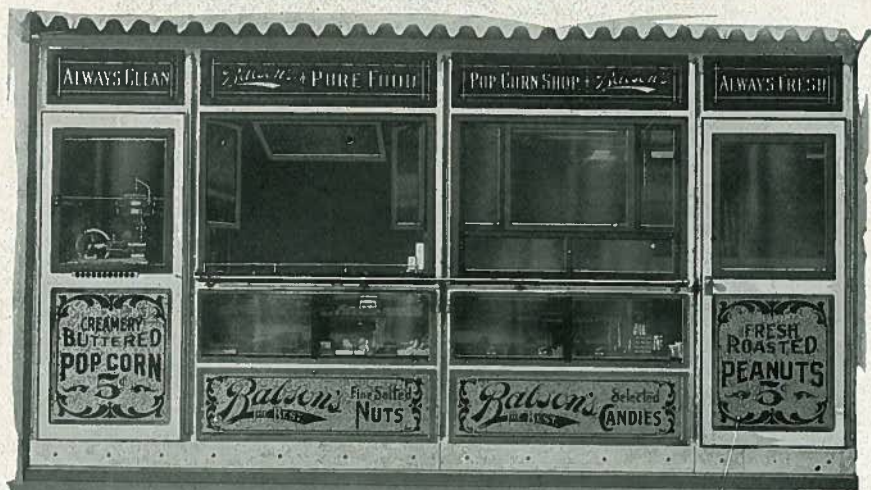


Above cut illustrates a special "Window Front" installation used in conjunction with one of our regular stock machines. The store front or window is removed and a special frame fitted with suitable sash, drop shelving, etc., inserted in its place.

As a rule this type of equipment is less expensive than the design shown on page 17, as generally only the front panel is required; and this can be modified in elaborateness to conform with wishes of customer.

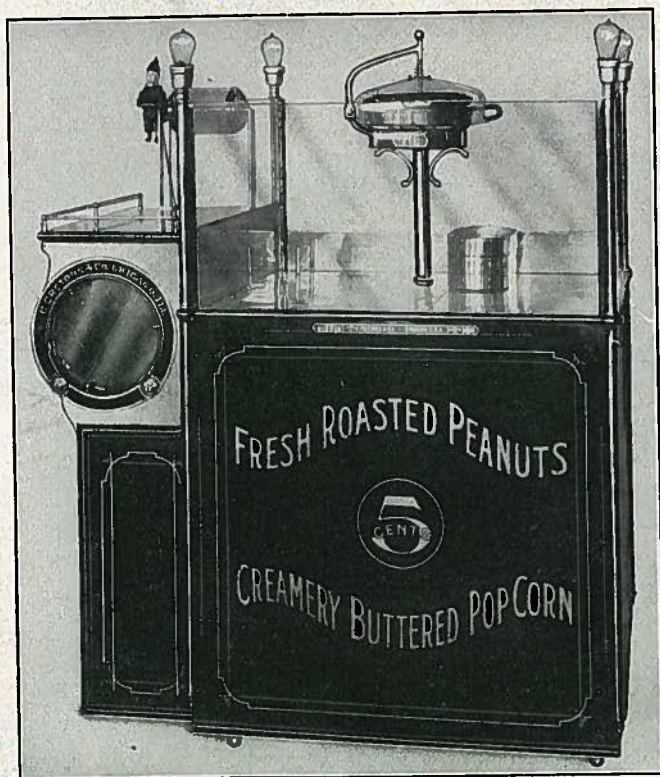
Additional information on request.





*Special Window Fronts*

## Model 30—Peanut Roaster and Corn Popper



A shorter Model 400—fills the bill nicely for show window or store where but a single corn popper of good capacity is desired, in conjunction with peanut roaster. Nickel plated copper bottom of popper case, and Hot Peanut Drawer are efficiently heated.

Brass trim highly finished and nickel plated. Wired for electric lights as shown. Peanut Roaster capacity 20 pounds.

### Electric Motor Drive—Gas Fuel.

Gasoline fuel equipment                      extra.

Handsomely painted and decorated. Write for additional information.

Dimensions: 51 inches long; 31 inches wide, 63 inches high to top of poppers.

See Price List for Price and Installment Terms.







