

# C. CRETORS & Co.

ESTABLISHED 1885



Reg. U. S. Pat. Off.

CHICAGO, ILL.

1925



# Dependable for 40 years

*A Style for Every Location  
-A Price for Every Purse*

**No City Too Large**

—

**No Town Too Small**

## INDEX

Page No.		
1 — Index	15 — Improved Model 401 — Popper and Roaster With Case	
2 — No. 6 "Earn-More" Machine	16 — Booth Model — Popper and Roaster	
3 — No. 6 "Earn-More" Description	17 — Sidewalk Special — Popper and Roaster	
4 — Junior Counter Model Roaster	18 — Special Store Front Outfits	
5 — Educator Counter Model Popper	19 — No. 6 "Earn-More" — Steam Power	
6 — Graduate Counter Model Popper	20 — No. 2 Wagon	
7 — Ideal Counter Model Corn Popper and Peanut Roaster	21 — Improved No. 2 Wagon With No. 1 Engine	
8 — Standard No. 6 — Electric Power	22 — No. 1 Wagon	
9 — No. 6 "Earn-More" All Electric Corn Popper Only	23 — Improved No. 1 Wagon Model "B"	
10 — Eclipse Model — All Electric Popper and Roaster	24 — Improved No. 1 Wagon Model "A"	
11 — Utility Store Model Popper	25 — Improved No. 1 Wagon Model "A" Double Popper	
12 — DeLuxe Model Corn Popper With Peanut Roaster	26 — Improved Special Model "C"	
13 — Enlarged No. 6 Double Popper	27 — Improved Special Model "D"	
14 — Improved Model 400 — Popper and Roaster	28 — Automobile Models	
	29 — How Cretors Machines are built.	
	30 — Peanut Warmer. No. 8 Roaster	
	31 — Cretors Policy Toward Owners	
	32 — Motive Power	

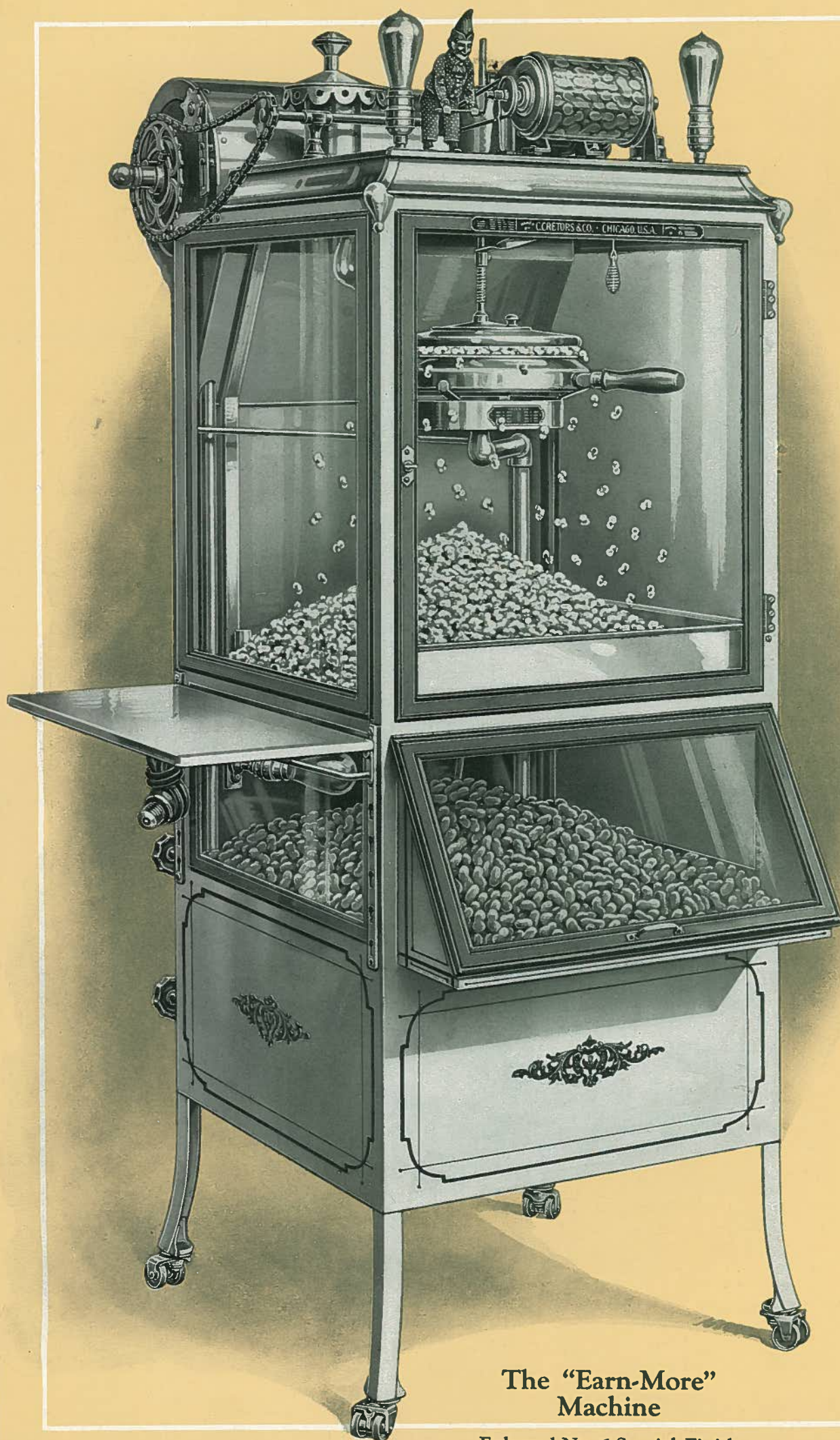


**CHICAGO, ILL.**

Established 1885  
22nd & Jefferson Sts.

**C. CRETORS & CO.**





The "Earn-More"  
Machine

Enlarged No. 6 Special Finish



# Put This Machine to Work—

Earn From \$500 to \$3000 in New Profits Yearly

Produces an immediate **Cash Profit**—from a nominal investment.

Expands your business—**Attracts New Trade**—Sells Itself.

Peanuts and Pop-corn are always in Season—both Winter and Summer.

Will help pay your Rent and Overhead.

Every person who enters or passes your place of business is a likely pop-corn customer.

Occupies but 24 x 24 inches of Floor Space—Does Not Require Extra Help.

Bank your Profits each day—No Dead stock or Credit.

**Each dollar in Cretors Pop-corn Sales means about 65 cents NET PROFIT FOR YOU.**

## No. 6 "Earn-More" Model Popper and Roaster

**T**HE sturdy design and simple construction of this popular Cretors Model is appreciated by all. It insures maximum service and satisfaction. We avoid the delicate and intricate mechanical parts which are a source of frequent trouble and expensive shut-down on machines of different manufacture.

This machine is quickly and easily cleaned—others, of the complicated type, require about two hours' labor each day to maintain.

**Output**—140 to 160 one pound bags or 280 to 320 one-half pound bags per hour of the world's best pop-corn. The popping pan is of the same size as our largest and most expensive machines.

**Peanut Roasting Capacity**—100 five cent bags per hour. The Roasting Cylinder is of 10 pounds capacity. Tester is provided for examining peanuts without stopping. Peanuts are dumped directly into heated compartment below popper case without removing roasting cylinder from its bearings.

Figuring on a ten hour basis, the machine is equal to producing 1600 bags of pop-corn, and 1000 bags of peanuts—about double the capacity of most machines.

**Another Important Feature**—This machine has large capacity when needed to care for a rush business, and yet will promptly supply customers with fresh corn at hours when trade is light.

**No Waiting for the popping plate to heat:** The Cretors Popper requires only about three minutes to complete a popping from time fire is lighted, therefore you can turn out several poppings while others are getting ready.

**Cretors Quality Pop-corn**—Pop-corn like other food, has a superior flavor if seasoned during the process of popping. This is a pioneer method of ours which has stood the "acid test" of time and revolutionized the pop-corn business. Forty years of success has proven our claim that in order to produce the most delicious pop-corn—the "every-kernel-seasoned-alike" kind —it must be popped

in butter and salt. No other pop-corn is so delicious or consistently good—it keeps the people coming back for more.

**Construction and Finish**—All-steel construction, no wooden cabinet to become shabby and unsightly after a few weeks' use.

**Weight**—Only 215 pounds. Supreme strength and durability.

**Of beautiful Finish**—In white enamel, glass and polished nickel plate, this machine makes a handsome and profitable addition to any store—regardless of how artistic or expensive the fixtures and surroundings may be. Mounted on casters, it is easily moved in or out of your store.

**Gas or Gasoline Fuel.**

**Display and Heating Compartments**—Merchandise attractively displayed is more than half sold. No one wants cold or half warm peanuts or pop-corn—this machine keeps both piping hot in large display compartments having glass on three sides.

**No Time Lost**—Cretors "Quality Pop-corn" is ready for immediate sacking and sale as it leaves the popping pan—without further buttering, salting or other manipulation. Conserves time and energy, enabling one to handle a large volume of trade with dispatch and all around satisfaction.

**Operating Cost—Most economical.** A few cents will cover the operating expense of this machine for an entire day. Other makes require so much electricity for their popping, roasting and heating elements as to seriously affect their earnings—perhaps you never thought of this very important item of operating expense. This Cretors machine consumes only one kilowatt of current in 13 hours, which, at the rate of 10 cents per kilowatt, costs less than one cent an hour for electricity. Gas or gasoline consumption is likewise economical.

"All Electric" Model shown on page 9.

"Steam Power" Model shown on page 19.

Write for Price and Easy Installment Terms  
The Cretors Way is Easy to Pay

EACH DAY BRINGS ITS DIVIDEND





## "Junior" Counter Peanut Roaster

**T**HIS attractive and practical machine is especially designed for use either on your Counter or in your Show Window.

**Brings you a New Profit — Attracts New Trade.** Supplies a popular demand.  
**Speedy and of Generous Capacity** — requires but minimum space.

The tempting aroma of roasting peanuts is hard to resist.

Finished in White Enamel and Polished Nickel Plate.

**Attach to an ordinary light socket, anywhere, switch on the current, and Add A New Profit to Your Store.**

### — Specifications —

**ELECTRIC MOTOR DRIVE — ELECTRIC OR GAS FUEL**

**Operates From An Ordinary Light Socket**

**Simple — Efficient — Durable**

Shaft and Protected Cut Gear Drive throughout. No belts or chains.

**Roasting Capacity**—8 lbs. per roasting. Easily Installed.

Special Electric Heating Element under base—keeps peanuts hot.

**Peanut Display Compartment**—Capacity approximately 16 lbs. or 80 average size 5c bags.

**Frame**—All Steel Construction—Supreme Strength and Light Weight.

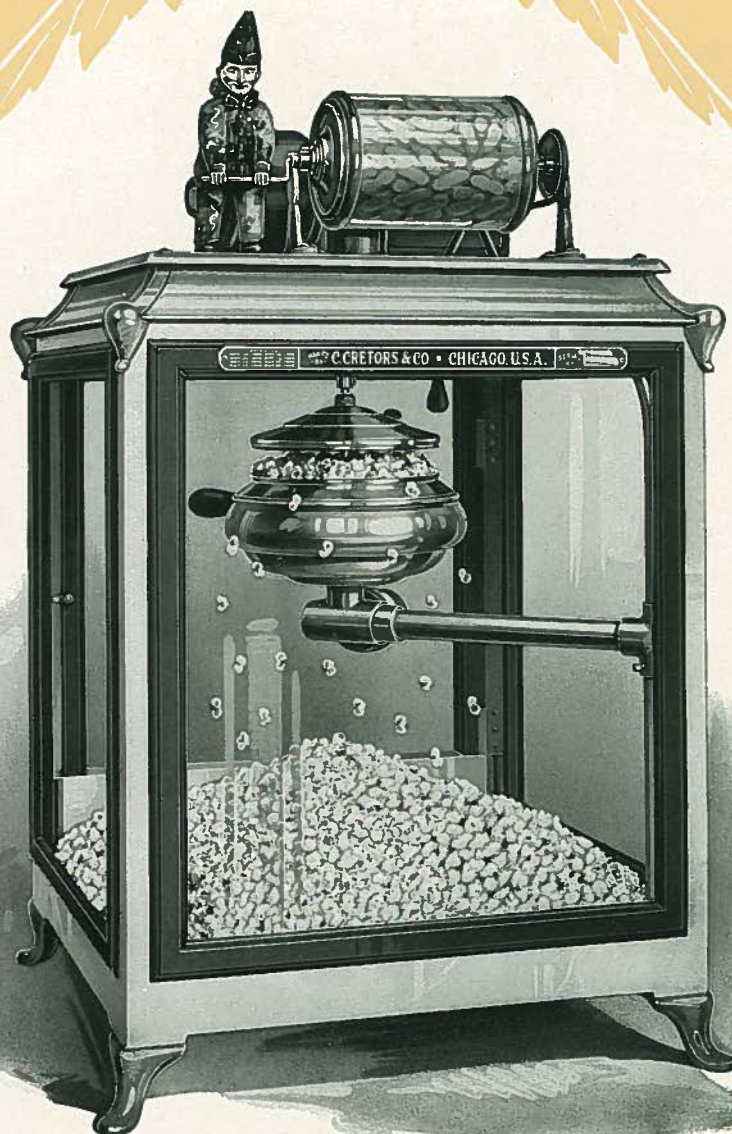
**Dimensions:** Height over all 25 inches. Peanut Display Compartment 22x22x9 inches. **Quick Roasting Feature.**

**IT PAYS FOR ITSELF**



Minimum Cost

Maximum Value



## "Educator" Counter Model Popper

**OF** WONDERFUL Simplicity and compactness, this machine is the very essence of Economy and exceptional value.

**Attractive and Durable**, this model is built to educate merchants "everywhere" as to the profit possibilities of the pop-corn business.

**Of Cretors Quality throughout — yet cheap in price.** Note the absence of all complicated parts — insuring "long life" and dependability.

**No extra clerk hire required — a child can operate it.**

**Sell Only 80 Bags Daily — Bank \$1000 New Profits Annually.**


**On Your Counter — out of the way — it will pay every day.**

### — Specifications —

**Power**—Electric Motor. Direct Gear Drive.

**Electric Light** in Popper Case.

**Fuel**—City Gas (Standard).

 **Electric Popping Element** in lieu of gas supplied at reasonable extra cost.

**Electric Heating Element** under popper case keeps corn hot.

**Generous Capacity** of the World's Best Pop-corn.

**Each Kernel Seasoned Alike** by

Cretors Original Process.

**Quick Popping Feature** (no waiting for popping plate to heat).

**Finish**—White Enamel and Nickel Plate.

**Frame**—All Steel Construction 20" wide, 20" deep, by 37" high over all.

Illustration shows Electric Popper

**SOLD ON INSTALLMENTS — IT PAYS FOR ITSELF**

**A BUSINESS BUILDER FOR YOU**





**Compact**

**Reliable**

## **"Graduate" Counter Model Popper**

**A**N EXCEPTIONALLY popular machine of Low Cost — right up to the minute in Design and Efficiency.

Just the machine to earn a handsome New Profit for you in the show window or on a counter.

**Attractive, Durable and of Generous Capacity.**

**Each dollar in Cretors Pop Corn Sales nets you 60 to 70 cents profit.**

**Brings new customers to your store.**

### **— Specifications —**

**Power**—Electric Motor. Direct Gear Drive.

**Fuel**—City Gas (Standard).

**Electric Light** in Popper Case.

**Electric Popping Element** in lieu of gas supplied at reasonable extra cost.

**Special Electric Heating Element** under popper case keeps corn and peanuts piping hot.

**Peanut Display Compartment** under popper case.

**Quick Popping Feature**—Generous Capacity of the World's Best Pop-corn.

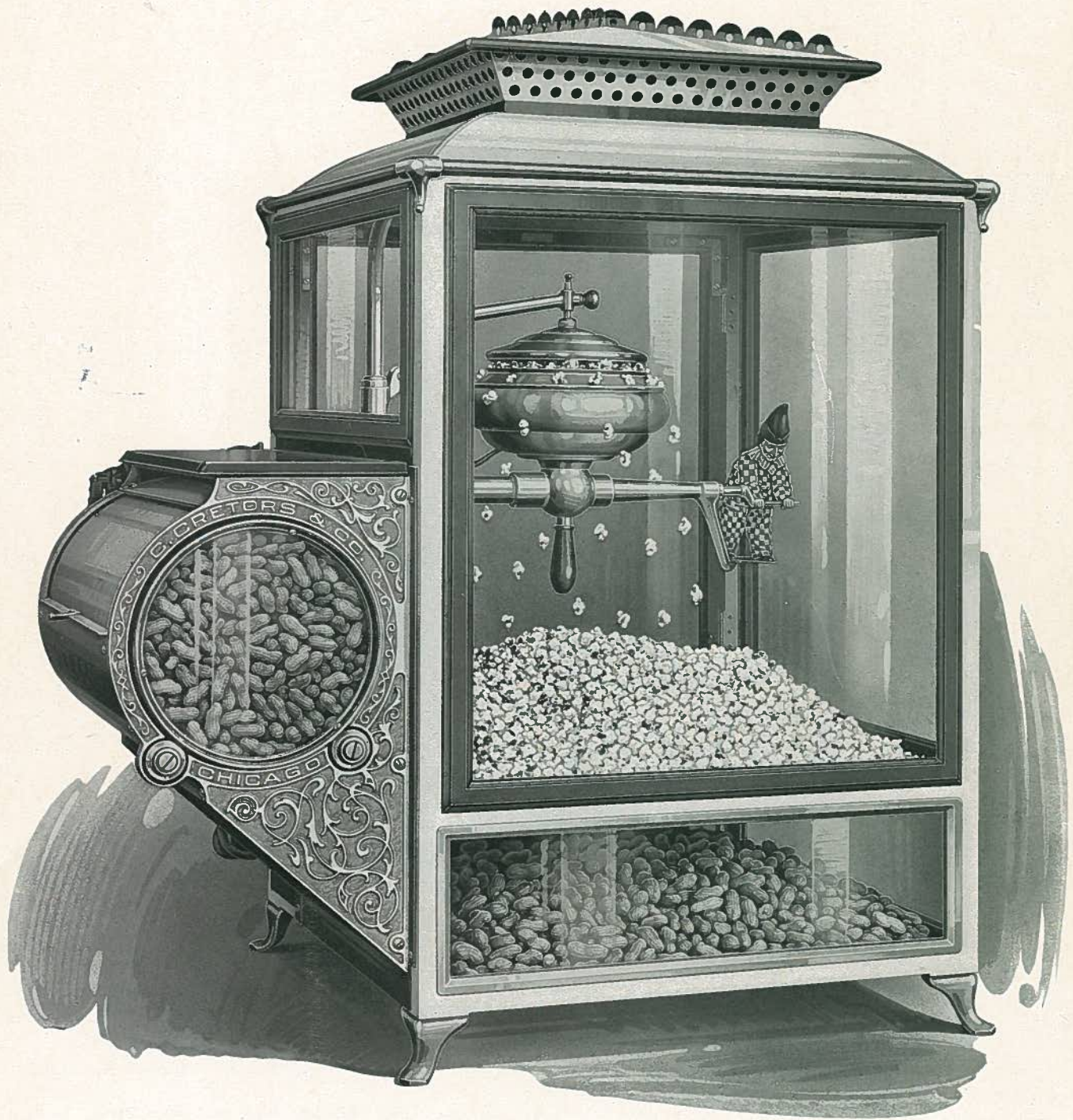
**Finish**—White Enamel and Nickel Plate.

**Frame**—All Steel Construction 24" wide; 24" deep; 47" high over all.

**Illustration shows Gas Type Popper.**

**CRETORS WAY IS SURE TO PAY**





## “Ideal” Counter Model — Popper and Roaster

**W**ITHOUT question, the most handsome, and practical Counter Machine on the market. Converts present non-productive counter or window space into a New Profit Department. Worth its cost as an advertisement alone—will popularize your store.

### — Specifications —

Electric Corn Popper—Inverting Type.  
 Electric Peanut Roaster—(Option of Gas Fuel).  
 Electric Motor Drive: Electric Light Inside Case.  
 Shaft and Cut Gear Drive throughout.  
 Special Electric Heating Element under Popper Case keeps corn and peanuts hot.  
 Generous Capacity of the “World's Best Pop Corn.”

Quick Popping Feature (Option of Gas Fuel).  
 Peanut Display Compartment under Popper Case.  
 Finish—White Enamel and Nickel Plate.  
 Harmonizes with the most Elaborate Fixtures.  
 Sturdy Design and Simple Construction—Insures Maximum Service and Dependability.  
 Dimensions—Popper Case 24" wide x 24" deep.  
 Width, including Roaster, 36". Total Height 44"

**THE MARGIN OF PROFIT IS ENORMOUS**





## Standard No. 6 — Electric Power Corn Popper and Peanut Roaster

**T**HIS Electric Power Model is a popular low priced machine — especially adapted to small towns or crowded quarters.

Several thousand steam machines of this design are earning big dividends for their owners throughout the country.

All details are carefully designed.

Popper case and peanut compartment are efficiently heated, thus keeping stock hot and crisp.

Corn Popper is smaller in size, but of the same principle as our larger machines. Capacity about 110—5c bags per hour.

Peanut Roaster capacity, 10 pounds per hour, with tester for trying peanuts while roasting. Peanuts dump directly into heated compartment under popper case without removing roasting cylinder from its bearings.

**Electric Motor Drive** with option of Gasoline Burners if desired — regularly equipped with Gas burners unless otherwise specified.

Brass and copper trim nickel finish, highly polished.

Corn Separator is supplied for removing unpopped kernels.

Finish — White Enamel, beautifully decorated.

Frame Dimensions: 20 inches square; 64 inches high to top of roasting cylinder. Weight 185 pounds without crate.

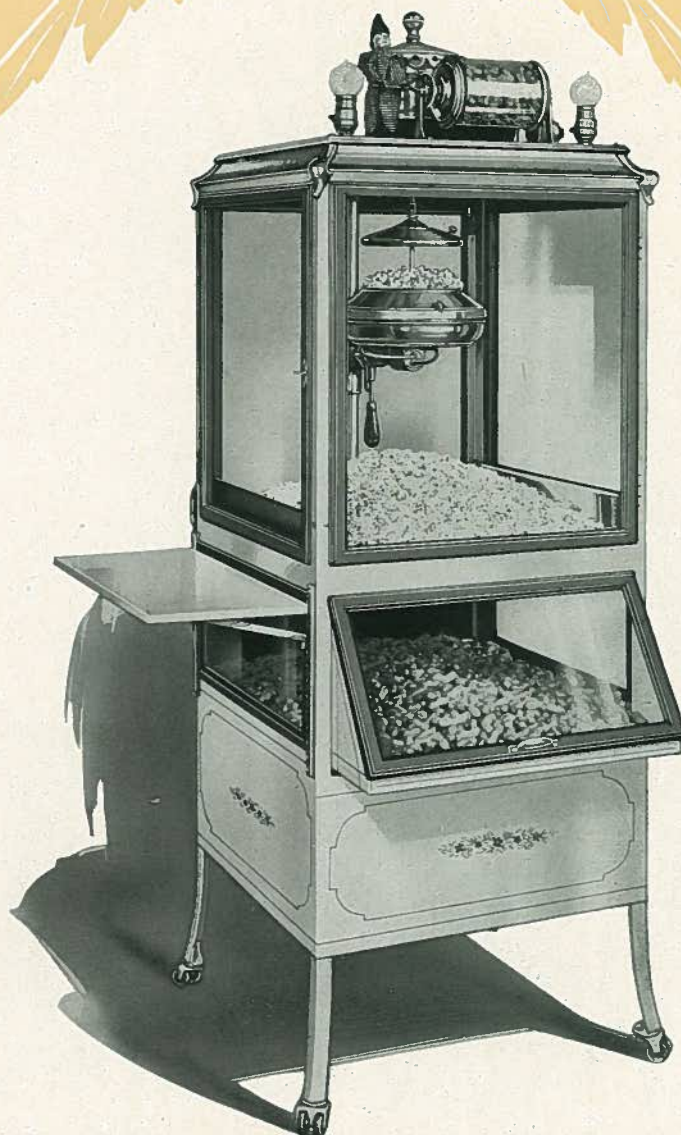
Has many of the features of our larger and more expensive machines and is far superior to any other machine on the market of equal price.

This machine can be supplied with steam engine in lieu of electric motor for power.

Price and Installment Terms on Request.

**A CRETORS WILL POPULARIZE YOUR STORE**





## No. 6 "Earn-More" — Corn Popper Only

"All Electric" or Gas Fuel

**H**ANDSOME and compact machine adapted to either "indoor" or outdoor use. Attractive and serviceable of the same general design and dimensions as our popular No. 6 "Earn-More" Machine (illustrated on page 2) **excepting that the Peanut Roaster is omitted.**  
**Built in "All Electric" — Gas or Gasoline Fuel.**

Popper Case has glass on all four sides.

**Heated Peanut Display Compartment** under popper case is retained—thus enabling one to handle peanuts which are purchased previously roasted.

**Electric Popper — Inverting Type.**

**Gas Fuel Popper — (Optional).** Removable pan type.

**Electric Motor Drive.** **Electric Lights** inside case and on top as shown.

Popper Case Bottom and Peanut Compartment efficiently heated.

**Finish — White Enamel and Polished Nickel Plate.**

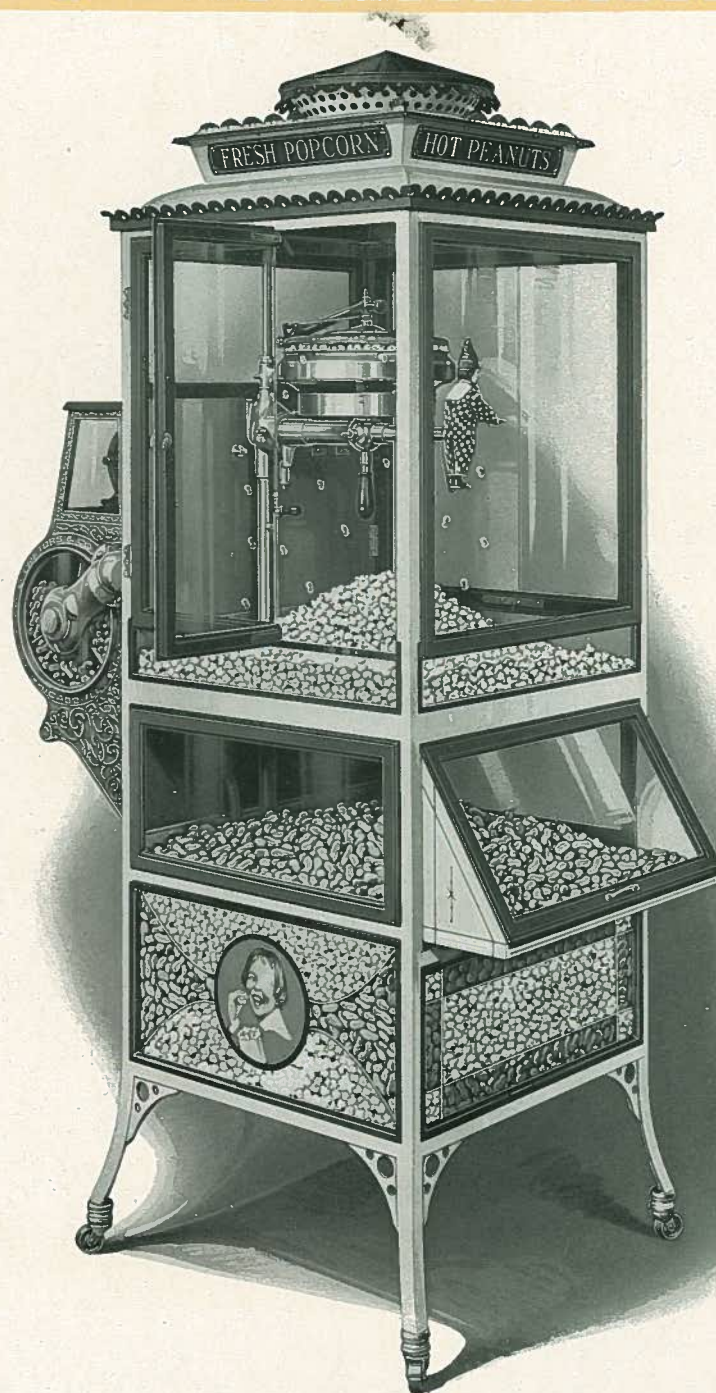
**Frame Dimensions:** 24" square. Height to top of Motor 68". Weight 190 lbs.

**An attractive and highly satisfactory machine which is bound to prove a big money maker in most any location.**

Cut shows "All Electric" Machine

**A WONDERFUL OPPORTUNITY FOR YOU**





## “Eclipse” Model — “All Electric”

With or Without Peanut Roaster

**T**HIS beautiful new model is the “last word” in attractiveness and superior design. The culmination of our 40 years experience — It Speaks For Itself.

### — Specifications —

Electric Corn Popper—Inverting Type—(Option of either Gas or Gasoline Fuel).

Electric Peanut Roaster. (Option of Gas or Gasoline).

Also Built “Without” Peanut Roaster. (Corn Popper Only).

Electric Motor Drive. Electric Light Inside Popper Case.

Automatic Power Corn Separator. Mechanical Toy Figure.

Shaft and Cut Gear Drive throughout.

Popper Case Bottom and Peanut Compartment efficiently heated by electricity.

Special Corn and Peanut “Display Signs” on three sides of base.

Illuminated, Transparent colored glass Signs in top.

Large Capacity — Latest Design Corn Popper — Quick Popping Feature.

Finish—White Enamel and Polished Nickel Plate.

Dimensions: Popper Case 24x24 inches. Total Height 74 inches.

The many valuable and exclusive features embodied in the design of this machine place it far in advance of all competition.

Additional Information On Request.

**SPEED—ECONOMY—MINIMUM WASTE**





## “Utility” Store Model Popper

**ONE** must really see this exceptional machine to fully appreciate its beauty and many exclusive trade-winning features.

**Of Large Capacity, Efficient and Compact, the “Utility” Model is A Real Money Maker.** Especially popular with Department Stores — Pop-corn Shops — Five and Ten Cent Stores, and other “indoor” locations.

**Adds A New Profit Department To Your Business — Stands Anywhere.**

### — Specifications —

**Corn Popper**—Large Capacity, Latest Style Inverting Type.

**Power:** Electric Motor. Electric Light in popper case.

**Fuel:** “All Electric”. (Gas or Gasoline optional.)

**Popper Case Bottom.** Efficiently heated by electricity. (With gasoline fuel—Hot Water Heat.)

**Automatic Corn Separator.** Shaft and gear drive.

**Quick Popping Feature**—Simple and Efficient.

**Finish:** Mahogany or White Enamel. Other colors optional.

**Special Storage Drawers** for reserve stock.

**Frame**—All Steel Construction.

**Dimensions:**—Length 48". Depth 24". Height 74".

**Popper Case** 24"x24". **Display Compartment** 24"x-24". **Counter Line** 32".

WRITE FOR ADDITIONAL INFORMATION

**A NEW DEPARTMENT — INCREASED PROFITS**





## DeLuxe Model Corn Popper with Peanut Roaster

**O**NE of our very latest and most attractive models — right “up-to-the-minute” in design and trade-winning features.

Operated by Electric Motor with either **Gas** or **Gasoline Fuel**, it is the very embodiment of efficiency and a credit to any establishment.

This machine is fitted with a power driven **Peanut Roasting Cylinder** of about 14 pounds capacity — thus enabling the owner to roast his own peanuts and have a fresh stock of the same at all times.

Shelf over Roasting Cylinder will be found very convenient for displaying package goods.

Two exterior electric lights in front under roof — one additional inside popper case. Can be equipped with either **Gas** or **Gasoline Fuel**.

**Dimensions**—Length 45 inches; depth 26 inches; height 6 feet 8 inches. Weight (machine only) 420 pounds. Approved by the Underwriters Laboratories.

A highly Successful machine which will quickly earn its cost in any reasonable location. **Price and Installment Terms on Request.**

**THE DEMAND IS ESTABLISHED**





## Enlarged No. 6 — Double Popper

### Corn Popper Only

**T**HIS machine is of the same general design as the Enlarged No. 6 Special Finish Corn Popper shown in the front of this catalogue, only it is equipped with double poppers of maximum capacity. It is especially adapted for locations where a large output is required and enables the operator to handle a rush business.

The popper case has glass on all four sides.

Popper case bottom and Peanut Compartment efficiently heated.

Beautifully decorated. Finished in White Enamel. Wired for electric lights as shown. All electric light wires encased in metal moulding.

Adjustable shelf on left is very convenient and easily detached.

Electric Motor Drive. Option of either Gas or Gasoline Fuel.

**Frame Dimensions**—24 inches by 36 inches. Height to top of motor, 67 inches. Nickel plated trim.

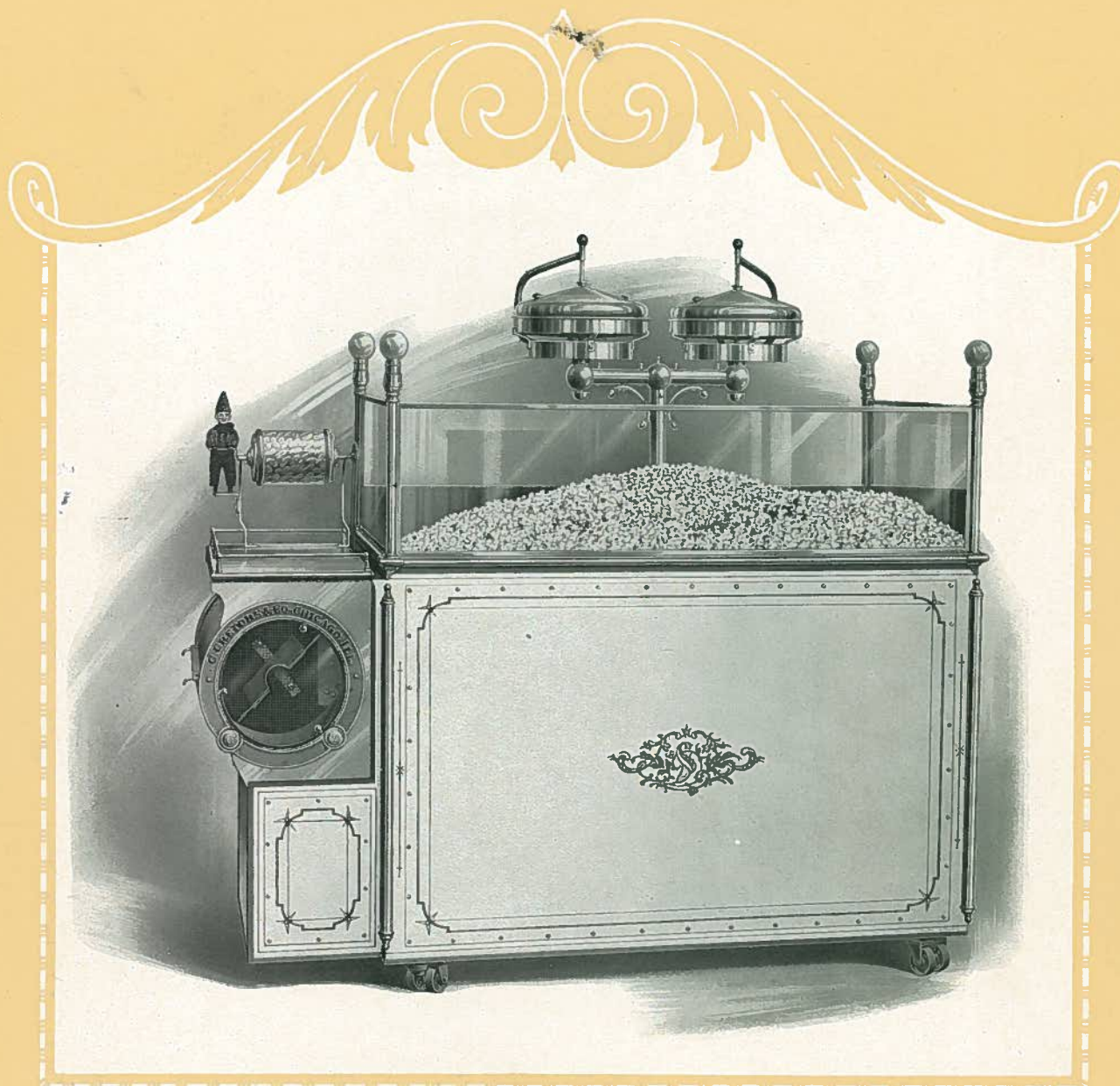
Peanut Roaster can be supplied as special equipment on this model.

An attractive and durable machine which will give satisfaction where maximum output of pop-corn is necessary.

**Price and Installment Terms on Request.**

**EVERYBODY ENJOYS CRETORS POP-CORN**





## Improved Model 400 — Popper and Roaster

**A**N exceptional machine of Large Capacity — especially adapted to Department Stores, Pop-corn Shops, or other "Indoor" Locations.

**Double Corn Poppers** of latest design—**Inverting Type**. (Same as shown in cut on page 15).  
**Maximum Capacity** — Equal in output to our largest and most expensive machines.

**Electric Motor Power** — Gas or Gasoline Fuel.

**Electric Lights** on four corners as shown.

**Power Transmission** — Bicycle Chain, Shaft and Gear Drive.

**Heating System** — Nickel Plated Copper popper case bottom is efficiently heated by hot water circulation — very economical.

**Peanut Roaster Capacity** — 17 lbs.

**Hot Peanut Drawer** — Keeps peanuts crisp and hot.

**Three Stock Drawers** — afford ample storage facilities.

**Brass Trim** — of exclusive design, highly polished and Nickel Plated.

**Finish** — White enamel standard. (Option of other colors).

**Dimensions** — 66 inches long; 31 in. wide; 63 in. to top of poppers. Weight 475 lbs.

**NOTE**—When so desired, this model can be supplied as Corn Popper Only — without Peanut Roaster.

Put a Model 400 to work in your store, and see it earn a harvest of nickels and dimes that will make the limited space it occupies, the most productive of any other equal area about your premises.

**A LONG PROFIT AND QUICK TURN OVER**





## Improved Model 401—Roaster and Popper With Case

**T**HIS machine is ideal for use at Ball Parks, Fair-grounds, Theatre Lobbies, Department Stores, etc., which require an unusually attractive machine of maximum capacity. Built to conform with rules and regulations of the National Board of Fire Underwriters. "All steel" frame construction throughout. Electric wires run in steel moulding. Heavy brass trim, nickel plated. All glass heavy bevel edged. Double Hinged doors at rear.

Latest style inverting type poppers. Electric motor drive.

Extra Stock drawers provided, affording ample storage facilities for raw corn, peanuts, reserve stock of popped corn, etc.

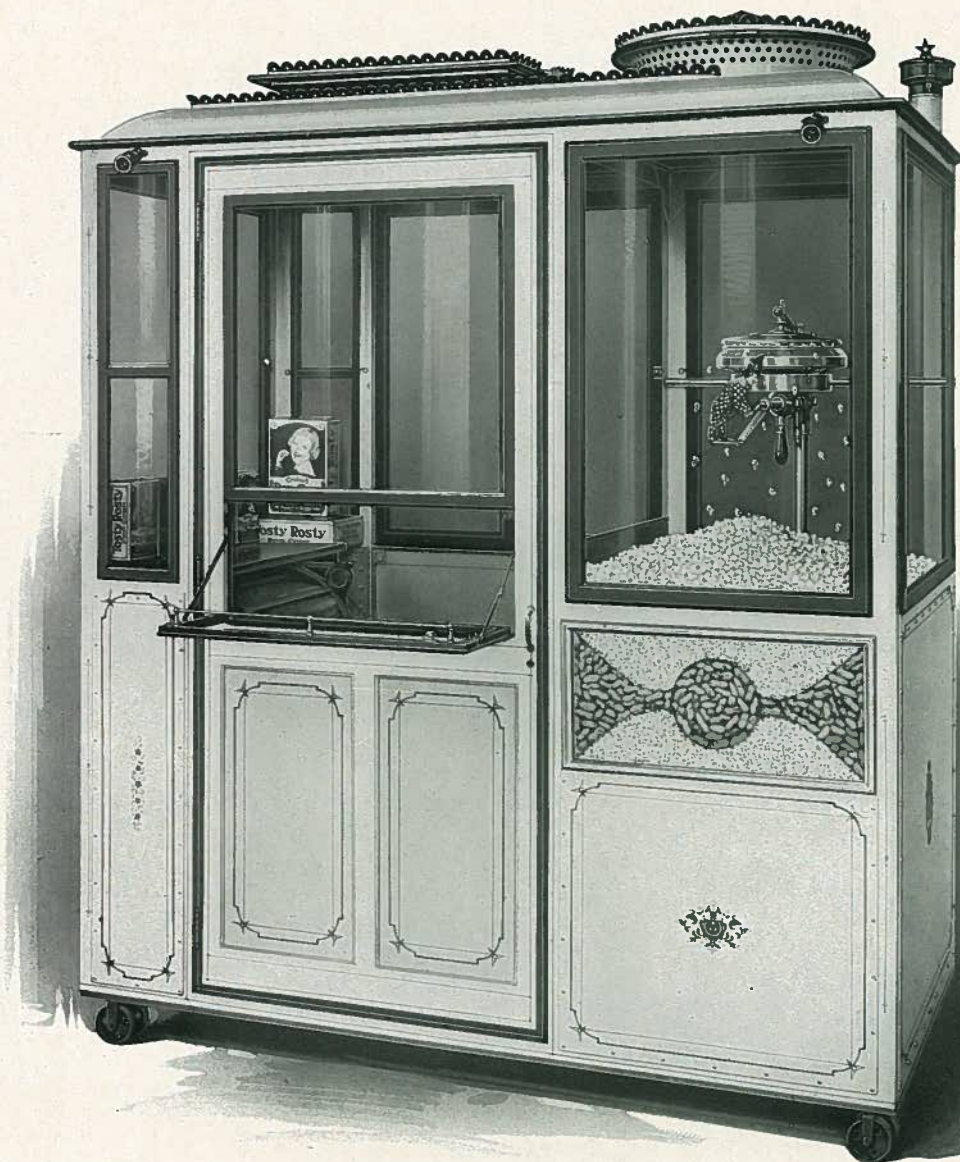
Peanut roasting cylinder is of 20 pounds capacity.

**Dimensions**—65 inches long, 31 inches deep, height to top of popper case approximately 7 feet. Weight about 525 pounds.

**Price and Installment Terms on Request.**

**200% PROFIT—NO COMPETITION**





## Booth Model

**R**ESPONDING to the growing demand for a compact "One-Man" machine, we take pleasure in announcing the addition of this highly attractive and serviceable machine to The Cretors line.

Occupying only 3x6 feet sidewalk or ground space, the Booth Model enables its fortunate owner to occupy choice locations which exclude larger equipment.

### — Specifications —

**Power**—Electric Motor—Direct Gear Drive.

**Electric Lights**—in Popper Case and on outside at top.

**Fuel**—City Gas standard. (Gasoline Optional).

**Latest Improved Single Popper, "Large Capacity"**—Inverting Type.

**Electric Popping Element**—in lieu of gas or gasoline supplied at reasonable extra cost.

**Automatic Corn Separator**—Power driven.

**Hot Peanut Drawer and Popper Case Bottom** efficiently heated by electricity on electric models—and by special Hot Water System where gasoline fuel is used.

**Entrance Door** 32" wide with drop counter. Hinged sash on Rear Side for serving Auto trade, etc.

**Ventilation**—Adjustable trap door in roof.

**Peanut Roaster** (when desired) at rear end under shelf. 10 lb. capacity.

**Finish**—White Enamel and Nickel Plate.

**Frame**—All Steel Construction. 36" wide, 6 ft. long, 78" inside height.

**Standing Room:** Without Roaster 36"x44"; With Roaster 30"x36". Popper Case 28"x36".

**Note:** Machine can be built with popper case at either end. When ordering, state which end (right or left) you wish popper placed when standing outside, facing entrance door.

Entrance door can be placed on rear side instead of front if desired.

POP-CORN EATERS—PREFER CRETORS





## Sidewalk Special

**T**HIS Model is designed especially for sidewalk, or other more or less permanent locations where space is an object and a compact "interior-operated" machine is desired. Standing or working space in center of machine is 36x42 inches, all working parts being convenient thereto.

Sash are so arranged as to completely "open up" or "enclose" the entire machine. Entrance door in center has drop sash and folding counter. Hinged transoms have transparent colored glass signs. The large signs are of heavy plate glass, the lettering and background being embossed by the sand-blast process. All Steel Frame construction. Bevel edge plate glass throughout. Double poppers—latest inverting type.

This machine is the finest of its kind on the market, and especially suited for standing next to a building where permits are restricted to three feet.

**Dimensions**—Length of frame, 8 feet 6 inches. Total length, 10 feet 8 inches. Width, 36 inches. Can be built in special sizes.

**Write for Special Bulletin and Complete Specifications. Price and Terms on Request.**

"EACH KERNEL SEASONED ALIKE"





## Special Store Front Outfits

**I**LLUSTRATION above shows a special "Store Front Outfit" complete in all details, intended to be placed inside the building line. Machine illustrated is designed for outdoor as well as indoor use, and the design can be modified to meet existing conditions. Ample shelving is provided for candies, gum and kindred stock. Option of Electric or Steam Power.

Machines along these lines are especially valuable in restricted locations, and we will gladly furnish suggestions and quotations for special equipment of this nature, which is becoming very popular among confectioners and other store owners.

Upon receipt of full information regarding your proposed location, with dimensions, equipment desired, etc., we will be glad to give you an estimate of the approximate cost of building such equipment.

Write fully giving all details.

**NOMINAL INVESTMENT — NON-PERISHABLE STOCK**





## No. 6 "Earn-More" — Steam Power

### Popper and Roaster

**T**HIS machine is of the same general design and construction as the Enlarged No. 6 "EARN-MORE" shown on page 2 of this catalog.

It is particularly adaptable to Amusement Parks or other locations where electricity is not available.

**Simple and Durable**—This machine is a wonderful trade puller for other goods you sell and affords you a valuable opportunity to materially increase your business.

**Frame**—Is of "All steel" construction. Corn Popper is of the same size as our largest and most expensive machines. Corn Separator supplied for removing hard kernels.

**Roasting Cylinder**—Of 10 pound capacity. Adjustable Shelf is very convenient and easily detached.

**Engine**—Is amply powerful to operate corn popper and peanut roaster at the same time.

**Fuel**—Gas burners are standard equipment—Gasoline burners if desired.

**Dimensions**—Same as Enlarged No. 6 EARN-MORE. (See page 3).

**Prices and Installment Terms on Request.**

**NOTE**—This machine can be equipped for both steam and electric power at a reasonable cost.





## No. 2 Wagon

**A** GREAT favorite, and the cheapest wagon machine we build. Thoroughly dependable in operation; very simple and durable. Hundreds of these machines are being used in connection with stores, sidewalk stands and other lines of business, with gratifying results.

A No. 2 Wagon operated in front of your store is worth its cost as an advertisement alone. We are pleased to continue a model which in the past has proven itself the most successful and best money getter of any machine on the market of equal price. Store owners cannot afford to ignore this attractive and profitable adjunct to their business.

Peanut Roaster capacity, about 10 pounds.

**Dimensions**—Frame, 20 inches wide by 52 inches long. Popper case, 20x20x24 inches high. Extreme width, 31 inches. Height, 5 feet 10 inches. Weight, about 300 pounds.

**Write for Special Bulletin and complete Specifications.  
Price and Installment Terms on Request.**

**FOR YOUR OWN SAKE — BUY THE CRETORS MAKE**





## Improved No. 2 Wagon with No. 1 Engine

**P**OSSESSING all the features of our cheaper models, and many other advantages such as No. 1 Engine (see page 32), large popping pan, fuel under air pressure, heavier running gear, tires, etc., this machine has achieved a remarkable success.

Steel frame construction throughout including canopy. Extra heavy wire wheels with rubber tires. Popper case and Hot Peanut Drawer efficiently heated by boiler draught. Capacity of Peanut Roaster, 11 pounds.

**Dimensions**—Length of frame, 57 inches; width, 22 inches. Height to top of awning, 79 inches. Popper case, 22x22x24 inches high. Width out to out of hub caps, 35 inches. Extreme length, 75 inches. Weight, about 375 pounds.

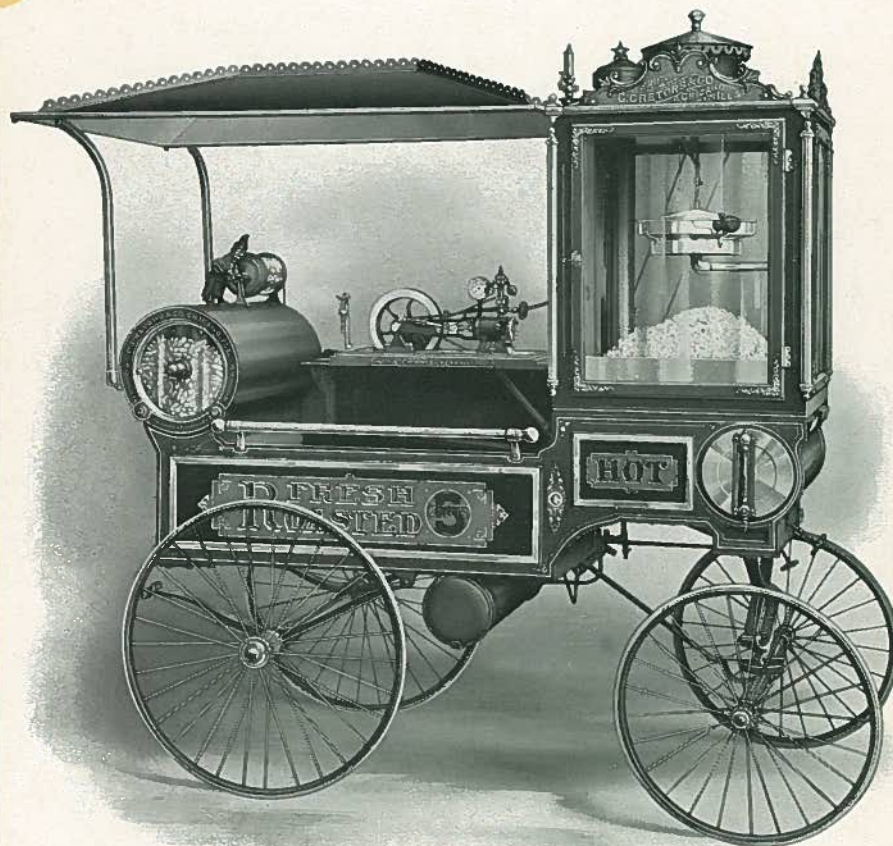
**Price and Installment Terms on Request.**

**Write for Special Bulletin and complete Specifications.**

**NOTE**—The Improved No. 2 Wagon can also be furnished equipped as above with the exception of 9 inch popping pan and No. 2 engine at a reduction in cost.

**SIMPLE—ECONOMICAL—DURABLE**





## No. 1 Wagon

**A**N elegant and attractive machine which has given universal satisfaction for many years past. Hundreds in use.

Being portable, it can be readily moved to any desired location. A profitable business can be done at your store or street corner during the day, and in front of theatres, parks or other places during the evening. It is especially adapted to pleasure grounds, picnics, fairs, show grounds, etc. Being a very attractive machine, it never fails to attract widespread attention and comment, resulting in a large trade. It is designed for speedy work and handling a rush business, and will keep the operator hustling to dispense the stock as rapidly as it will prepare same.

This machine is a veteran of the Cretors line, and many hundreds are in successful operation throughout the country.

**Dimensions**—Width, out to out of hub caps, 36 inches. Total length of frame over all, 5 feet 10 inches; width of frame 24 inches. Height to top of popper case, 6 feet 7 inches. Popper case, 24x24x30 inches high. Peanut pan, 24x42 inches. Capacity of Peanut Roaster, 17 pounds. Weight, about 475 pounds.

**Price and Installment Terms on Request.**

**Write for Special Bulletin and complete Specifications.**

THE CRETORS WAY IS HERE TO STAY





## Improved No. 1 Wagon Model "B" 1916

**I**N this model we embody features heretofore found only on our more expensive machines. The design is highly attractive, symmetrical and convenient. Steel frame construction throughout.

Popper is shaft and gear driven, eliminating all chains and overhead mechanism. Transparent flash glass signs surmount popper case.

Bevel edge plate glass throughout, including chipped glass signs. Large Hot Peanut Drawer under popper case, and bottom of case itself, are efficiently and economically heated by boiler draught.

Wood wheels, fitted with buggy rubber tires.

Elaborate Brass Trim is heavily nickel plated. Illumination is supplied by 500 Candle Power hollow wire gasoline light, with inverted mantel.

**Dimensions**—Width, out to out of hub caps, 42 inches. Length over all, 8 feet 2 inches. Frame, 26 inches wide, 6 feet 6 inches long. Popper case, 26x26x32 inches high. Peanut Pan, 26x42. Steel canopy, 36 inches wide, 7 feet 8 inches long, provided with drop curtains. Height 7 feet 3 inches. Capacity of Peanut Roaster, 21 pounds. Weight, about 720 pounds.

**Price and Installment Terms on Request.**

**Write for Special Bulletin and Complete Specifications.**

IN THE LEAD FOR FORTY YEARS





## Improved No. 1 Wagon Model "A"

**T**HE popularity of this machine during the past eleven years has exceeded our most sanguine expectations, and it continues as a favorite among our customers. Steel frame construction throughout.

Exquisite Brass Trim nickel plated.

Popper case bottom, nickel plated copper.

Copper water tank. Large Hot Peanut Drawer, and pop-corn case are heated by boiler draught, insuring hot goods at all times machine is in operation; efficient and economical. Strong wood wheels fitted with best grade buggy rubber tires. Large stock box over rear axle.

Illumination supplied by 500 Candle Power hollow wire gasoline light, with inverted mantel. Capacity of Peanut Roaster, 18 pounds.

Plate glass throughout, including chip glass signs.

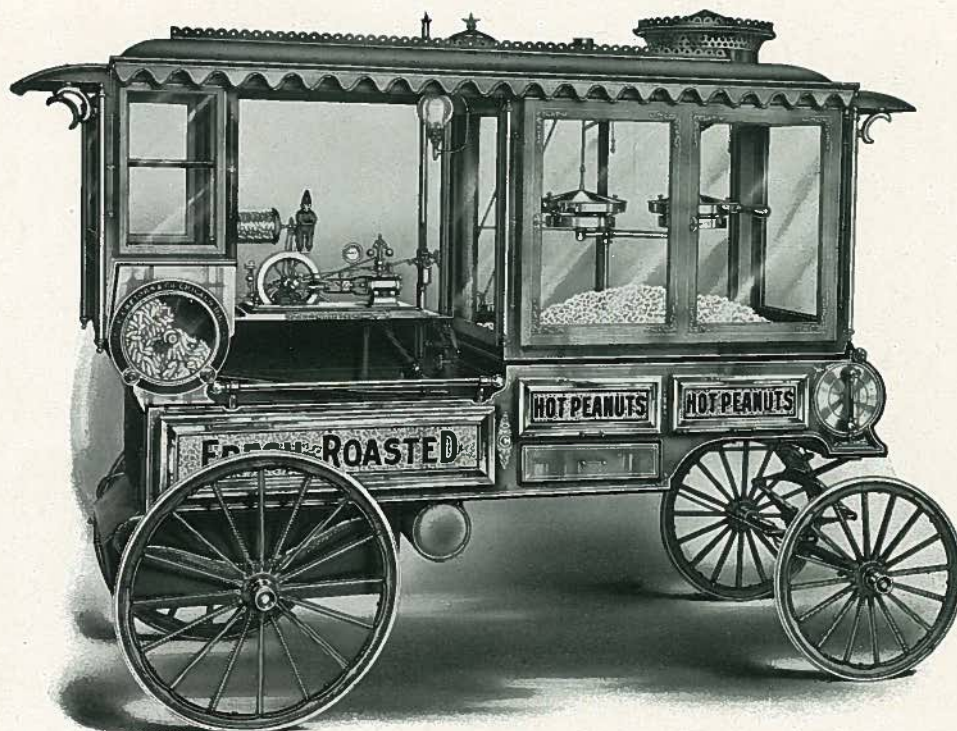
**Dimensions**—Width out to out of hub caps, 44 inches. Total length over all, 7 feet 10 inches. Height to top of dome, 7 feet 4 inches. Popper case, 28x28x34 inches high. Peanut pan, 28x42 inches. Weight, 800 pounds.

**Price and Installment Terms on Request.**

**Write for Special Bulletin and complete Specifications.**

**CRETORS POP-CORN — IS A BIG REPEATER**





## Improved No. 1 Wagon Model "A" With Double Popper

**T**HE design and general construction of this machine is the same as our standard Improved No. 1 Wagon Model "A" described on page at left, excepting that the popper case is lengthened and two corn poppers installed in place of one, thus doubling the popping capacity. Doors on front side and end of popper case.

Bevel edge plate glass throughout, including chip glass signs. Wood wheels—rubber tires. Three large sliding drawers under popper case — and large stock-box over rear axle.

This machine is especially adapted for Amusement Parks or other places where a portable hand-drawn outfit of large popping capacity is desired.

**Illumination**—Supplied by 500 Candle Power hollow wire gasoline light, with inverted mantel. Weight, about 900 pounds.

**Dimensions**—Popper case 46 inches long, 28 inches wide and 36 inches high. Total length, 9 feet 4 inches. Width, out to out of hub caps, 45½ inches. Peanut pan, 28x42 inches. Width of frame, 28 inches.

Write for Special Bulletin. Price and Installment Terms on Request.

INCREASES SALE OF OTHER GOODS





## Improved Special Model "C"

**T**O those who wish an Enclosed Type of machine, but to whom price is an object, we take pleasure in introducing our Model "C", which is designed for successful operation at all seasons of the year. One need not lose any trade due to inclement weather. Of beautiful design and finish, this machine is an ornament to any town or city. Attractive, durable and of medium price, it has proven itself the best machine on the market for the money. Entrance is gained through a large panel door at "rear end," which is fitted with an adjustable drop sash and counter. Power Transmission is by means of gears, shaft and bicycle chains, with various disengaging clutches, etc. All Steel Frame construction.

**Dimensions**—Frame 44 inches wide, 8 feet 8 inches long. Total width out to out of hub caps, 65 inches. Total length over all, 11 feet 9 inches (Driver's Seat Model 22 inches additional.) Total height to top of dome, 8 feet 9 inches. Standing room, 44 by 73 inches.

This model can be supplied with Driver's Seat if desired similar to our Improved Special Model "D" (shown at right). Also Ice-cream Cone or Frankfurter Outfits.

**Write for Special Bulletin and Specifications.**

**Prices and Terms on Request.**

**CRETORS POP-CORN — ALWAYS IN SEASON**





## Improved Special Model "D" With Driver's Seat

**T**HIS machine is an enlarged Model "C" (shown at left) with various refinements and special features, and is offered to such of our customers as wish an exceptionally roomy and attractive machine of supreme strength and beauty. Entrance is gained through large panelled door at "Rear End" fitted with adjustable drop sash and folding counter. Folding sash and drop counter on front side open up this space for serving trade. Transoms have transparent colored glass signs. Drop counter on rear side over boiler. Shaft and gear drive throughout. All Steel Frame construction.

**Dimensions**—Frame 46 inches wide, 9 feet 8 inches long. Total width out to out of hub caps, 65 inches. Total length over all, 12 feet. Height from ground to top of dome, 9 feet 2 inches. Standing room or working space, 46 inches wide by 85 inches long at waist line.

**We also build an Enlarged Model of this machine which is 12 inches longer and 4 inches wider.**

A Hot Lunch Outfit can be installed on this model when desired at a reasonable extra cost. Likewise equipment for serving Ice cream Cones or Frankfurters.

**Write for Special Bulletin and Specifications. Price and Terms on Request.**

EVERY BITE A DELIGHT





## Automobile Models

**E**VER since the automobile was invented we have been awake to the advantages and ultimate market for a successful "automobile corn popper and peanut roaster." For the past fifteen years we have been experimenting, testing, and improving, until today we are building the most efficient, high grade and attractive equipment of this kind that can be bought anywhere.

**CHASSIS**—All automobile models are mounted on strongly reinforced Ford one ton truck chassis with worm drive.

**MOTOR**—The regular Ford motor is used which provides ample power.

**SPRINGS**—Chassis is equipped with our own special design springs which are built sufficiently strong to carry the load easily and smoothly.

**WHEEL BASE**—One hundred and twenty-four inches.

**WEIGHT**—Approximately 3600 pounds according to equipment.

**TIRES**—Heavy pneumatic cord.

**STANDARD EQUIPMENT**—All automobile machines equipped with Peanut Roaster and Double Corn Poppers.—Inverting Type.

**SPECIAL EQUIPMENT—EXTRAS:** Self Starter, Ice-cream packer cabinet, soft drink cooler, hamburger and lunch outfit, red hot cooker, etc. Special equipment added according to specifications.

**Write for Special Bulletin — Prices and Complete Specifications.**

**STOP — THINK — LISTEN — BUY CRETORS**



# How CRETORS Machines Are Built

## Material and Workmanship

**Q**UALITY first." That is the policy governing the manufacture of every machine we build. Nothing but the best of material is used. We are not merely "assemblers" but build our machines complete from the raw materials.

Our workmen are paid on a day-rate basis so that we avoid the hurried, careless work so often resulting from "piecework." Most of our men stay with us year after year.

## All Steel Frame Construction

The frame or body of every Cretors machine is built of angle, plate and sheet steel throughout, thus assuring maximum strength and durability.

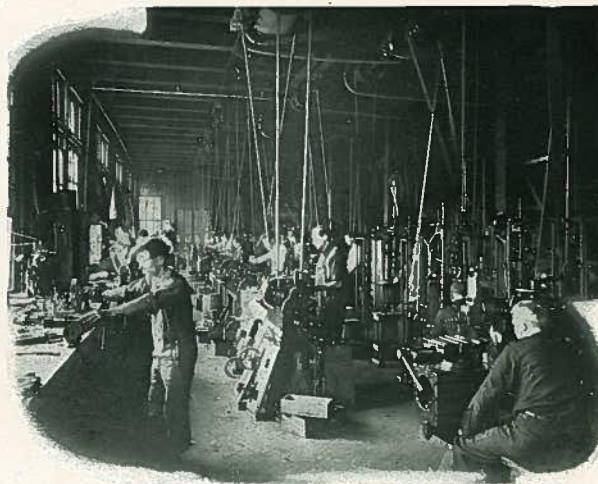
Our experience has demonstrated the all-steel frame, among other advantages, to be fireproof, stronger, lighter, more durable, more secure in joints, etc., hence we have adopted it as standard equipment.

## Mechanically Perfect

All parts are machined in our own shops, fitted and assembled by mechanics who are experts in this particular class of work. In addition, each finished machine is thoroughly tested in every possible way by trusted inspectors before it leaves our factory.

## Beautifully Finished

All Cretors machines are beautifully finished. Only the very best paints and varnishes are used, and sundry metal parts are heavily nickel plated. Cretors machines will harmonize with the finest and most expensive store fixtures.



MACHINE SHOP VIEW

## Easy to Operate

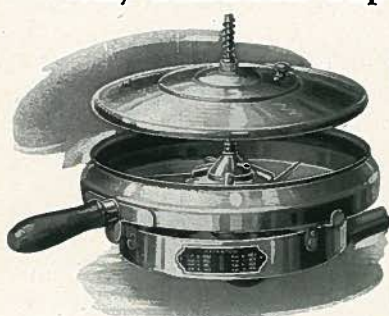
There is no elaborate and complicated mechanism to contend with in the operation of Cretors machines. All parts are strongly and simply constructed so that anyone of average intelligence can perform every operation incidental to operating the machine, popping corn and roasting peanuts.

## 15 Years of Service Not Unusual

We have customers who have had their Cretors machines in constant operation from 10 to 15 years and which are still giving excellent service. Certainly there could be no more convincing proof of the quality we build into them.

## All Machines Equipped with CRETORS Original Self-Buttering and Salting Corn Popper

### Why CRETORS Pop-corn Is Better



By the Cretors exclusive method the flavor is cooked right into the corn as it is popped, and not smeared on afterwards. The Cretors self seasoning popper has been used on our machines exclusively for many years, and with the exception of minor mechanical improvements no changes have been made. The Cretors corn popper is still the most perfect and successful device of its kind in the world today.

### No Greasy Sacks

Being perfectly crisp and dry Cretors pop-corn does not grease the sacks nor the fingers and clothing of your customers. Yet every kernel is perfectly flavored and salted.

### No Odor From Fuel

Fire or fumes from the burner do not come in contact with the popping corn at any time; hence there is absolute freedom from all gasoline taste or odor, in pop-corn "popped the Cretors Way."

### Large or Small Capacity

The capacity of the Cretors popper is ample to care for practically any volume of business, as a full popping can be produced about every three minutes by a single pan, producing from ten to twelve 5c bags according to size of popper and quality of corn used.

### Use Large or Small Grain Corn

Any grade of pop-corn can be used in the Cretors popper—regardless of size of grain. You will find, too, that there will be less waste of corn with a Cretors machine—fewer unpopped grains to throw away.

### No Waiting for Popping Plate to Heat

Within three minutes after you light the popper burner you can be popping corn, and a full popping of 10 to 12 bags can be turned out at three minute intervals all day long if desired.

### Easily Cleaned

A great many owners of Cretors machines tell us that one of the numerous advantages our machines have over others is the ease with which they can be cleaned. Not only is the popper easily cleaned, but every part of the entire machine is readily accessible. 15 minutes daily will keep a Cretors machine clean and shining.

YOUR LOCATION PLUS A CRETORS MACHINE EQUALS SUCCESS





### No. 8 Peanut Roaster Hand or Power

**A** DESIRABLE roaster for grocers, candy manufacturers or jobbers. Our mixer insures an even roast. Front end, plate glass. Peanuts can be examined while roasting by means of special tester. Built in four sizes.

12x24 inch	18x30 inch
18x24 inch	18x36 inch

The three larger sizes are fitted with gearing and require but minimum power—easily turned by hand.

Electric Motor power can be supplied if desired.

Specify whether you wish **Gas** or **Gasoline Burners**.

**Price and Installment Terms on Request.**



### Cretors Steam Peanut Warmer

**T**HIS handsome, convenient and attractive peanut warmer only costs about six cents to operate ten hours. Either **Gas** or **Gasoline** fuel. No charcoal to bother with. Makes a large display with a small stock of nuts. Copper hot water tank keeps the peanuts hot and crisp. Capacity one-half bushel.

Durable and attractive, this warmer is very popular with those who do not roast their own peanuts but wish to keep their stock fresh and hot.

Heating tank is fitted with exhaust whistle.

**Price on Request.**

Illuminating torch if desired \$3 extra.

Also supplied with "Electric" Heating Element if desired.

**EVERY DAY THE CRETORS WAY IS SURE TO PAY**



# CRETORS Policy Toward Owners

**Guarantee** "We guarantee the material and workmanship in every Cretors machine that leaves our factory. Should any part or parts prove defective within a reasonable length of time, we will replace same **FREE OF CHARGE.**"

It is not what is said in a guarantee that counts — but WHO says it. Our policy is calculated to show an appreciation of your business and maintain our universal reputation for

## "A Square Deal Always"

### Your Success Is Our Success

The remarkable success which we have enjoyed during the past forty years, as pioneer builders of corn popping and peanut roasting machinery, is due to the fact that practically all of our customers are operating their machines successfully and making money with them.

If there were not enormous profits to be made from the sale of pop-corn and peanuts, and if Cretors machines were not the best fitted to attract and hold customers, we could not have remained in business these many years.

### 40 Years Experience

The test of service in large numbers under all possible conditions of use is the only real proof of actual merit. Perfection as exemplified in Cretors machines is the result of forty years patient and intelligent endeavor, restricted to the needs of our progressive and successful customers.

Thousands of Cretors machines are in daily use in many parts of the world and have been subjected to all sorts of treatment — thus enabling us to gain "EXPERIENCE" beyond all others. Without such experience Perfection is impossible.

During all these years the name "Cretors" has been a guarantee of absolute responsibility and excellence of product of which we are justly proud.

### Once a Customer - - Always a Customer

The quality of Cretors machines and their ability to earn money for their owners can be judged from the fact that rarely does a customer use any other make of corn popper or peanut roaster after he has once used a Cretors.

Some of our friends have started with one Cretors machine and now operate chains of them — all bought through the profits of their original investment in a single outfit.

Others, whose business does not permit such expansion, have started with our smallest machine and as their business grew and their pop-corn profits increased, gradually increased the size of their equipment and now operate our finest and most expensive machines.

CHICAGO

### We Want YOU to Make Money

Not only do we feel it our duty to our customers to design and build our machines just as attractive, efficient and durable as possible, but when you buy a Cretors machine we do everything we can to help you make money with it. We want you to have the benefit of our many years experience. We tell you just how to set up your machine and start operating it — how to pop corn and roast peanuts most economically, yet with the utmost flavor and goodness. We give you the benefit of ideas used by other successful Cretors owners in building up and enlarging their business—and provide you with advertising matter, moving picture slides, newspaper cuts, etc., which have proven successful in boosting sales. All of this service is at your disposal when you become a Cretors machine owner.

### Very Liberal Terms

### Easy To Get Started

Our plan of selling Cretors machines is intended to be so very liberal that most any one can secure one without hardship or sacrifice.

We have purposely made our terms just as low as is possible so that your machine should actually pay for itself out of the profits it earns and show a profit right from the start.

You are only asked to make a small investment when you place your order. Most of our customers earn back this "down payment" within a short time out of profits, in addition to the small bi-weekly payments. Some even earn the entire cost of their machines within two or three months.

When you can secure a Cretors machine so easily it isn't a question of whether or not you can afford one — **but can you afford to be without one?**

Write for additional information, prices and terms on the model of your choice.

C. CRETORS & CO.

MAXIMUM VALUE — MINIMUM COST



# Motive Power

**T**HERE is a fascination about a working steam engine of which the public never tires.

In selecting a peanut and pop-corn machine you should pay special attention to the "MOTIVE POWER" as it is an important source of attraction which must be properly designed and thoroughly reliable.

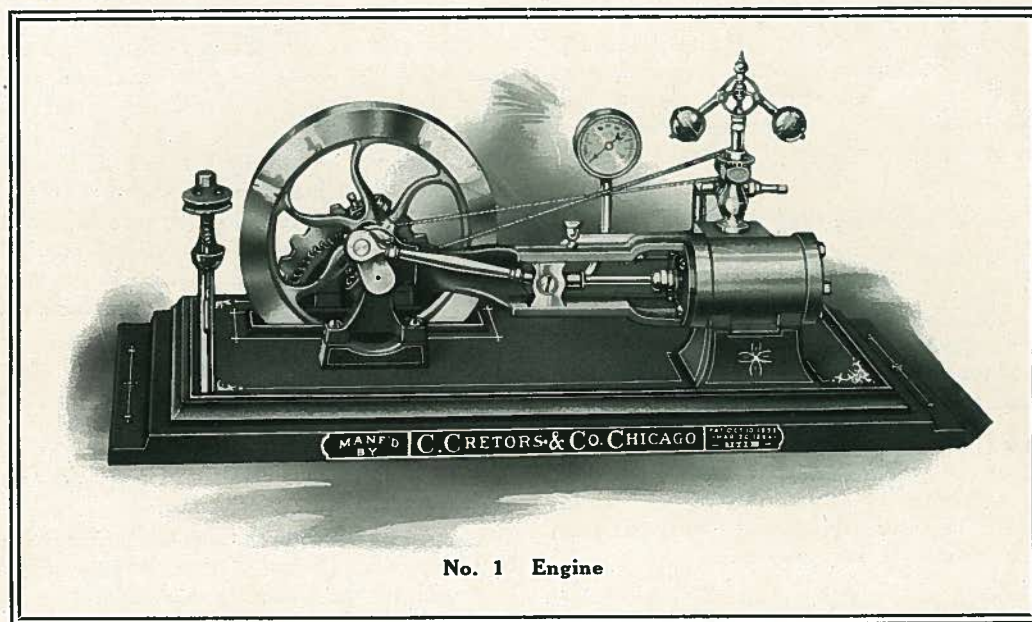
**Cretors' Steam Engines**—are all built in our own shops and are famous for their Simple and Unequaled Design, Durability and General Efficiency. The various models are all of our own design and represent the finished product of over 40 years successful development. We take especial care and pride in their construction and they can be relied

upon to perform their work in a highly satisfactory manner and render years of efficient and economical service.

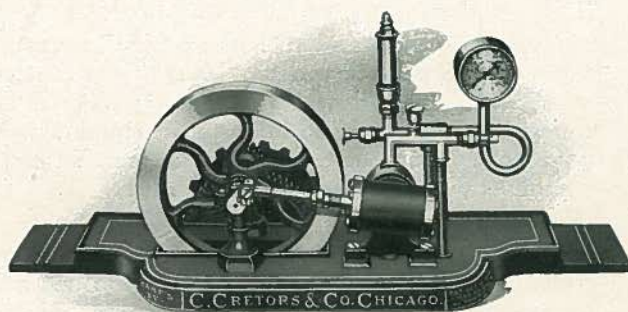
Our engines command the attention and admiration of every passer-by and are an unequaled source of attraction—their design is often copied, but never equaled.

**Electric Motors**—supplied on our Electric Power Models are of standard manufacture and highest quality.

The electric motor, while not as attractive as our steam engines, is a convenient, cheap and desirable power for use indoors, in front of the store, or at other locations where current is available.



No. 1 Engine



No. 2 Engine



Electric Motor

May, 1925

Printed in U. S. A.

THE CRETORS WAY IS EASY TO PAY



