

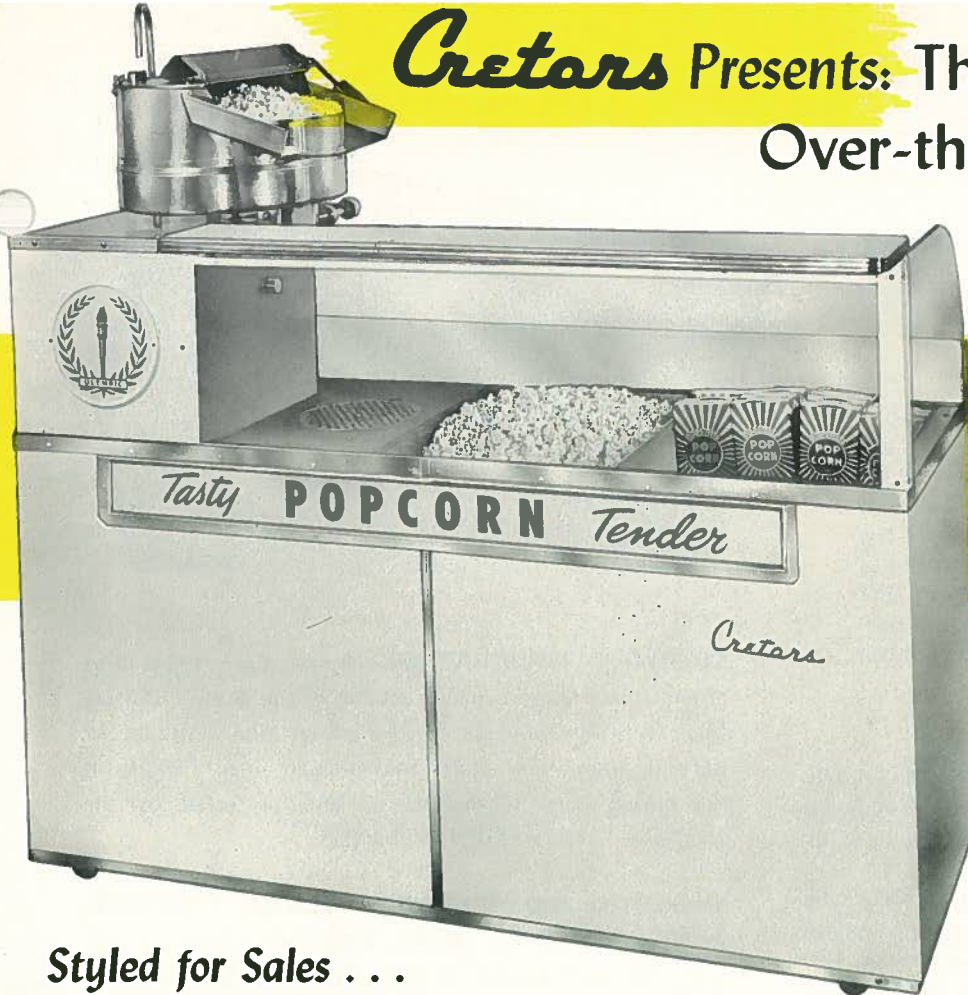
Cretors Presents: The World's Finest Over-the-counter Model

POPCORN MACHINE

The

"OLYMPIC"

The "Olympic" incorporates many time and labor-saving features found in no other popcorn machine — features characteristic of Cretors quality leadership in the popcorn machine field for over 75 years.



*Styled for Sales . . .
. . . Engineered for Profit
Since 1885*

**THE ONLY OVER-THE-COUNTER MODEL THAT OFFERS
A CHOICE OF 3 KETTLE SIZES!**

**1 GIANT 18 OZ. ELECTRIC KETTLE
UP TO \$50.00 PER HOUR EARNING CAPACITY.**

**2 GIANT 32 OZ. ELECTRIC KETTLE
UP TO \$75.00 PER HOUR EARNING CAPACITY.**

Choice of Electric or Gas Heat! Electric kettles pop 18 oz. or 32 oz. of raw corn per charge and has an earning power of \$50.00 to \$75.00 per hour. Power is transmitted to kettle heating elements through concealed copper commutator assuring positive contact and full power in all positions. Cretors thermostatic heat control is fully automatic! Just turn on the "Olympic's" single conveniently-located heat control switch—from then on Cretors engineering takes over to give you more popped corn, faster, with quicker animation.

**3 GIANT 32 OZ. GAS KETTLE UP TO
\$75.00 PER HOUR EARNING CAPACITY.**

Gas Kettle pops 2 lbs. of raw corn per popping and has an earning power of \$75.00 per hour. Burns natural, manufactured, or bottled gas (specify which when ordering).

Championship Production has been proven in "side by side" tests. The extra-heavy gauge steel bottom, lighter-gauge steel walls of the Cretors kettle concentrates the heat under the corn for maximum popping efficiency and minimum heat loss. The lid lifts automatically at the first touch of popping corn, allowing the corn to overflow into the popper case with greater animation and sales appeal!

Every Cretors "OLYMPIC"

DELIVERS THESE

SALES-BUILDING PROFIT MAKING FEATURES

THE EXCLUSIVE

CORNDITIONER

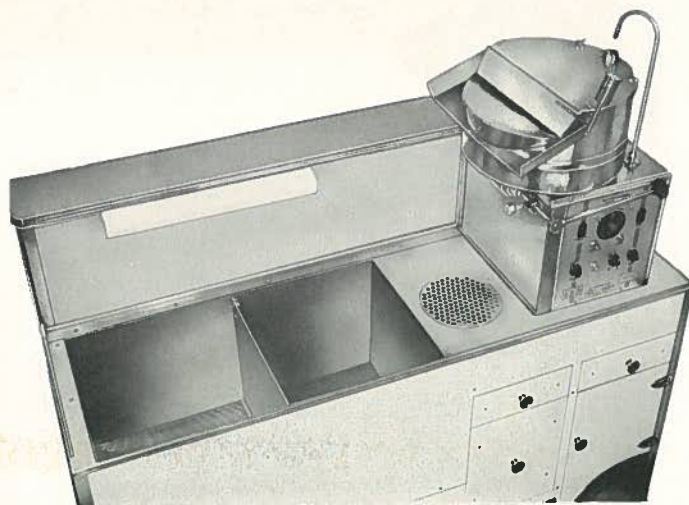
The Cretors Cornditioner forces *filtered* warm, dry, air through the stainless steel storage bin, keeping popped and boxed corn hot, crisp, and tasty at all times. The bin features a movable partition that allows you to store varying amounts of either boxed or popped corn. This stainless steel storage bin is 33 $\frac{3}{4}$ " long x 20 $\frac{1}{4}$ " wide and 15" deep below the popper case bottom. Storage capacity 6 cubic feet. Additional storage area may be utilized as much as 12" above storage bin.

"PUSH-BUTTON SEASONING PUMP:" Electrically-driven pump delivers the correct amount of seasoning to the kettle *automatically* through a stationary tube at the *push of a button!*

Saves time, saves labor, saves seasoning! Positive-displacement, completely self-draining to prevent popping oil from hardening in the pump. Centrifugal pressure type pump has only one moving part. Driven by 1/20 h.p. totally-enclosed electric motor.

EYE APPEALING CABINET! The Cretors "Olympic" will give any concession the glamor and sales appeal so necessary for top earnings! Lower part of cabinet is finished in gleaming white baked enamel for smarter appearance that will stay new-looking years longer. Stainless steel trim. Molded yellow plastic decorative strip is illuminated from behind and has red and green silk-screen "POPCORN" sign. Illuminated yellow medallion with Olympic torch. Over Size Casters permit easy moving for cleaning.

HEATED SEASONING DRAWER: Electrically-heated seasoning drawer included as standard equipment on the Cretors "Olympic." Keeps seasoning liquid and ready for instant use in kettle.



CUTAWAY ILLUSTRATION shows the tremendous amount of storage capacity in the stainless steel storage bin. Note the movable divider which allows storage of varying amounts of boxed and popped corn. Quality of the stored corn is maintained and protected by the Exclusive Cretors CORNDITIONER.

SIMPLIFIED, CONVENIENTLY-LOCATED CONTROL PANEL: Switches for agitator, kettle heat (electric model only), lights, cornditioner and push-button for seasoning pump handily grouped within easy reach on kettle housing. Kettle heat on electric model is controlled by single Off-On Switch.

CABINET DIMENSIONS: 62" long, 24" front to back, 46" high to top of counter. Formica counter 38" long by 8" deep.

Shipping Weight: 542 lbs. Net Weight: 404 lbs.

EASY-TO-USE CASH DRAWER INSULATED RAW CORN BIN WASTE CORN DRAWER

CONSTRUCTION: Every Cretors machine features all-metal welded steel frame. All-steel kettle and stainless steel interiors.

GIANT 18-OZ. ELECTRIC KETTLE: Capacity 18-oz. of raw corn and 6-oz. of popping oil per charge. Approximately \$50.00 per hour. Fully automatic thermostat control. 115V/230V. 60 cycle, A.C., single phase, three-wire. Number 10 or larger wire necessary with direct feed. Total wattage: 4700. Catalog No. 018E.

GIANT 32-OZ. ELECTRIC KETTLE: Capacity 32-oz. of raw corn and 11-oz. of popping oil per charge. Approximately \$75.00 per hour. Fully automatic thermostat control. 115V/230V, 60 cycle, A.C., single phase, three-wire. Number 10 or larger wire necessary with direct feed. Total wattage: 6700. Catalog No. 032E.

GIANT 32-OZ. GAS KETTLE: Capacity 32-oz. of raw corn and 11-oz. of oil per charge. Approximately \$75.00 per hour. Total wattage: 1700. 115V — two-wires for agitator motor and lights. Specify natural, bottled or manufactured gas. B.T.U. per hour: 40,000. Catalog No. 032G.

PRINTED IN U.S.A.

**Manufacturers of the Official Weight Volume Tester
for the POPCORN INDUSTRY**

Cretors and Co. — SINCE 1885
POPCORN BUILDING NASHVILLE, TENN., U.S.A.
FACTORY: CHICAGO, ILL.

Cable: Cretors

DISTRIBUTED BY: