



*Cretors*

**C. Cretors & Company**

**Designers and Manufacturers of Quality Foodservice Equipment**  
*Established 1885*



**I**t began over 100 years ago when a gentleman had a vision to adapt an ancient process to meet the needs of modern tradesmen. Little did he know that his vision would lead to a revolution that continues today. His concepts and designs set the foundations for both modern foodservice and food processing industries as we know them today. Long considered the cornerstone in the industry, C. Cretors & Company, designs and manufactures equipment that provides solutions.

### **Foodservice Equipment**

Cretors' original business was based on serving the needs of street vendors and concessionaires in the late 1800's. Charles Cretors designed and patented the first steam driven popcorn popper machine that popped corn in oil. Today, the Foodservice Equipment division has expanded to include cotton candy, warmers, dispensing systems, and other specialty equipment.

### **Food Processing Systems**

In 1967, Cretors introduced a continuous production line featuring a hot air fluidized bed oven for popping corn. Originally designed to meet the growing demands for high volume popcorn production, Cretors' production line was quickly adapted to produce other snack foods, cereals, and specialty products. This production line was the first of its kind, and revolutionized high-volume popcorn production.

### **Krispy Kist Products**

The Krispy Kist Products division, begun in 1933 and acquired in 2001, rounds out Cretors product lines with equipment that produces caramel and savory coated popcorn, and roasted products.

The core values of quality craftsmanship and technical innovation that guided Charles Cretors more than five generations ago continue to be the hallmark of all Cretors' products today. The engineers and designers in these divisions continually dedicate themselves to developing new equipment design while striving for product excellence.

***We Invented The Business  
of Popping Corn***

# Table of Contents

## Small Concession Equipment

6 oz. Nugget	page 2
6 oz. Goldrush	page 2
6 oz. Nite Club	page 2
8 oz. T-2000	page 3
12 oz. T-3000	page 3
14 oz. Profiteer	page 3

## Wagon Bases

Two-Wheel Black Nite Club Wagon Base	page 4
Two-Wheel Red Antique Wagon Base	page 4
Two-Wheel Knock Down Carts	page 5
Standard Four-Wheel Red Antique Wagon Base	page 5
Four-Wheel Steerable Red Antique Wagon Base	page 5

## Large Concession Equipment

16 oz. Merchant	page 7
16 oz. Econo-merchant	page 7
3' Diplomat	page 7
3' Headliner	page 7
4' Self Serve Diplomat	page 8
4' 5' and 6' Diplomats	page 9
6' Diplomat Pop N' Roc N' Roll	page 9
Electric Giant	page 10
Gas Giant	page 10
5' Open Top President	page 11
4' & 5' Enclosed President	page 11
6' Twin Enclosed President	page 11
3.5' Table	page 11
6' Table	page 11
6' Twin Table	page 11

## Warming Cabinets

Diplomat Showcase Warmer	page 12
Modular Showcase Warmer	page 12
Counter Showcase Warmer	page 13
Roc N' Roll Warmer	page 13
Tray Warmer	page 14
Portion Pak Warmer	page 14
Bulk Warmer	page 14

## Topping & Dispensing Systems

Bag-In-Box (BIB) Topper Dispensing System	page 15
Automatic Oil Pumps	page 15
Countertop Topping Dispensing System	page 15
The Original Automatic Bag-In-Box (BIB) Oil Pump	page 15
BIB Backroom Warmer	page 15
Hot Rod	page 15

## Cotton Candy Equipment

Ringmaster	page 16
Ringmaster Lite	page 17
Ringmaster Wagon Base	page 17
Stationary Cotton Candy Production	page 17

## Krispy Kist Equipment

Candy Corn Cooker	page 18
685 Hot Air Popper	page 18
Krispy Kritter Counter Roaster	page 19
No. 5 Royal Roaster	page 19

## Caramel Corn Equipment

Cooker and Coater CMD 100	page 20
Cooker and Coater CM 25	Page 20



# CRETORS®

**Designers and Manufacturers of Quality Foodservice Equipment**  
**Established 1885**



# small Concession Equipment

6 to 14 oz. Ideal for: Convenience Stores, Bars/Restaurants, Video Stores, Home Entertainment Centers and Equipment Rentals

## Convenience, Quality, Durability!

**W**hen you purchase a Cretors popper, you purchase quality, convenience, and durability. Every Cretors Small Concession Popper is built with the user in mind.

### Every Cretors' small popper includes these key elements:

- Stainless steel frame.
- Interior heating lamp.
- Heated corn deck.
- Nickel plated all-steel kettle resists corrosion and is easy to clean.
- Clean-in-place kettle permits easy cleaning.
- Plug-in kettle feature permits quick kettle removal if necessary.
- Cycling pilot light indicates kettle thermostat is operational and kettle is ready for production.
- Direct drive agitator provides longer motor life with no exposed gears to replace.
- Eye level lighted rocker switches indicate component operation.
- Antique poppers are all painted with Cretors' special powder coating that resists scratching.
- Optional 2-wheel and 4-wheel wagons available.
- Optional switch between "salted" and "sweet" corn production on 8 oz. kettles and above.
- One pop option available.

### 6 oz. Nugget (right)

- Entry level popper with aluminum frame.
- 75 watt reflector lamp.
- Heated corn deck not available.



### 6 oz. Goldrush (above)

Classic small popper design.

- Available in antique version. (right)



### 6 oz. Nite Club (left)

Same classic design with a sleek modern look.

- Tinted glass with etched "popcorn" sign.
- Powder coated frame in black.
- Cart is optional.
- Optional custom glass etching is available.

**One-Pop option: With a single push of a button, the kettle heats up, pops, and automatically shuts off after one popping cycle for easy operation.**





**8 oz. T-2000** (left)

- Increased popping capacity with minimal footprint.
- Available in antique version. (below)



**14 oz. Profiteer** (above)

Large concession convenience in a small concession popper with maximum production.

- Equipped for automatic oil pump.
- Kettle gas spring return.
- Available in antique version. Shown on optional base (below)



**12 oz. T-3000** (left)

- Increased popping capacity.
- Counter balance kettle dump system.
- Designed for use with a 12 oz. portion pack.
- Available in antique version. Shown on optional base (below)



**Custom painting is available to match colors specific to schools, banks, businesses, etc. The possibilities are endless. *You name it, we can do it.***



**CRETORS.**

Locate your nearest dealer at [www.Cretors.com](http://www.Cretors.com)

# Wagon Bases

*Ideal for locations where the counter model popper is not practical, or a small floor model is needed, and where mobility is desired.*

**C**ombine one of our wagon bases with either the standard or antique small concession popper for increased versatility and mobility. When placed in a strategic position, they are easily spotted and work hard to increase impulse sales.

## **Every Cretors wagon base includes these key elements:**

- Two-Wheel Bases accommodate 6, 8, 12 and 14 oz. poppers.
- Four-Wheel & Steerable Four-Wheel Bases accommodate 6, 8, 12 and 14 oz. poppers.
- Wagon base provides storage room for popping and cleaning supplies.
- Welded wagons are painted with Cretors special powder coating that resists scratching.
- Two-wheel bases are available welded or ready-to-be assembled.



**Two-Wheel Black Nite Club Wagon Base** (above)  
Accommodates 6 oz. Nite Club Popper.

## **Two-Wheel Red Antique Wagon Bases** (left)

Are available for the following:

- 6 oz. poppers.
- 8 oz. poppers.
- 12 oz. poppers.
- 14 oz. poppers.



**CRETORS.**

**Locate your nearest dealer at [www.Cretors.com](http://www.Cretors.com)**





Assembled

## Two-Wheel Knock Down Carts

Accommodates standard 6 oz. Goldrush and Nite Club Poppers.

- Simple design.
- Vinyl laminated steel construction in two colors, red and black.
- Rigid cross leg support.
- Small shipping box saves on freight costs.
- Assembles in 30 minutes, tools provided.
- Optional serving tray available (not shown).



Unassembled



## Standard Four-Wheel Red Antique Wagon Base (above)

- Accommodates all small concession poppers.
- Welded construction only.
- Large storage space.

## Four-Wheel Steerable Red Antique Wagon Base (below)

Axle and pull handle added for easy transport with nostalgic canopy option.

- Welded construction only.
- Large storage space.
- Optional locking cabinet.

(Pictured with Wagon Canopy Option)



# large Concession Equipment

16 to 48 oz. Ideal for: Theatres, Shopping Malls, Universities, Park Districts, Supermarkets, Stadiums & Arenas

## Suspended Poppers

Kettle suspended from cabinet ceiling

**Dependable, Solid,  
Easy to use!**

**C**retors designs and builds high volume equipment that outperforms other popping equipment in hard working concession areas.

### Every Cretors large popper includes these key elements:

- Nickel plated all-steel kettle resists corrosion and is easy to clean.
- Clean-in-place kettle permits easy cleaning.
- Direct drive agitator with no exposed gears provides longer motor life and is more sanitary.
- Lighted rocker switches indicate component operation.
- Single thermostat accurately controls kettle temperature for optimum popping.
- Cycling pilot light indicates kettle thermostat is operational and kettle is ready for production.
- Exclusive counter-balance kettle dump and return system.
- Kettle cover automatically lifts to allow popped corn to escape, maximizing popcorn expansion and profits.
- Equipped for automatic oil pump.
- Two-stage charcoal exhaust system works twice as hard to eliminate smoke and grease.
- Circulating hot air conditioner system keeps popcorn warm, dry and crisp.
- Optional switch between salted and sweet corn production.
- Ansul fire suppression system available.
- One pop option available
- Available as counter and floor models.
- Optional bases available.



### Logic II Option Exclusive Cretors' Patent

Step up to the 21st Century with Cretors Microprocessor Control System. This breakthrough in modern popping technology not only simplifies machine operation with a one-touch multi-function control panel, it automates and speeds up popper operation.

- Multilingual LCD readout.
- Real time operational feed back.
- On-board diagnostic servicing program.
- Data logging features.
- Simplified switchover from salted to sugar corn production.
- Automatic kettle shut off.
- Cleaning cycle.







### **16 oz. Merchant** (left)

Ideal for mid-size production.

- Stainless steel construction.
- 16 oz. kettle provides more production but has the compact footprint found in the 14 oz. popper.
- Optional stainless steel base available.

### **3' Diplomat** (right)

Available in 20 oz., 32 oz., and 48 oz. sizes, this popular large concession popper offers the most flexibility in both design and production.

- Halogen lights.
- Logic option available.
- Front or rear merchandising.
- Floor or counter model available.
- Shown on optional 3' stainless steel base.
- Plain stainless steel top available with neon or back-lit fluorescent sign.

*See page 8 for sign options.*



### **16 oz. Econo-Merchant** (above)

Best value machine for the mid-size concessions.

- Simplified exhaust and conditioner system.
- Shown on optional 3' base.
- Floor or counter model available.



### **3' Headliner** (left)

The luxury version of the Diplomat is available in 20 oz., and 32 oz. sizes.

- Stainless steel cabinet with rounded corners.
- 360 degree merchandising and accent fluorescent lights on all sides.
- Logic option available.
- Floor or counter model available.
- Shown on optional 3' base.
- Fluorescent back-lit sign option available.

**One-Pop option: With a single push of a button, the kettle heats up, pops, and automatically shuts off after one popping cycle for easy operation.**



**Locate your nearest dealer at [www.Cretors.com](http://www.Cretors.com)**



# large Concession Equipment

*16 to 48 oz. Ideal for: Theatres, Shopping Malls, Universities, Park Districts, Supermarkets, Stadiums & Arenas and other large concession stand areas.*

## Cabinet Options Ranging from Three to Six Feet Wide

**E**xtruded aluminum frames available in different sizes for customized equipment to meet space and production capacity requirements. Choose the one that works best for you.

### Sign Options for Diplomats



Back-lit fluorescent sign



Neon sign



### 4' Self-Serve Diplomat

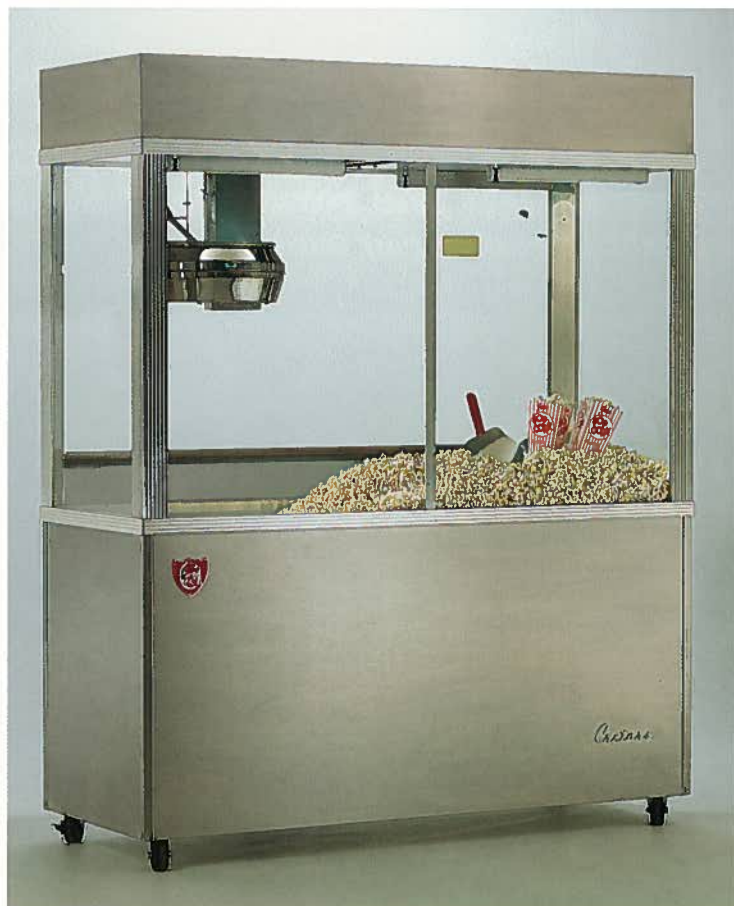
- Available in 20 oz. and 32 oz. sizes.
- Customer controlled augers dispense popcorn.
- Integrated butter topper.
- Two customers can serve themselves at the same time.
- Reduces labor costs.
- Available with choice of back-lit fluorescent or neon sign.
- Logic option available.



**CRETORS**

*Locate your nearest dealer at [www.Cretors.com](http://www.Cretors.com)*





## 4', 5' and 6' Diplomats

5' shown. (left)

- Available with single 20 oz., 32 oz. and 48 oz. kettles.
- Corn drawer holds 50 lbs. of corn.
- 100 lb. corn bin available.
- Logic option available.
- Customer or operator merchandising.
- Recessed bin provides deep corn storage.
- Available with choice of back-lit fluorescent or neon sign.

## 6' Diplomat

Shown at right with Roc N' Roll warmer.

- Available with twin 20 oz., 32 oz., or 48 oz. kettles.
- Extra length provides increased corn storage.
- Logic option available.
- Customer or operator merchandising available.

## Pop and Roc N' Roll Option

Holds twin 20 oz., 32 oz., or 48 oz. kettles.

- The popper is designed to pop and dump popcorn directly into a stainless steel warmer that holds 15 lbs. of popped corn.
- Removable warmer unplugs from cabinet and docks into concession area for continuous warming.
- Product is not handled during transport. Less breakage means more profits.
- No need to use bags or boxes to transport popcorn from machine to warmer.
- Logic option available.
- Available with choice of back-lit fluorescent or neon sign.

See page 13 for more warmer information.





# large Concession Equipment

12 to 48 oz. Ideal for: Theatres, Shopping Malls, Universities, Park Districts, Supermarkets, Stadiums & Arenas

## Pedestal Poppers

Kettle installs on bottom of cabinet or onto table

**Clean Operation,  
Reliable, Profitable!**

In production, service and durability, nothing outperforms Cretors Giant Kettles.

**Every Cretors' large pedestal popper includes these key elements:**

- Nickel plated all-steel kettle design resists corrosion and is easy to clean.
- Low maintenance design includes single high limit thermostat that provides excellent temperature control.
- Stainless steel welded pedestal cabinet.
- Twin kettle installations provides high volume operation.
- Install kettles on either one of two popper tables or in one of four popper cabinets.

**Cretors exclusive one-piece kettle design also features:**

- Direct inject oil feed, virtually eliminates oil tube misalignment leading to messy oil spills.
- Kettle comes apart easily with tab and pin design, no tools are necessary.
- Improved pan center prevents oil leakage into motor.



**Electric Giant** (above)

Available in 20 oz., 32 oz., and 48 oz. sizes.

**Gas Giant** (below)

Available in 12 oz. and 32 oz. sizes.

- 12 oz. ideal for portable use.
- Available in natural or bottled gas.
- 12 oz. portable popper requires 12V battery for agitator and propane tank or 12V battery and gas line.
- 32 oz. popper requires gas line and electrical hook up.



### Logic II Option Exclusive Cretors' Patent

Step up to the 21st Century with Cretors Microprocessor Control System. This breakthrough in modern popping technology not only simplifies machine operation with a one-touch multi-function control panel, it automates and speeds up popper operation.

- Multilingual LCD readout.
- Real time operational feed back.
- On-board diagnostic servicing program.
- Data logging features.
- Simplified switchover from salted to sugar corn production.
- Automatic kettle shut off.
- Cleaning cycle.





# Cabinet Options

No one can resist the sight and aroma of freshly popped corn!  
For dramatic up-front production, choose from these cabinet options.



**5' Open Top President**



**4' & 5' Enclosed President**



**6' Twin Enclosed President**

# Table Options

For easy back-room production, choose from these table options.  
Combine with Cretors Caramelizer to create a caramelizer plant.  
Tables are made of welded stainless steel that will not rust.



**3.5' Table**



**6' Table**



**6' Twin Table**

*See page 20 for more Caramelizer information.*



**CRETORS®**

**Locate your nearest dealer at [www.Cretors.com](http://www.Cretors.com)**

**Custom cabinets are available.  
Contact your Cretors representative  
for more information.**

# warming Cabinets

*Ideal for: Concession areas that require added storage and warming capabilities.*

**A** popcorn production system is not complete without a Cretors Warming Cabinet.

**Every Cretors Warming Cabinet includes these key elements.**

- Lighted sign.
- Controlled by two thermostats.
- Exclusive recirculating hot air conditioner system reduces energy consumption and maintains product temperature.

## **Diplomat Showcase Warmer** (right)

- Adjustable wire shelves accommodate any style and size of packaging.
- Sliding acrylic doors on one or two sides provide easy access into warmer while creating a self-service or optional pass-through warmer.
- Wing style doors available



## **Modular Showcase Warmer** (left)

The modular Showcase Warmer takes merchandising to a new level! The halogen lights located under the back-lit popcorn sign provide exceptional internal lighting. For use on countertops or combined with the removable Roc N' Roll warmer. Available in 30" and 36" widths.

- External halogen lights illuminate product through-out entire cabinet.
- Modular signs can be positioned on customer, and or operator sides for optimal merchandising.
- Adjustable wire shelves adjust to accommodate various packaging style and sizes.
- Optional tray stops permit inclined shelves for self-service applications.
- Doors are available as sliding or self closing wing doors.



**CRETORS®**

**Locate your nearest dealer at [www.Cretors.com](http://www.Cretors.com)**



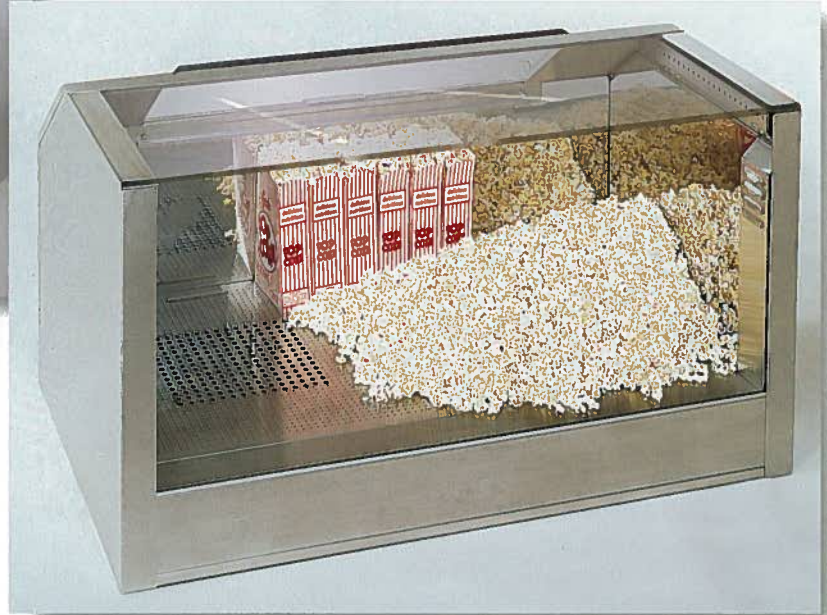


36" Counter Showcase Warmer

## Counter Showcase Warmer (left)

Ideal for creating a customized concession stand.

- Illuminated by internal halogen lights.
- Easy add-in counter design.
- Available in 36" and 48" widths.
- Removeable heating unit permits service without removing the warmer.
- Designed for front or back concessions.
- Superior heat and recirculating system.
- Available with upper merchandising rack.
- Available with mirrors to increase merchandising.



48" Counter Showcase Warmer

## Roc N' Roll Warmer (right)

The Pop and Roc N' Roll unit is the innovative combination of a stationary popping unit with the Roll-Out-Cornditioner. When the Roc N' Roll bin docks in the Pop N' Roll Popper, corn pops directly into the bin during production.

- Pops popcorn directly into the stainless steel Roc N' Roll warmer and is wheeled to serving site.
- Warmer holds up to 15 lbs. of popped corn.
- Automatically unplugs from popper and can be plugged directly into the concession stand for continuous warming with power docking system.
- Angled cabinet design on operator side makes serving product easy.
- Optional internal halogen lights and glass front highlight fresh product.
- Sliding protective lid provides easy access.
- Product is not handled during transport. Less breakage means more profits.
- No need to use garbage bags or boxes to transport popcorn from machine to warmer.
- Ideal for remote merchandising.



See page 9 for more popper information.



## Power Docking System

**Exclusive Cretors' Patent**

Warmer unplugs from popper and automatically plugs into concession stand when pushed into place.



# warming Cabinets

*Ideal for: Concession areas that require added storage and warming capabilities.*



## Tray Warmer

- Reversible lighted sign provides customer or operator merchandising as desired.
- Three adjustable wire racks provide flexibility within warmer to accommodate different packaging sizes.
- An excellent merchandiser, this Tray Warmer can store and heat up to 20 standard nacho trays.

## Sign Options



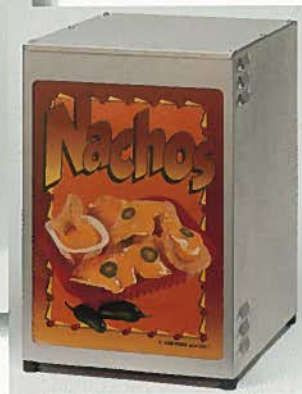
Other sign options available upon request.



Front view

## Portion Pak Warmer (left)

- Holds up to eighty 3½ oz. cups of hot zesty cheese.



## Bulk Warmer

- Reversible lighted sign provides front or rear merchandising as desired.
- Two drop shelves: top provides easy product loading, bottom used for serving product.
- Unique top load design provides automatic product rotation.
- Clean out drawer removes crumbs from bottom of cabinet.



# topping & Dispensing Systems

*Ideal for: Movie theatres, Concession stands,  
Self serve application, Restaurants.*

**A**ll Cretors topping and dispensing systems are built to consistently heat topping and oil.



## Bag-In-Box (BIB) Topper Dispensing System

### Exclusive Cretors' Patent

- Heated Shelf Deck warms two 35 lb. boxes of topping for immediate switch over from first bag to second.
- Cabinet Base with doors sold separately.

## Automatic Oil Pump

- Automatic Portion Control Pump heats, measures, and delivers oil to kettle.
- Rugged Cast Aluminum Heating Element.
- 30 minute heat timer.
- Electronic timer provides accurate portion control.

For use with 50 lb. pail of oil.



## Countertop Topping Dispensing System

- Ideally suited for operator or self-serve applications.
- Designed to hold one 2.5 gallon bag.
- Optional 2.0 gallon liner for pour-in application.
- Operator side sign available on self-serve machines.



## The Original Automatic Bag-In-Box (BIB) Oil Pump

### Exclusive Cretors' Patent

- Cretors patented heated shelf deck holds and warms two 35 lb. boxes of popping oil for immediate switch over from first bag to second.
- Eliminates messy oil pail changes, accidental spills and wasted oil.
- Electronic timer provides accurate portion control.
- Optional heated oil line available.



## BIB Backroom Warmer

Stores and warms oil and topping for quick change over without service interruption or downtime.

- Heated shelf decks melts and maintains product for immediate use.
- Holds four boxes of oil or topping.
- Completes the BIB system.

## Hot Rod

The fastest, most economical way to heat and melt solidified coconut oil in a pail.



# cotton Candy Equipment

*Ideal for Carnivals, Amusement parks, Rentals, Schools,  
Fund raising events*

**C**retors Cotton Candy equipment is versatile enough to meet all cotton candy needs.

## Every Cretors Cotton Candy Machine includes these key elements:

- Durable Incoloy heating element.
- Welded stainless steel cabinet.
- Two cabinet handles make carrying easy.
- Uses standard cotton candy mix or regular granulated sugar.
- Energy efficient.

## Ringmaster

With Heavy-Duty Base.

- High volume production.
- Compression spring motor support cannot be stretched out of shape.
- Floss heads available in 5" and 7" sizes.
- 5" floss head is ideal for smaller applications.
- 7" floss head is ideal for high-production output and holds 50% more sugar than 5" floss head.



Heavy duty base with optional bowl.



## No Ribbons or Bands!

The Ringmaster is the only commercial cotton candy machine that does not use ribbons and bands.

- The Cretors stainless steel spinner head comes with a mesh screen containing a custom fitted Incoloy heat element.
- The Incoloy heat element eliminates the need to replace ribbons and bands and doesn't require the service needed by ribbons and bands.
- Motor has shielded ball bearings that protect it from the sugar.
- Easy to clean, cotton candy sugar mixes and regular table sugar burns off.







## Ringmaster Wagon

Built exclusively for the Ringmaster Cotton Candy Machine, this two-wheel cotton candy wagon will take you to where the profits are.

- Wagon base provides storage space for supplies.
- Also available as a knock-down cart. (below)
- Serving shelf holds 6 cones.

See page 5 for more information on knock down carts.



**CRETORS.**

Locate your nearest dealer at [www.Cretors.com](http://www.Cretors.com)



## Ringmaster Lite

With Light Duty Base. Lightweight, compact cabinet. Ideal for rentals and other light duty applications.

- Low volume production.
- Available with 5" floss head only.
- Plugs into standard outlet.



## Stationary Cotton Candy Production

- Eye catching merchandising for stationary production.
- Convenient storage space available for supplies.
- Internal light illuminates cabinet.
- Lighted sign.
- Durable, welded steel powder coated frame.
- Exhaust fan.
- Optional bag blower available.

# krispy kist Equipment

*Ideal for: Retail shops or any low-volume concession site.*

**K**rispy Kist Equipment has been around for over 70 years. Add this to Cretors history, and you have over 180 years of snackfood production experience. Cretors now offers Krispy Kist equipment as part of its regular product line.

## Candy Corn Cooker

The Candy Corn Cooker is an integrated stove and kettle designed for production of candy coated product.

- Easy operation.
- Stainless steel cabinet.
- All copper kettle.
- Safety pilot shut-off valve.
- Comes with wooden mixing paddle.



## 685 Hot Air Popper

The Hot Air Popper is designed to produce hot air popped corn in a retail shop or concession setting. The 685 popper has production capacity of 40-50 pounds of raw popcorn per hour.

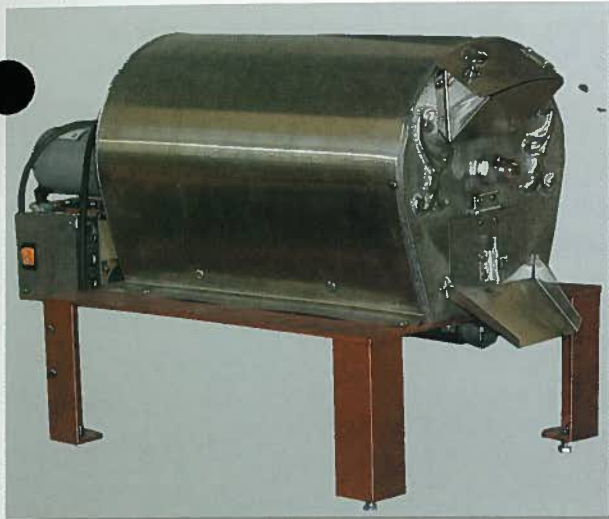
- Stainless steel cabinet.
- Includes built in sifting basket.
- Solenoid valve controls main burner flame.
- Safety pilot valve controls pilot flame.
- Available in both gas and electric models.
- Available in natural or propane gas.
- Electric model UL approved.
- Quiet operation.



**CRETORS.**

*Locate your nearest dealer at [www.Cretors.com](http://www.Cretors.com)*





### **Krispy Kritter Counter Roaster (left)**

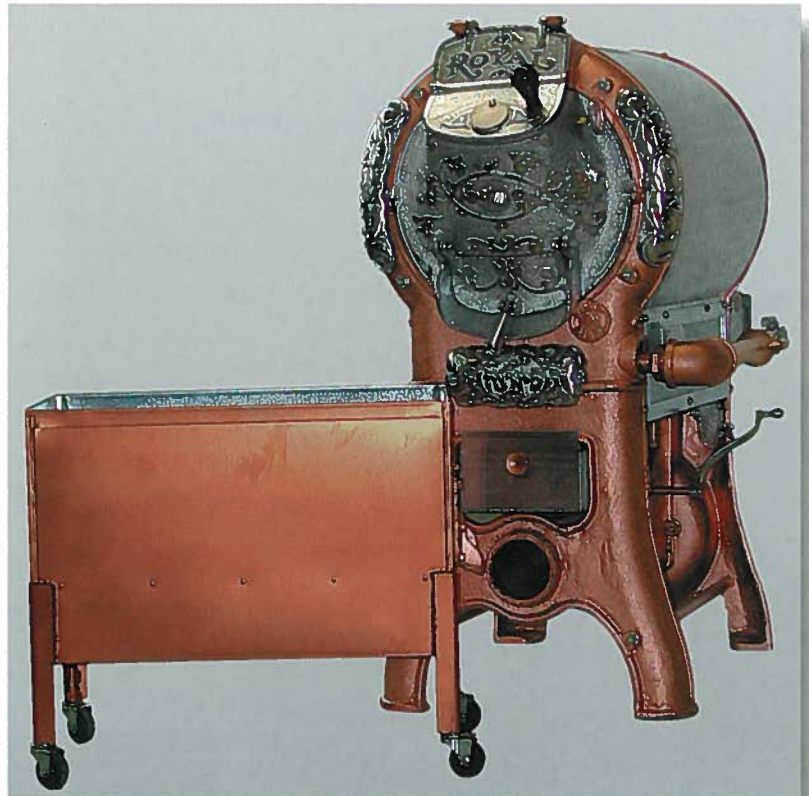
The Krispy Kist Kritter Counter Roaster roasts a variety of nuts, and has a production capacity of 40 to 50 pounds shelled or 20 pounds in-shell peanuts per hour.

- Safety pilot shut off valve ensures automatic gas shut-off.
- Specify natural or propane gas.
- Available in 120 V and 240 V electric model.

### **No. 5 Royal Roaster (right)**

The No. 5 Royal Roaster roasts a variety of nuts, seeds, and beans and has roasting capacity of 100 pounds shelled or 50 pounds in-shell peanuts per hour.

- Attractive antique replica in copper and chrome.
- Cooling cart with removable basket circulates air to cool roasted product and prevent over cooking. Allows for easy transportation of cooled product.
- Safety pilot valve controls pilot flame.
- Specify with natural or propane gas.



### **Brick Lined Candy Stove (left)**

Our Brick Lined Candy Stove is simple candy production at it's best!

This special cast iron stove and copper kettle design is reminiscent of an era gone by when all candy was hand made. It is ideal for making caramel corn, taffy apples, praline nuts, fudge & peanut brittle. The Brick Lined Candy Stove is perfect for creating a true Kettle Korn atmosphere!

- Solid Copper Kettle is available in two sizes to fit a variety of needs.
- Cast Iron Brick Lined Candy Stove with removable legs.
- Stove is available with natural or propane gas.
- Safety gas pilot valve regulates pilot flame.
- Available in 20" and 24" kettle sizes.

# caramel Corn Equipment

*Ideal for: Retail shops, speciality popcorn concessions.*

**D**iversify your concession business to include caramel corn! Our Caramelizer is a combination cooker and mixer that allows one to easily cook and mix a variety of savory and caramel flavors. Simply add the caramel or savory coating first, cook to desired consistency and immediately add popcorn to be coated. No more fussing with the kettle angle to get perfect coverage.

## All Cretors caramel corn equipment includes these key elements:

- Stainless steel mixing bowl, agitator blade, and pedestal make it durable and easy to clean.
- Adjustable digital temperature control provides the versatility to produce low temperature savory coatings and high temperature candy coatings.
- Audible alarm indicates when temperature is reached.
- All-in-one design melts, cooks and mixes product.
- Can be purchased as a component or combined with a Cretors Pedestal popper and frame with stainless steel receiving tray or table to create a small popping plant.



## Cretors 100 lb. Cooker and Coater (CMD100)

Requires a Cretors custom table.

- Produces 100 lbs. of candy coated corn per hour.
- Mount on Cretors custom-built table designed for higher volume applications.
- Custom cooling table available.



## Cretors 25 lb. Cooker and Coater (CMD25)

- Produces 25lbs. of candy coated corn per hour.
- Can be mounted on existing Cretors popping frame or table.



Digital control panel.



**CRETORS**

**Locate your nearest dealer at [www.Cretors.com](http://www.Cretors.com)**



**C. Cretors & Company** manufacturers and provides high quality equipment. We are aggressive in researching, developing and improving equipment design while striving for product excellence.

Long considered the cornerstone in the industry, we ensure every Cretors product is tested in-house before shipment; allowing us to maintain our leading edge in the business. With worldwide distribution, Cretors' products are designed and constructed to meet various agency approvals. We welcome the opportunity to design a custom machine for you.

---



#### **UL Listed and Recognized**

- UL approved equipment is tested by Underwriters Laboratories for compliance with the appropriate safety standards for risk of fire, electric shock and related hazards.



#### **ULS Sanitation**

- This classification marking is used for products intended for the Canadian marketplace.
- It indicates that UL has used Canadian standards to evaluate the product for compliance with the appropriate safety standards for the risk of fire, electric shock and related hazards.



#### **NSF**

- NSF marked equipment meets or exceeds the requirements for materials, design, construction and performance necessary for easy cleanability, and food protection.



#### **C-UL Canada**

- This Classification marking is used for products intended for the Canadian marketplace.
- It indicates that UL has used Canadian standards to evaluate the product for specific hazards or properties.



#### **TUV/GS**

- This agency approval is the official statement of product conformity accompanied by appropriate documentation as specified by European Union regulations or customer requirements;
- It proves that products meet all requirements of relevant European Union Directives.
- Emphasis on special product properties such as safety, quality, durability, environmental compatibility, and conformity to standards;



#### **CE Mark**

- This official marking is required by the European Community for all electric and electronic equipment that will be sold or put into service anywhere in the European community.
- The mark proves that a particular product fulfills and complies with all essential safety and environmental requirements.



EST'D. 1885

**CRETORS®**  
FOODSERVICE EQUIPMENT DIVISION



EST'D. 1885

**CRETORS®**  
FOOD PROCESSING SYSTEMS DIVISION



EST'D. 1885

**CRETORS®**  
KRISPY KIST PRODUCTS DIVISION

**C. Cretors & Company**  
3243 N. California Ave., Chicago, IL 60618  
(773) 588-1690 (800) 228-1885 Fax: (773) 588-7141  
Web Site: [www.Cretors.com](http://www.Cretors.com)