



We invented the popcorn machine
THEN JUST KEPT GOING!

176 MITTEL DRIVE, WOOD DALE, IL 60191

Pretzel Display Case Manual Model 1100

**120 Volt
Single Phase, 60 Cycle**

**100/120 Volt
Single Phase, 50/60 Cycle**



**READ and UNDERSTAND these operating and safety
instructions before operating this machine!**

TABLE OF CONTENTS

I. SAFETY ALERT SYMBOL.....	3
II. SAFETY FIRST	3
III. INTRODUCTION	3
IV. PURPOSE OF MANUAL	4
V. INSTALLATION INSTRUCTIONS.....	4
VI. OPERATING INSTRUCTIONS	4
VII. SANITATION INSTRUCTIONS	5
VIII. MAINTENANCE INSTRUCTIONS	6
IX. TROUBLESHOOTING.....	6
X. EXPLODED PARTS DIAGRAM	7
XI. REPLACEMENT PARTS LIST	8
XII. WIRING DIAGRAM	9

I. SAFETY ALERT SYMBOL



II. SAFETY FIRST



The information in this manual is essential for the safe installation and operation of your Cretors machine. The manual must be read and understood before installing, and operating the equipment, or equivalent training must be provided.



“The employer shall instruct each employee in the recognition and avoidance of unsafe conditions, as well as, the regulations applicable to his work environment and to control or eliminate any hazards or other exposure to illness or injury”. Ref.: 29 CFR 1926.20 (b)(4)(a)(2)



It is understood that safety rules within individual companies vary. If a conflict exists between the safety procedures contained in this manual and the rules of a using company, the more stringent rule should take precedence.

III. INTRODUCTION

This manual is filled with time-saving and money-saving information regarding your Cretors machine. There is nothing more important than the safety aids and warnings that are throughout this document. The Safety Alert Symbol is used to identify topics of primary safety concern wherever they appear. Furthermore, a separate section has been included which deals exclusively with service and accident prevention.

If, after reviewing this manual, anything is unclear or technical problems are encountered, contact the distributor from whom you purchased your machine for assistance. If there are any additional questions, feel free to contact our Customer Service Department at the address and/or phone number listed on the last page of this manual. Always have the model and serial number of your machine available to assist in obtaining the correct information.

IV. PURPOSE OF MANUAL

This instruction manual is intended to familiarize owners with the operation and safety procedures associated with your Cretors machine.

It is important that this manual be kept available to operating personnel.



A PERSON WHO HAS NOT READ AND UNDERSTOOD ALL OPERATING AND SAFETY INSTRUCTIONS IS NOT QUALIFIED TO OPERATE THE MACHINE.

V. INSTALLATION INSTRUCTIONS

A. Location

Choose a location for your case to maximize the ease of operation and maintenance procedures. Check your local building and fire codes for location restrictions.

While unpacking the display case, carefully inspect it for missing parts or damage during shipment.

B. Power Supply

Plug unit into a grounded outlet and turn on power switches (Items 18 and 19). This will turn the lights on, rotate the rack and start heating the cabinet. The display case requires a 120-volt power supply. Use a GROUND 120-VOLT CIRCUIT WITH A 15-AMP BREAKER or FUSE. Do not use an extension cord.



THIS UNIT IS NOT FUSED. BE SURE TO CONNECT IT TO A GROUND 120-VOLT CIRCUIT WITH A 15-AMP BREAKER OR FUSE

VI. OPERATING INSTRUCTIONS

Operating the Display Case

- 1 Turn off main power switch (Item 18) to stop rack rotation while loading and unloading pretzels.
- 2 Load the display case with up to five pretzels per rack arm (Item 14) for a total of 60 pretzels. **DO NOT OVER FILL.**
- 3 Turn on both switches to display pretzels and maintain lighting inside the case.



PRETZELS MUST BE COOKED AS RECOMMENDED BY THE MANUFACTURER PRIOR TO DISPLAY.

VII. SANITATION INSTRUCTIONS

A clean, attractive display case is safer. Be sure to use cleaning materials that are non-corrosive, non-abrasive, and food safe. Clean and sanitize with materials appropriate for stainless steel and aluminum.



NEVER IMMERSE THE UNIT IN WATER. THIS APPLIANCE SHOULD NOT BE CLEANED WITH A WATER JET.



BE CERTAIN THE MACHINE IS TURNED OFF AND POWER IS UNPLUGGED BEFORE SANITIZING THIS MACHINE. FAILURE TO DO SO COULD RESULT IN INJURY.

Do not clean appliances until they have been given sufficient time to cool. Failure to do so may result in serious burns.

Unplug the unit and allow the unit time to cool. Remove all excess pretzels remaining on the rack arms (Item 14).

To remove rack assembly, loosen the thumb screw located near the top that holds the rack onto the gear motor shaft (Item 12).



NOTE: Be sure the thumb screw lines up with the hole on the shaft during reattachment this ensure that the rack will not fall off if the thumb screw loosens during use.

Reminder: Always completely reassemble the display case before operating.

VIII. MAINTENANCE INSTRUCTIONS



ONLY QUALIFIED PERSONNEL SHOULD PERFORM DIAGNOSTIC CHECKS, AND, IF NECESSARY, CORRESPONDING ADJUSTMENTS AND REPAIRS. MAINTENANCE OF THIS DEVICE MAY PRESENT AN ELECTRICAL SHOCK HAZARD AND CAN CAUSE SERIOUS INJURY OR DEATH.



PERFORM WORK ONLY ON DE-ENERGIZED CIRCUITS. FAILURE TO DO SO MAY LEAD TO ELECTRICAL SHOCK, RESULTING IN PERSONAL INJURY OR DEATH.

To access all electrical components, unplug power cord (Item 20) from outlet then lay unit on its side to remove the four screws from the base cover (Item 1) exposing heating element, switches and wiring. Use the wiring instructions on to aid in troubleshooting.



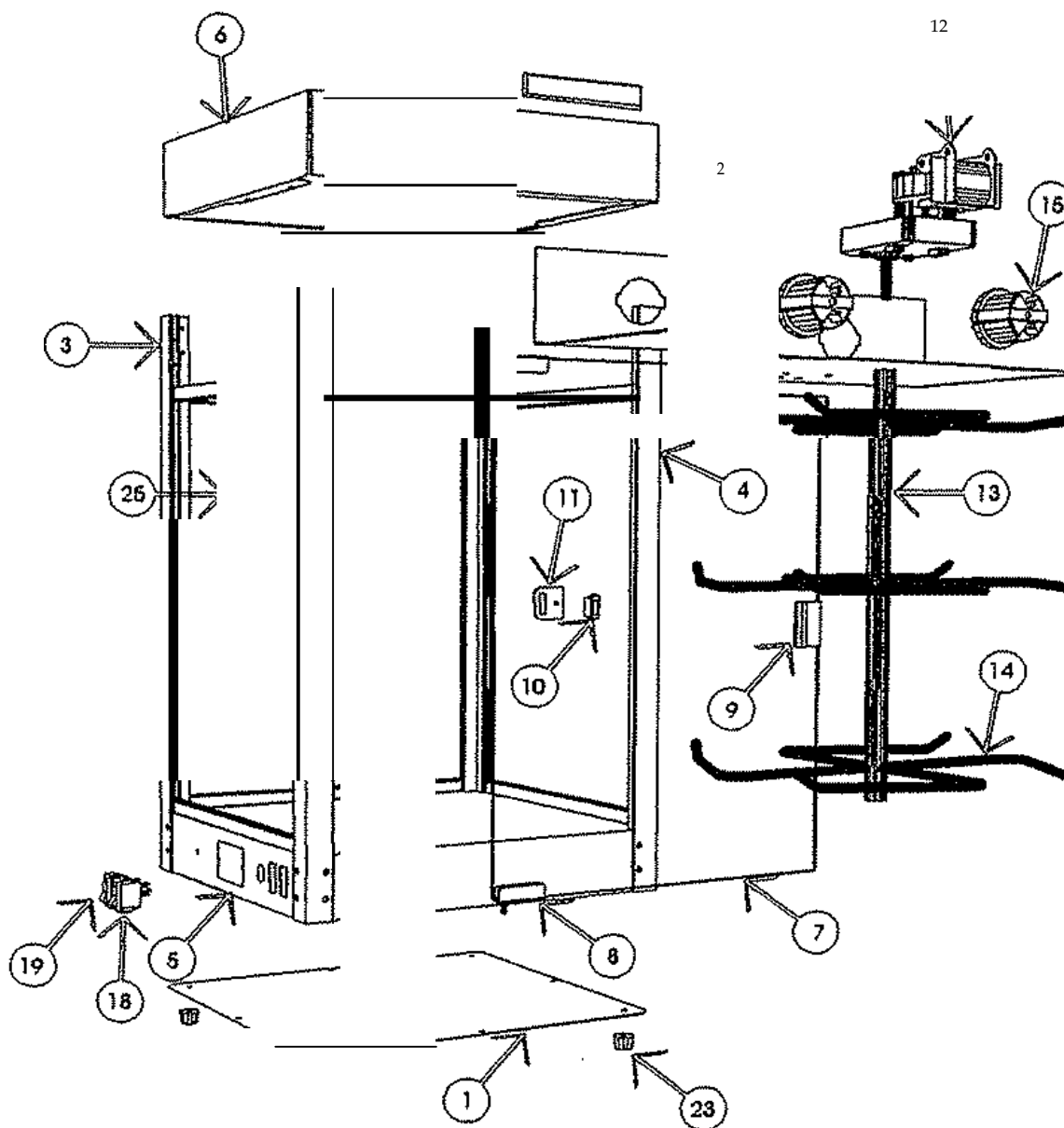
THIS UNIT IS NOT FUSED. Be sure to connect it to a grounded 120-volt CIRCUIT WITH A 15-AMP BREAKER OR FUSE.

Periodically check all electrical switches and cords for signs of wear. Check all screws and rivets for tightness.

IX. TROUBLESHOOTING

PROBLEM	POSSIBLE CAUSE	ACTION
Will not heat.	Loose connection to the heater.	Remove bottom cover and check for loose connection. If no loose connections, check for continuity in element. If no continuity, replace element.
Light will not work.	Bulb burned out.	Plug in machine and/ or turn on switch. Turn off machine and/ or turn off switch. Replace bulb with recommended replacement bulb.

X. EXPLODED PARTS DIAGRAM



XI. REPLACEMENT PARTS LIST

ITEM	PART NO.	DIAGRAM	DESCRIPTION	QUANTITY
1	1800		BASE COVER	1
2	1900		MOTOR DECK	1
3	1802		EXTRUSION • REAR	3
4	1901		EXTRUSION • CATCH	1
5	1902		BASE	1
6	1903		TOP CAP	1
7	1904		PLEXIGLAS DOOR	1
8	4866		DOOR HINGE (SET)	1
9	1905		STRIKE PLATE	1
10	1820		MAGNETIC CATCH	1
11	1906		MAGNET BRACKET	1
12	1907		PRETZEL RACK GEARMOTOR	1
13	1908		PRETZEL RACK SHAFT	1
14	1909		PRETZEL RACK ARM	12
15	4864		HEAT LAMP SOCKET	2
16	2053	/D)	40 WATT BULB)	2
17	1823	/D)	FLEXIBLE HEATER WIRE ASS'Y	1
18	7250		MAIN POWER SWITCH	1
19	4855		KETTLE/HEAT LAMP SWITCH	1
20	1597	/D)	POWER CORD 16/3 SJT	1
21	2350	/D)	SIII.AJN RELIEF 6P34	1
22	832TINN	(N/S)	#8-32 TINNERMAN TYPE J NUT	10
23	4867		RUBBER FEET	4
25	1811		GLASS	3

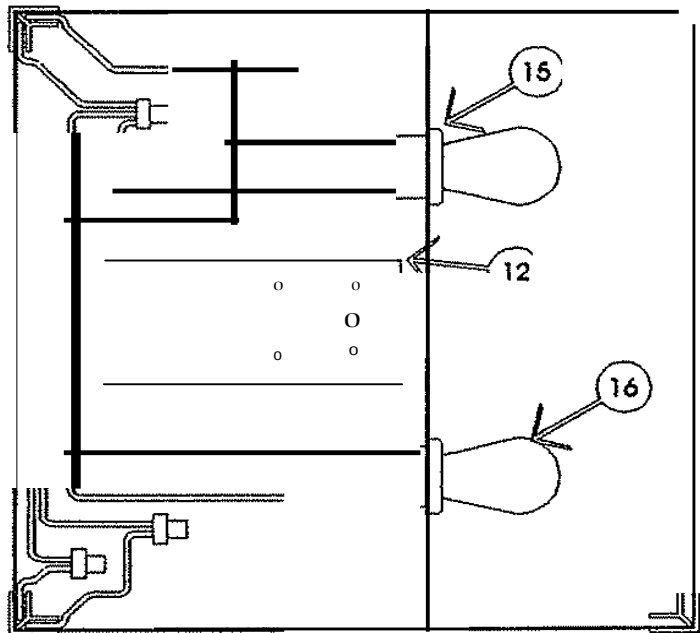
(D) Denotes that part is shown on WIRING DIAGRAM on PAGE 9.

(N/S) Denotes that part is not shown on Illustrations.

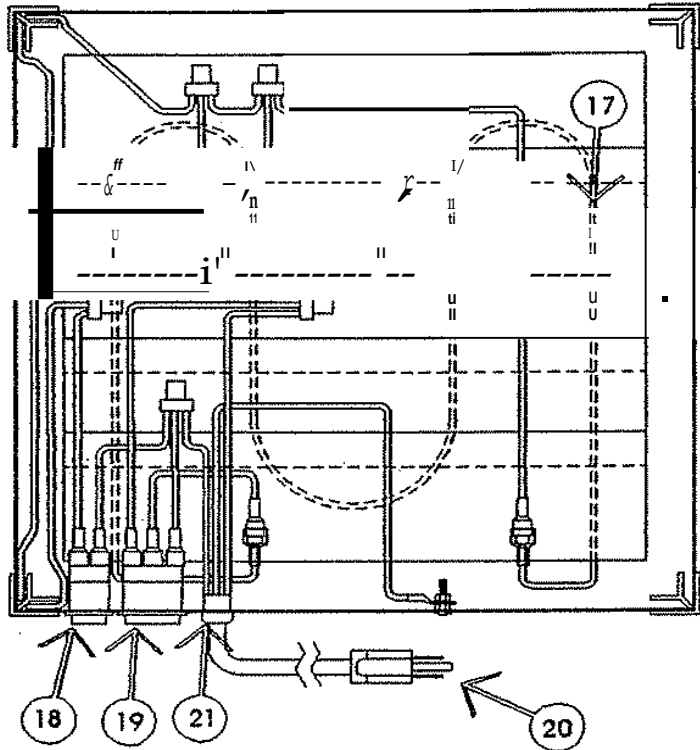
XII. WIRING DIAGRAM

Referenced to
REPLACEMENT PARTS LIST on PREVIOUS
PAGE.

THIS VIEW FROM UNDERNEATH TOP CAP



THIS VIEW FROM UNDERNEATH BASE
WITH BASE COVER (ITEM 1) REMOVED.



This manual is filled with time-saving and money-saving information regarding your Cretors oil pump. There is nothing, however, more important than the safety aids and warnings found throughout this document.

If you have any questions regarding the operation or cleaning of your Cretors machine, contact your local distributor. Should you have any difficulties or are unable to reach them, feel free to contact the Customer Service Department at C. Cretors and Company.

Additional copies of this manual can be obtained from C. Cretors and Company at the address listed below. Please provide the model and serial number when requesting additional copies of this manual. There will be a nominal charge for additional copies.

Cretors guarantees this machine to be free of defects in parts, materials and workmanship for two years. Please take this time to fill out the factory registration card and return it to the factory to activate your warranty. If you have any questions concerning the Cretors' warranty, please contact your local distributor or the Customer Service Department at C. Cretors and Company.



C. CRETORS AND COMPANY

176 MITTEL DRIVE

WOOD DALE, IL 60191

PHONE (847) 616-6900, (800) 228-1885, FAX (847) 616-6970

WEB SITE: <http://www.cretors.com> Email: postmaster@cretors.com

